

# An Overview of Milwaukee County's Senior Center and Wil-O-Ways Facilities

Department of Administrative Services  
Department of Health and Human Services



# Agenda

## Overview of the 5 County Owned Senior Center and 2 Wil-O-Ways Facilities

- Facilities Conditions & Needs
- Programming & Operations

Conclusions

Questions



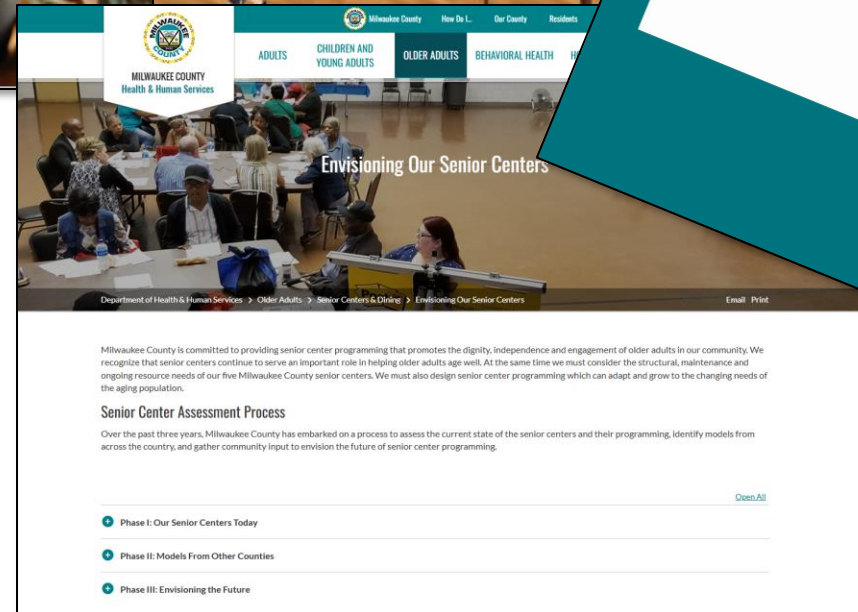
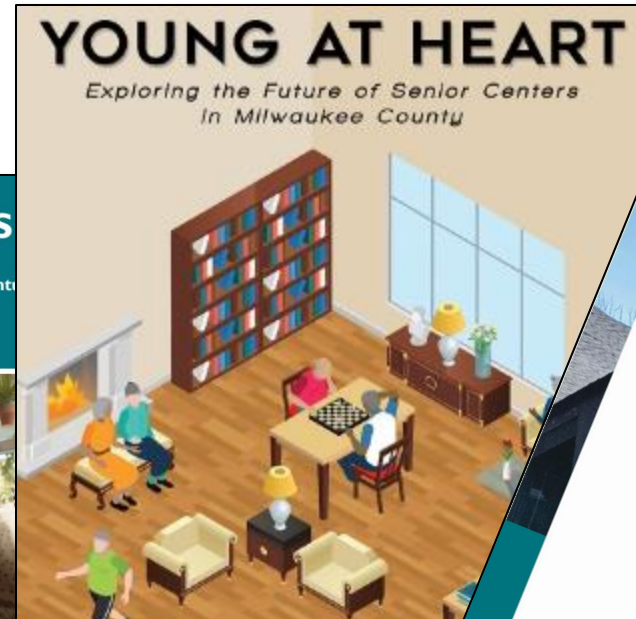
# Background

## Board Files:

- 25-593
- 25-414
- 24-730
- 19-448
- 14-47

## Commission on Aging:

- 24-166
- 23-66
- 21-141
- 19-193
- 18-144



# Facility Conditions & Needs



# Facility Characteristics

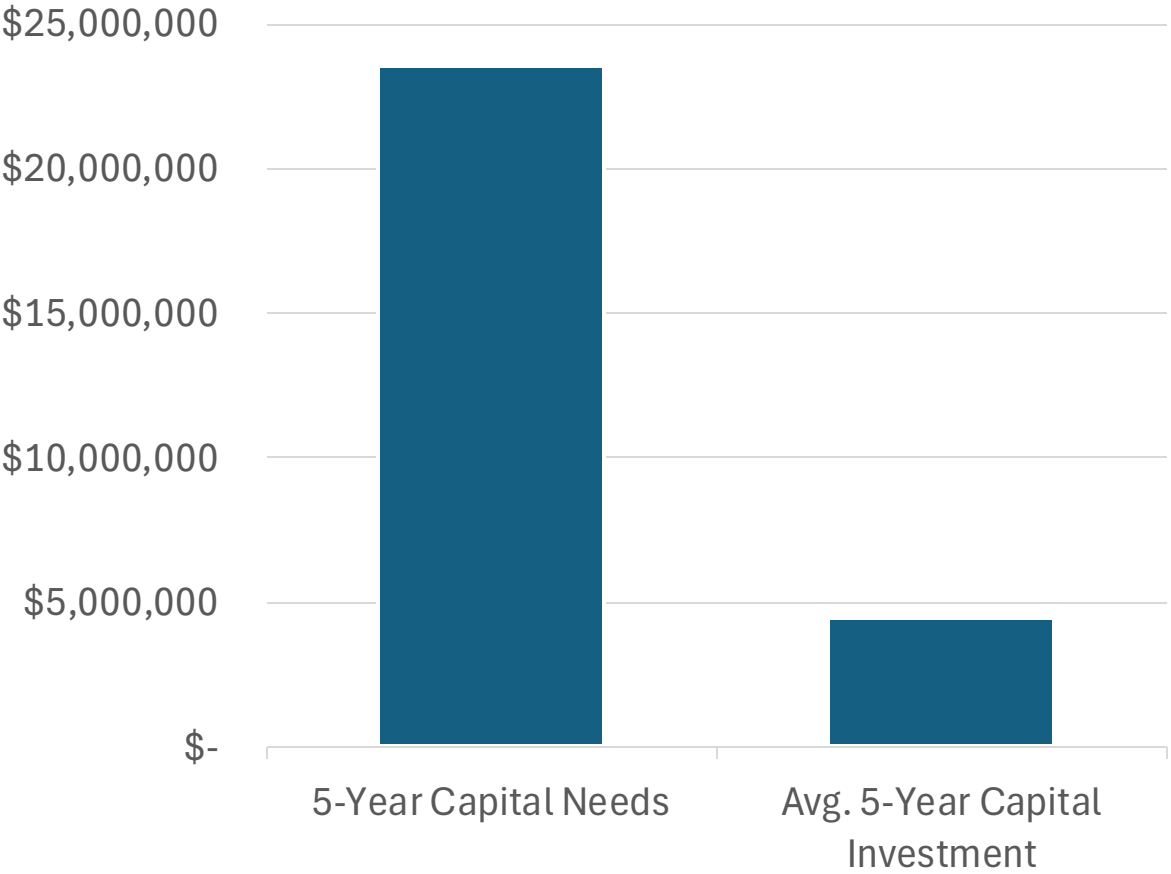
Facility	Size (Square Feet)	Year Constructed
Clinton Rose Senior Center	35,706	1982
Kelly Senior Center + Kelly Nutrition Building	17,010	1956
McGovern Park Senior Center	12,983	1974
Washington Park Senior Center	36,820	1967
Wilson Park Senior Center	35,540	1980
Wil-O-Way Grant	11,400	1979
Wil-O-Way Underwood	10,350	1964



# Capital and Operational Spend & Needs

Facility	Capital Investments 2014-2025	Avg Capital Investment / Year	Avg Operating Spend / Year	5-Year Capital Needs *
Clinton Rose Senior Center^	\$5,116,537	\$465,140	\$156,607	\$2,938,058
Kelly Senior Center	\$609,967	\$55,452	\$60,993	\$3,022,158
McGovern Senior Center	\$643,158	\$58,469	\$86,373	\$3,123,878
Washington Senior Center	\$1,525,526	\$138,684	\$138,386	\$5,246,158
Wilson Senior Center	\$1,099,819	\$99,984	\$237,464#	\$4,738,508
Wil-O-Way Grant	\$355,195	\$32,290	\$43,934	\$1,552,500
Wil-O-Way Underwood	\$386,793	\$35,163	\$68,748	\$2,931,500
<b>TOTALS</b>	<b>\$9,736,995</b>	<b>\$885,181</b>	<b>\$792,506</b>	<b>\$23,552,761</b>
^ Includes one time \$4 Million Flexible Facilities grant in capital spend.				
*Excluding splash pads and playgrounds.				
# Wilson numbers increased by operational spend on emergency HVAC repairs in 2025				

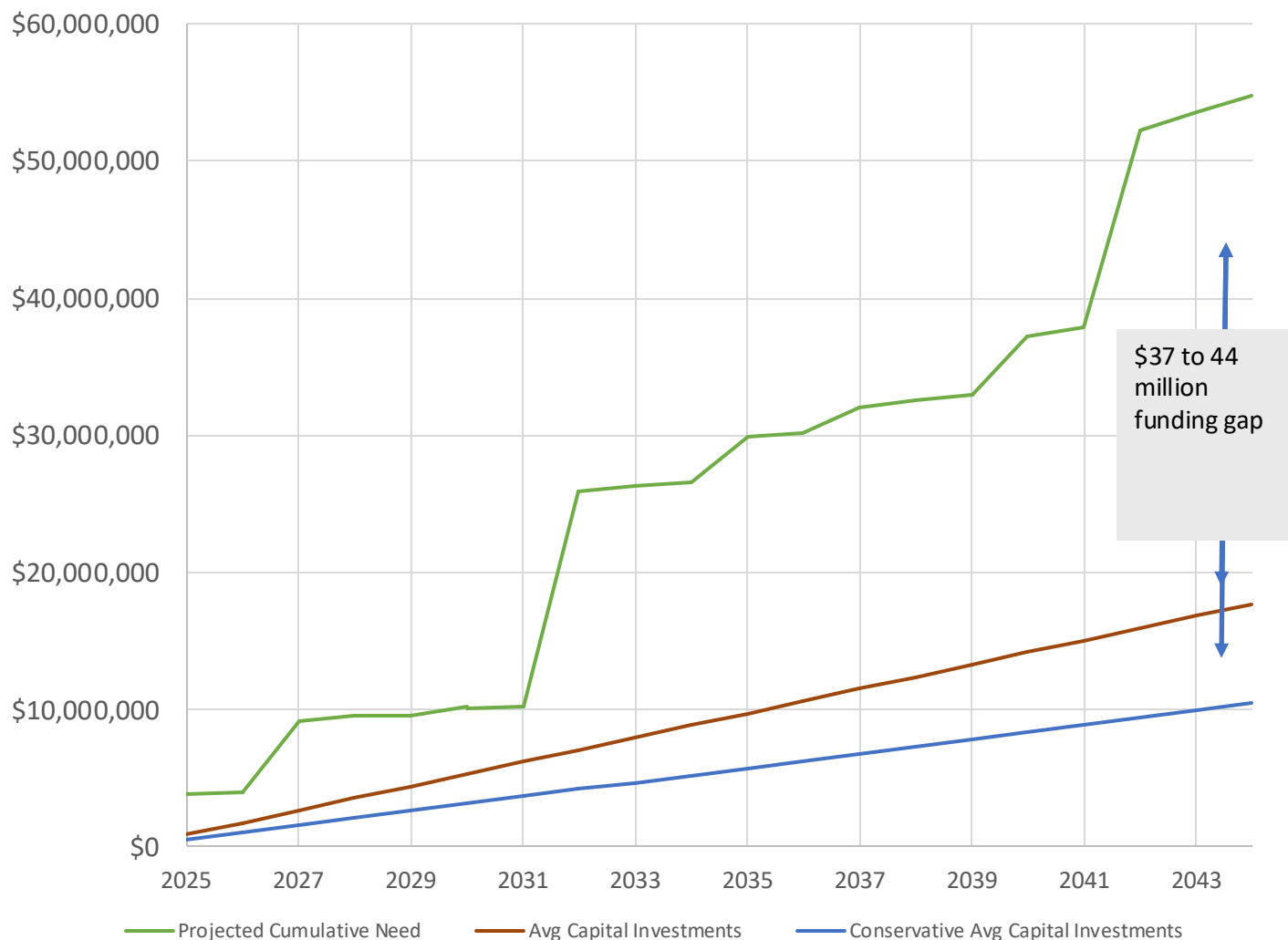
# 5-Year Needs v. Avg Spend



**Wilson Senior Center:** Malfunctioning Security Louvers



# Long Term Projected Need & Avg Capital Investment



**Wil-O-Way Grant:** Rooftop HVAC end-of-life condition





# Facility Conditions Sampling

WIL-O-WAY UNDERWOOD RECREATION



ROOFING AT END OF LIFE CONDITION



MISSING & INEFFECTIVE GUTTERS LEAD TO ICE DAMING, ROOF DAMAGE, & SLIPPERY WALKWAYS



FURNACE - END OF USEFUL LIFE



WATER HEATER - END OF USEFUL LIFE



INACTIVE/OBSOLETE ALARM

# Facility Conditions Sampling

WIL-O-WAY GRANT RECREATION



DAMAGED GUTTERS



DEFECTIVE ALARM SYSTEM: TYPICAL OF  
MCGOVERN, WILSON, KELLY, & WASHINGTON PARK



SPLASHPAD FILTRATION EQUIPMENT  
DETERIORATED & NEARING END OF LIFE CYCLE



ROOFING AT END OF LIFE CONDITION



NONFUNCTIONING SECURITY SYSTEM



# Facility Conditions Sampling

WASHINGTON PARK SENIOR CENTER



INOPERABLE HVAC CONTROLS



ROTTED WINDOWS-TYPICAL ON ALL WINDOWS AT WASHINGTON PARK



INTERIOR DAMAGE DUE TO FAILED WINDOWS



DISCONNECTED GEARS TO OPERATE/OPEN LOUVERS FOR HVAC



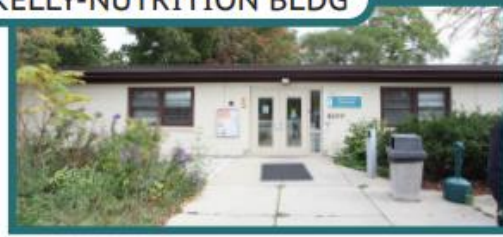
ROOFING MEMBRANE AT END OF USEFUL LIFE & FREQUENTLY LEAKS

# Facility Conditions Sampling

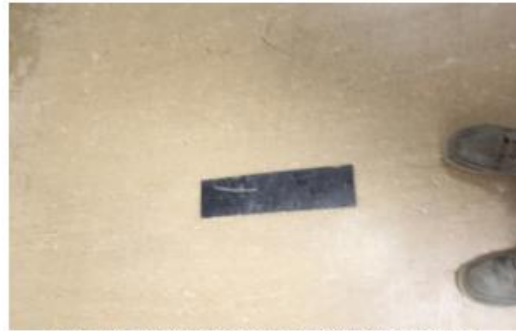
KELLY SENIOR CENTER



KELLY-NUTRITION BLDG



ELECTRICAL SYSTEMS AT END OF USEFUL LIFE



TILE FLOORING FAILING & EXPOSED MASTIC



INEFFICIENT ORIGINAL 1950'S WINDOWS



OUTDATE ELECTRICAL



OUTDATED SECURITY SYSTEM



# Facility Conditions Sampling

WILSON PARK SENIOR CENTER



DETERIORATED SIDING - MULTIPLE LOCATIONS



MISSING INSULATION AT FOUNDATION



DETERIORATED ROOFING & EAVES



WILDLIFE NESTING IN DETERIORATED SIDING



MALFUNCTIONING SECURITY LOUVERS



# Facility Conditions Sampling

MCGOVERN SENIOR CENTER



RUSTING MECHANICAL SYSTEMS-EVIDENCE OF REPEATED FLOODING IN BASEMENT



PUBLIC ACCESS COMPUTERS USED FOR HVAC CONTROLS



DAMAGED AIR EXCHANGING FAN DOESN'T WORK



OUTDATED SECURITY SYSTEM



FIRE ALARM PANEL WITH TROUBLE CODE SHOWN

# Facility Conditions Sampling

CLINTON ROSE SENIOR CENTER



OUTDATED SECURITY SYSTEM



ROOFTOP COOLING TOWERS - NEARING END OF LIFE USE



OUTDATED COMMUNICATION SYSTEM - BEING UPDATED WITH CURRENT ONGOING PROJECTS



MALFUNCTIONING SECURITY LOUVERS



OUTDATED HVAC CONTROLS - BEING UPDATED WITH CURRENT ONGOING PROJECTS

# Programming & Operations



# Milwaukee County Senior Centers

- Transferred from Parks to Department on Aging: 1995-2002
- Align Programming with Area Aging on Aging
- Contract for Programming with nonprofit providers:  
Goodwill, Interfaith, and Serving Older Adults of Southeast WI.
  - Recreation & Socialization
  - Fitness & Evidence Based Health Promotion classes
  - Arts, Crafts, Music, Dance, Spirituality, Cultural Celebrations
  - Senior Dining, Nutrition Education, Meals on Wheels
  - Education, Technology, Advocacy, Access to Benefits



# Other Activity in Senior Centers

- Senior Stockbox Distribution
- Aurora Mobile Clinic
- Hunger Task Force Mobile Market
- Public Hearings and Forums
- City of Milwaukee Polling Sites
- Emergency Heating/Cooling/Shelter
- Facility Rental in Evenings and Weekends





# Programming Revenue

- Programming primarily funded through County Tax Levy:

Year	Amount Allocated	Present Value of Allocation
<b>2005</b>	1,012,182	<b>\$1,625,757</b>
<b>2010</b>	\$1,347,601	<b>\$1,938,619</b>
<b>2015</b>	\$1,330,847	<b>\$1,761,394</b>
<b>2020</b>	\$936,867	<b>\$1,135,519</b>
<b>2025</b>	\$1,225,000* (1x \$200,000)	Also includes \$185,000 OAA funding

- Revenue generated by Program Vendor:

Facility Rental	\$ 85,320
Grants, Gifts, and Contributions	\$684,900
Sales & Program Revenue	\$ 80,280
<b>TOTAL</b>	<b>\$850,500</b>



# Programming Value

- Senior Centers serve 4800+ older adult residents with 75,000+ hours of specific programming & 125,000+ meals annually
- Promote Health & Longevity
  - Socialization & Engagement
  - Mental Acuity
  - Nutritious Meals
  - Physical Fitness, Exercise, and Evidence-based Health classes
  - Volunteerism, Friendship, & Purpose



# Programming Value

- Addresses Social Isolation & Loneliness
  - Loneliness is an epidemic (US Surgeon General)
  - No barriers to participation
- Increases Equity & Democratization
  - Serves older adults who don't have access to high-cost senior living facilities and athletic clubs
  - Engages residents in civic conversation across social spectrum
  - Provides a public forum for the common good



# Commission on Aging Planning

- 2017: Comprehensive Facility & Programming Studies (baseline)
- 2018: Review of Programming in other area senior centers
- 2019: "Young at Heart" Report by Wisconsin Policy Forum
  - Reviewed senior centers in five similar counties
  - Posed questions about the value of maintaining senior centers in MKE
- 2020: "Envisioning the Future of Senior Centers" report
  - Public assessment of value, access, programming, and model of senior centers in Milwaukee County w/500+ responses
- 2023: "MKE HUBS" report
  - Answered questions posed by WI Policy Forum report
  - Affirmed value of maintaining senior center programming
  - Recommended changes to facility model & delivery of programs







- **Programming, Camps & Events at Wil-O-Way**
- **OPD + Easterseals Partnership** Fostering independence, socialization & fun for all abilities
- **Seasonal Recreation:** Bowling, ceramics, cooking, outings, dances
- **Summer Camps & Respite:** Outdoor adventures, goal-setting, inclusive group sessions
- **Special Events:** Holiday dances, talent shows, family gatherings with adaptive supports
- **Tap the Potential:** Skill-building, community integration, volunteer & social opportunities
- **Populations Served**
- Youth & Teens (3–18): Camps, after-school recreation
- Young Adults (15–25): Life skills, independence, vocational readiness
- Adults (18+): Recreation, employment, community engagement
- Older Adults (40+): Wellness, connection, continued activity
- Support also for mental health, AODA, workforce development
- **Impact**
- Expands inclusive recreation across ages
- Provides caregiver respite
- Supports youth transitions
- Builds community-based programs reflecting participant needs
- **Together, OPD & Easterseals celebrate all abilities and remove barriers.**







- **Key Program Features**
  - Daily activities: life skills, arts, music, recreation
  - Community outings: parks, libraries, cultural sites
  - Health & wellness: movement, nutrition education
  - Individualized service plans for participant goals
  - Transportation coordination available
- **Population Served**
  - Adults (18+) with developmental disabilities, autism, cognitive impairments
  - Supportive staff-to-client ratio
  - Focus on independence, friendships, daily living skills, and quality of life
- **Program Impact**
  - Vibrant day program fostering self-esteem, community engagement, and inclusion



# AADSSW

## Adult Day Services of Southeast Wisconsin LLC

- **Key Features**

- Social & recreational: music, art, games, themed events
- Educational enrichment: literacy, current events, skill-building workshops
- Volunteer & community engagement opportunities
- Access trips: museums, YMCA, Milwaukee Public Museum, and more
- Person-centered planning aligned with individual goals

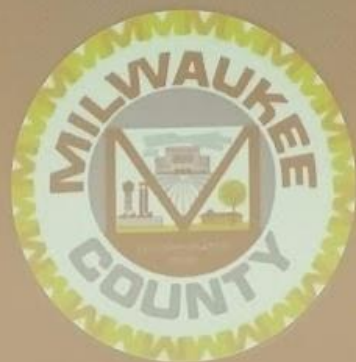
- **Population Served**

- Adults (18+) with developmental & intellectual disabilities
- Inclusive of physical limitations & dual diagnoses
- Focus on community inclusion, personal growth, and functional skills

- **Shared Impact**

- Reflects Milwaukee County's commitment to inclusive, community-based services





- **Wil-O-Way Facility Rentals**
- **Locations**
  - Grant Park – South Milwaukee
  - Underwood Creek Parkway – Wauwatosa
- **About** Accessible community spaces for individuals, families, and organizations. Designed for inclusive events with kitchens, tables, chairs, and accessible restrooms.
- **Events Hosted**
  - **Private Celebrations:** birthdays, showers, graduations, retirements, reunions
  - **Community & Nonprofit:** support groups, advocacy events, inclusive dances, seasonal celebrations (with partners like Easterseals & Goodwill)
  - **Workshops & Trainings:** staff development, caregiver sessions, educational seminars (AV-ready spaces)
  - **Recreational Programs:** adaptive fitness, arts & crafts, social clubs
- **Scheduling**



# Conclusions





# Take Aways

- Senior Centers and Wil-O-Ways continue to provide **valued opportunities for connection, health, learning, and inclusion** for older adults and persons with disabilities.
- All 7 **facilities** have reached or are approaching **end of initial planned life**.
- Current **capital and operational funding averages are insufficient** to maintain the existing facilities and programming.
- Programming, operations and maintenance needs are **non-mandated services that rely almost entirely on tax-levy**, leaving no flexibility for inflation, changes, or unexpected costs.
- Several **reports and community discussions** have been completed to help guide planning efforts.
- The **current fiscal path is unsustainable**.





# Questions?





**MILWAUKEE  
COUNTY**