

# Milwaukee County Parks Emerald Ash Borer Informational Update Spring 2014



# Land Resources

- **Asphalt**
  - Roads - 64 Miles
  - Parking Lots - 131
  - Park Paths – 112 Miles
- **Playgrounds – 113 Units**
- **Trails**
  - Oak Leaf Trail – 118 Miles
  - Hiking Trails – 44 Miles
- **Natural Areas Management 9,000 Acres**
- **Major Landscaping**
- **General Construction**
- **Catch Basin Maintenance and Repair**
- **Forestry Management**

# Forestry Management

- Nursery Operations
- Tree Plantings
- Insect or Disease Treatment
- Pruning
- Removal
- 1.5 Million Trees in Milwaukee County Parks

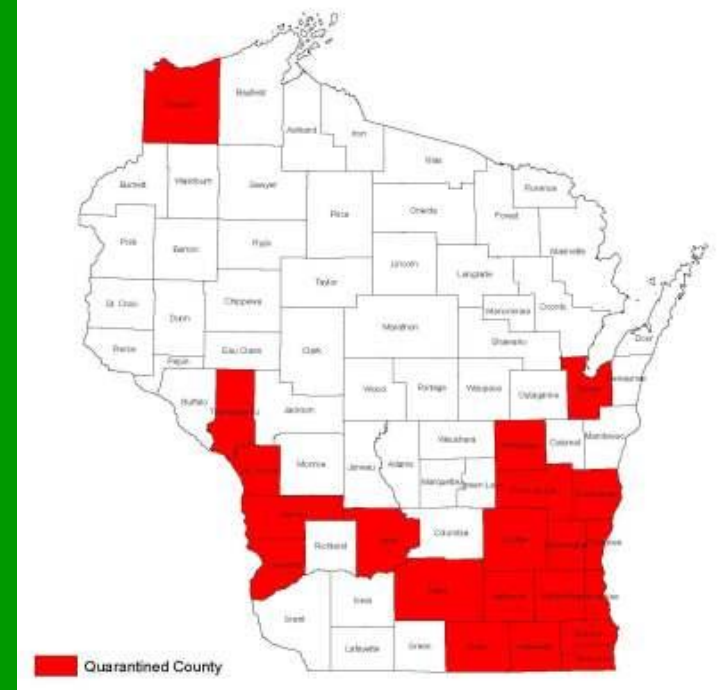
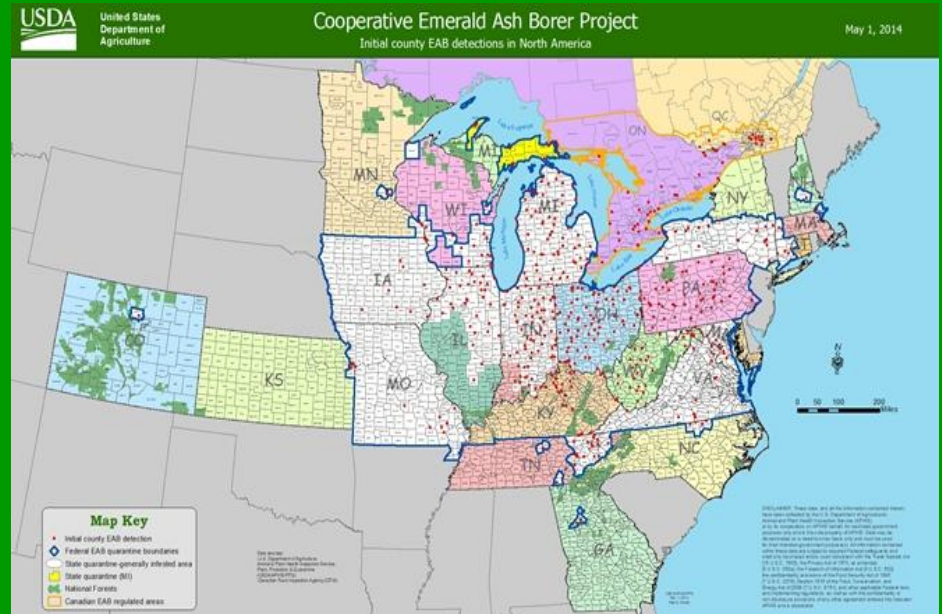
# Ash Trees Population

- 356,000 -Ash Trees in Milwaukee County  
Parks 15,000 acres
- 24 % - of all Park Trees are Ash
- 42,000 - Medium to Large trees in our  
6,000 acres Actively Managed  
Parkland

# Confirmed EAB Locations

## In Milwaukee County

- Brown Deer
- Cudahy
- Franklin
- Greendale
- Greenfield
- Milwaukee
- Oak Creek (2009)
- South Milwaukee (N)
- Wauwatosa (N)
- West Allis (N)



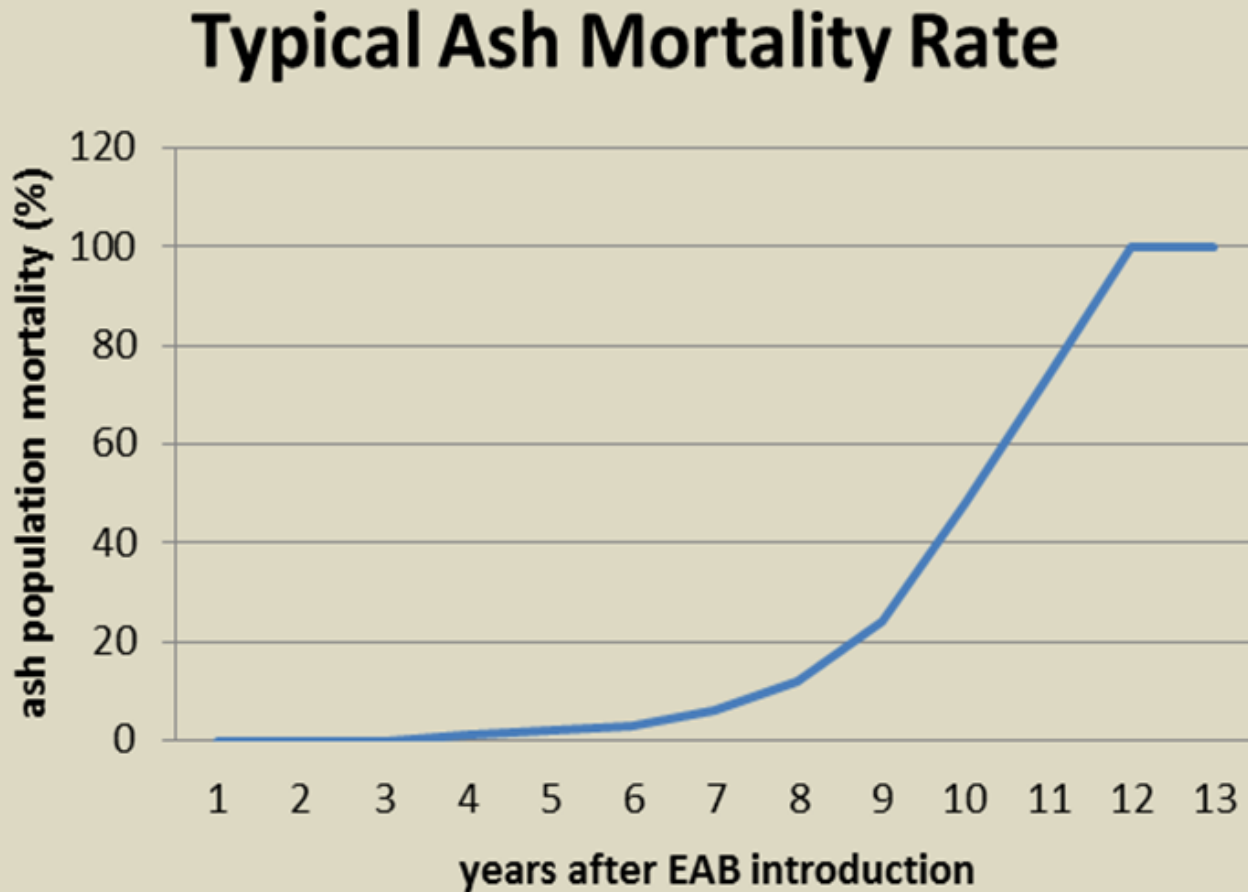
# 27<sup>th</sup> Street and Oakwood Road, Oak Creek, WI



# 27<sup>th</sup> Street and Ryan Road Oak Creek, WI



# Ash Mortality Rate





# Mechanized Tree Removal



# Milwaukee County Ash Utilization





# Partners

- All Milwaukee County Municipalities
- Other communities of Southeastern WI
- MMSD
- WE Energies
- The Park People
- Friends Groups
- WI DNR
- WI DATCP
- US APHIS
- Individual Citizens
- Private Companies in the Wood and Lumber Industry

THANK YOU

ANY QUESTIONS ?