

# KEYED NOTES TO SHEETS:

- 30 year dimensional shingles on ice and water shield on 5/8" plywood deck on dimensional wood framing.
- Prefinished metal trim/ drip.
- Outline of walls below.
- 4" 3000# concrete slab with #9 6x6 WWF and fiberglass reinforcing on 8" stone base.
- 3/4" Composite wood decking for serving counter surface.
- Serving window.

# South Milwaukee Rockets Concession Stand

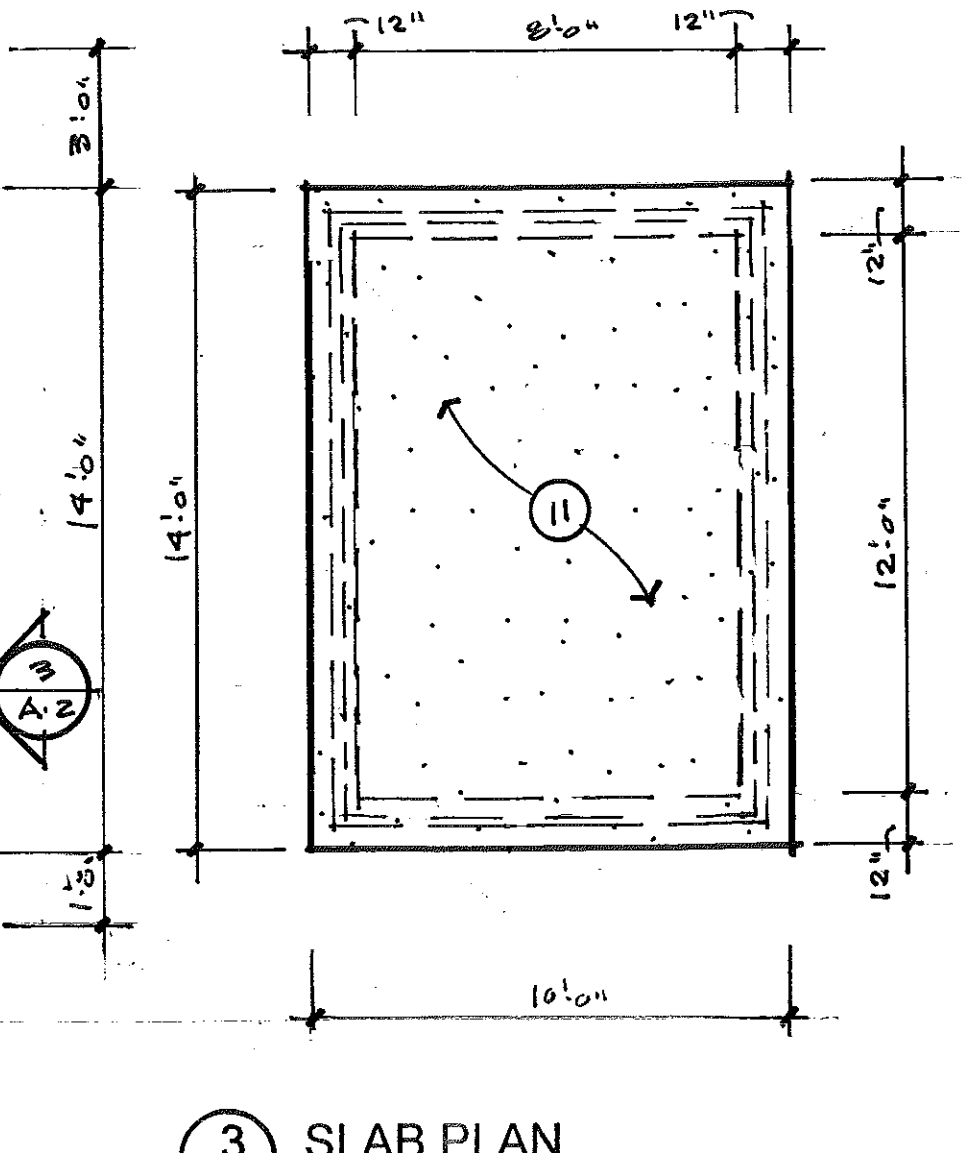
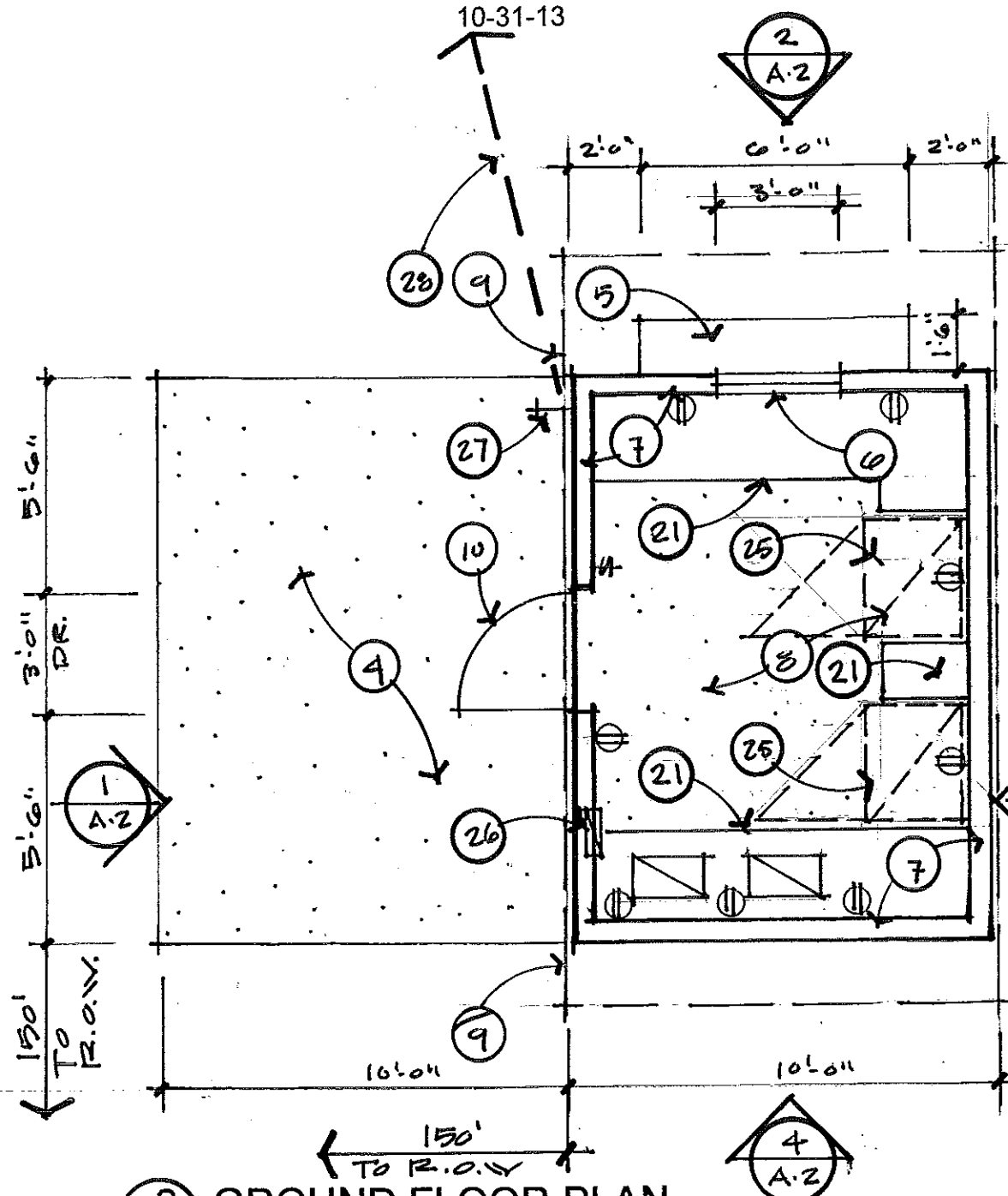
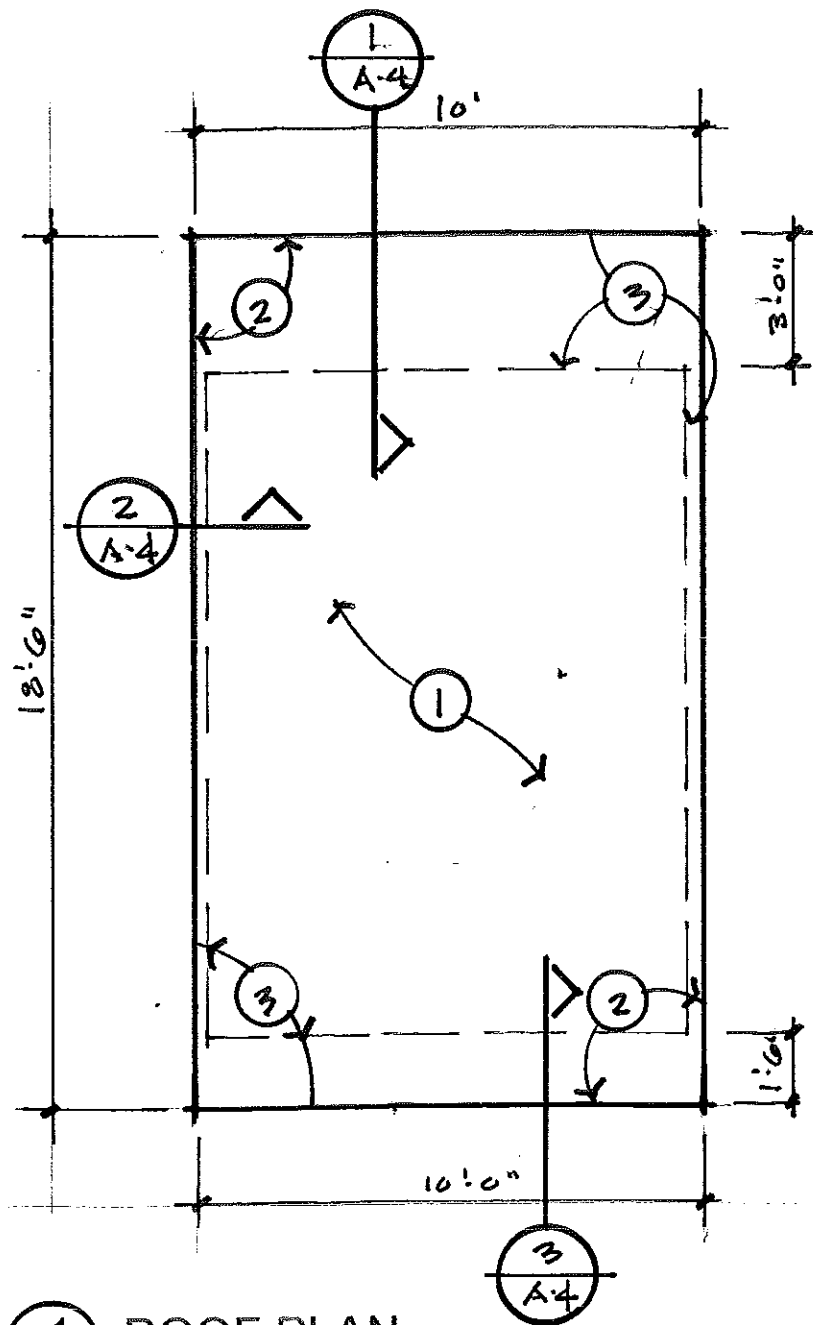
Oak Creek Parkway Field  
Milwaukee County Park System  
South Milwaukee

10-31-13

- 6" 3000# fiberglass reinforced concrete slab with 6x6 #9 WWF with 12"x12" thickened edges reinforced with (2) continuous #4 rebar on 6 mil vapor retarder.
- 5/4 Prefinished composite wood trim.
- Painted plywood shutters.
- Painted 5/8" drywall ceiling finish.
- Ceiling mounted fluorescent light fixtures with plastic lenses.
- #2, 2x12 rafters at 16" o.c.
- 2x12 solid wood blocking.
- (2) 2x12 window / door header.
- Steel shelf brace 16" o.c.
- Fasten treated wood plates to slab with quick-set anchors at 24" o.c.
- 24" plastic laminate counter with metal wall brackets.
- Simpson H-3 rafter hurricane straps at ends of rafters.

# A-1

10-31-13



**1** ROOF PLAN  
SC: 1/4" = 1'-0"

**2** GROUND FLOOR PLAN  
SC: 1/4" = 1'-0"

**3** SLAB PLAN  
SC: 1/4" = 1'-0"

- North
- Exterior wood framed wall with 2x4 studs at 16" o.c. with 1/2" CDX plywood sheathing, air-infiltration barrier with prefinished Hardiboard lap siding.
  - Sealed concrete slab.
  - Roof overhang above with prevented Hardiboard soffit material.
  - 3ft x 7ft Painted hollow metal door and frame. With stainless steel hardware featuring lever operated latches.



**Michael Peine Architects**  
4617 N. Idlewild, Whitefish Bay WI.  
608-516-0531  
mpeine@wi.rr.com

- North
- 5/8" painted drywall interior wall finish.
  - 6" covered rubber base.
  - Refrigerator by others.
  - Power panel.
  - Exterior frost proof hose bib.
  - Underground trench for power and water to source on site.

