

# 2025 Flood Response

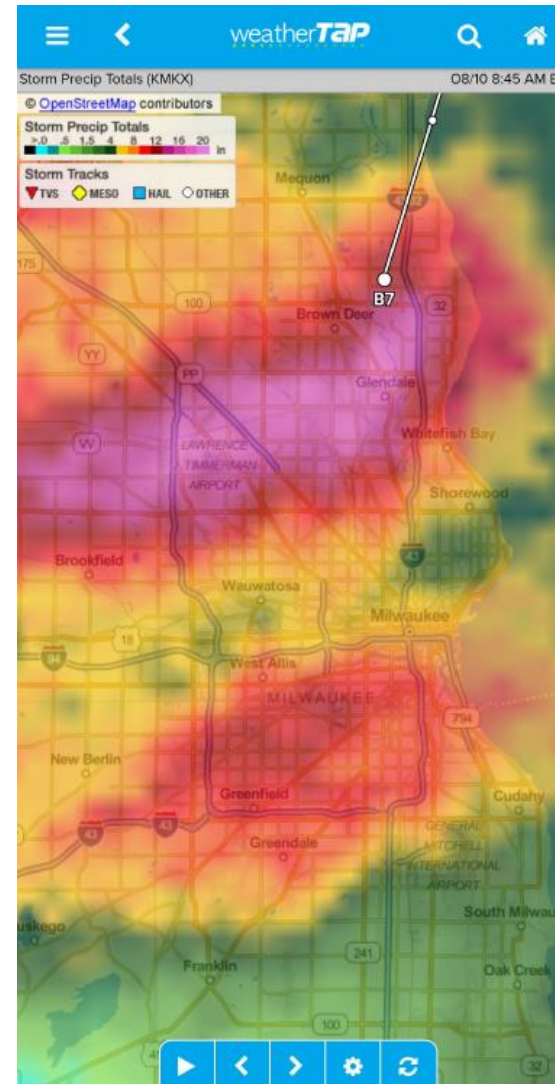
Presented by the  
Office of Emergency Management

Updated Sept. 9, 2025



# Background

- **Aug. 9 to Aug.10:** 1,000-year flood event (14.5" in 24 hours)
- 5B+ gallons overflow reported by MMSD
- 3,400 homes assessed, >1,800 destroyed or major damage
- Tens of thousands without power; widespread sewage contamination
- Emergency response, shelters, volunteers mobilized

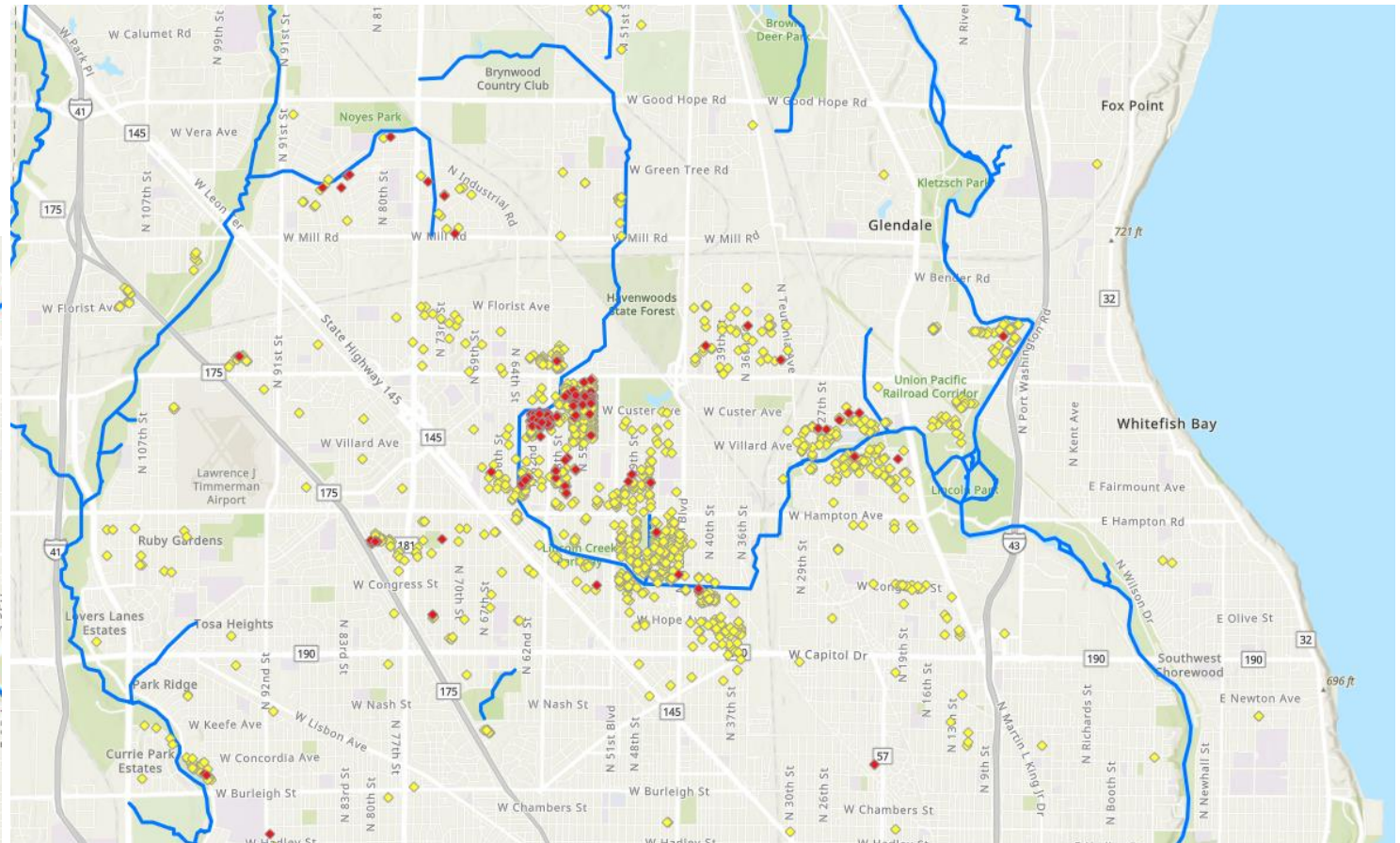
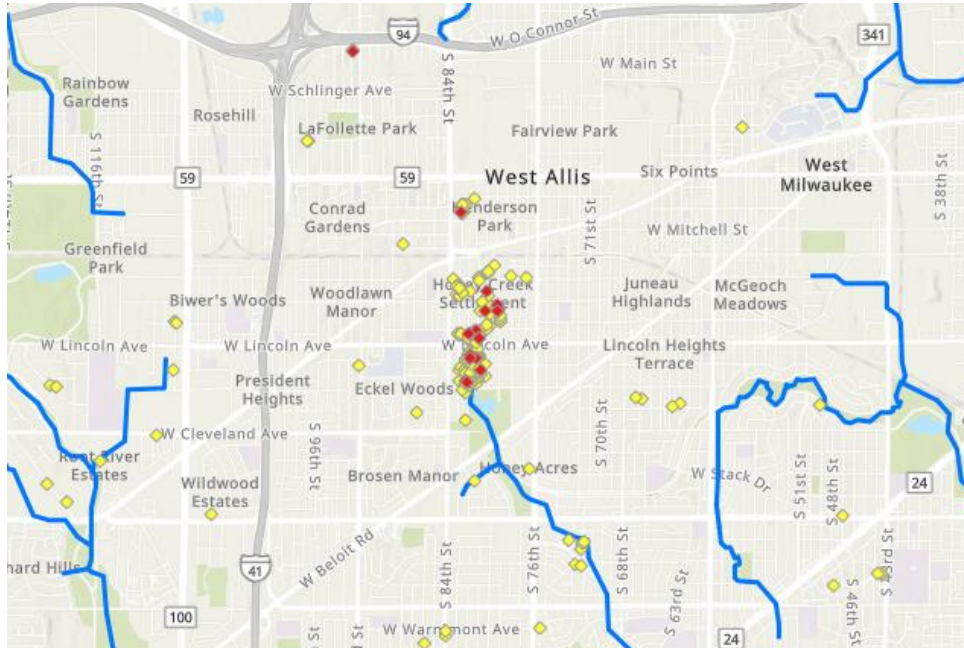


# Impact to Milwaukee County

- **Milwaukee County:** ~952,000 residents, 19 municipalities, 241 sq. miles
- **Concentrated impacts:** Northwest Milwaukee & multiple municipalities
- 1,100+ basement backups reported to MMSD
- Major disruptions to roads, schools, businesses, and utilities



**Damage level:**  
Red = Destroyed  
Yellow = Major

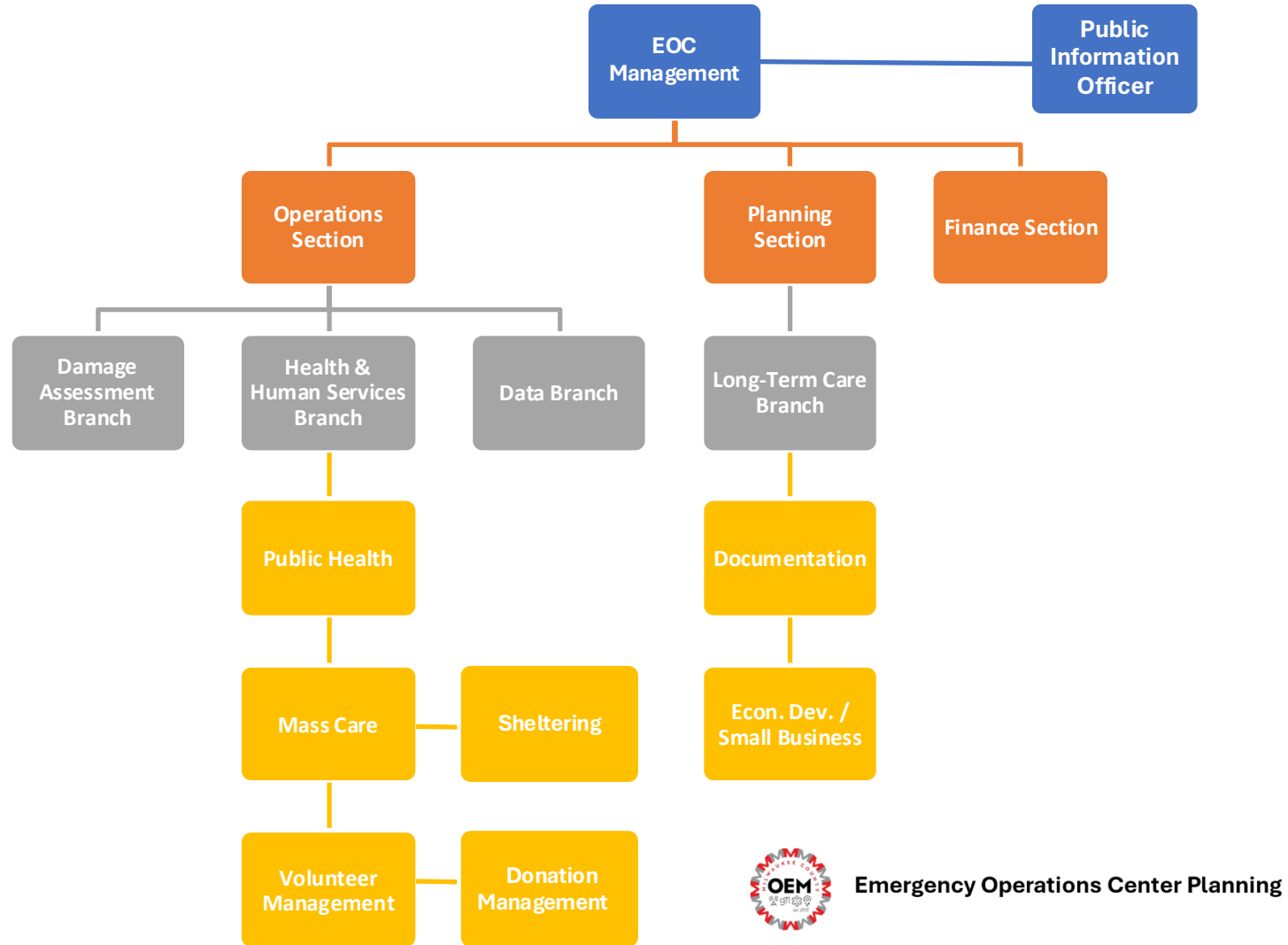


# EOC Activation

- **Aug. 9:** Initial EOC stood up within hours (Northshore Fire Station 82)
- **Priorities:** support field responders & launch damage assessment
- **Aug. 18:** Transitioned to permanent EOC at OEM offices
- **Sept 5:** County EOC demobilized; event monitoring and assistance continued under OEM operations
- **Membership:** OEM, CEX's Office, SBP, DHHS, Comptroller



# EOC Structure



Emergency Operations Center Planning





# Operations Section

- Developed smart reporting tool for real-time needs
- Coordinated 3,400+ property assessments (1st ever pre-verified dataset for FEMA)
- Supported public damage assessments (PDAs) with WEM & FEMA; added hundreds more verified records
- Unified sheltering, volunteer management, and mass care efforts
- Mold dashboard for abatement & public health guidance
- Syndromic Surveillance with EMS Data



# Support to Residents

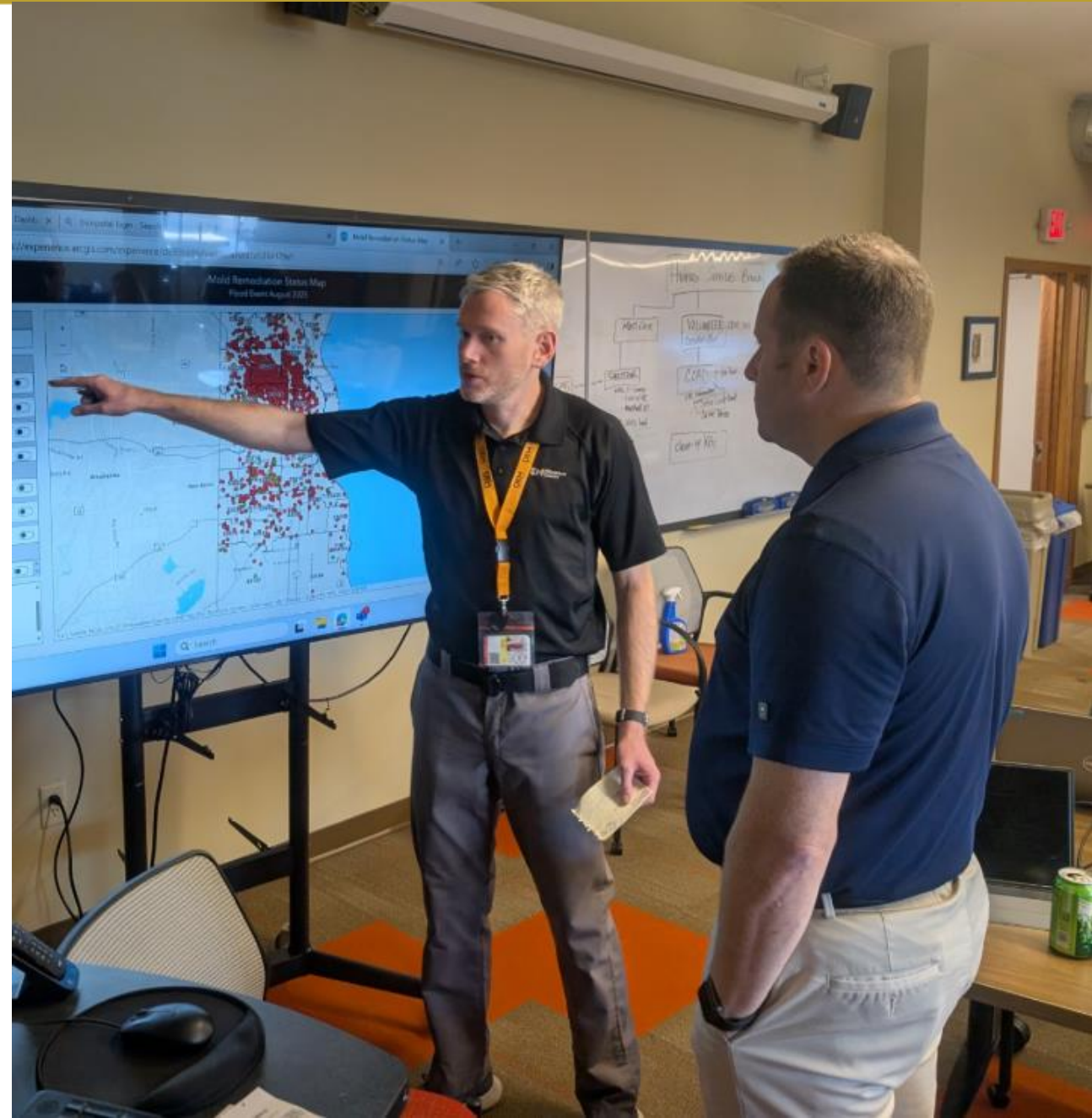
- 2-1-1 reporting → 300 volunteers deployed for assessments
- Shelters, mass care, volunteer management
- Public health guidance (cleanup, mold remediation)
- Targeted outreach to vulnerable populations (seniors, renters, limited-English-proficient residents)
- Hosted 3 Multi-Agency Resource Centers (MARC)s, one-stop locations where residents can connect with multiple agencies for recovery assistance (***avg. 200+ households each***)





# Planning Section

- Comprehensive staffing & resourcing plan
- Streamlined documentation to meet FEMA/WEM requirements
- Launched regular cross-section coordination meetings
- Initiating long-term planning for recovery



# Public Information Officer

- **Central website launched:**  
[county.milwaukee.gov/2025FloodResources](https://county.milwaukee.gov/2025FloodResources)
- Multilingual resources (English, Spanish, Hmong, Arabic)
- 6 press releases, 2 media briefings, ~100 media stories
- Graphics & PSAs for FEMA process, cleanup safety, resource guidance



# Finance Section

- Tracking county agency costs & damages
- Supporting documentation for FEMA/WEM reimbursement
- As of Aug. 29, preliminary PA damages = est. \$52M countywide (including municipalities)



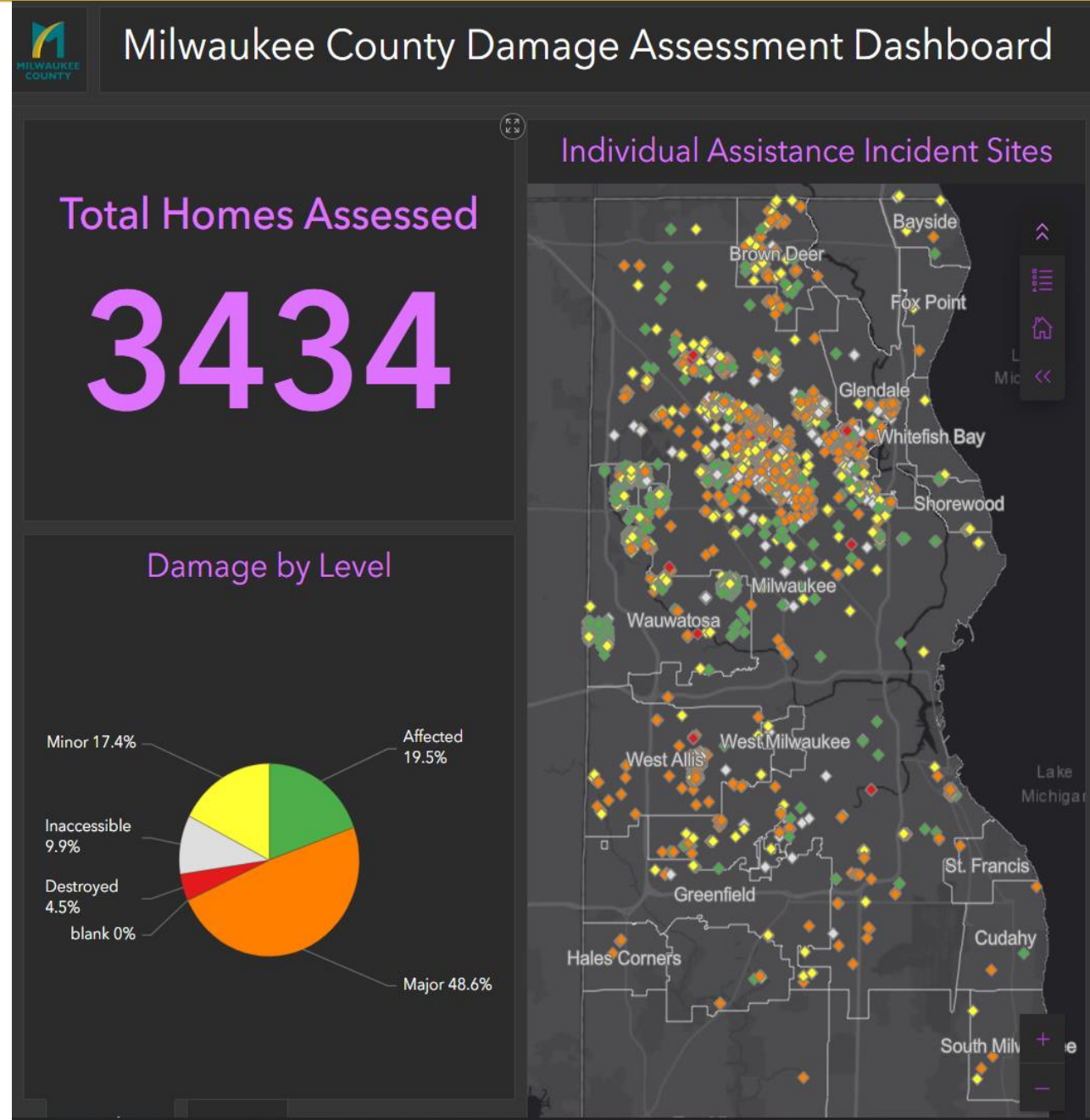
# FEMA Application

- **Individual Assistance (IA):** Initial/local assessments submitted & verified by FEMA
- **Public Assistance (PA):** Initial assessments submitted
  - Sept. 2: submitted for FEMA virtual review
  - Sept. 8: verification starts
    - As of Aug. 29, preliminary PA damages = est. \$52M countywide (including municipalities)
- Both programs critical to households & local government recovery
- **U.S. Small Business Administration (SBA)** may be available to assist with loans to privately owned businesses and residents.



# Key Activities

- **Aug. 10:** County Executive Crowley Declares State of Emergency for Milwaukee County
- **Aug. 11:** Gov. Evers Declares State of Emergency ([Executive Order #272](#))
- **Aug. 15:** FEMA IA initial/local damage assessment completed
  - Data submitted and verified by FEMA prior to their arrival
  - 574 additional properties verified during the FEMA IA assessment
- **Aug. 18:** Permanent EOC moved to OEM offices
- **Aug 27:** Gov. Evers [Requests](#) Presidential Disaster Declaration from President Trump
- **Sept. 2:** PA application submitted
- **Sept. 8:** FEMA PA verification begins





# Next Steps



- Continue FEMA documentation & reimbursement tracking
- Launch long-term recovery planning
- Provide updates as FEMA declaration status evolves
- **IF** FEMA assistance is approved, the County will host Disaster Recovery Centers (DRCs)





# Questions?

Thank you!



**MILWAUKEE  
COUNTY**