



**MILWAUKEE COUNTY DEPARTMENT
OF PARKS, RECREATION & CULTURE**

Ranger Program Update



PARK RANGER MISSION STATEMENT

The mission of the Milwaukee County Park Ranger program is to provide informational, educational, and safety services to the general public. Key components of this mission include revitalizing or establishing Park Watch groups and monitoring activities in the parks to ensure patron safety and voluntary compliance with park rules and regulations. The Rangers will assist field staff by monitoring rentals, providing security during special events, ensuring fee compliance, selling permits, and crime prevention activities.





RESPONSIBILITIES

- Ensure compliance with all Park rules and regulations
- Communicate Park rules and regulations to patrons
- Establish and maintain positive working relationships with citizens and staff, including Park Watch Groups
- Assist patrons with information regarding activities and amenities within the Parks
- Sale of permits including annual dog tags, disc golf permits, boat launch fees, and picnic permits
- Issue parking violation citations
- Assist all other Park staff by informing them of areas needing repair or clean up
- Assist in vandalism and theft investigations





BICYCLE AND FOOT PATROLS OF PARKS AND TRAILS

- Park Rangers follow all bicycle safety, trail etiquette and traffic laws
- Inspecting parks, trails, and amenities for damage, vandalism, and unsafe conditions
- Monitoring patron activity for safety and non-compliance of rules and regulations
- Documenting patron contacts and compliance issues
- Effective communication with park staff on all of the above
- Knowing the amenities and features of the park or trail being patrolled
- Performing building security checks – assuring doors and windows are secured



BUILDING RENTALS

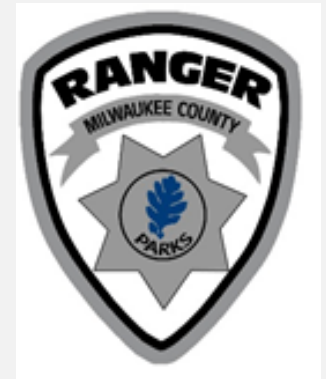
- Knowing what rental permits have been issued for your patrol area
- Patrolling the rentals in your squad area and directly communicating with the permit holder
- Knowing the conditions of the permits and rental agreements in your patrol area.
 - For example: start and end times, number of patrons, alcohol use, teen parties, use of inflatable toys, etc.
- Reporting and documenting permit violations
- Assisting park staff with rentals when needed





FACILITY SECURITY

- Performing and documenting security and safety inspections
- Assisting in corrective action when requested
- Monitoring, installation, and maintenance of electronic surveillance systems
- Performing training on building security systems
- Documenting assets
- Investigation of vandalism and theft

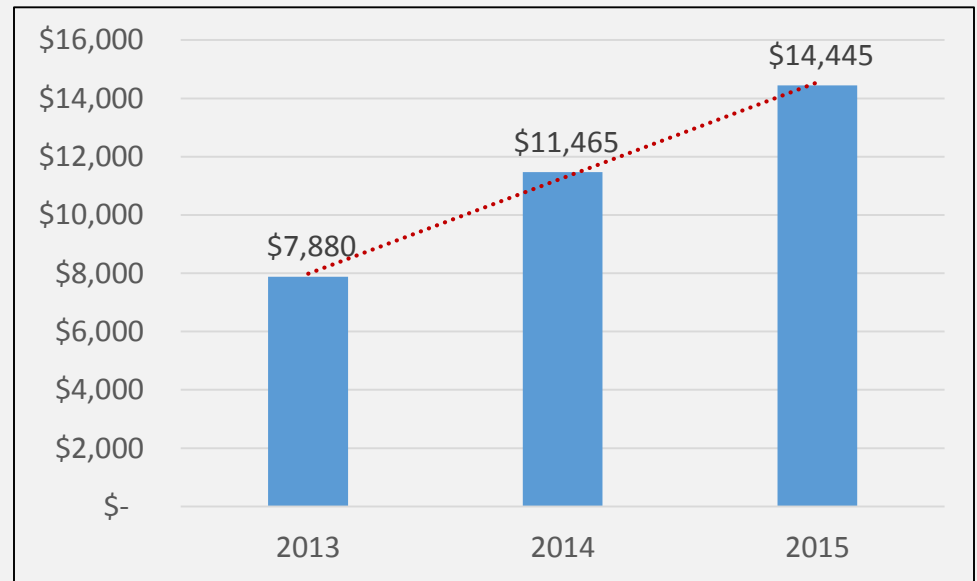




DOG EXERCISE AREA PERMITS

- 2013: \$7,880
- 2014: \$11,465
- 2015: \$14,445 (as of 8-23-15)

- 45.5% increase from 2013 to 2014
- 18% increase from 2014 to 2015
- Increase since 2013 is **83.3%**





DISC GOLF PERMITS

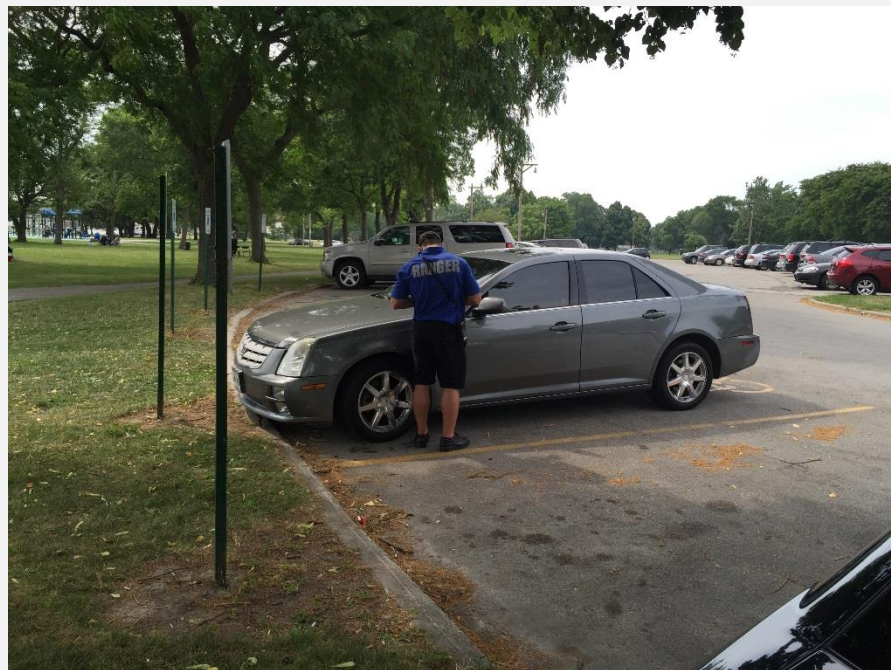
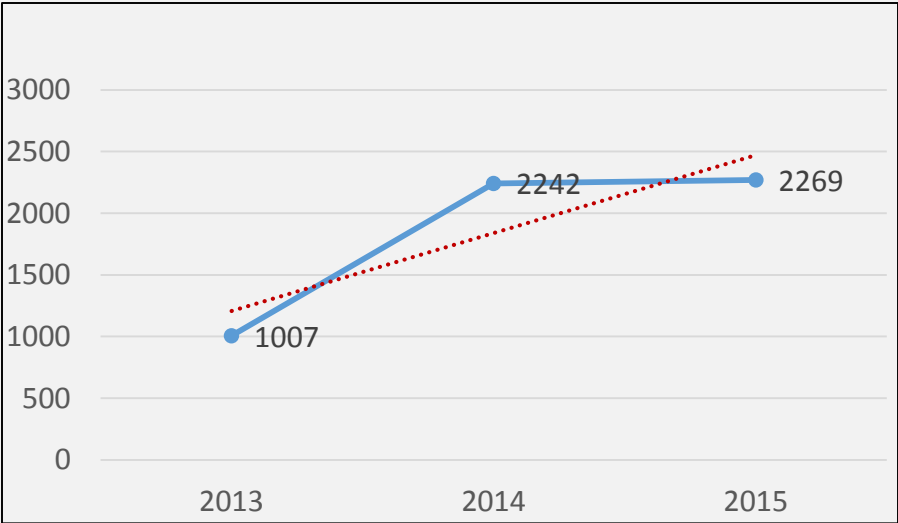
- 1st year charging for Disc Golf
- As of August 23, 2015: **\$7,945**





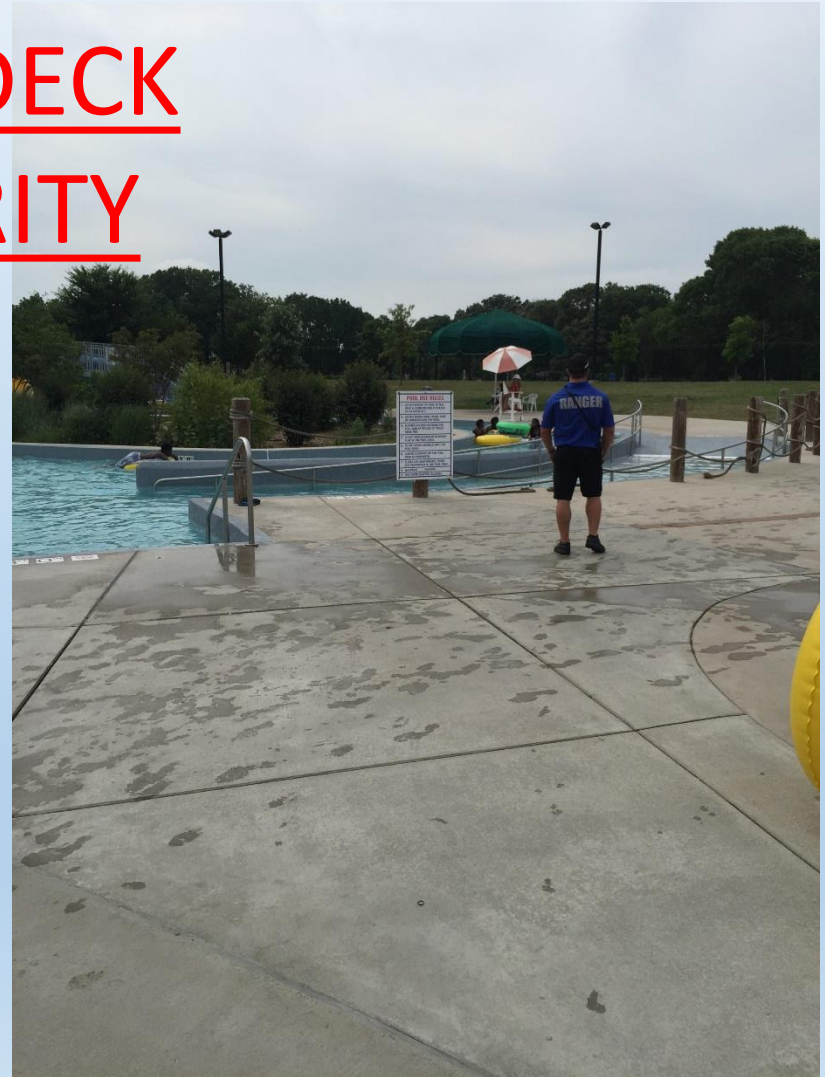
PARKING CITATIONS

- 2013: 1007 citations
- 2014: 2242 citations
- 2015: 2269 citations (as of 8-23-15)
- 123% increase from 2013 to 2014





POOL DECK SECURITY





SPECIAL EVENTS

- Assist with the collection of parking fees
- Providing security services for cash handling activities and transport of cash
- Checking permits for sales/vendors
- Partnering with law enforcement agencies on a continual basis
- Assisting with crowd and traffic control including setting up barricades, cones, etc.
- Being a park ambassador and assisting patrons when needed
- Enforcing park rules and regulations



MAJOR EVENTS

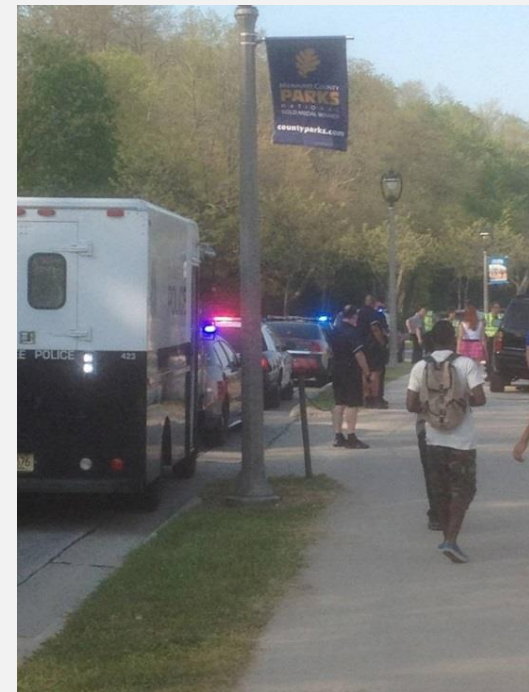
- Farmer's Markets
 - Proms
- Music Under Glass
 - Red Arrow Park
 - Kite Festival
 - Park Watch
- South Shore Frolics
 - Brewfest
- King Back to School





MAJOR EVENTS

- Traveling Beer Gardens
- Permanent Beer Gardens
 - 97 Annual Concerts
 - National Night Outs
 - Big Bang
 - July 3
 - July 4
 - Air Show





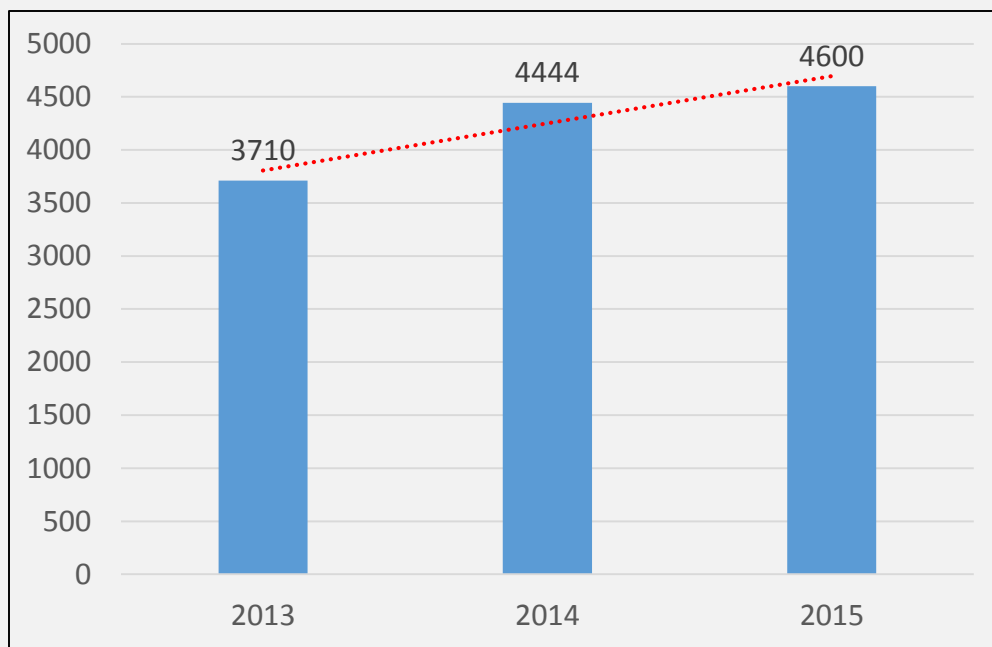
RANGER CAREER PATHS

- Robert Worzalla-*Milwaukee County Sheriff's Office*
- Joe Sanchez-*Milwaukee Police Department*
- Alex Sokol-*Milwaukee County House of Corrections*
- James Woods-*Wauwatosa Police Department*
- Lakesha Collins-*Wisconsin State Patrol*
- Amy Mann-*currently in the MATC Police Academy*



TRAINING

- InCop
- ROADeo
- Active Shooter
- Ranger Training
- Snow Plow
- Skid Steer
- Managerial
- CPR/AED
- Wading Pool
- Seasonal Orientation
 - Essential Skills
 - Harassment
 - Performance
- Customer Service
 - Leadership
- Confined Space
- Wisconsin Hazardous Materials
 - Accident Reporting
 - Toro
 - Pool Chemical Identification
 - Night Patrol
 - Fit Mask/Proper PPE
 - Incident Report Training
- Standard Response Protocol
 - Lock out/Tag out
 - OSHA
 - Disc Golf
 - LMS
- Communication Skills





Safety



- 10 hour - OSHA Certifications
- 30 hour – OSHA Certifications
- Personal Protective Equipment
- Personal Safety and Awareness
- Health and Wellness



2015 HAS BEEN A BANNER YEAR!!!



MILWAUKEE COUNTY
PARKS



QUESTIONS

