



I-794 LAKEFRONT GATEWAY PROJECT

**MILWAUKEE COUNTY BOARD
PARKS, ENERGY & ENVIRONMENT COMMITTEE
MEETING**

JUNE 16, 2015





PRESENTATION AGENDA

- PROJECT PURPOSE & OVERVIEW
- LAND OWNERSHIP AND USE
- PROJECT SCHEDULE
- KEY FEATURES:
 - BICYCLE AND PEDESTRIAN FACILITIES
 - LANDSCAPING
 - STREETSCLAPING – CLYBOURN & LINCOLN MEMORIAL DRIVE
 - STORM WATER ENHANCEMENTS





2016 CONSTRUCTION: LAKEFRONT GATEWAY



Lakefront gateway project purpose:

- Improve bicycle, pedestrian and vehicular connectivity between Downtown and the Third Ward
- Reduce the footprint of the elevated urban freeway
- Improve aesthetic appeal
- Open up land for potential economic development





EXISTING FOOTPRINT



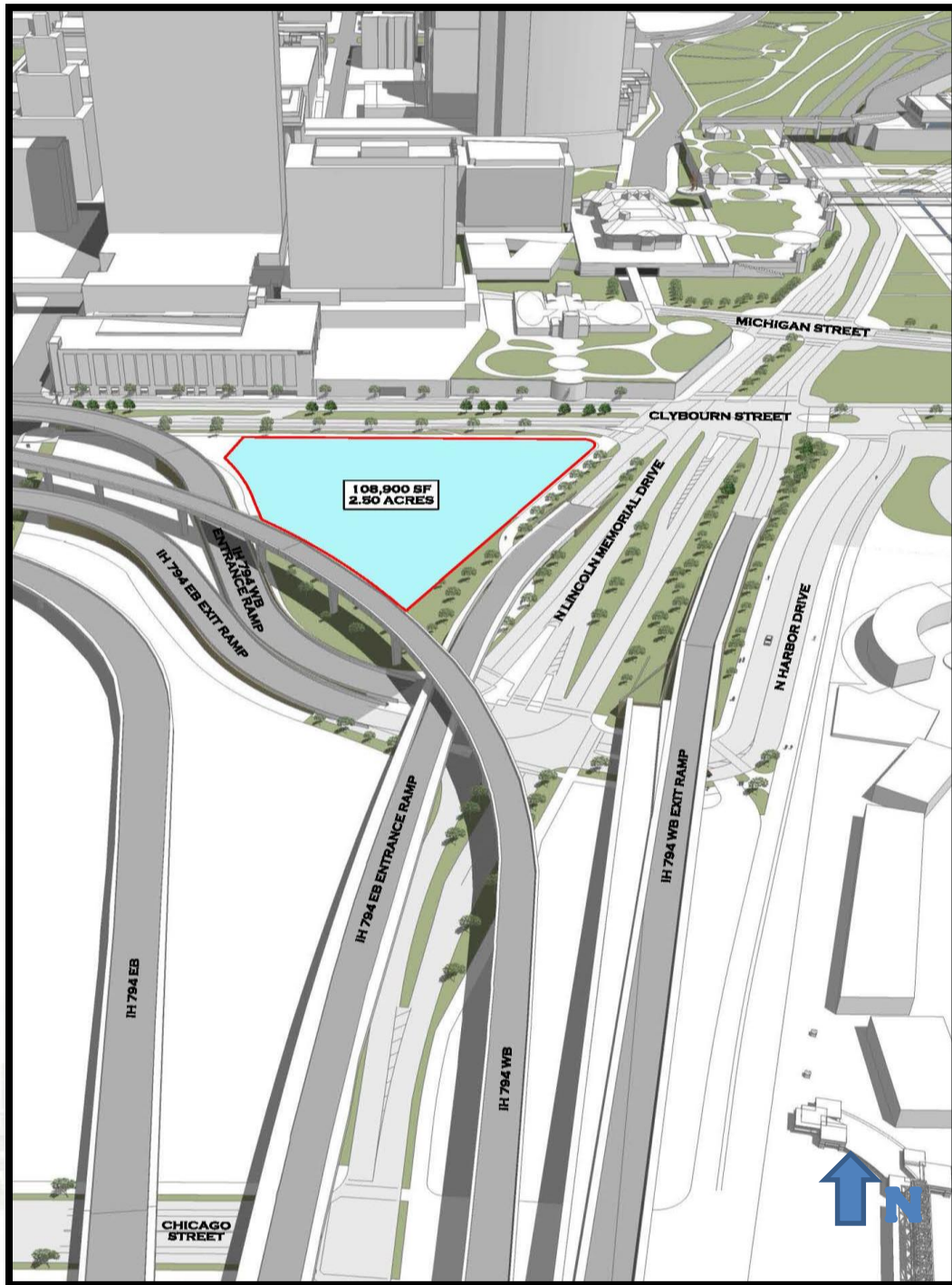


PROJECT OVERVIEW





PROJECT OVERVIEW



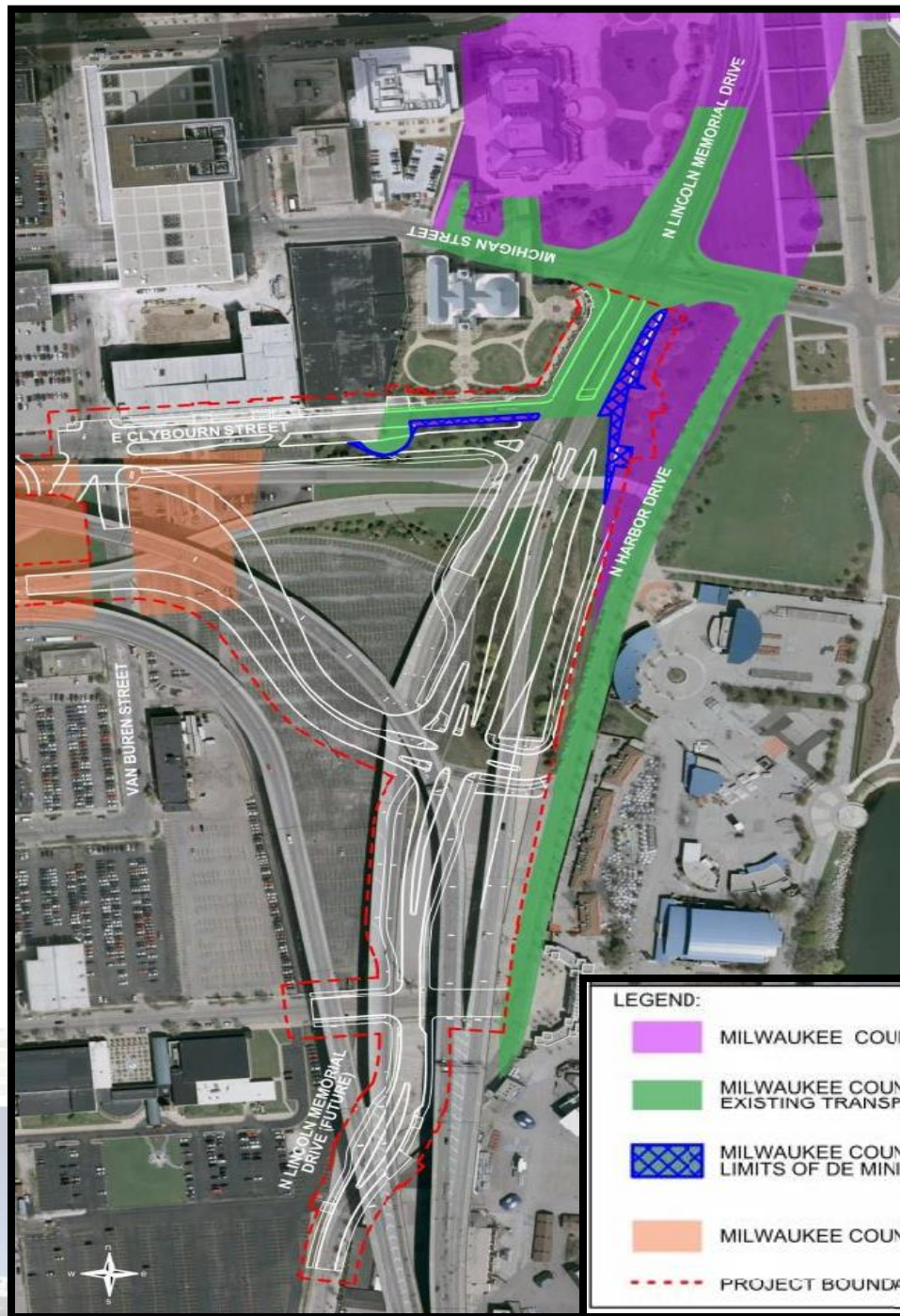


EXISTING LAND OWNERSHIP





AREA PARK LAND USE



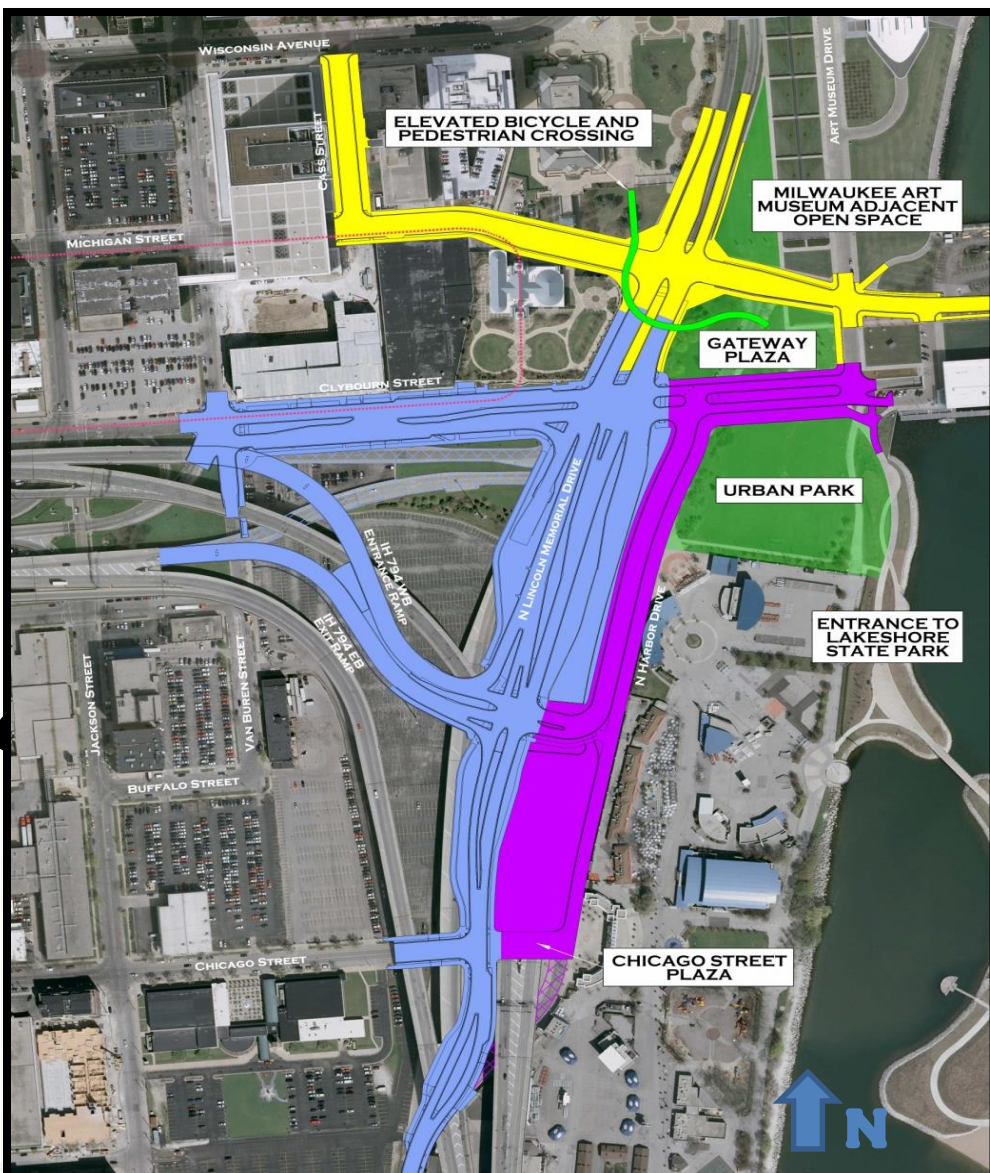
LEGEND:

-  MILWAUKEE COUNTY PARK LAND
-  MILWAUKEE COUNTY PARK LAND - EXISTING TRANSPORTATION USE
-  MILWAUKEE COUNTY PARK LAND - LIMITS OF DE MINIMIS USE
-  MILWAUKEE COUNTY LAND
-  PROJECT BOUNDARY





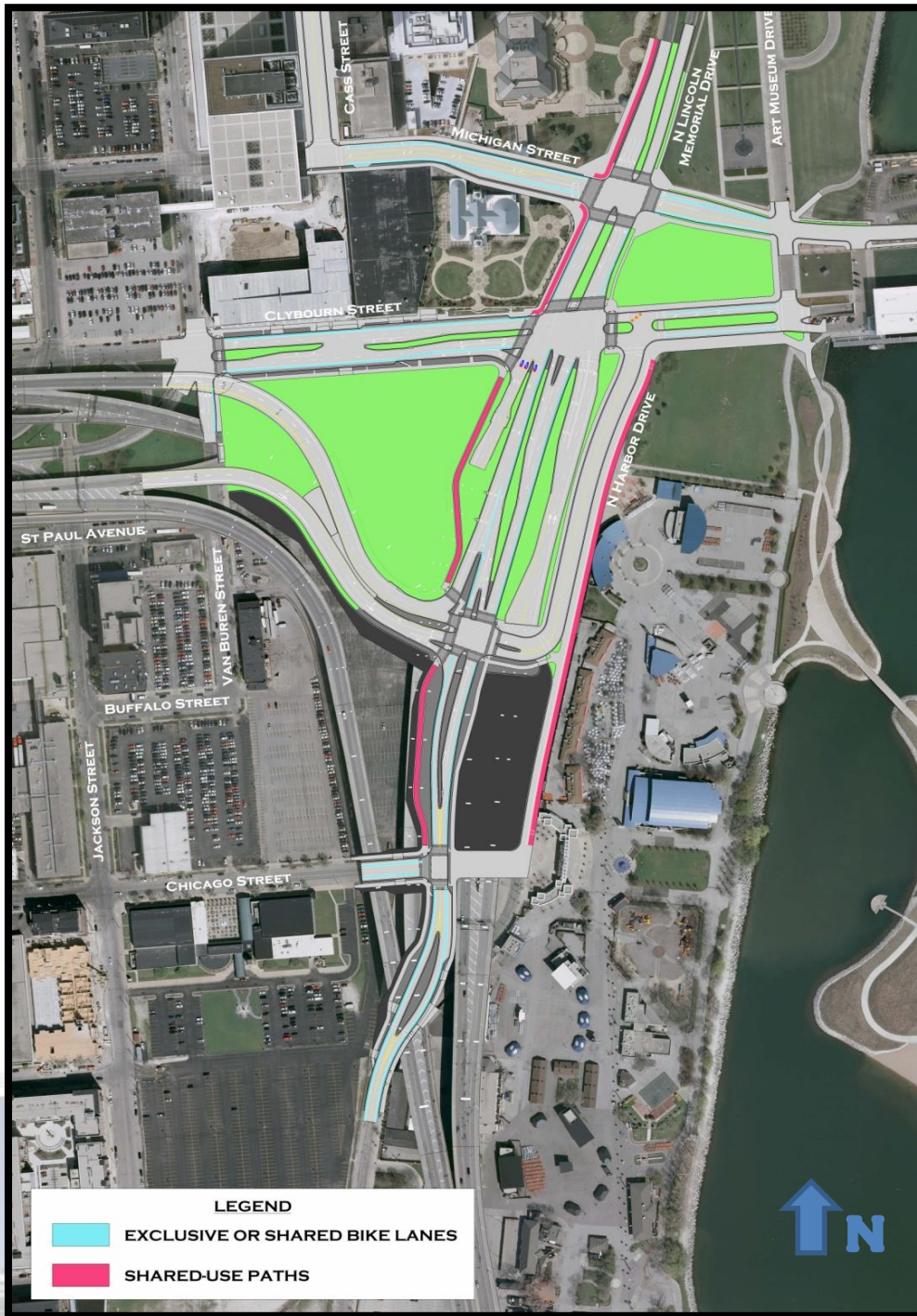
PROJECT BREAKDOWN & SCHEDULE



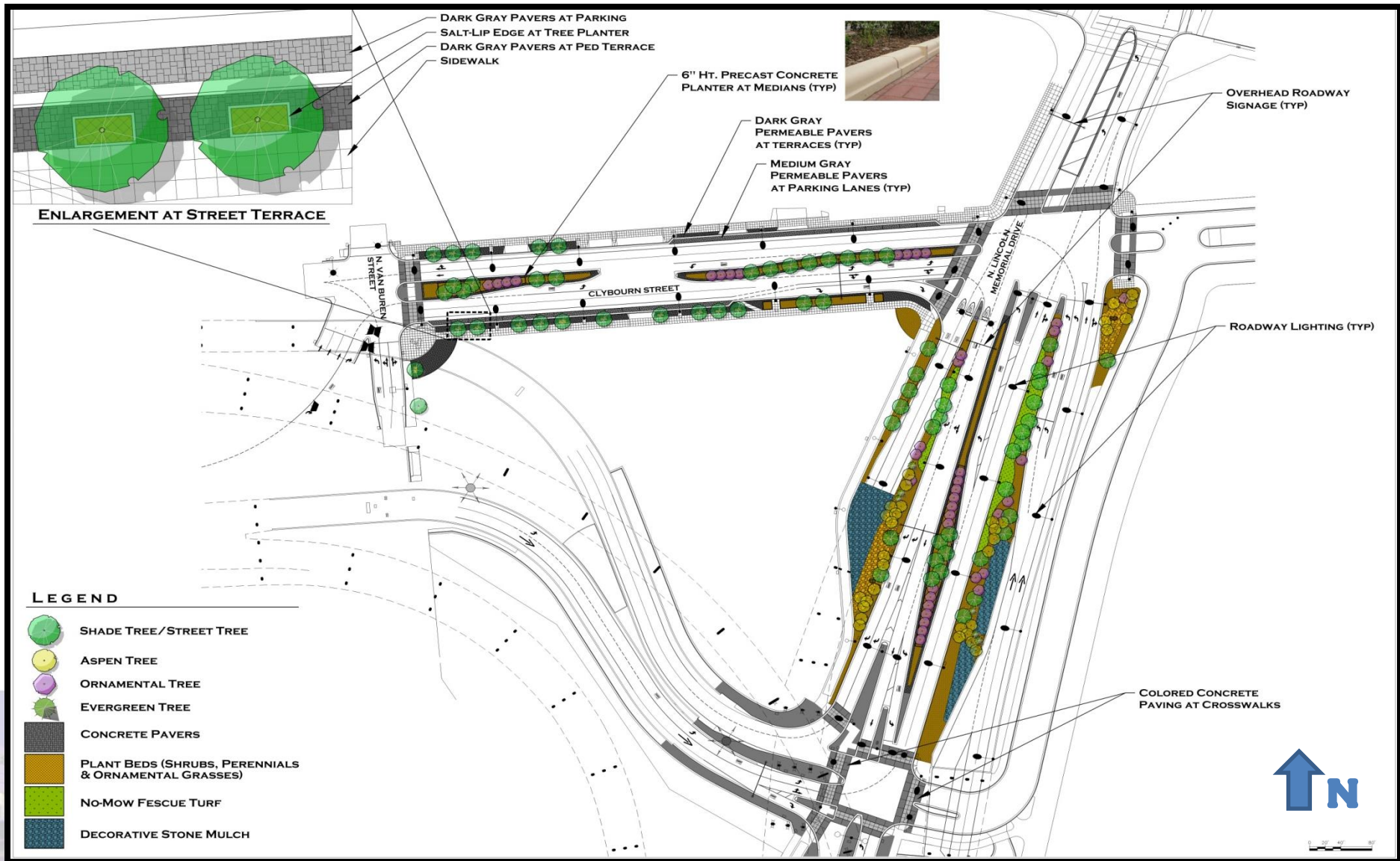
	2014												2015												2016												2017											
	J	F	M	A	M	J	J	A	S	O	N	D	J	F	M	A	M	J	J	A	S	O	N	D	J	F	M	A	M	J	J	A	S	O	N	D	J	F	M	A	M	J	J	A	S	O	N	D
HOAN BRIDGE/LAKE FREEWAY CONSTRUCTION	[Orange bar]																																															
LAKEFRONT GATEWAY DESIGN	[Pink bar]																																															
2016 CONSTRUCTION - STAGE 1	[Blue bar]																																															
2016 CONSTRUCTION - STAGE 2	[Blue bar]																																															
2016 CONSTRUCTION - STAGE 3 AND 4	[Blue bar]																																															
2016 CONSTRUCTION - STAGE 5	[Blue bar]																																															
HARBOR DRIVE & CLYBOURN STREET EXTENSION	[Purple bar]																																															
MICHIGAN & CASS STREET	[Yellow bar]																																															
	PIM #1												PIM #2												PIM #3												PIM #4											



BICYCLE AND PEDESTRIAN FACILITIES



LANDSCAPING OVERVIEW



DARK GRAY PAVERS AT PARKING
SALT-LIP EDGE AT TREE PLANTER
DARK GRAY PAVERS AT PED TERRACE
SIDEWALK



6" HT. PRECAST CONCRETE
PLANTER AT MEDIANS (TYP)

DARK GRAY PERMEABLE PAVERS
AT TERRACES (TYP)

MEDIUM GRAY PERMEABLE PAVERS
AT PARKING LANES (TYP)

OVERHEAD ROADWAY
SIGNAGE (TYP)

ENLARGEMENT AT STREET TERRACE

ROADWAY LIGHTING (TYP)

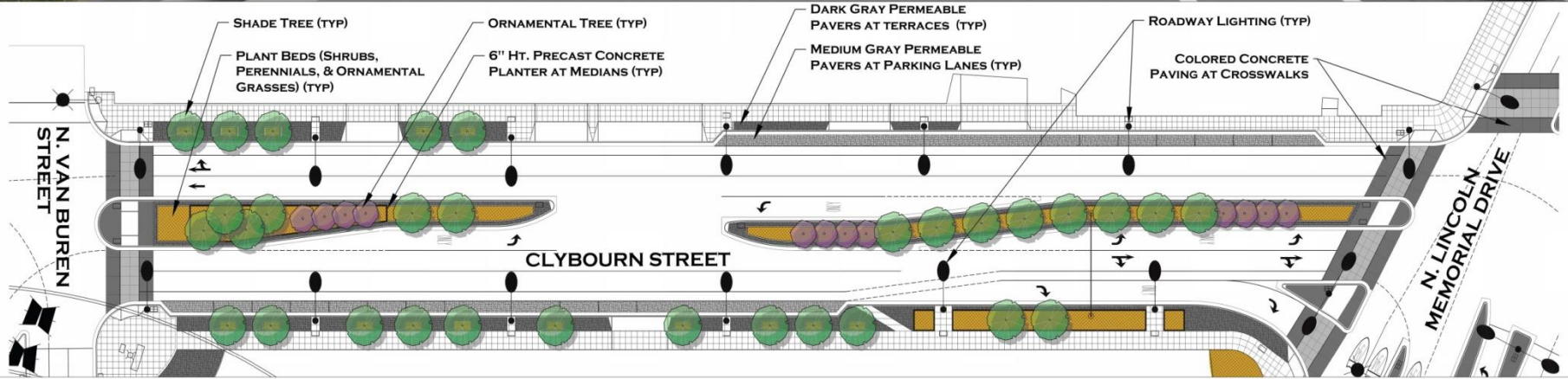
- LEGEND**
- SHADE TREE / STREET TREE
 - ASPEN TREE
 - ORNAMENTAL TREE
 - EVERGREEN TREE
 - CONCRETE PAVERS
 - PLANT BEDS (SHRUBS, PERENNIALS & ORNAMENTAL GRASSES)
 - NO-MOW FESCUE TURF
 - DECORATIVE STONE MULCH

COLORLED CONCRETE
PAVING AT CROSSWALKS



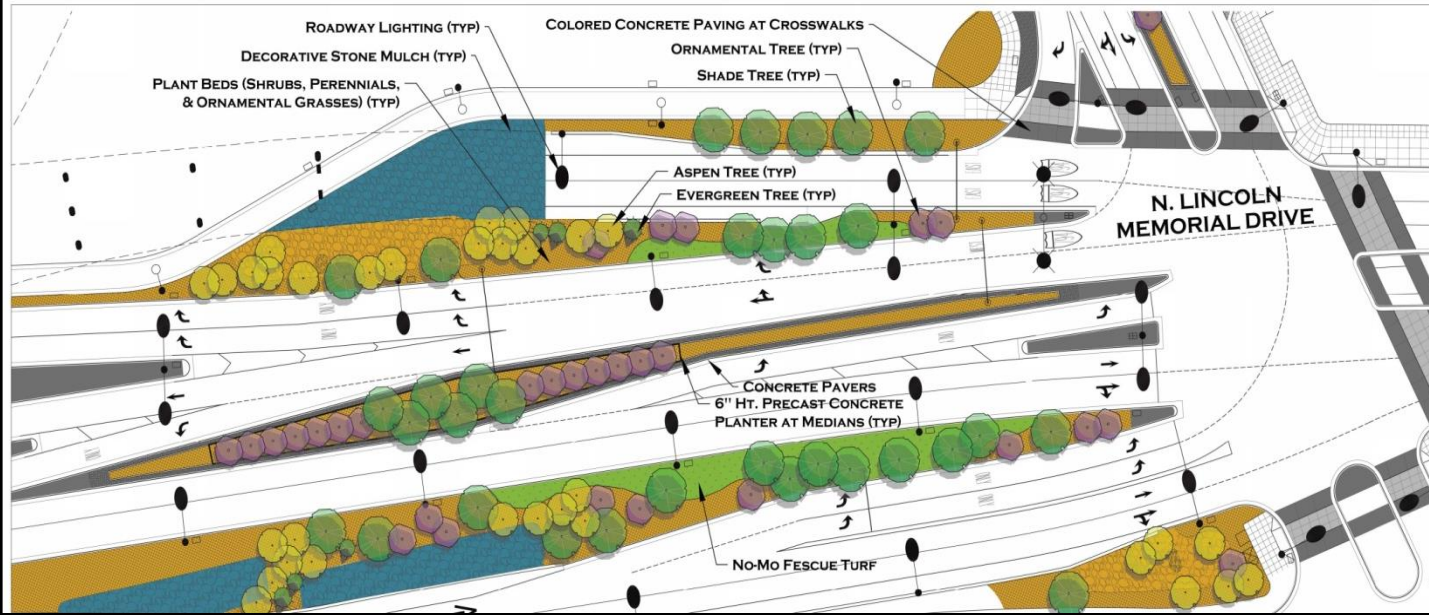


CLYBOURN STREET OVERVIEW



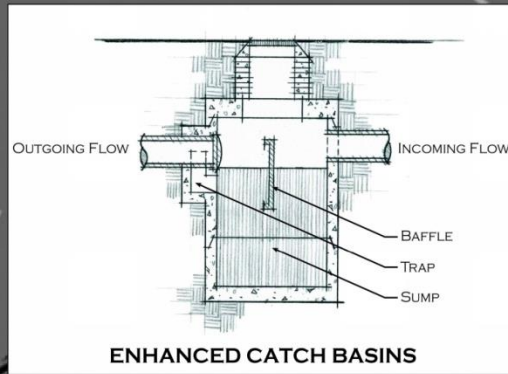


LINCOLN MEMORIAL DRIVE OVERVIEW





STORM WATER ENHANCEMENTS



PROJECT

CONTACT INFORMATION

Carolynn Gellings, P.E.

Wisconsin Department of Transportation

414-750-3233

Carolynn.Gellings@dot.wi.gov



Greg Patin

414.286.5728

City of Milwaukee

Department of City Development

Greg.Patin@milwaukee.gov

