

**Mitchell Park Horticultural  
Conservatory**

**Presented to:  
Milwaukee County**

**January 4, 2017**

**—  
GRāEF**

---

# Current Conditions

DRAFT

# Current Conditions

---

## Construction

- Concrete frame with steel plates at window attachment
- Aluminum hubs and window system



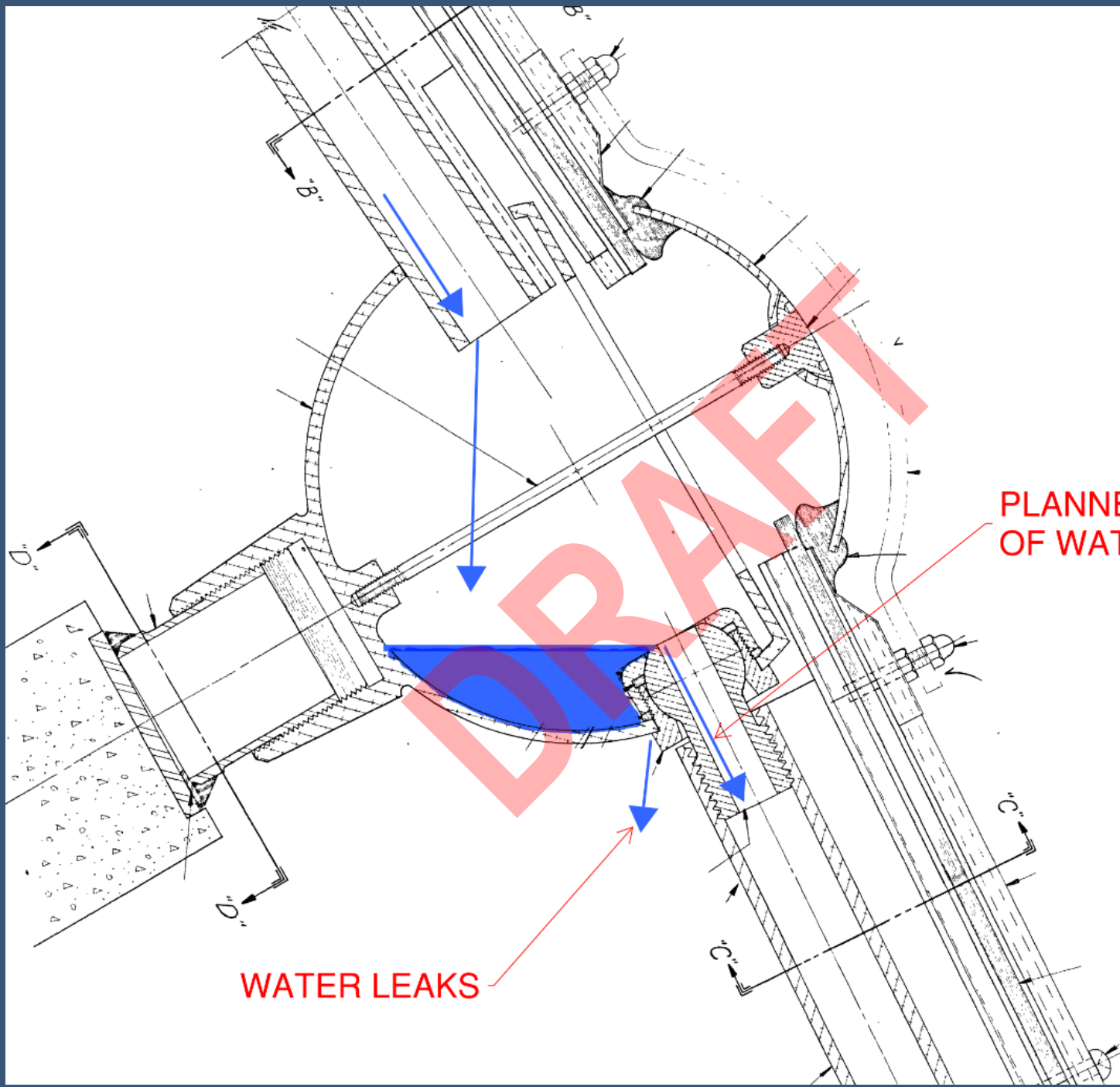
# Current Conditions

---

## Window System Condition

- Cracked panes of glass
- Leaks within window system





PLANNED PATH OF WATER

WATER LEAKS

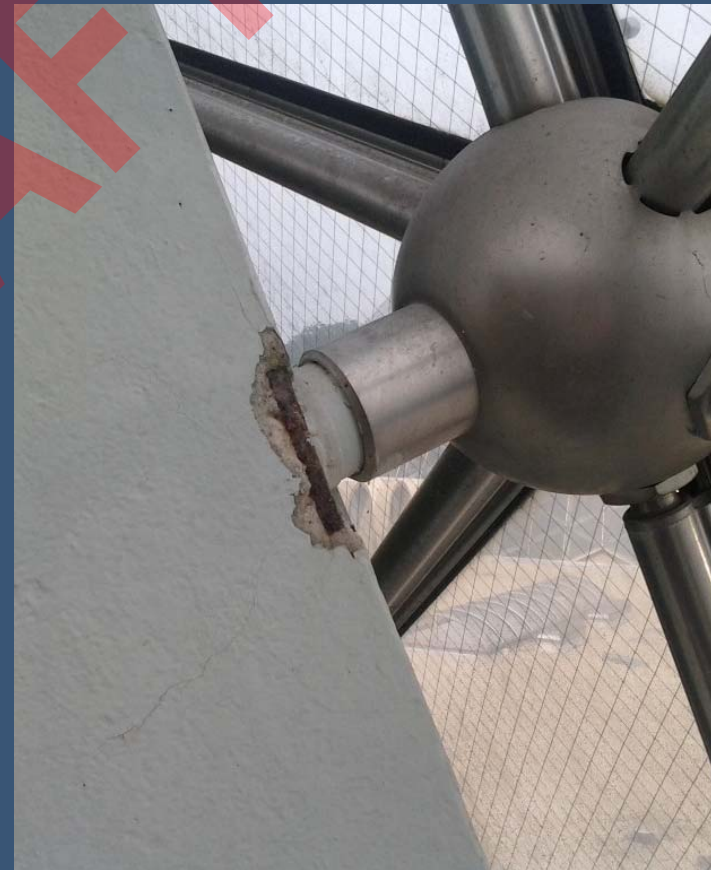


# Current Conditions

---

## Concrete System Condition

- Cracking concrete at edge of embedded plate

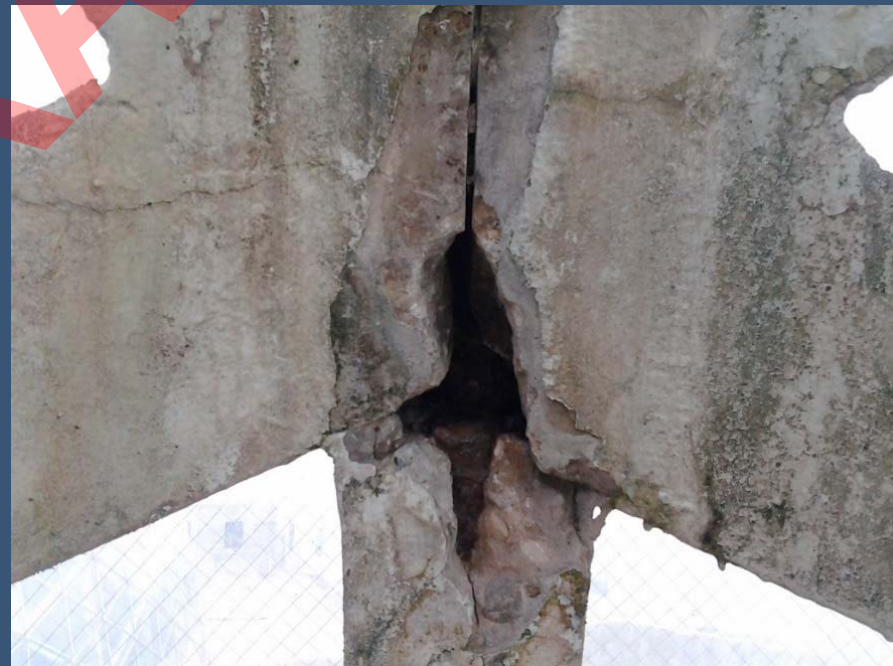


# Current Conditions

---

## Concrete System Condition

- General condition is good at this time, but will deteriorate with continued exposure to water
- Isolated areas of rebar deterioration





# Current Conditions

---

## Access for Inspection and Repair

- Interior – Special lift, requires Dome closure, affects plants
- Exterior – Crane for window pane replacement





---

# 2016 Update on Costs and Options for Domes

# 2016 Update on Costs and Options for Domes

---

## 2008 Cost Study Options

- Replace only damaged glass
- Replace all glass
- Replace all glass – install new aluminum façade
- Install new glass and new self-supporting aluminum façade
- Install new glass and new self-supporting aluminum façade and remove concrete frame

# 2016 Update on Costs and Options for Domes

---

## Previous Studies and Repairs

1965-1992	Minor Repairs and Glass Replacement
1993-1999	Inspection and Repairs
2006-2008	Study and Report
2012-2014	Glass Repairs in Tropical Dome
2013-2014	Inspection and Removal of Loose Concrete
2015-2016	Inspection and Installation of Mesh

# 2016 Update on Costs and Options for Domes

---

## Changes since 2008

- Physical
- Horticultural
- Lessons Learned
- Market Changes
- Changes in Scope of Project



# 2016 Update on Costs and Options for Domes

---

## Physical Changes *(since 2008)*

- Continued leakage causes rusting of embedded plates
- Rusting plates cause cracking of concrete
- Leakage threatens reinforcing in the concrete ribs
- 1,150 out of over 9500 panes of glass have been replaced
- Minor shifting of aluminum framework
- Stainless steel mesh installed in 2016

# 2016 Update on Costs and Options for Domes

---

## Horticultural Changes *(since 2008)*

- Leaking has impacted plant layout and plant health
- Temperature control is difficult and affects plant health
- Some plants are rare, difficult to move or replace
- New greenhouse provides an opportunity to store plants

# 2016 Update on Costs and Options for Domes

---

## Lessons Learned *(since 2008)*

- Access to exterior surfaces improved with customized work platforms
- Access to interior surfaces improved with new articulated lift
- Cost of access more defined
- Shifting aluminum framework
- Brittleness of wire glass

# 2016 Update on Costs and Options for Domes

---

## Market Changes *(since 2008)*

- Inflation of construction costs
- Revised budgetary estimates from suppliers
- Local / regional competition
- Economic climate has improved



# 2016 Update on Costs and Options for Domes

---

## Changes in Scope of Project

- Code compliance
- ADA upgrades
- Variable project contingency
- Project soft costs adjusted to current conditions

# 2016 Update on Costs and Options for Domes

---

## 2016 Cost Update Caveats

- Comparative study – not a project cost or budgetary estimate
- 2019 project construction
- Foundations assumed to be in good condition
- Operating costs may vary substantially
- Horticultural impacts may vary
- Revenue and revenue flexibility will vary
- All options to meet code and ADA requirements

# 2016 Update on Costs and Options for Domes

---

## Option R

- Complete replacement (in kind) on existing foundation
- New aluminum and glass façade
- Remove concrete frame, replace with new concrete frame
- New mechanical system
- Code / ADA upgrades

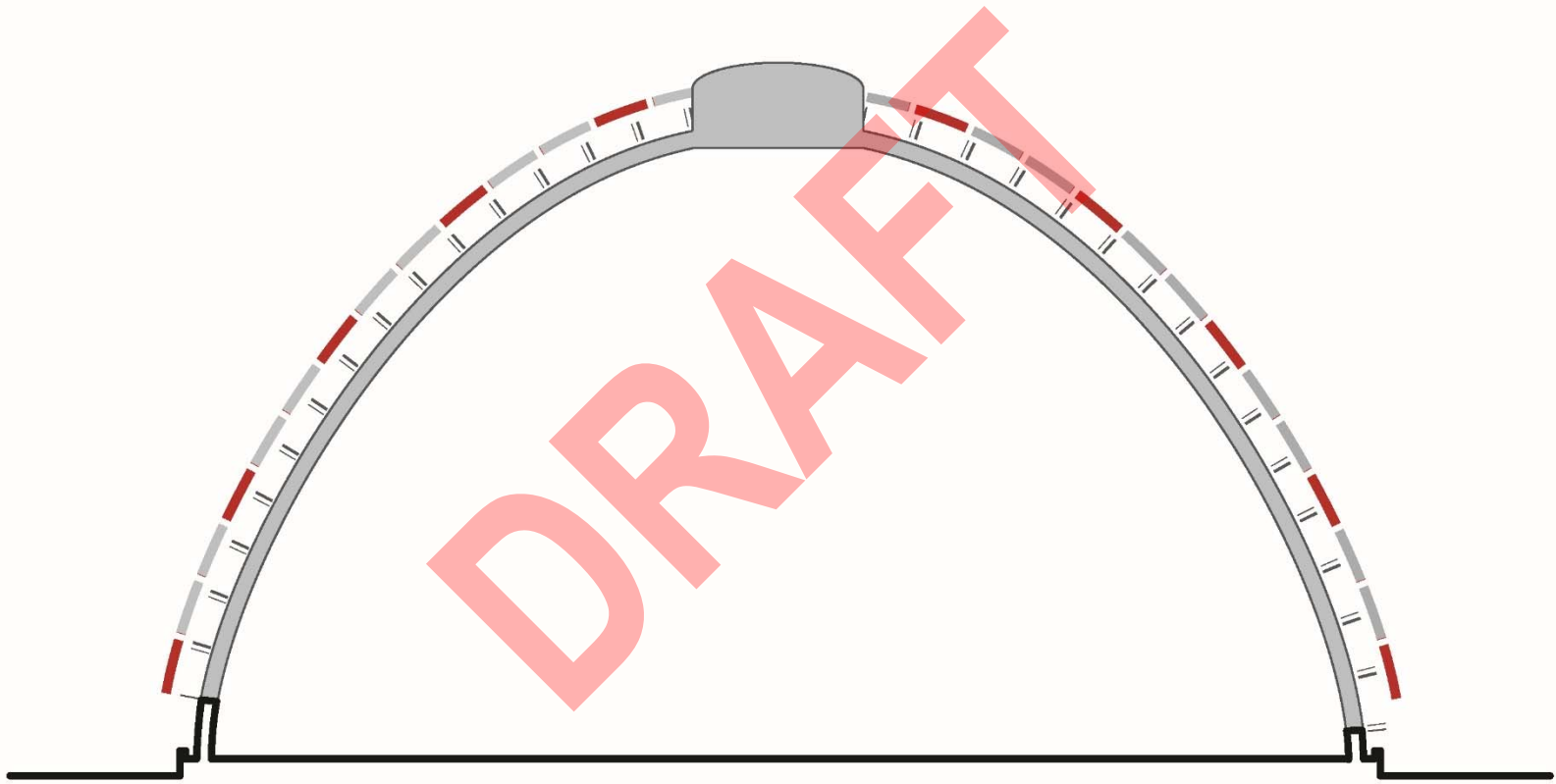
Estimated Cost = \$64 million

Estimated Life = 50 years

Maintenance is Normal for a New Facility

Wire Mesh is Removed

# 2016 Update on Costs and Options for Domes



**Option 1 – Replace Broken Glass**



# 2016 Update on Costs and Options for Domes

---

## Option 1

- Replace only broken glass
- Replace all gaskets for all glass
- Clean, repair, re-coat concrete frame
- Partial replacement of mechanical equipment

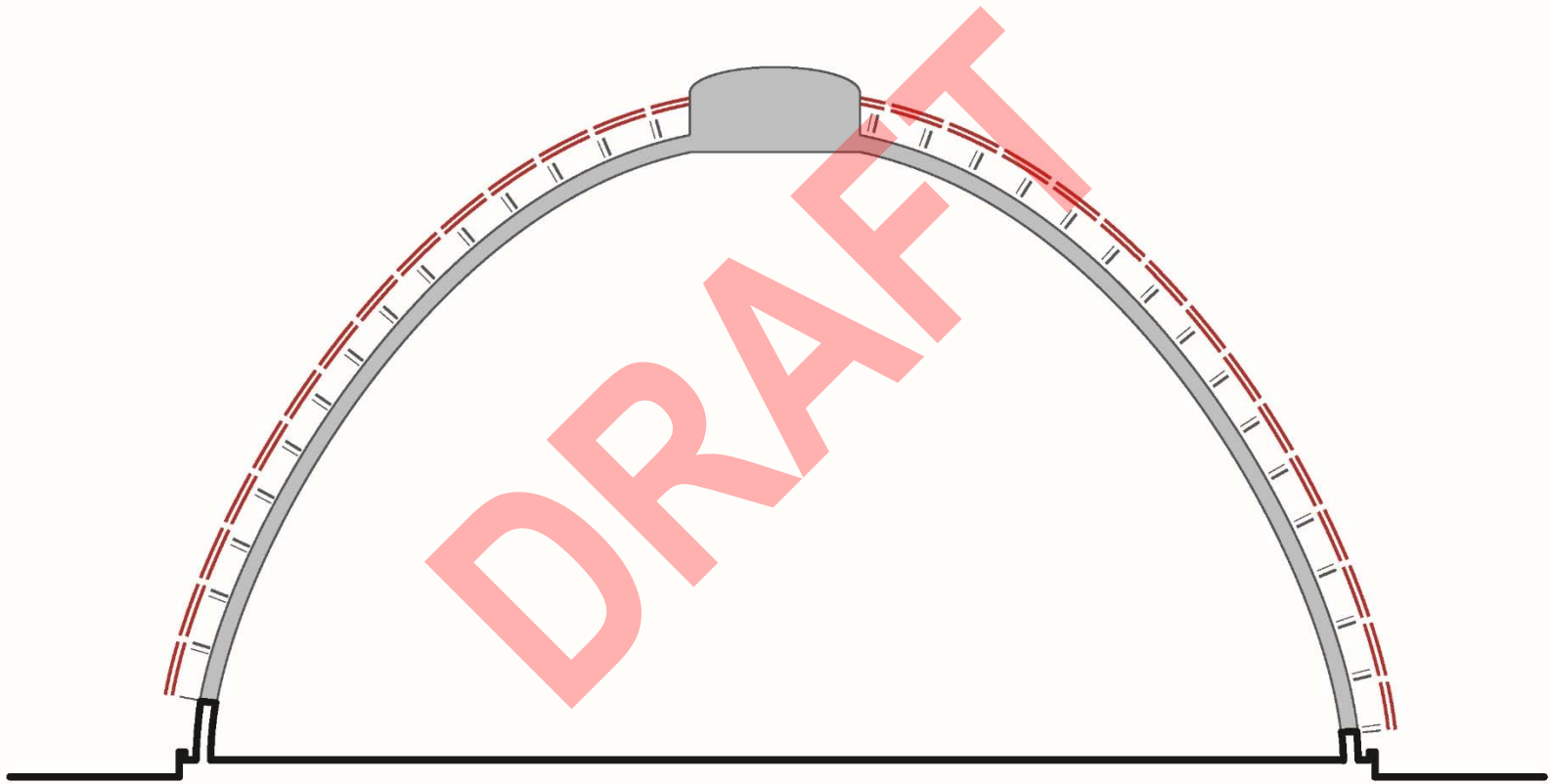
Estimated Cost = \$14 million

Estimated Life = 5-10 years

Very High Level of Maintenance Required

Wire Mesh Remains

# 2016 Update on Costs and Options for Domes



**Option 2 – Replace All Glass**

# 2016 Update on Costs and Options for Domes

---

## Option 2

- Replace all glass with insulated glass
- Replace all gaskets for all glass
- Clean, repair, re-coat concrete frame
- Partial replacement of mechanical equipment

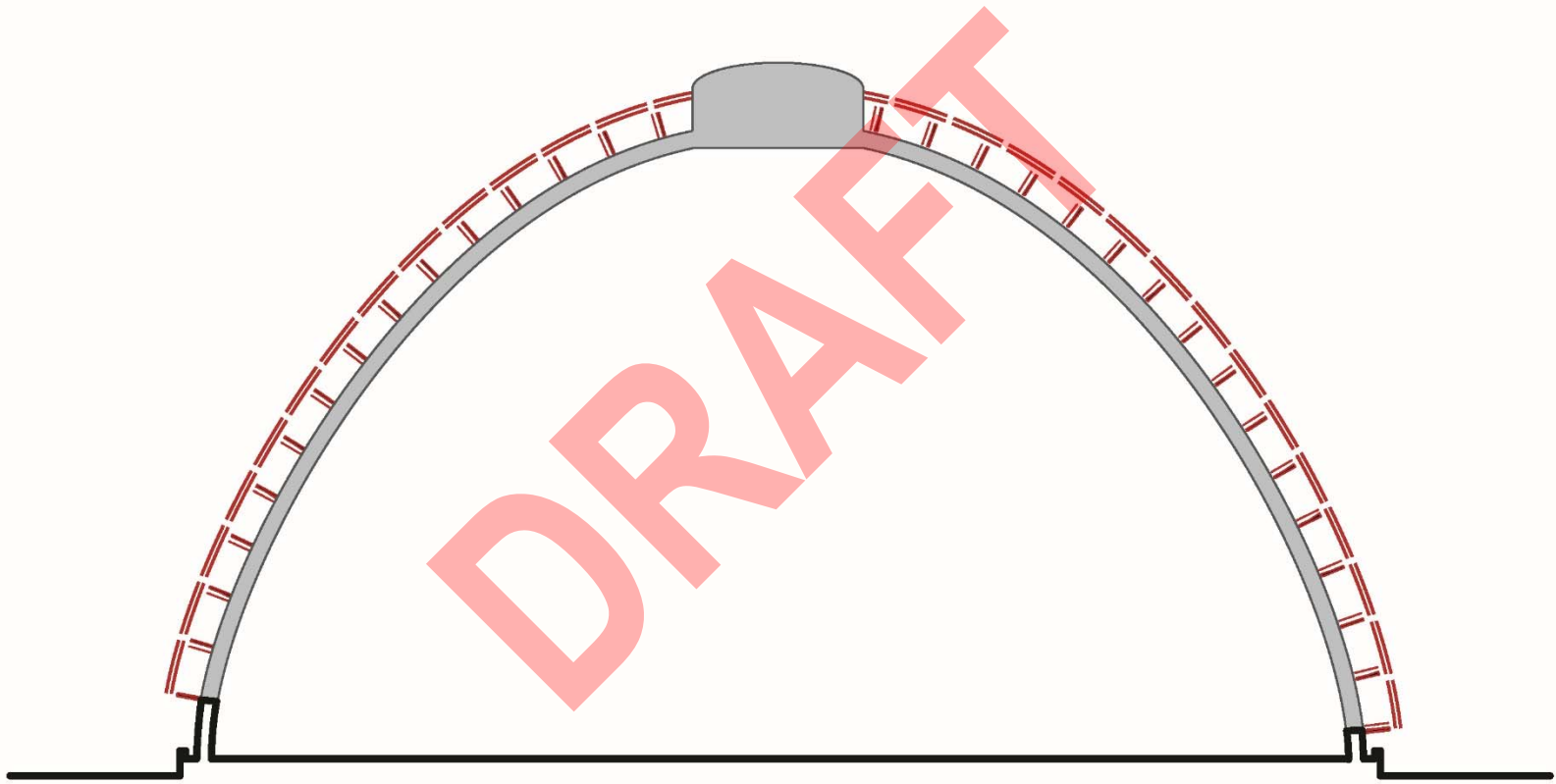
Estimated Cost = \$38 million

Estimated Life = 15-20 years

High Level of Maintenance Required

Wire Mesh Remains

# 2016 Update on Costs and Options for Domes



Option 3 – New Façade

# 2016 Update on Costs and Options for Domes

---

## Option 3

- Replace all glass with insulated glass
- Complete replacement of aluminum framework
- Clean, repair, re-coat concrete frame
- Partial replacement of mechanical equipment

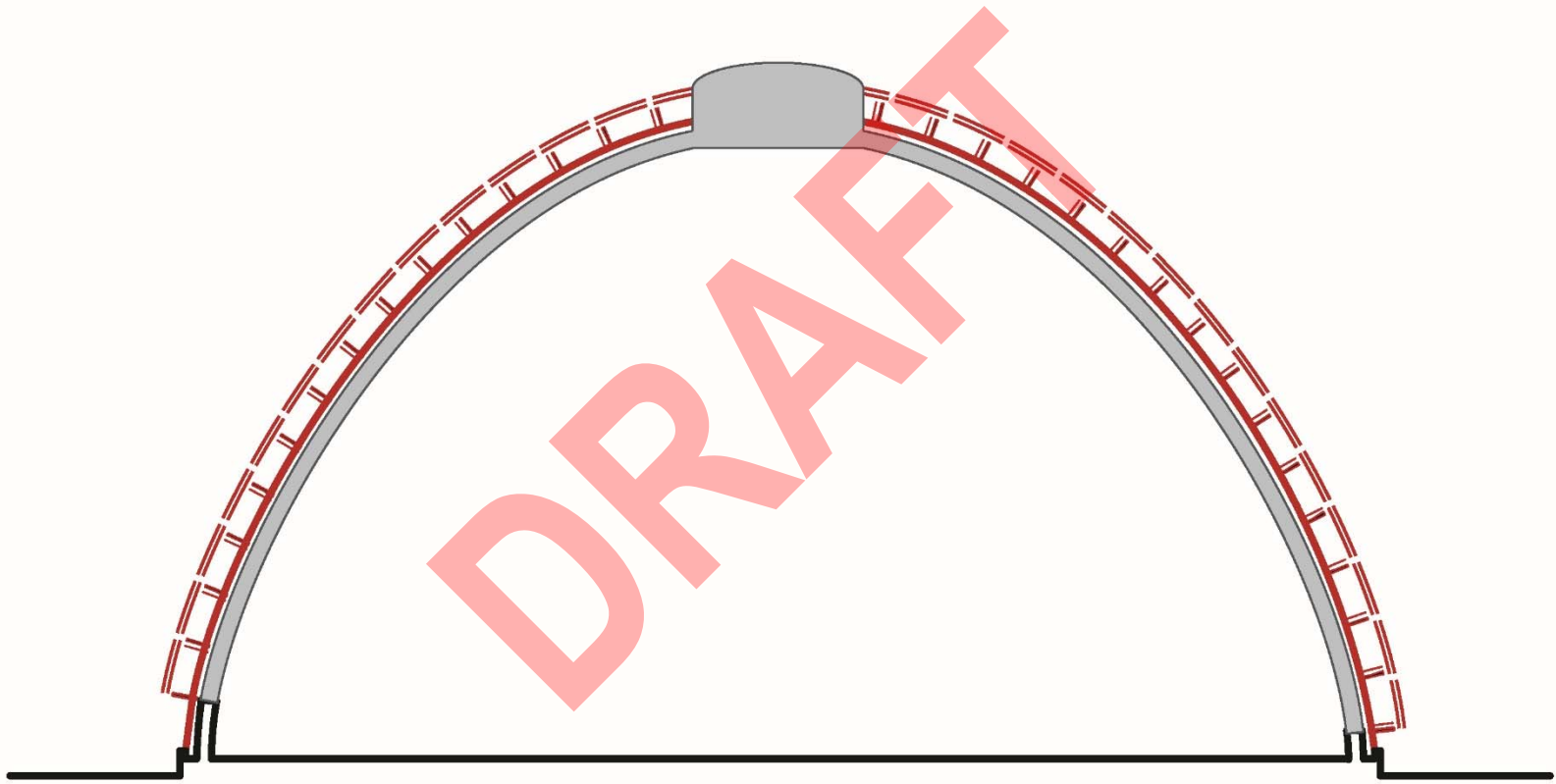
Estimated Cost = \$47 million

Estimated Life = 25-30 years

High Level of Maintenance Required

Wire Mesh Remains

# 2016 Update on Costs and Options for Domes



Option 4 – New Self-Supporting Façade

# 2016 Update on Costs and Options for Domes

---

## Option 4

- Replace all glass with insulated glass
- Complete replacement of façade with new self-supporting aluminum framework
- Clean, repair, re-coat concrete frame
- Partial replacement of mechanical equipment

Estimated Cost = \$54 million

Estimated Life = 25-30 years

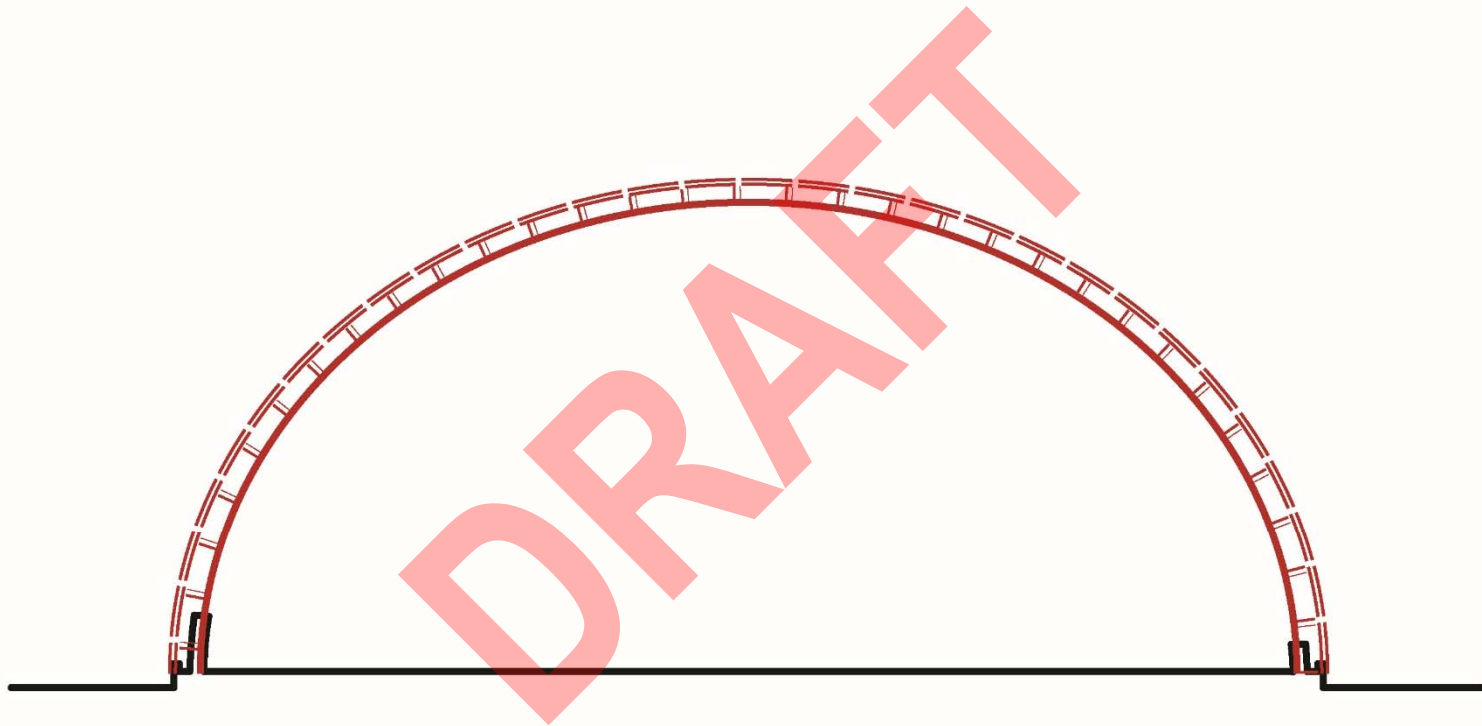
High Level of Maintenance Required

Wire Mesh Remains



# 2016 Update on Costs and Options for Domes

---



**Option 5 – New Self-Supporting Façade and  
Remove Concrete Frame**

# 2016 Update on Costs and Options for Domes

---

## Option 5

- Replace all glass with insulated glass
- Complete replacement of façade with new self-supporting aluminum framework
- New geodesic profile 10-15 ft. lower than current
- Remove concrete frame
- Replace all mechanical equipment

Estimated Cost = \$50 million

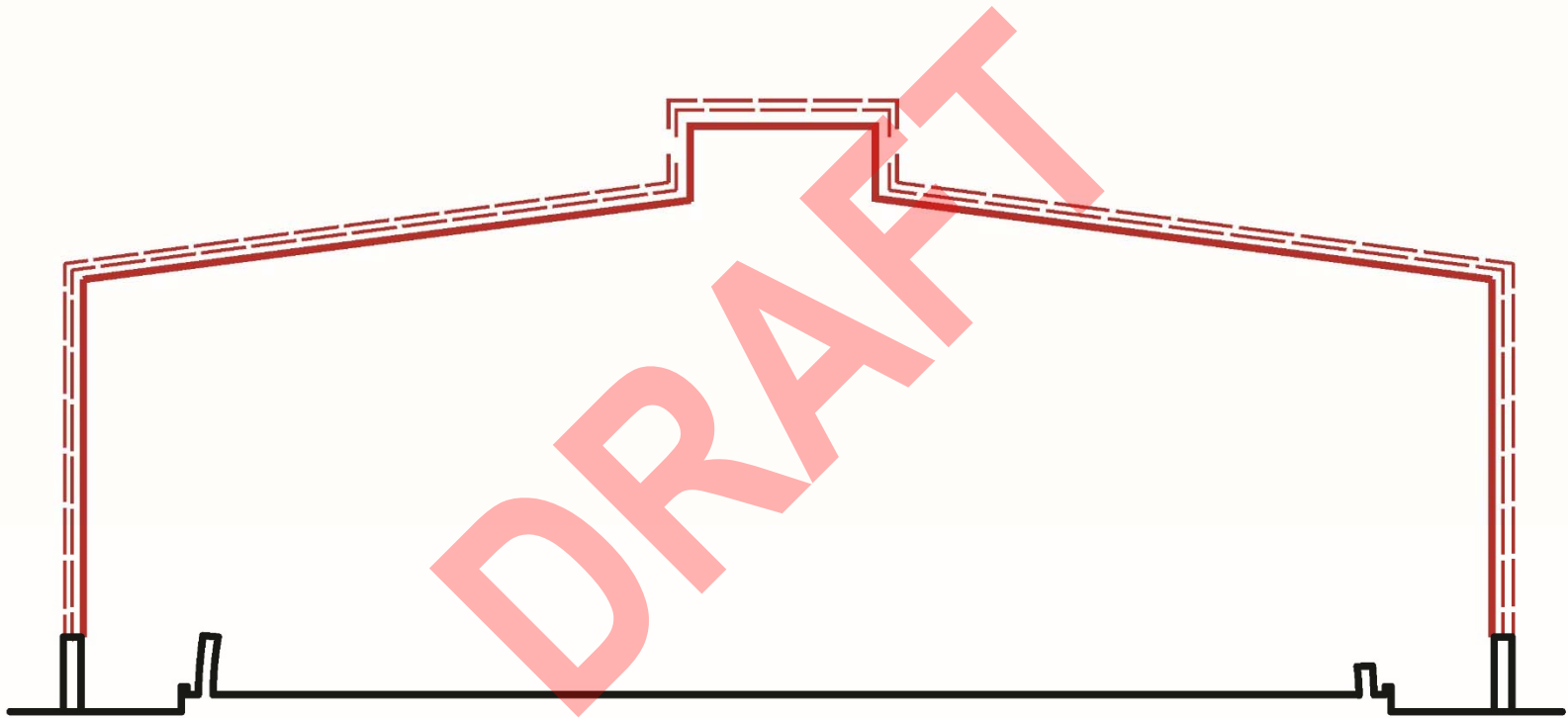
Estimated Life = 50 years

Maintenance is Normal for a New Facility

Wire Mesh is not Necessary

# 2016 Update on Costs and Options for Domes

---



Other Options – New Facility

# 2016 Update on Costs and Options for Domes

---

## Other Options

- General comparative cost only
- Excludes cost of infrastructure
- Demolition of existing domes is included
- Display space assumed to be the same as current
- Support spaces modified to address current shortcomings

Estimated Cost = \$50-\$70 million

Estimated Life = 50 years

Maintenance is Normal for a New Facility

Wire Mesh is not Necessary

# 2016 Update on Costs and Options for Domes

---

## Summary

- Option R – New Façade – Rebuild Concrete Frame = \$64 million
- Option 1 – Replace Broken Glass = \$14 million
- Option 2 – Replace All Glass = \$38 million
- Option 3 – New Façade = \$47 million
- Option 4 – New Self-Supporting Façade = \$54 million
- Option 5 – New Self-Supporting Façade and  
Remove Concrete Frame = \$50 million
- Other Options – New Facility = \$50-\$70 million

# CASE STUDIES

What can we learn from other facilities?

Structure  
& Functionality

Programming  
& Operations

Revenue, Finance,  
& Management

Social & Economic  
Impact

---

DRAFT

# FRAMEWORK OF ISSUES & OPTIONS

## Structure & Functionality

- Historic value
- Type of structures
- Functionality
- Organization
- Size
- Costs
- Integration of uses

## Programming & Operations

- Attendance
- Plant value
- Staff size
- Exhibits
- Shows
- Education
- Track record

## Revenue, Finance, & Management

- Expenses
- Revenue
- Donations
- Fee
- Ownership
- Site control

## Social & Economic Impact

- Community identity
- Community engagement
- Architectural value
- Tourism impact
- Economic benefits



# MITCHELL PARK CONSERVATORY

## Structure & Functionality

- Historic recognition
- 3 “unique” (conoidal) domes
- 46K sf plants
- 100K sf +/- other
- Inflexible layout
- Does not meet codes
- Small non-plant areas
- High costs: repair, maintenance, and renovation
- Inefficient energy systems

## Programming & Operations

- 200-300k attendance
- Limited hours
- Plants @ \$3.2M
- 10 +/- conservatory staff
- Strong potential
  - ✓ *“Friends” group*
  - ✓ *track record*
  - ✓ *education program*
  - ✓ *events program*
- Limited park integration
- No outdoor programs
- Facility shortage

## Revenue, Finance, & Management

- \$1.4M expense
- \$0.8M earned revenue
- Limited donations
- Low fee \$7
- Mission support
- Public ownership
- Dual site management

## Social & Economic Impact

- Community icon
- Limited area impact
- Neighborhood potential
- Attracts visitors
- Minimal direct economic impact

# SELECTED CASE STUDIES

Missouri Botanical Garden (St. Louis, MO)

Phipps Conservatory and Botanical Gardens (Pittsburgh, PA)

Lucile Halsell Conservatory at the San Antonio Botanical Garden (San Antonio, TX)

DRAFT

# MISSOURI BOTANICAL GARDEN

## St. Louis



# MISSOURI BOTANICAL GARDEN – St. Louis

## Structure & Functionality

- Geodesic dome 1960
- 23K sf; 79 acres
- 380K sf of exhibitions, research, and offices
- Attend: 1.04M
- Victorian District & Grove House 1849
- Founded in 1859
- National Historic Landmark;
- National Register of Historic Places

## Programming & Operations

- Teacher development
- Therapeutic horticulture
- Master gardeners
- Community gardening
- Center for Conservation & Sustainable Development
- Cafés
- 435 staff

## Revenue, Finance, & Management

- Exp: \$43M
- Rev: \$45M
- Net Rev: \$2.6M
- Zoon & Museum District provide tax-based revenue
- Corporate sponsors with naming rights
- Donations: \$8M
- Not-for-profit trust
- independent of local gov't

## Impact

- Historical structures
- Community outreach and education
- Benefits from larger tax district
- Public-private partnerships



# PHIPPS CONSERVATORY & BOTANICAL GARDENS

## Pittsburgh



# PHIPPS CONSERVATORY & BOTANICAL GARDENS

## Pittsburgh

### Structure & Functionality

- Original Victorian-style conservatory built in 1893 (43.5K sf)
- Additional 229K sf: Welcome Center, Production Greenhouse, Tropical Conservatory, Lecture Hall, & special education spaces
- Founded in 1893

### Programming & Operations

- Monthly programming and specialty shows
- Art collections, certificate classes, seasonal camps, internships
- Teacher Advisory Committee
- Homegrown healthy food initiative
- Phipps Research Institute for Biophilia and Science Engagement
- Café

### Revenue, Finance, & Management

- Exp: \$9.5M; Rev: \$10.1M
- Net Rev: \$642K
- Grants & donations: \$6.5M
- Program revenues: \$2.3M
- Non-profit organization manages ongoing operations
- Park, facility, & collections owned by City
- 199 staff
- National Register of Historic Places; local

### historic designation

- #### Social & Economic Impact
- Historical, classic conservatory structure
  - Neighborhood outreach and involvement
  - Ongoing research



# LUCILE HALSELL CONSERVATORY – San Antonio





# LUCILE HALSELL CONSERVATORY – San Antonio

## Structure & Functionality

- Conservatory located within San Antonio Botanical Garden
- Opened in 1988
- Features five rooms and pavilions with 40K sf of space
- Additional facilities supplemented by Daniel J. Sullivan Carriage House (dated to 1896)

## Programming & Operations

- Exhibitions and special programming
- Classes: flower arranging, photography, rainwater harvesting, waterwise gardening
- Children's Vegetable Garden Program, Nature Camp, Animal Botanical Classes
- WaterSaver Garden and Lane

## Revenue, Finance, & Management

- Exp: \$1.2M; Rev: \$5.1M
- Net Rev: \$3.4M
- Program Revenues: \$769K
- Non-profit organization manages ongoing operations
- 39 acres
- 31 staff, 1,000 volunteers

## Social & Economic Impact

- Linkages to larger botanical gardens
- Unique architecture
- Sustainability initiatives
- Large volunteer base

# MITCHELL PARK CONSERVATORY

## Structure & Functionality

- Historic recognition
- 3 “unique” (conoidal) domes
- 46K sf plants
- 100K sf +/- other
- Inflexible layout
- Does not meet codes
- Small non-plant areas
- High costs: repair, maintenance, and renovation
- Inefficient energy systems

## Programming & Operations

- 200-300k attendance
- Limited hours
- Plants @ \$3.2M
- 10 +/- conservatory staff
- Strong potential
  - ✓ *“Friends” group*
  - ✓ *track record*
  - ✓ *education program*
  - ✓ *events program*
- Limited park integration
- No outdoor programs
- Facility shortage

## Revenue, Finance, & Management

- \$1.4M expense
- \$0.8M earned revenue
- Limited donations
- Low fee \$7
- Mission support
- Public ownership
- Dual site management

## Social & Economic Impact

- Community icon
- Limited area impact
- Neighborhood potential
- Attracts visitors
- Minimal direct economic impact

# CASE STUDY TAKEAWAYS: “Compared to the Domes...”

## Structure & Functionality

- Integrated with botanical gardens
- One admission to view all gardens
- Promotion of historic structures

## Programming & Operations

- Larger operations: staff, programming
- Other revenue sources (cafés, special events, etc.)
- Leverage assets and personnel
- Public-private partnerships
- Operational efficiencies

## Revenue, Finance, & Management

- Operated by private non-profits
- Admission fees and revenue are higher
- Extensive inside and outside gardens
- Full-time fund development staff
- Annual giving and capital campaigns

## Social & Economic Impact

- “Critical mass”
- Integrated programming
- Broad spectrum of revenue sources
- Neighborhood engagement and educational programs

*ALL LONG-TERM PLANNING STRATEGIES SHOULD EMBODY FOUR GOALS:*

**Structure  
& Functionality**

*Apply a process that clearly addresses strengths and weaknesses (including historic value).*

**Programming  
& Operations**

*Find a solution that expands programs, events and associated earned revenue.*

**Revenue, Finance,  
& Management**

*Develop an organizational and financial structure that enhances earned revenue and donations, expands program and staff capacity, and ensures public accountability.*

**Social & Economic  
Impact**

*Create a combined facility that serves as a valued, community-wide cultural asset.*

*Action: Create a contemporary conservatory that becomes a year-round education and entertainment destination....*

# 1. RESTORE ALL DOMES NOW, NEW FACILITY COMES LATER WHEN REVENUE AVAILABLE

## Structure & Functionality

*Preserves or replicates structures and landscape, meets codes, improves functionality*

## Programming & Operations

*Limits programs to current capacity, delays program expansion*

## Revenue, Finance, & Management

*Funding from County is highly limited, limited likelihood of finding major donors*

## Social & Economic Impact

*Maintains status quo at best*

**DRAFT**

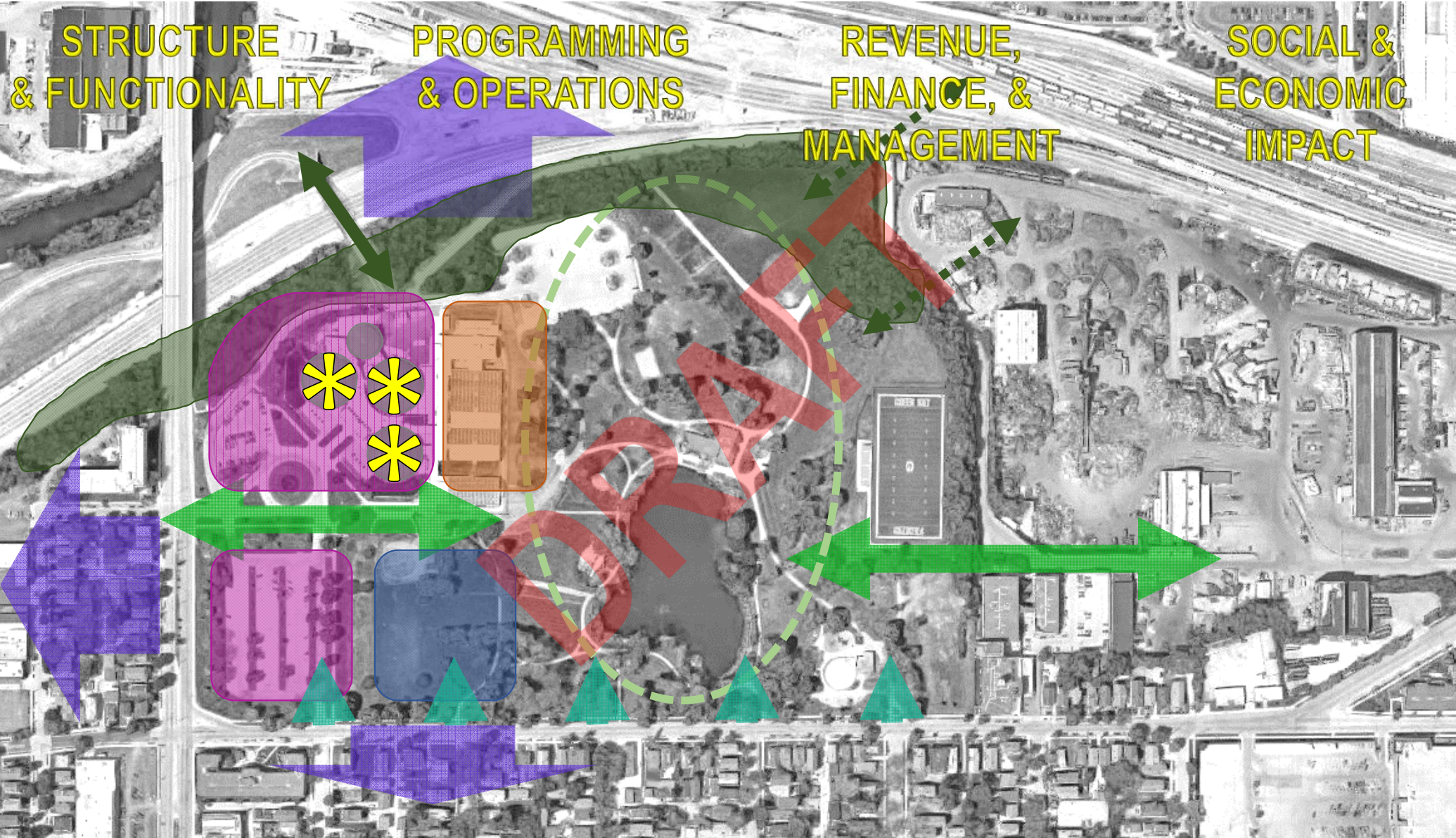


STRUCTURE  
& FUNCTIONALITY

PROGRAMMING  
& OPERATIONS

REVENUE,  
FINANCE, &  
MANAGEMENT

SOCIAL &  
ECONOMIC  
IMPACT



## 2. BUILD NEW FACILITY ON SITE, RESTORE ONE DOME NOW

### Structure & Functionality

### Programming & Operations

### Revenue, Finance, & Management

### Social & Economic Impact

*Long-term continuation  
of 1 dome, 2 others  
have short-term fix*

*Some new additional  
facilities allow for more  
programs and earned  
revenue*

*Front end funding from  
County lessened,  
expanded programs  
engage more donors,  
new private not-for-  
profit entity facilitates  
funding for preservation  
and special projects*

*Starts to increase social  
value of the Domes and  
generates larger  
economic impact*

DRAFT

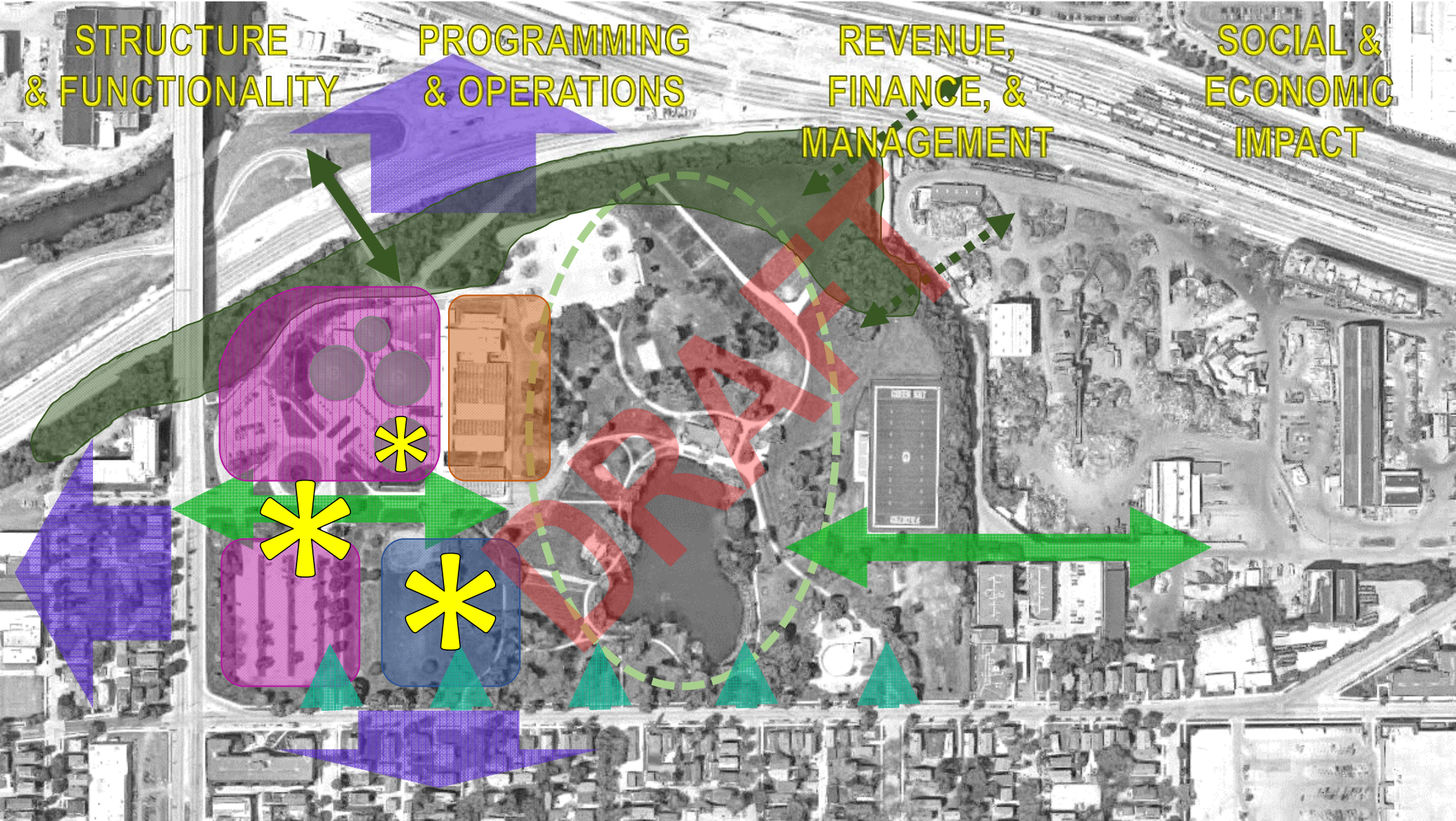


STRUCTURE  
& FUNCTIONALITY

PROGRAMMING  
& OPERATIONS

REVENUE,  
FINANCE, &  
MANAGEMENT

SOCIAL &  
ECONOMIC  
IMPACT



### 3. BUILD NEW FACILITY ON SITE

#### Structure & Functionality

*3 domes get short-term  
fix pending funding*

#### Programming & Operations

*Substantial new  
facilities allow for major  
new programs,  
maximizing earned  
revenue, expanding  
social/economic impact*

#### Revenue, Finance, & Management

*Front end funding from  
County lessened,  
expanded programs  
engage more donors,  
new private not-for-  
profit entity facilitates  
funding for preservation  
and special projects*

#### Social & Economic Impact

*Significant increase in  
social and economic  
value of entire facility*

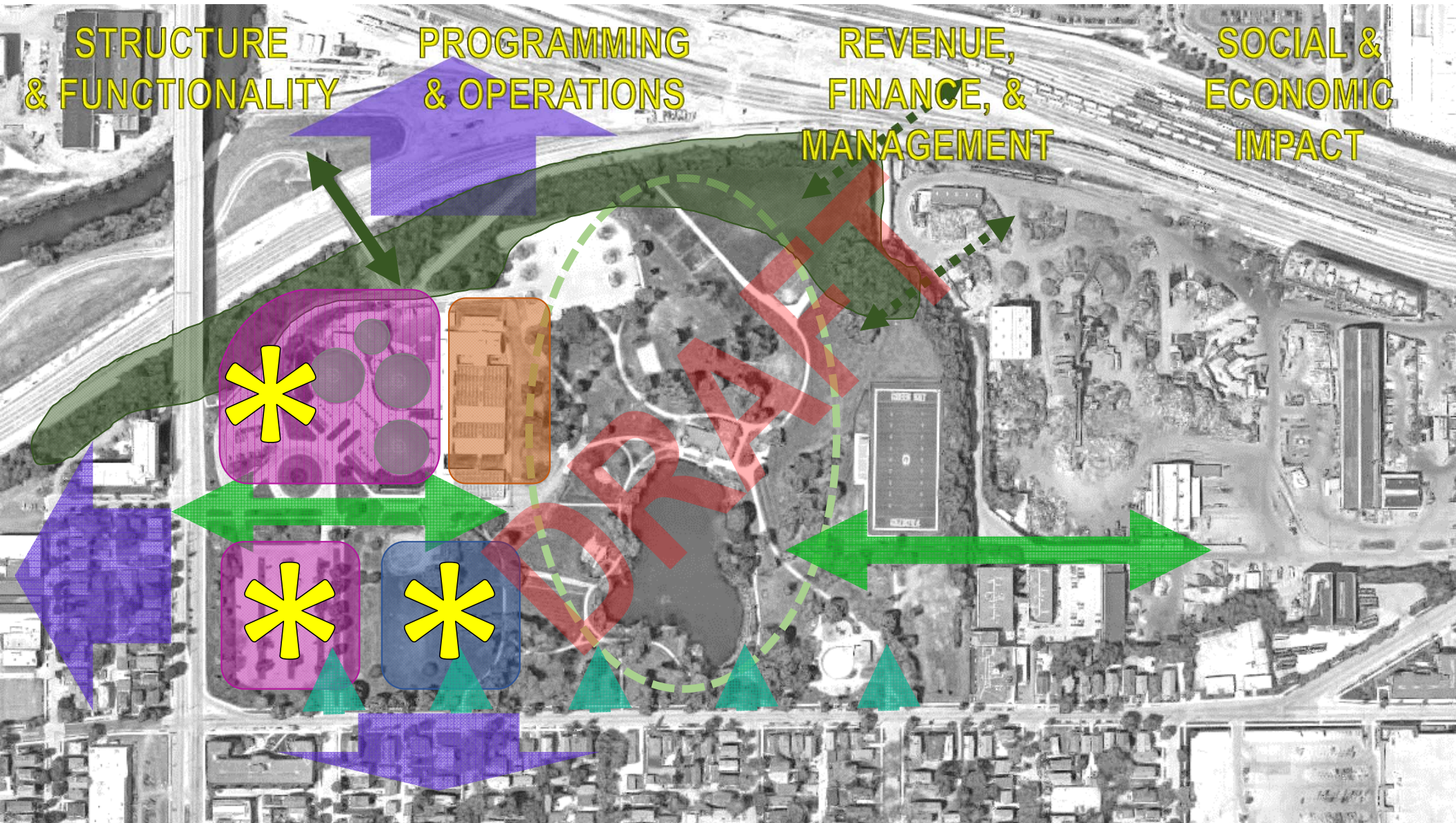


STRUCTURE  
& FUNCTIONALITY

PROGRAMMING  
& OPERATIONS

REVENUE,  
FINANCE, &  
MANAGEMENT

SOCIAL &  
ECONOMIC  
IMPACT



## 4. BUILD NEW FACILITY ON SITE AND WORK ON NEIGHBORHOOD REDEVELOPMENT

### Structure & Functionality

*3 domes get short-term fix pending funding*

### Programming & Operations

*Substantial new facilities allow for major new programs, maximizing earned revenue, expanding social/economic impact, larger park experience engages wider community*

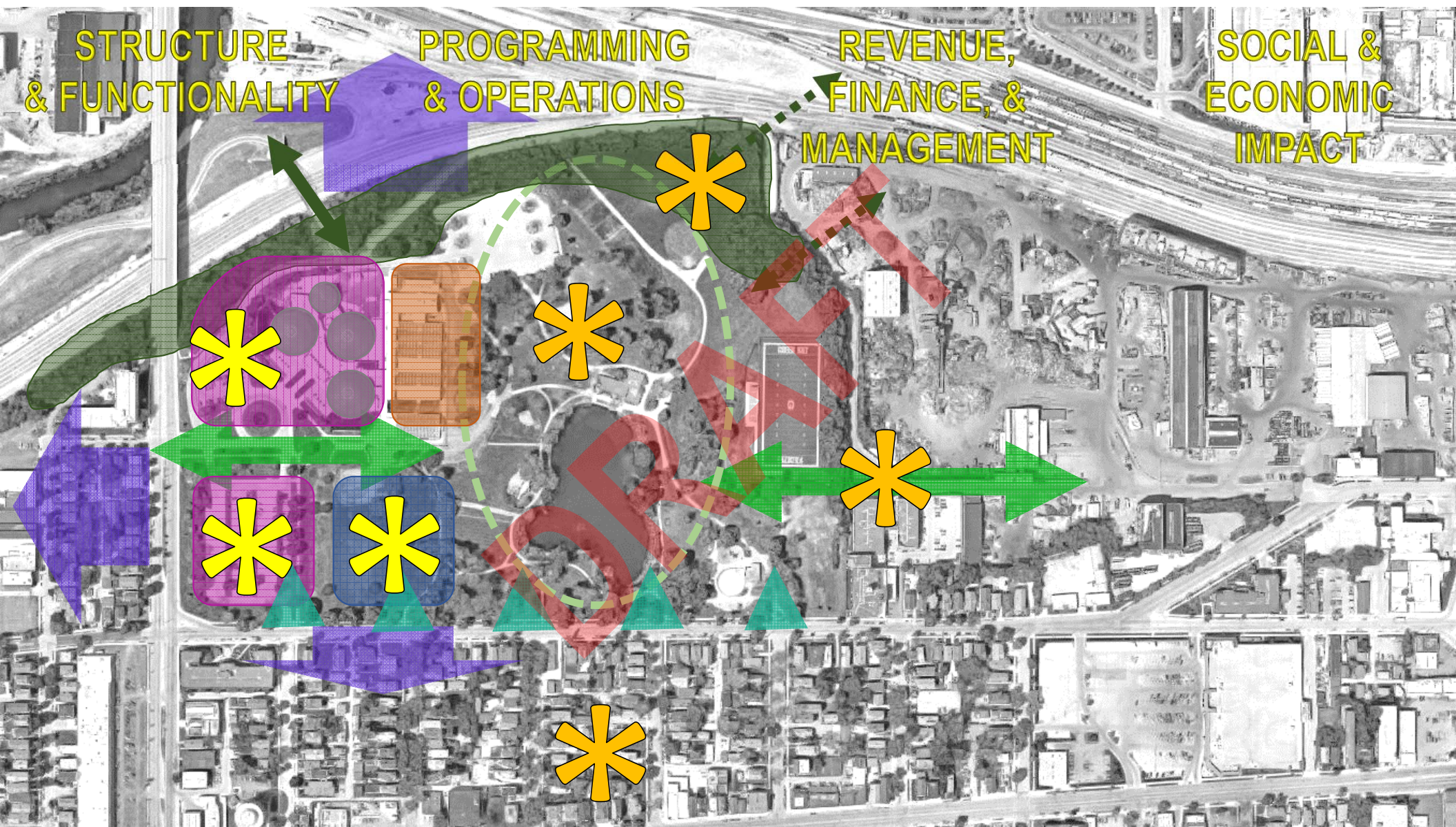
### Revenue, Finance, & Management

*Front end funding from County lessened, expanded programs engage a wider range of donors, new private not-for-profit entity facilitates funding for preservation and special projects, possible TIF subsidy*

### Social & Economic Impact

*Significant increase in social and economic value of entire facility, neighborhood improvement, broader appeal and reputation*





STRUCTURE  
& FUNCTIONALITY

PROGRAMMING  
& OPERATIONS

REVENUE,  
FINANCE, &  
MANAGEMENT

SOCIAL &  
ECONOMIC  
IMPACT



# COMMUNITY ENGAGEMENT WORK TO DATE

- Website: <http://county.milwaukee.gov/Domes>
- Open House at Show Dome Opening (April 30)
- Meetings with Friends of the Domes (May 14 & June 12)
- Public Discussion at NEWaukee Night Market (September 14)
- Community Survey (ongoing since Summer 2016) <http://county.milwaukee.gov/DomesSurvey>

## Upcoming:

- "Meeting in a Box" Presentations by County staff
- Community Open House & Hearing

## Join the Conversation!

Milwaukee County is developing a long-term plan for the Conservatory at Mitchell Park, known as "The Domes," and wants to hear from you. Now that short-term work is underway to safely re-open the Domes, we are soliciting your ideas for the future.

To learn more and to express your ideas:

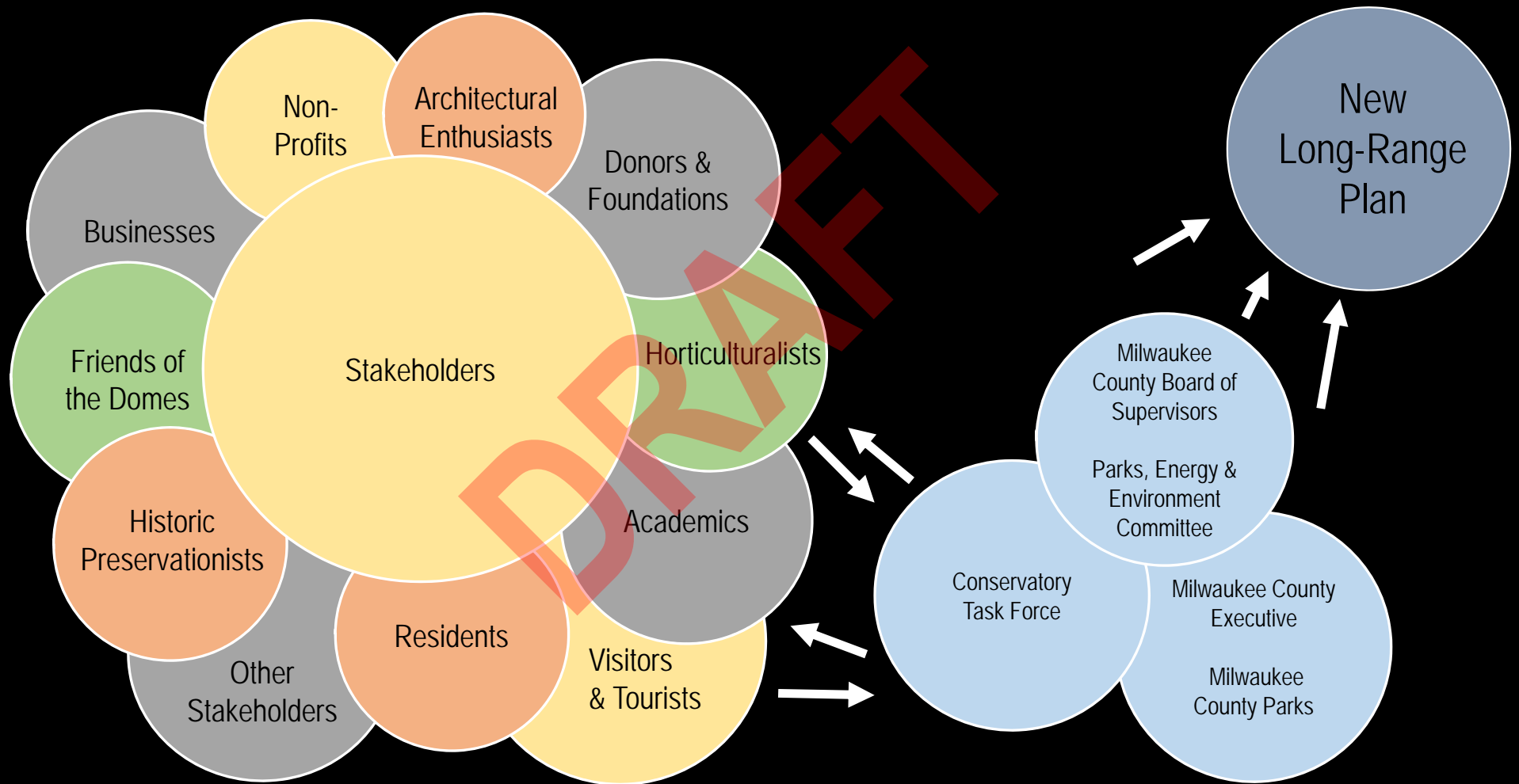
- Complete the online survey at <http://county.milwaukee.gov/DomesSurvey>, or
- Call the Parks Department at (414) 257-PARKS to offer comments or request a paper survey

You can find general updates on the Domes at <http://county.milwaukee.gov/Domes>. We look forward to hearing from you!





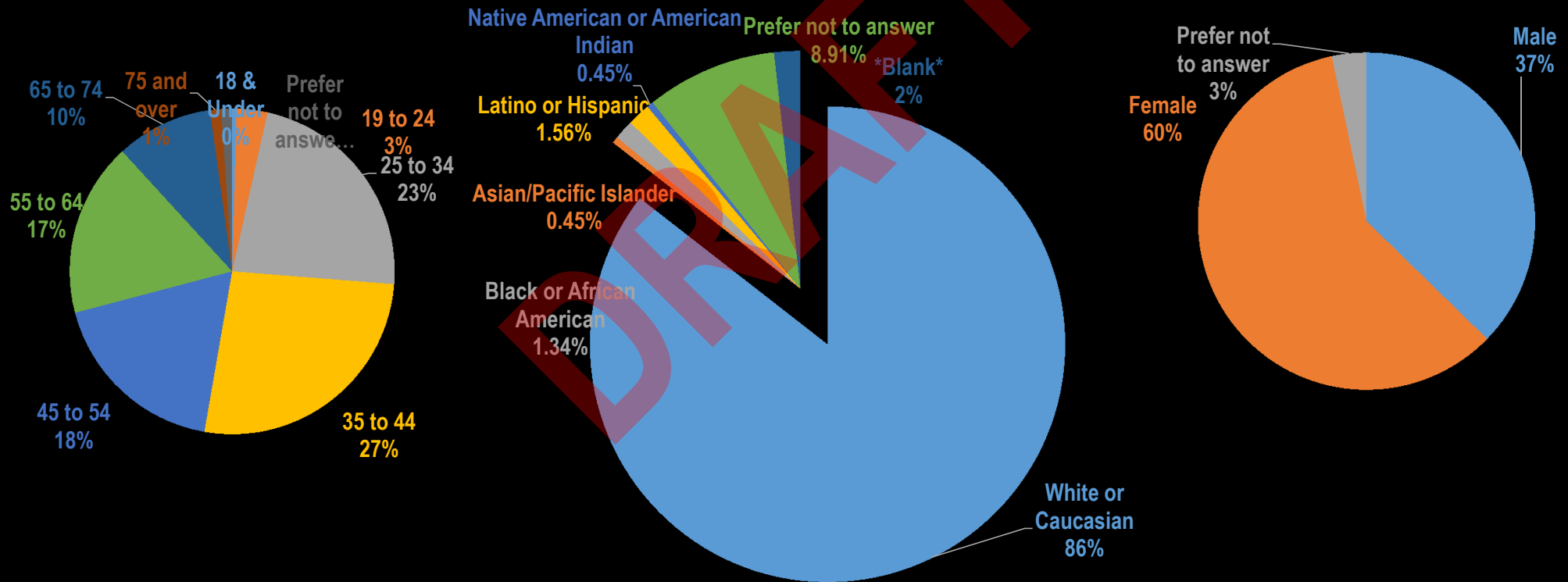
# KEY ELEMENTS OF COMMUNITY ENGAGEMENT



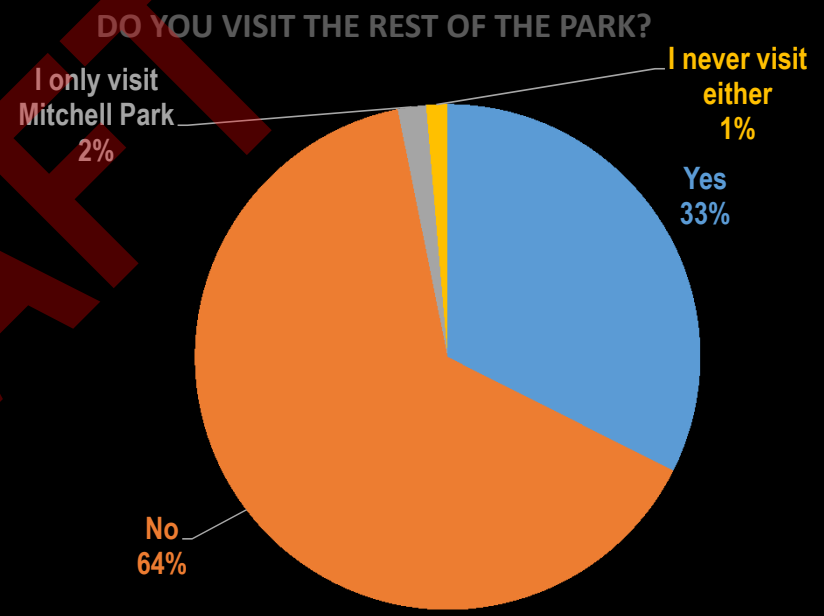
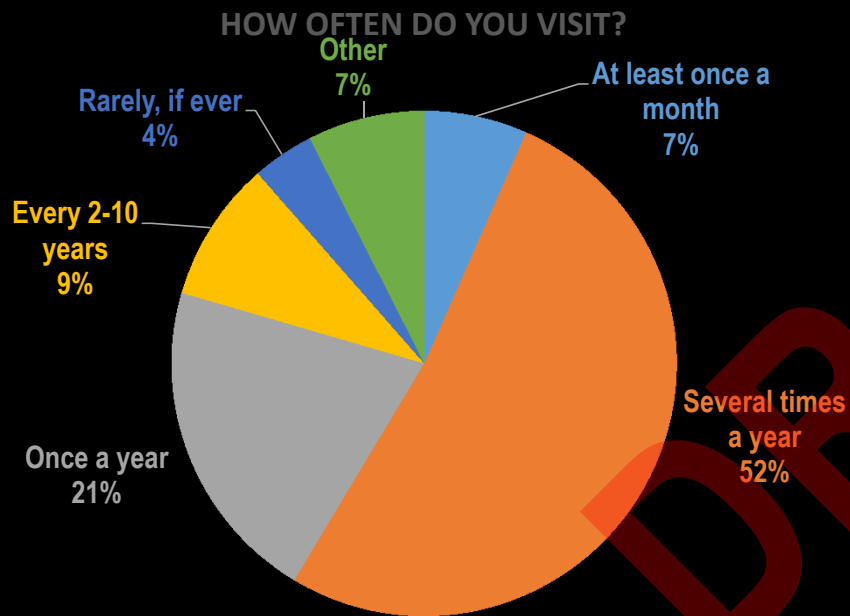
# SHOW DOME OPENING: April 30



# ONLINE SURVEY RESULTS: Demographics of Respondents



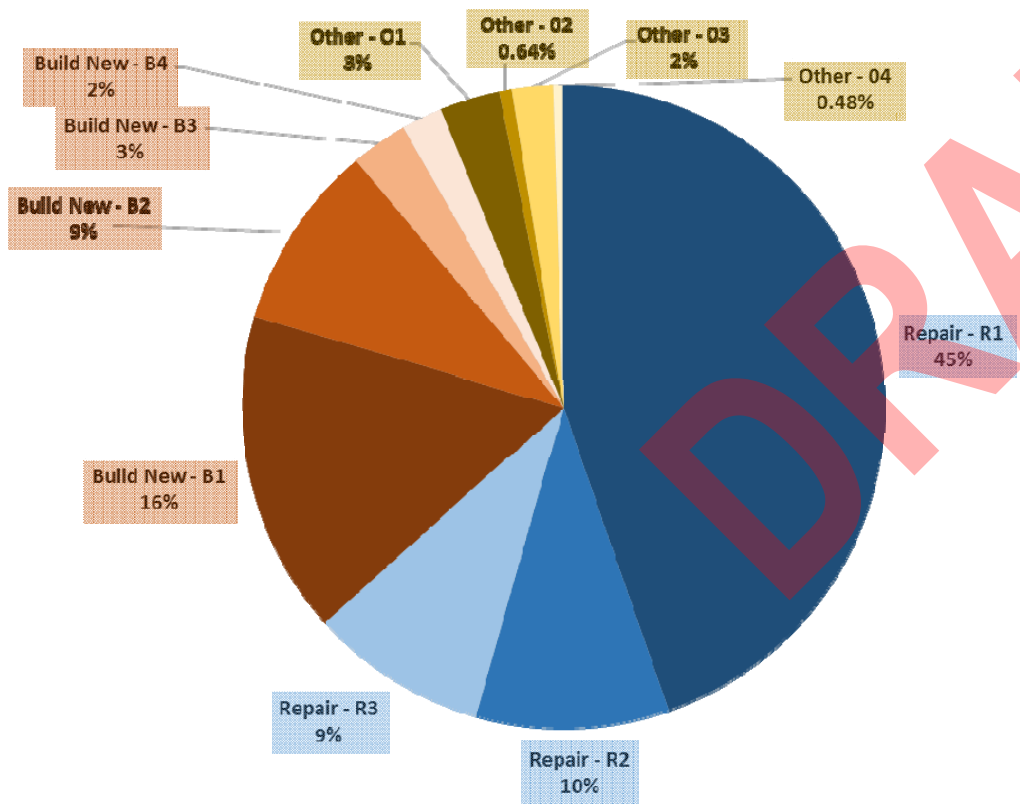
# ONLINE SURVEY RESULTS: SUMMARY



# ONLINE SURVEY RESULTS

Respondents selected their preferred option for the Conservatory:

DOMES SURVEY RESULTS (AS OF 11/2016)



## Survey Options → Cost Options

*Repair Option (R)*

Cost Option 1, 2, 3, 4, 5

*Remove & Build New (B)*

Cost Option R, 6

*Other Remove & Reinvest*

Cost Option 6

# COMMENTS & FEEDBACK

"I love the domes, but if a different glass structure is more practical and easier to maintain, then that sounds viable to me."

"These are my domes don't destroy them."

"The Domes are iconic and a one of a kind cultural amenity that is enjoyed by many."

"...All done with green intentions and energy efficiency."



# COMMENTS & FEEDBACK

"...Maintain, repair, and improve a cultural landmark in the city."

"Sell to a private company and remove the tax burden."

"It is a location that holds meaning to my family."

"...Make it a membership deal to get a little discount for the residents of Milwaukee."

"The domes are unique amongst location and help to define something that is uniquely Milwaukee."

"... A nostalgic sentiment of a limited group"

# ENGAGEMENT: Working Draft of Potential Groups

## Open Houses & Hearings Focus Groups & Listening Circles

### Adjacent Neighborhood Groups

- Clarke Square Neighborhood Initiative / Journey House
- Layton Boulevard West Neighbors
- Silver City District (National Avenue businesses)
- Sixteenth Street Community Health Centers
- Southside Organizing Committee
- 27<sup>th</sup> Street BID
- Walker's Point Youth & Family Center

### Commerce & Tourism

- African American Chamber of Commerce
- Greater Milwaukee Committee
- Hispanic Chamber of Commerce
- Hmong Wisconsin Chamber of Commerce
- Metropolitan Milwaukee Association of Commerce
- Potawatomi Casino
- Public Policy Forum
- Rotary Club
- Visit Milwaukee

**Who else should we include?**

**Can Task Force members help sponsor these?**

# ENGAGEMENT: Potential Groups

## Education & Youth

- Journey House
- Milwaukee Public Schools
- Urban Ecology Center
- Green Schools Consortium of Milwaukee
- Kids, teachers, parents

## General Community & Civic Groups

- Neighborhood Leadership Institute
- Neighborhoods funded by:
  - Greater Milwaukee Foundation
  - Zilber Family Foundation
  - Northwestern Mutual Foundation
- NEWaukee
- Milwaukee County Board
- City of Milwaukee Alders
- City of Milwaukee Department of City Development

**Who else should we include?**

**Can Task Force members help sponsor these?**

# ENGAGEMENT: Potential Groups

## Health

- Aurora Health Care
- Froedtert & the Medical College
- Sixteenth Street Community Health Centers
- Wheaton Franciscan Healthcare

## Historic Preservation

- Historic Milwaukee, Inc.
- Milwaukee County Historical Society
- Milwaukee Preservation Alliance
- Wisconsin Historical Society

## Park & Horticultural Groups

- Friends of the Domes
- MATC
- UW-Extension Master Gardeners
- Preserve Our Parks
- Park People
- Rotary Club Environment & Ecology Committee

**Who else should we include?**

**Can Task Force members help sponsor these?**

# NEXT STEPS

1. GRAEF:  
Complete report on case studies and recommendations. Submit report to Park Staff, Task Force, and Parks Committee.
2. Task Force and Milwaukee County:  
Conduct final round of civic engagement using "Meeting in a Box." Speak to general public, key user groups, and support groups.
3. Task Force and Milwaukee County:  
Based on reports and public input, recommend next steps for each part of the proposed framework:
  - Structure & Functionality
  - Programming & Operations
  - Revenue, Finance, & Management
  - Social & Economic Impact

#### 4. Milwaukee County:

Based on reports, civic input, Task Force, and additional knowledge, draft an initial operations and revenue plan for future action. This may include actions such as:

- Consultation with American Public Gardens Association (APGA) and other experts: historic structures, programming, fundraising, financing, and social and economic impact
- Attendance at conference on fundraising for public gardens (February)
- Facilitating discussions with local donors, foundations, and cultural facilities' leaders
- Site evaluation and infrastructure cost estimates
- Consideration of neighborhood potential
- Write a program statement with plan for: operations, earned revenue and financing, organizational control and management, life cycle costing, and infrastructure analysis and needs

#### 5. Milwaukee County:

Design the "design process" including a Request for Qualifications (RFQ), Request for Proposals (RFP), Charrette, Competition

- Propose a project timeline, budget, and selection process for consultant(s)
- Review with key stakeholders
- Seek approval from Parks Committee, County Board, and County Executive