



MMSD Conservation Easement at McKinley

May 21, 2025



Request:

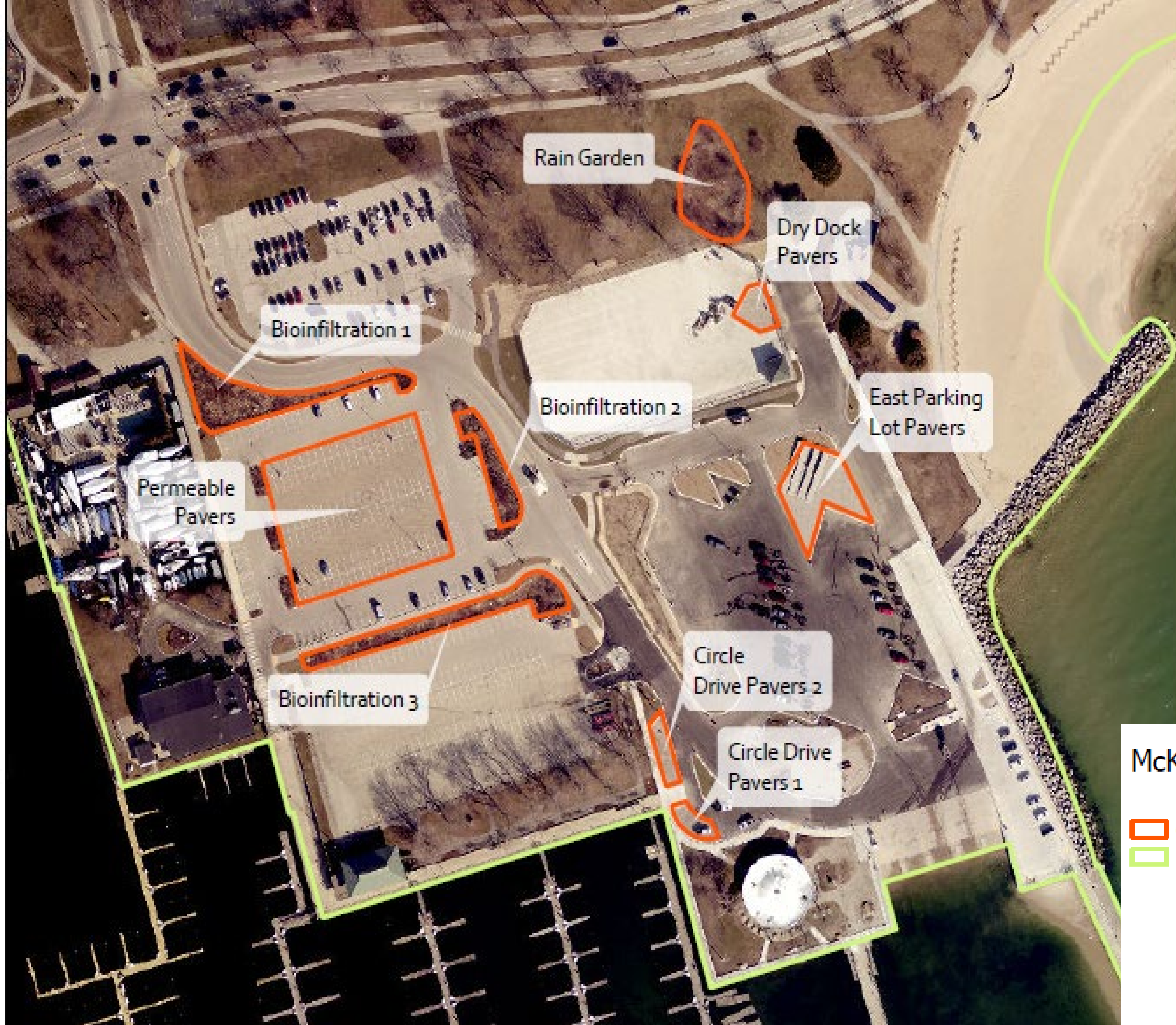
Parks is requesting authorization to grant a 20-year conservation easement to the Milwaukee Metropolitan Sewerage District for the grant-funded green infrastructure project located at McKinley Marina, just north of downtown on the lakefront.

Background:


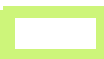
- In March 2021, in File No. 20-250, Milwaukee County Parks requested and was granted authorization by the Milwaukee County Board of Supervisors to enter into certain agreements with Milwaukee Metropolitan Sewerage District (“MMSD”) for grant funding applicable to green infrastructure (“GI”) elements of a capital project at McKinley Marina.
- MMSD awarded the grant to Milwaukee County Parks because the McKinley Marina, which is located along the Lake Michigan shoreline just north of downtown Milwaukee falls within the service area boundary of Milwaukee Metropolitan Sewerage District (MMSD) in addition to the Milwaukee Estuary Area of Concern (AOC). The McKinley Marina north parking lot had not been replaced since 1987 and was in very poor condition for some time, not serving public use needs, and with minimal stormwater management capabilities.
- The project included replacing the parking lot to improve internal circulation and parking lot infrastructure, new LED lighting, a new fish cleaning station, boat launch improvements, new boat storage area, new storm drainage system and improving nearshore water quality utilizing green infrastructure and storm water best management practices.
- The GI project included installation of 3,500 square feet of native landscaping; 9,790 square feet of porous pavement; 24 trees; and 7,280 square feet of bioswale, providing a detention capacity of 85,430 gallons.
- As part of the grant requirements, MMSD requires that the green infrastructure be protected and maintained by the County and that the County grant a limited conservation easement in favor of MMSD.

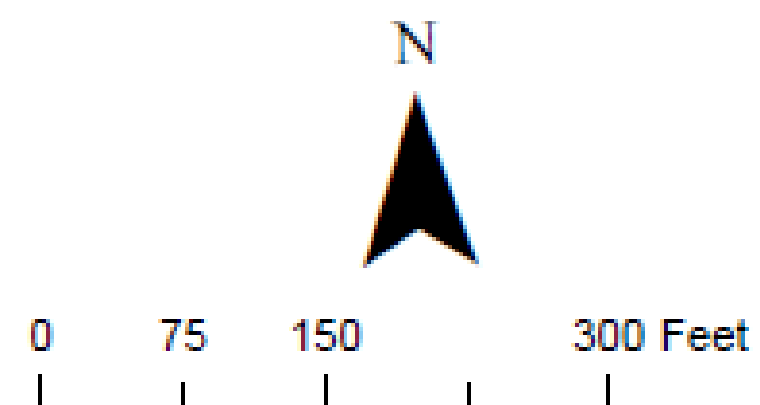
Terms:

- Twenty -year limited-term conservation easement to keep, preserve, and maintain the green infrastructure.
- The County is solely responsible for the operation, maintenance, and evaluation of performance.
- MMSD has the right to enter the property to inspect and monitor for compliance.
- MMSD has the right to prevent any inconsistent uses.



McKinley Park MMSD Green Infrastructure

-  Green Infrastructure
-  Park Boundary



Questions?



Thank You!

