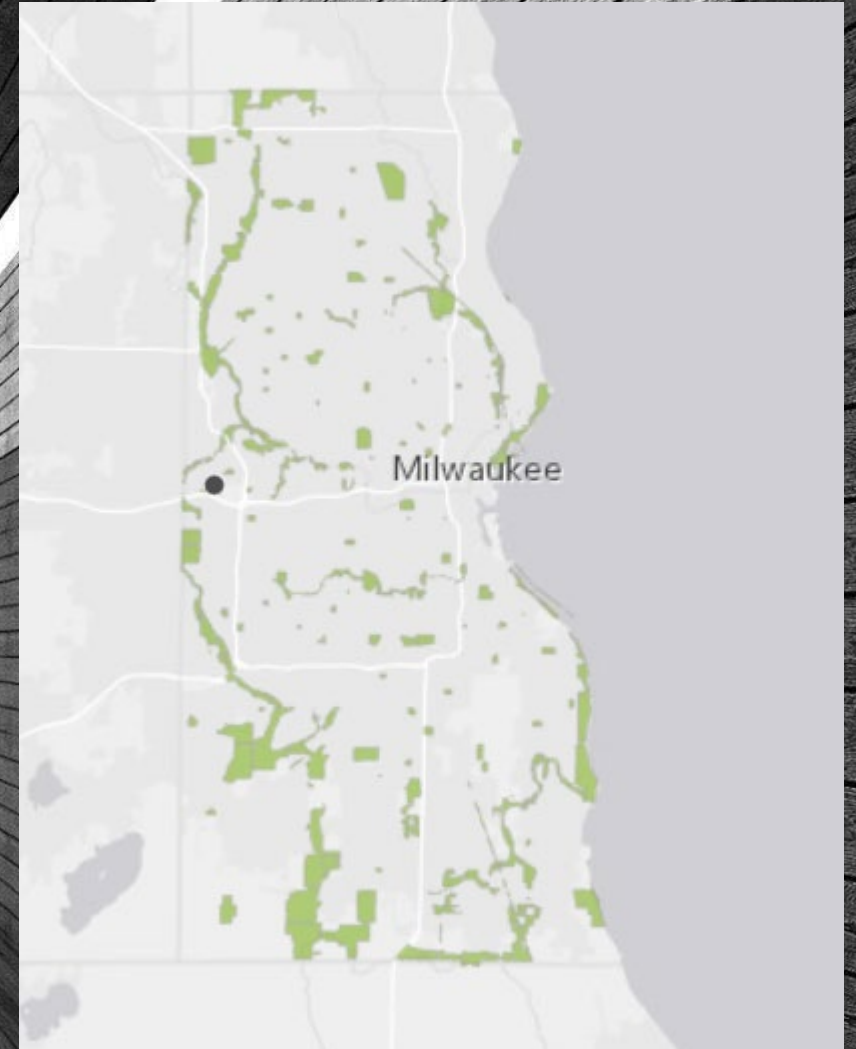


Milwaukee County

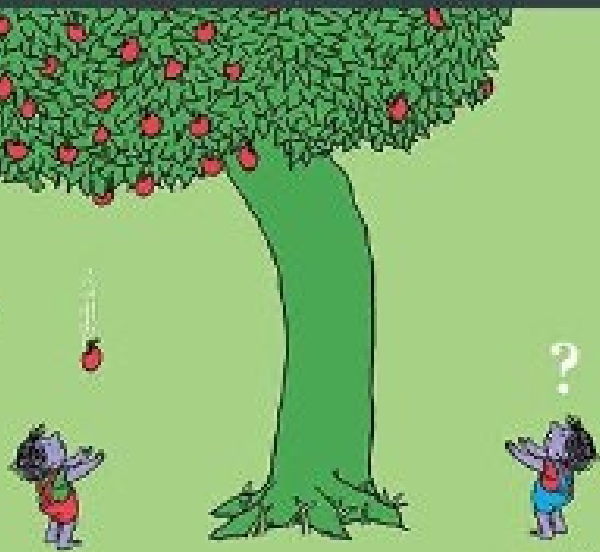
Parks Equity Index

2024 Approach & Updates



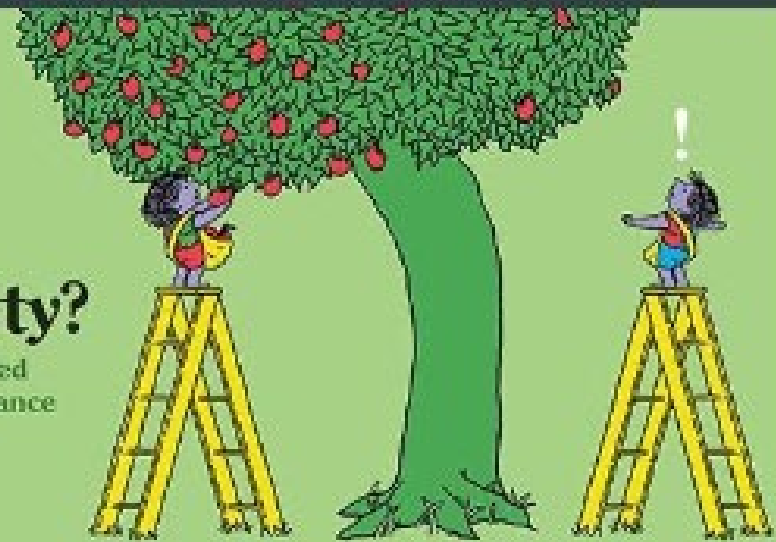
Inequality

Unequal access to opportunities



Equality?

Evenly distributed tools and assistance



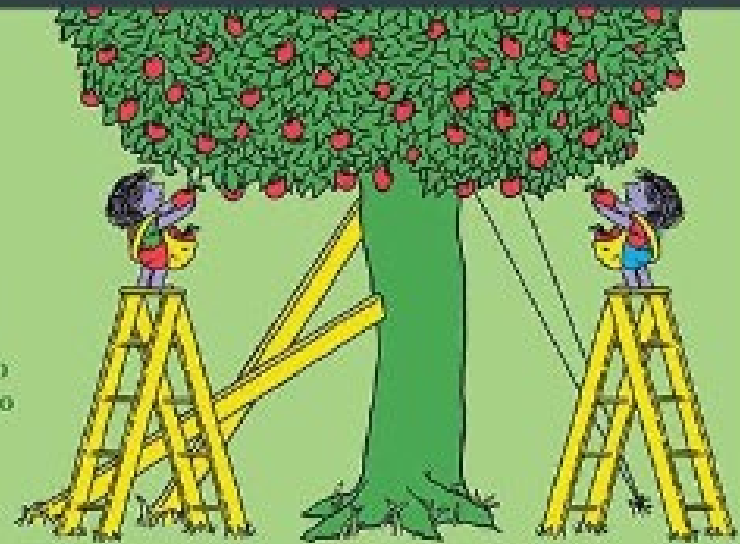
Equity

Custom tools that identify and address inequality



Justice

Fixing the system to offer equal access to both tools and opportunities



Milwaukee County's Commitment: By achieving racial equity, Milwaukee is the healthiest county in Wisconsin.

Figure 1

Social Determinants of Health

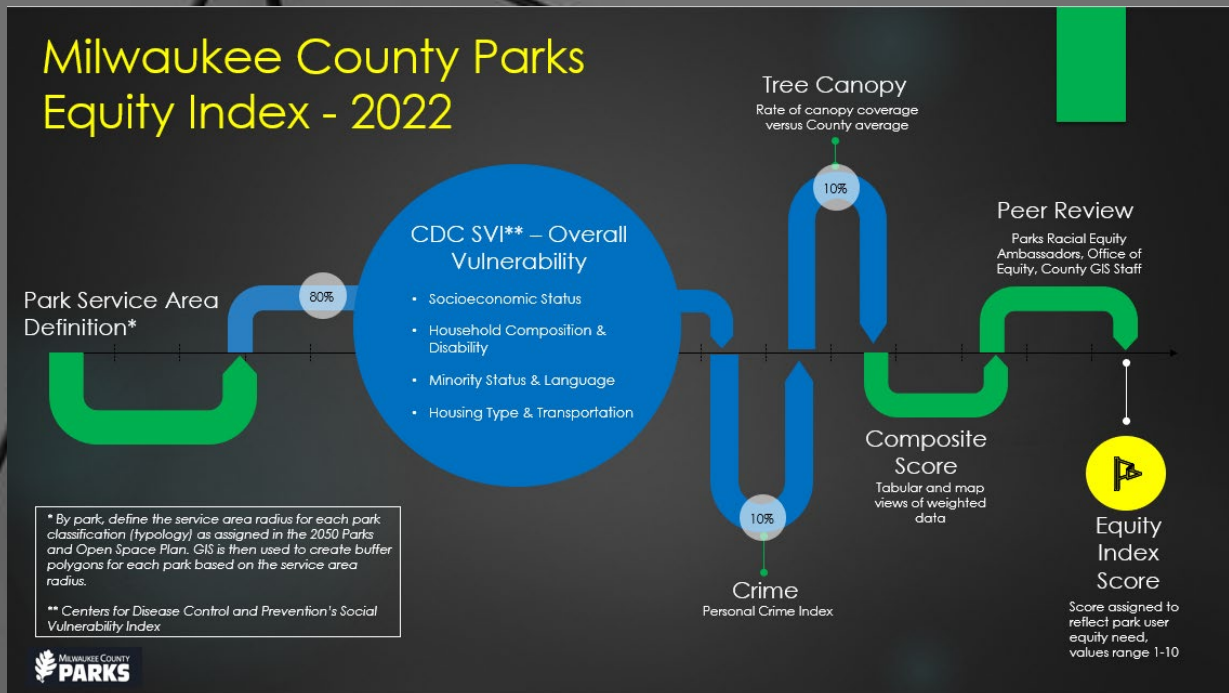
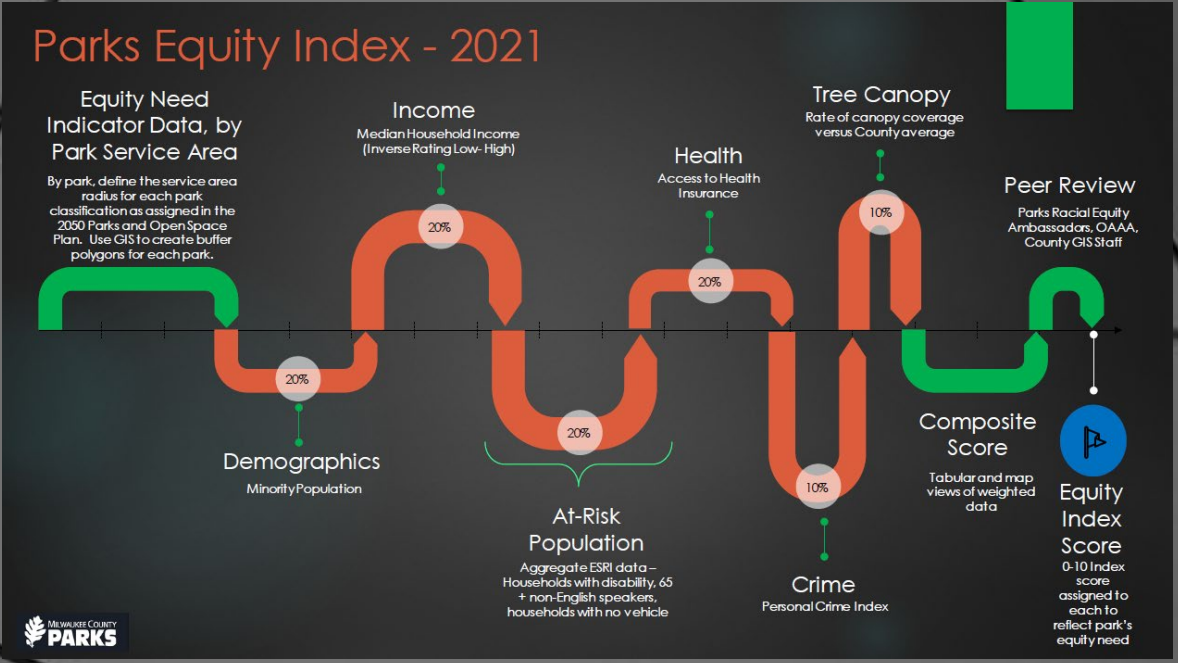
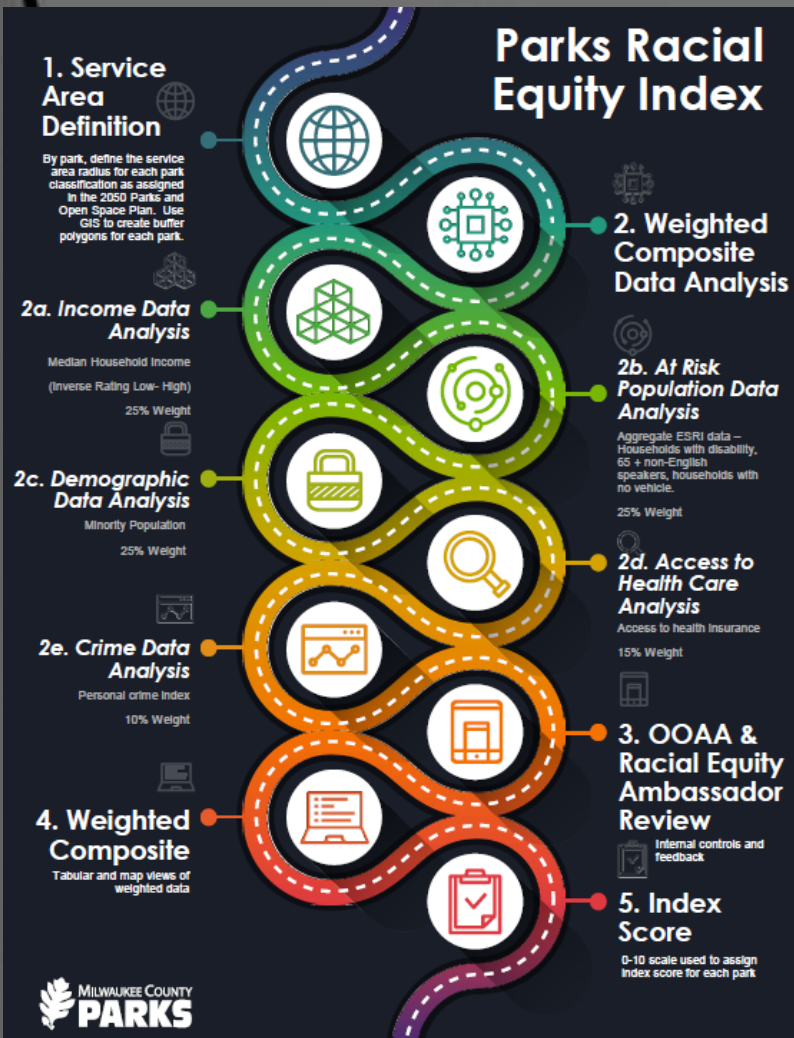
| Economic Stability | Neighborhood and Physical Environment | Education | Food | Community and Social Context | Health Care System |
|--------------------|---------------------------------------|---------------------------|---------------------------|------------------------------|---|
| Employment | Housing | Literacy | Hunger | Social integration | Health coverage |
| Income | Transportation | Language | Access to healthy options | Support systems | Provider availability |
| Expenses | Safety | Early childhood education | | Community engagement | Provider linguistic and cultural competency |
| Debt | Parks | Vocational training | | Discrimination | Quality of care |
| Medical bills | Playgrounds | Higher education | | Stress | |
| Support | Walkability | | | | |
| | Zip code / geography | | | | |

Health Outcomes

Mortality, Morbidity, Life Expectancy, Health Care Expenditures, Health Status, Functional Limitations

Process and Data Improvements since 2020

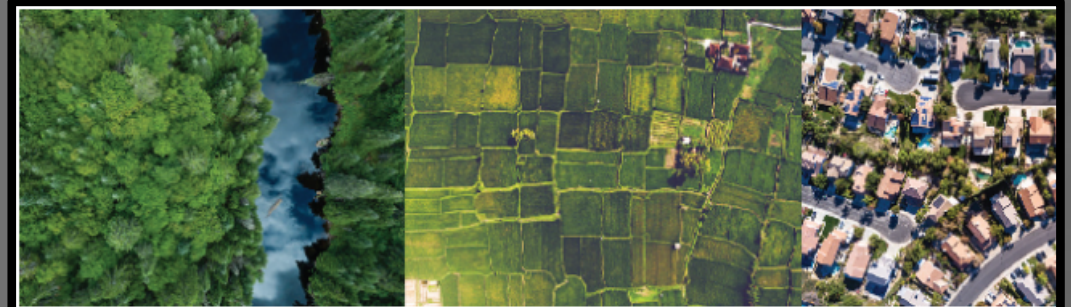
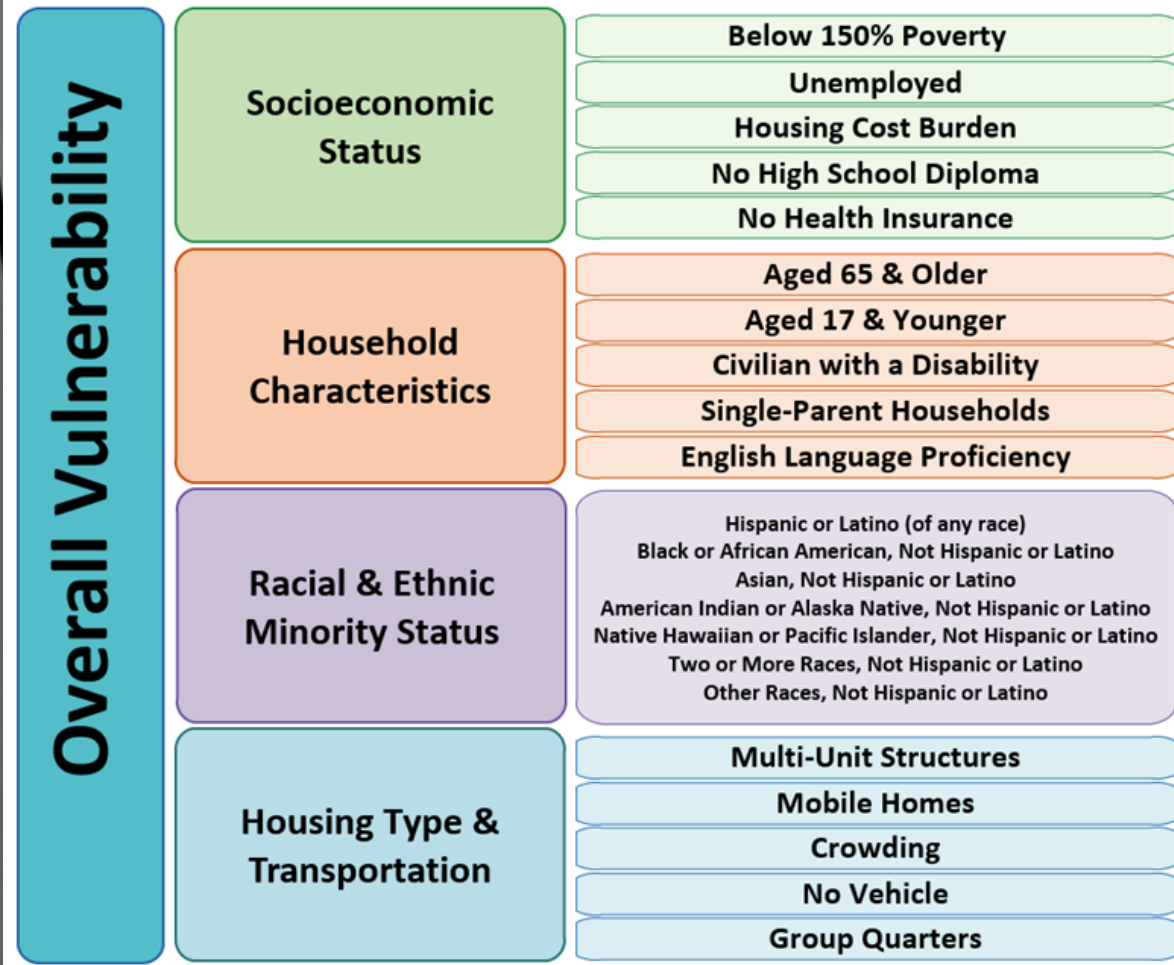
Pilot Parks Equity Index



Centers for Disease Control (CDC) Social Vulnerability Index (SVI)

Variables Used

American Community Survey (ACS), 2016-2020 (5-year) data for the following estimates:



Geospatial Determinants of Health

The places of our lives – our homes, workplaces, schools, parks, and houses of worship – affect the quality of our health and influence our experience with disease and well-being. Geospatial science, geographic information systems (GIS), and cartographic visualization provide important concepts, methods, and tools equipping public health scientists to examine, characterize, and analyze the important relationship between our health and the places of our lives.

Trust for Public Land – 10-Minute Walk Analysis

Why 10-minute walk to a park?

Close-to-home parks serve as essential backyards for millions of people and open up countless possibilities for communities and cities by helping to confront some of today's most pressing urban challenges.

The 10-minute walk metric—equivalent to approximately a half-mile for an able-bodied person—is the average distance most people are willing to walk to reach a destination, a standard that helps us examine the number of opportunities and resources a person has close to home.



Trust for Public Land – 10-Minute Walk Analysis



ParkServe® Milwaukee, WI ParkEvaluator™ Home Survey Help

WASHINGTON

Layers

- Park access
- Parks
- 10 minute walk service areas
- Priority areas for new parks ⓘ
 - Moderate priority
 - High priority
 - Very high priority
- Heat risk priority zones ⓘ
- Schools ⓘ
- Park amenities ⓘ
- ParkScore® Index - park equity measures ⓘ
- Demographics ⓘ
- Health
- Basemaps

Topographic

Zoom to Urban Area

Park Results

Milwaukee, WI - City Level

90.2%

Residents within a 10-minute walk of a park

57,977

People outside a 10-minute walk
Total Population: 591,523

[View Report](#)

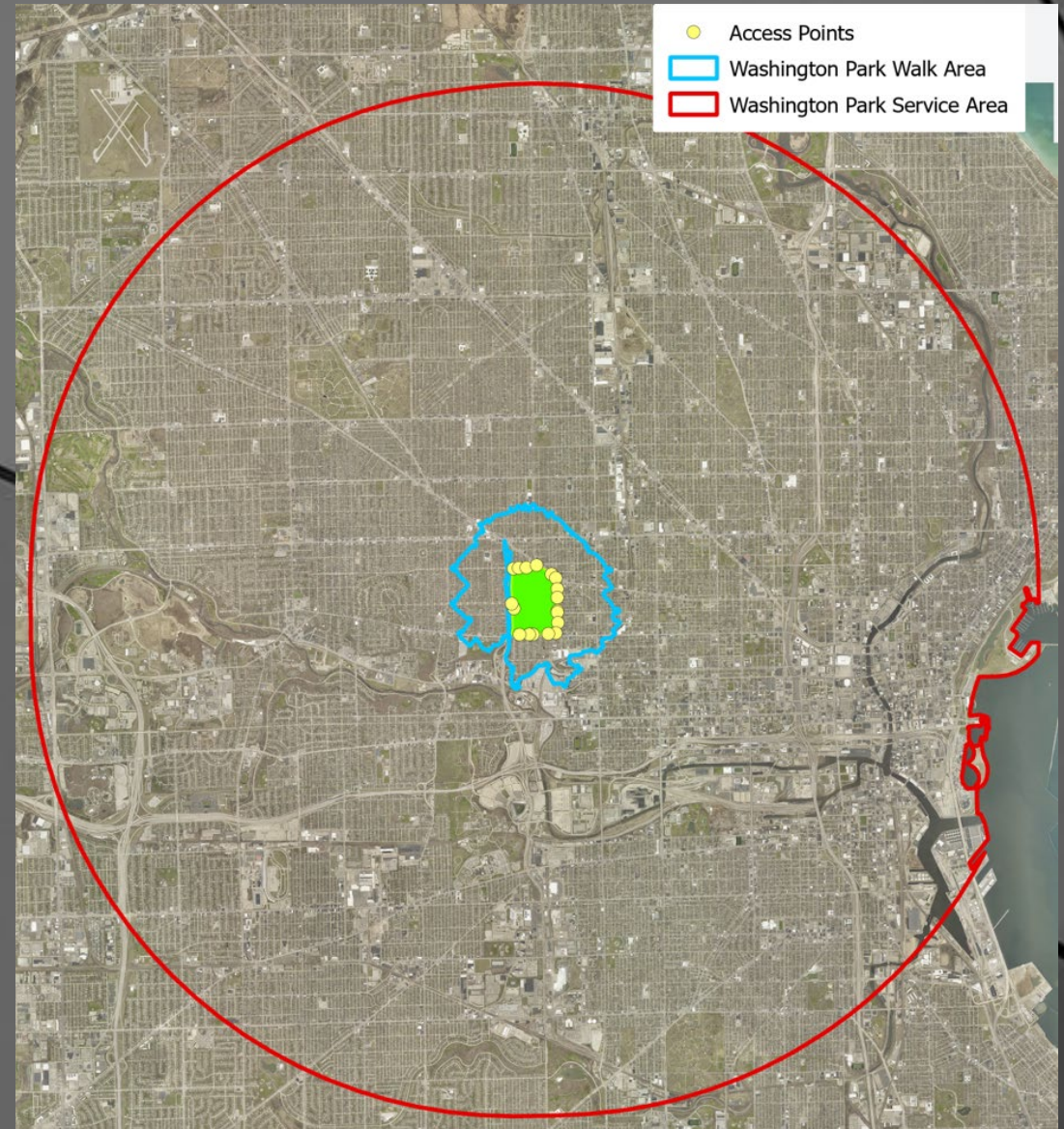
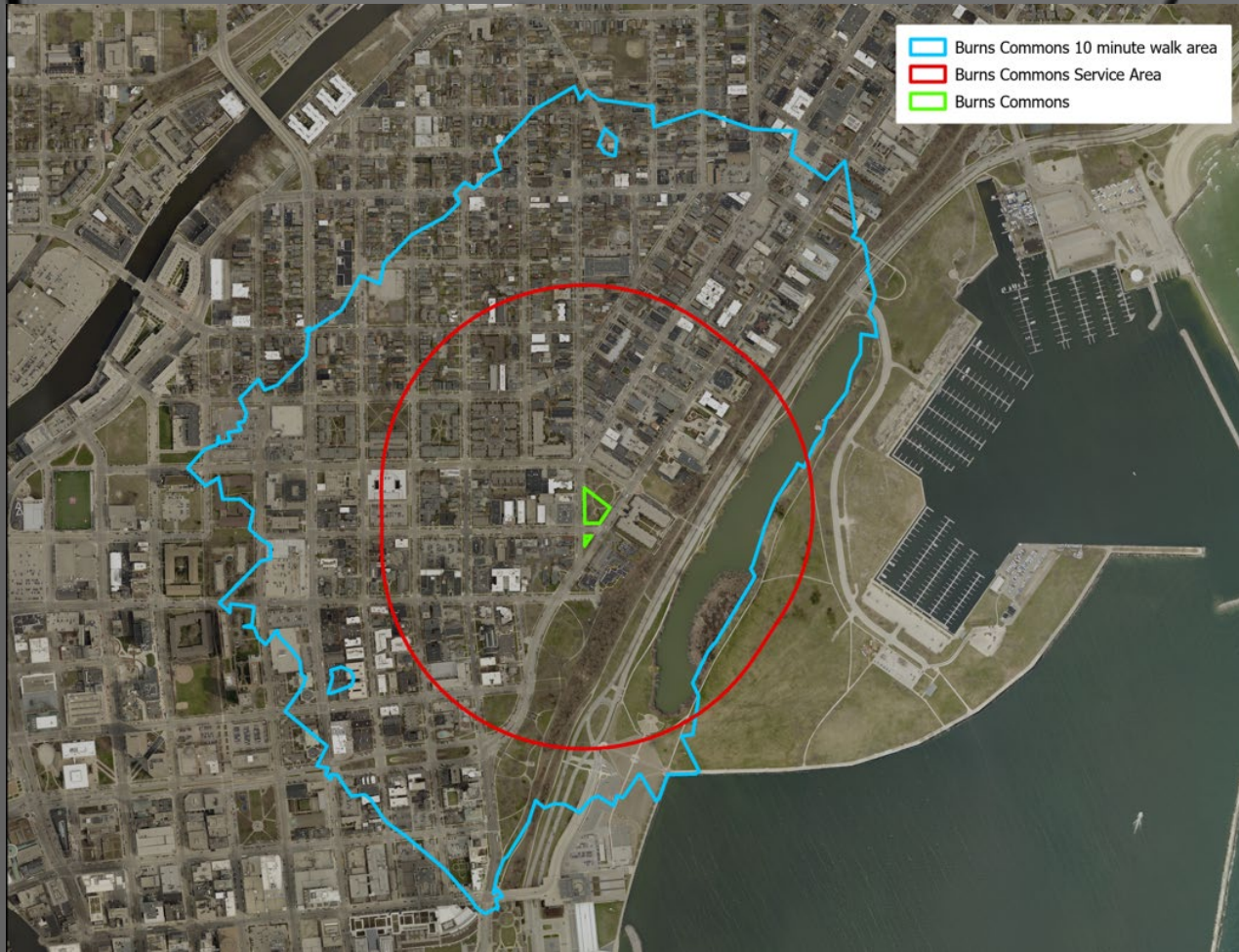
[Export Report](#)

[ParkEvaluator™ User Manual](#)

POWERED BY **esri**

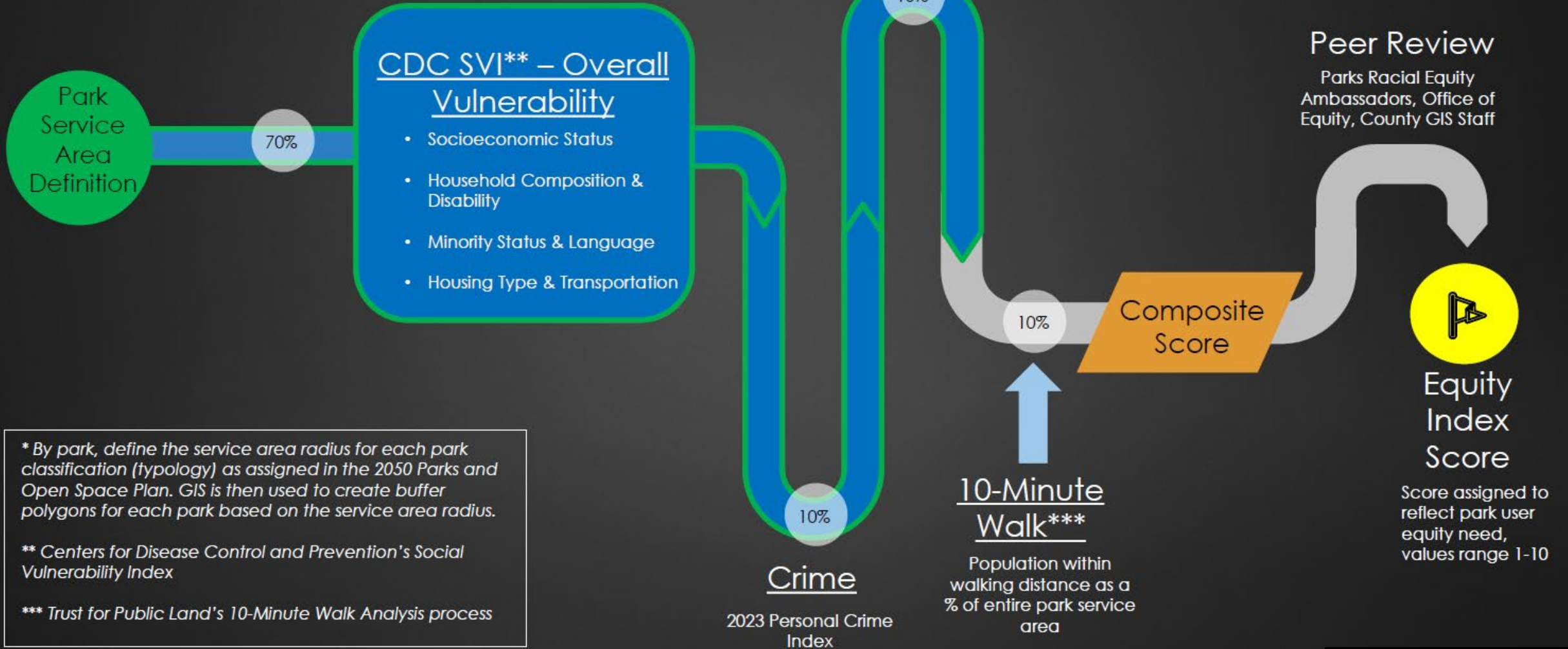
The screenshot displays the ParkServe web application interface. The main map shows Milwaukee, WI, with various layers overlaid, including parks, 10-minute walk service areas, and priority areas for new parks. The interface includes a search bar, navigation controls, and a 'Park Results' panel on the right. The 'Park Results' panel shows that 90.2% of residents in Milwaukee, WI are within a 10-minute walk of a park, with 57,977 people outside this range. The total population is 591,523. The interface also includes a 'View Report' button, an 'Export Report' button, and a link to the 'ParkEvaluator™ User Manual'. The map is powered by Esri.

Trust for Public Land – 10-Minute Walk Analysis



Milwaukee County Parks Equity Index – 2024

Typology Model



* By park, define the service area radius for each park classification (typology) as assigned in the 2050 Parks and Open Space Plan. GIS is then used to create buffer polygons for each park based on the service area radius.

** Centers for Disease Control and Prevention's Social Vulnerability Index

*** Trust for Public Land's 10-Minute Walk Analysis process

Higher Score = Higher Equity Need

DATA SOURCES

ESRI ArcGIS Community Analyst tool used to was used to analyze the data, applying a ½-mile buffer to all parks and parkways. Community Analyst is a cloud-based mapping solution to visualize and analyze demographic information using up to date variables. <https://www.esri.com/en-us/arcgis/products/arcgis-community-analyst/overview>

Four variables used for 2024 Milwaukee County Parks Equity Index:

CDC SVI Social Vulnerability Index https://www.atsdr.cdc.gov/placeandhealth/svi/documentation/SVI_documentation_2020.html
2020 Social Vulnerability Index (SVI). Created by the Centers for Disease Control and Prevention (CDC) / Agency for Toxic Substances and Disease Registry (ATSDR) / Geospatial Research, Analysis, and Services Program (GRASP). The Social Vulnerability Index (SVI) uses U.S. Census data to determine the social vulnerability of every county and tract. CDC SVI ranks each county and tract on 15 social factors, including poverty, lack of vehicle access, and crowded housing, and groups them into four related themes: Socioeconomic Status, Household Characteristics, Racial & Ethnic Minority Status, and Housing and Transportation.

Personal Crime: 2023 Personal Crime Index (AGS), 2023

The Personal Crime Index provides an assessment of the relative risk of four major crime types: murder, rape, robbery, and assault. It is modeled using data from the FBI Uniform Crime Report and demographic data from the Census and AGS.

[AGS-CrimeRisk-Methodology-2020B.pdf \(appliedgeographic.com\)](#) [CrimeRisk - Applied Geographic Solutions](#)

Tree Canopy: 2020 LiDAR derived vegetation data, Milwaukee County LIO, 2020

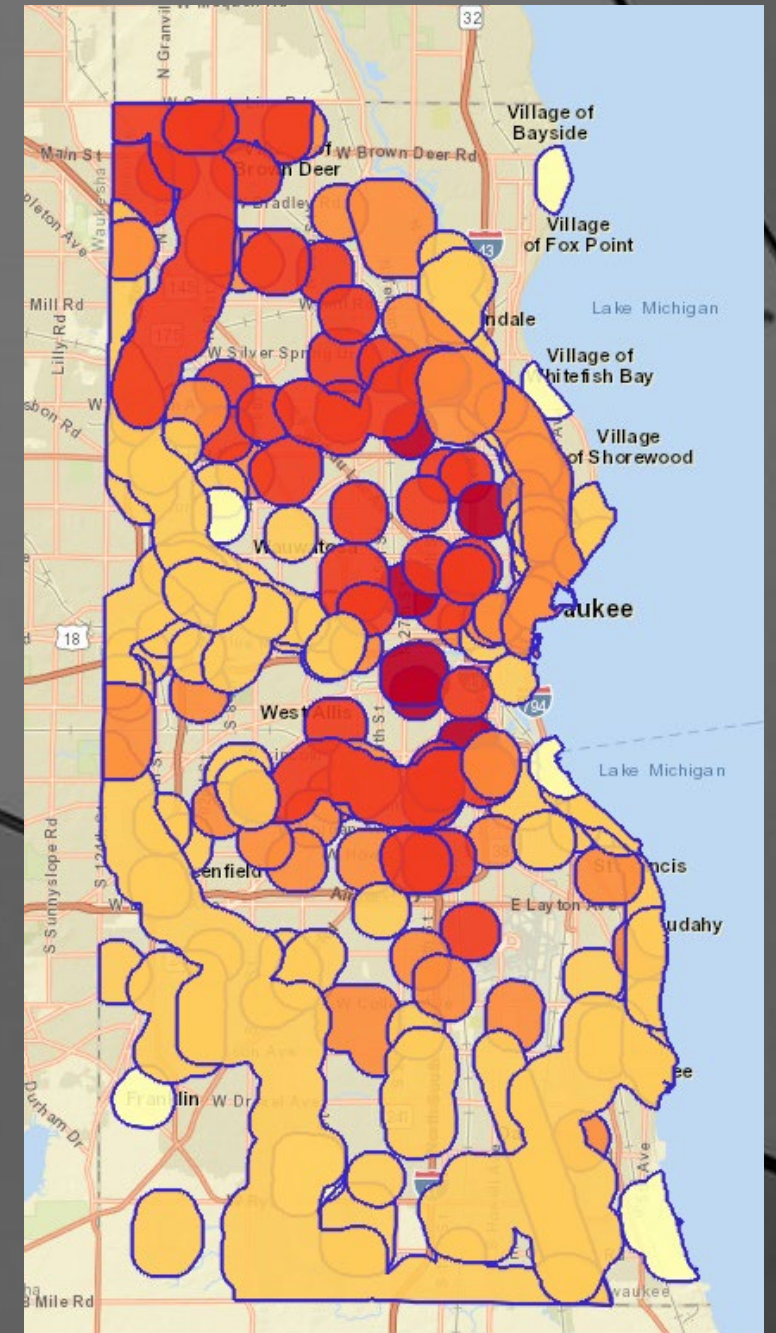
All polygons represent areas of canopy that are 8 feet or higher.

Population Counts, ESRI

Population data per walk service area was from ESRI 2023 demographic data.

Criteria Weights 2024, Adjacency Model

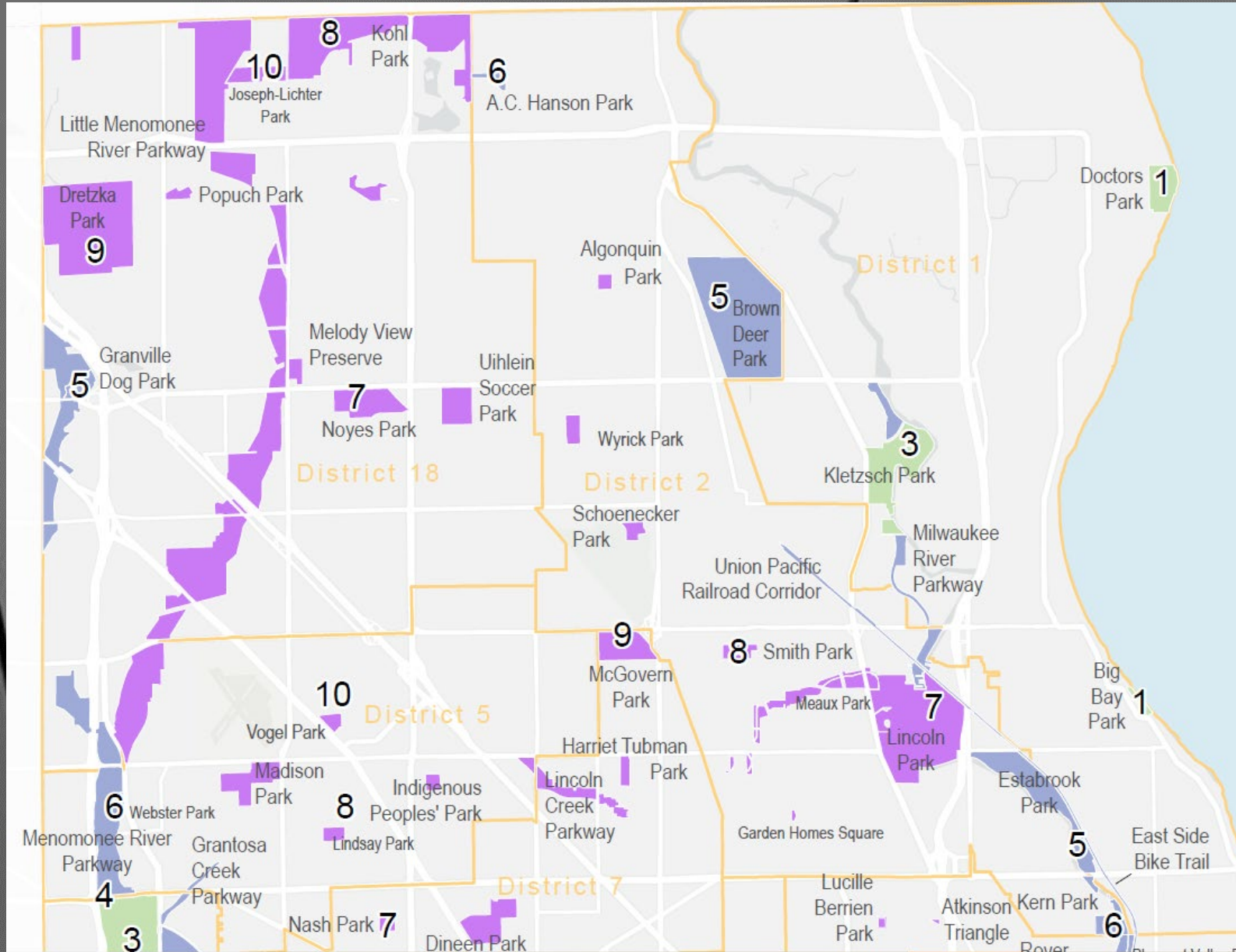
| | |
|-----|----------------------------------|
| 70% | CDC SVI 2020 |
| 10% | 2020 Tree Canopy, ranked order |
| 10% | 2023 Personal Crime Index |
| 10% | Population counts within buffers |



Equity Index Score, Adjacency Model - Higher Score = Higher Equity Need

| Site | Rank | 2024 Equity Index Score* (1-10) | Final score | RPL_THEMES | | | | 2023 Personal Crime Index | | | | CanoPercen | | | | Population | | | |
|-------------------------------------|------|---------------------------------|-------------|------------|-------|--------|----------------|---------------------------|-------|--------|----------------|------------|-------|--------|----------------|------------|-------|--------|----------------|
| | | | | Value | Score | weight | Weighted score | Value | Score | weight | Weighted score | Value | Score | weight | Weighted score | Value | Score | weight | Weighted score |
| Mitchell Park | 1 | 10 | 0.84 | 0.978883 | 1.00 | 0.70 | 0.70 | 183 | 0.37 | 0.10 | 0.03 | 15.456146 | 0.83 | 0.10 | 0.08 | 11,967 | 0.22 | 0.10 | 0.02 |
| Clarke Square Park | 2 | 10 | 0.83 | 0.972951 | 0.99 | 0.70 | 0.70 | 170 | 0.34 | 0.10 | 0.03 | 23.125299 | 0.71 | 0.10 | 0.07 | 13,741 | 0.25 | 0.10 | 0.03 |
| Kosciuszko Park | 3 | 10 | 0.81 | 0.925087 | 0.94 | 0.70 | 0.66 | 169 | 0.34 | 0.10 | 0.03 | 18.640628 | 0.78 | 0.10 | 0.08 | 19,252 | 0.35 | 0.10 | 0.04 |
| Rose Park | 4 | 10 | 0.81 | 0.894704 | 0.91 | 0.70 | 0.64 | 443 | 0.93 | 0.10 | 0.09 | 30.068707 | 0.60 | 0.10 | 0.06 | 9,481 | 0.17 | 0.10 | 0.02 |
| Tiefenthaler Park | 5 | 10 | 0.81 | 0.905544 | 0.92 | 0.70 | 0.65 | 362 | 0.76 | 0.10 | 0.07 | 26.351370 | 0.66 | 0.10 | 0.07 | 10,981 | 0.20 | 0.10 | 0.02 |
| Garden Homes Square | 6 | 10 | 0.80 | 0.902396 | 0.92 | 0.70 | 0.64 | 350 | 0.73 | 0.10 | 0.07 | 18.557696 | 0.78 | 0.10 | 0.08 | 5,766 | 0.10 | 0.10 | 0.01 |
| Moody Park | 7 | 10 | 0.80 | 0.874065 | 0.89 | 0.70 | 0.62 | 474 | 1.00 | 0.10 | 0.10 | 27.983959 | 0.63 | 0.10 | 0.06 | 8,646 | 0.16 | 0.10 | 0.02 |
| Walker Square Park | 8 | 10 | 0.79 | 0.906169 | 0.92 | 0.70 | 0.65 | 186 | 0.37 | 0.10 | 0.04 | 15.976716 | 0.82 | 0.10 | 0.08 | 11,487 | 0.21 | 0.10 | 0.02 |
| Sherman Park | 9 | 10 | 0.78 | 0.864524 | 0.88 | 0.70 | 0.62 | 393 | 0.82 | 0.10 | 0.08 | 30.657778 | 0.59 | 0.10 | 0.06 | 13,314 | 0.24 | 0.10 | 0.02 |
| Joseph-Lichter Park | 10 | 10 | 0.77 | 0.902907 | 0.92 | 0.70 | 0.64 | 339 | 0.71 | 0.10 | 0.07 | 35.639084 | 0.51 | 0.10 | 0.05 | 4,763 | 0.08 | 0.10 | 0.01 |
| Vogel Park | 11 | 10 | 0.77 | 0.879929 | 0.90 | 0.70 | 0.63 | 303 | 0.63 | 0.10 | 0.06 | 26.383912 | 0.66 | 0.10 | 0.07 | 7,606 | 0.14 | 0.10 | 0.01 |
| Clarence and Cleopatra Johnson Park | 12 | 10 | 0.76 | 0.819313 | 0.83 | 0.70 | 0.58 | 445 | 0.94 | 0.10 | 0.09 | 21.714214 | 0.73 | 0.10 | 0.07 | 7,601 | 0.14 | 0.10 | 0.01 |
| Atkinson Triangle | 13 | 9 | 0.76 | 0.843304 | 0.86 | 0.70 | 0.60 | 386 | 0.81 | 0.10 | 0.08 | 27.594741 | 0.64 | 0.10 | 0.06 | 7,728 | 0.14 | 0.10 | 0.01 |
| Lincoln Creek Parkway | 14 | 9 | 0.76 | 0.817936 | 0.83 | 0.70 | 0.58 | 286 | 0.59 | 0.10 | 0.06 | 29.680880 | 0.61 | 0.10 | 0.06 | 29,955 | 0.55 | 0.10 | 0.06 |
| Carver Park | 15 | 9 | 0.75 | 0.825368 | 0.84 | 0.70 | 0.59 | 373 | 0.78 | 0.10 | 0.07 | 18.044111 | 0.79 | 0.10 | 0.08 | 6,091 | 0.11 | 0.10 | 0.01 |
| Pulaski Park | 16 | 9 | 0.75 | 0.880302 | 0.90 | 0.70 | 0.63 | 144 | 0.28 | 0.10 | 0.03 | 27.759528 | 0.64 | 0.10 | 0.06 | 16,141 | 0.29 | 0.10 | 0.03 |
| Lucille Berrien Park | 17 | 9 | 0.75 | 0.828444 | 0.84 | 0.70 | 0.59 | 369 | 0.77 | 0.10 | 0.07 | 27.422908 | 0.64 | 0.10 | 0.06 | 8,934 | 0.16 | 0.10 | 0.02 |
| Wyrick Park | 18 | 9 | 0.74 | 0.884322 | 0.90 | 0.70 | 0.63 | 197 | 0.40 | 0.10 | 0.04 | 28.974347 | 0.62 | 0.10 | 0.06 | 4,435 | 0.08 | 0.10 | 0.01 |
| McGovern Park | 19 | 9 | 0.73 | 0.845741 | 0.86 | 0.70 | 0.60 | 281 | 0.58 | 0.10 | 0.06 | 33.093755 | 0.55 | 0.10 | 0.06 | 8,561 | 0.15 | 0.10 | 0.02 |
| Beckum Park | 20 | 9 | 0.73 | 0.792869 | 0.81 | 0.70 | 0.56 | 368 | 0.77 | 0.10 | 0.07 | 20.839554 | 0.75 | 0.10 | 0.08 | 6,306 | 0.11 | 0.10 | 0.01 |
| Harriet Tubman Park | 21 | 9 | 0.72 | 0.832103 | 0.85 | 0.70 | 0.59 | 288 | 0.59 | 0.10 | 0.06 | 33.067795 | 0.55 | 0.10 | 0.06 | 9,019 | 0.16 | 0.10 | 0.02 |
| Indigenous Peoples' Park | 22 | 9 | 0.71 | 0.825282 | 0.84 | 0.70 | 0.59 | 224 | 0.46 | 0.10 | 0.04 | 26.381782 | 0.66 | 0.10 | 0.07 | 8,880 | 0.16 | 0.10 | 0.02 |
| KK Sports Center | 23 | 9 | 0.71 | 0.834740 | 0.85 | 0.70 | 0.60 | 122 | 0.23 | 0.10 | 0.02 | 24.099111 | 0.69 | 0.10 | 0.07 | 12,034 | 0.22 | 0.10 | 0.02 |
| King Park | 24 | 9 | 0.70 | 0.751245 | 0.76 | 0.70 | 0.53 | 258 | 0.53 | 0.10 | 0.05 | 16.571907 | 0.81 | 0.10 | 0.08 | 17,201 | 0.31 | 0.10 | 0.03 |
| Schoenecker Park | 25 | 9 | 0.69 | 0.807026 | 0.82 | 0.70 | 0.58 | 292 | 0.60 | 0.10 | 0.06 | 35.348630 | 0.52 | 0.10 | 0.05 | 3,130 | 0.05 | 0.10 | 0.01 |
| Dretzka Park | 26 | 9 | 0.69 | 0.832229 | 0.85 | 0.70 | 0.59 | 148 | 0.29 | 0.10 | 0.03 | 29.861160 | 0.60 | 0.10 | 0.06 | 2,971 | 0.05 | 0.10 | 0.01 |
| Little Menomonee River Parkway | 27 | 9 | 0.69 | 0.752780 | 0.77 | 0.70 | 0.54 | 210 | 0.42 | 0.10 | 0.04 | 31.778330 | 0.57 | 0.10 | 0.06 | 27,151 | 0.49 | 0.10 | 0.05 |
| Harley Park | 28 | 8 | 0.68 | 0.756614 | 0.77 | 0.70 | 0.54 | 298 | 0.62 | 0.10 | 0.06 | 23.943675 | 0.70 | 0.10 | 0.07 | 6,234 | 0.11 | 0.10 | 0.01 |
| Popuch Park | 29 | 8 | 0.68 | 0.812115 | 0.83 | 0.70 | 0.58 | 150 | 0.29 | 0.10 | 0.03 | 27.451524 | 0.64 | 0.10 | 0.06 | 3,466 | 0.06 | 0.10 | 0.01 |
| Lindsay Park | 30 | 8 | 0.68 | 0.779979 | 0.79 | 0.70 | 0.56 | 217 | 0.44 | 0.10 | 0.04 | 26.988436 | 0.65 | 0.10 | 0.07 | 8,026 | 0.14 | 0.10 | 0.01 |
| Dineen Park | 31 | 8 | 0.68 | 0.765964 | 0.78 | 0.70 | 0.55 | 233 | 0.47 | 0.10 | 0.05 | 23.416128 | 0.70 | 0.10 | 0.07 | 8,337 | 0.15 | 0.10 | 0.02 |
| Washington Park | 32 | 8 | 0.67 | 0.711909 | 0.72 | 0.70 | 0.51 | 355 | 0.74 | 0.10 | 0.07 | 27.672942 | 0.64 | 0.10 | 0.06 | 15,735 | 0.28 | 0.10 | 0.03 |
| West Milwaukee Park | 33 | 8 | 0.67 | 0.752883 | 0.77 | 0.70 | 0.54 | 170 | 0.34 | 0.10 | 0.03 | 10.799848 | 0.90 | 0.10 | 0.09 | 5,884 | 0.10 | 0.10 | 0.01 |
| Kohl Park | 34 | 8 | 0.67 | 0.762670 | 0.78 | 0.70 | 0.54 | 243 | 0.50 | 0.10 | 0.05 | 30.460202 | 0.59 | 0.10 | 0.06 | 8,831 | 0.16 | 0.10 | 0.02 |

Map of 2024 Equity Index Scores, Adjacency Model



Milwaukee County Parks
Adjacency 2024 Equity Score (1-10)

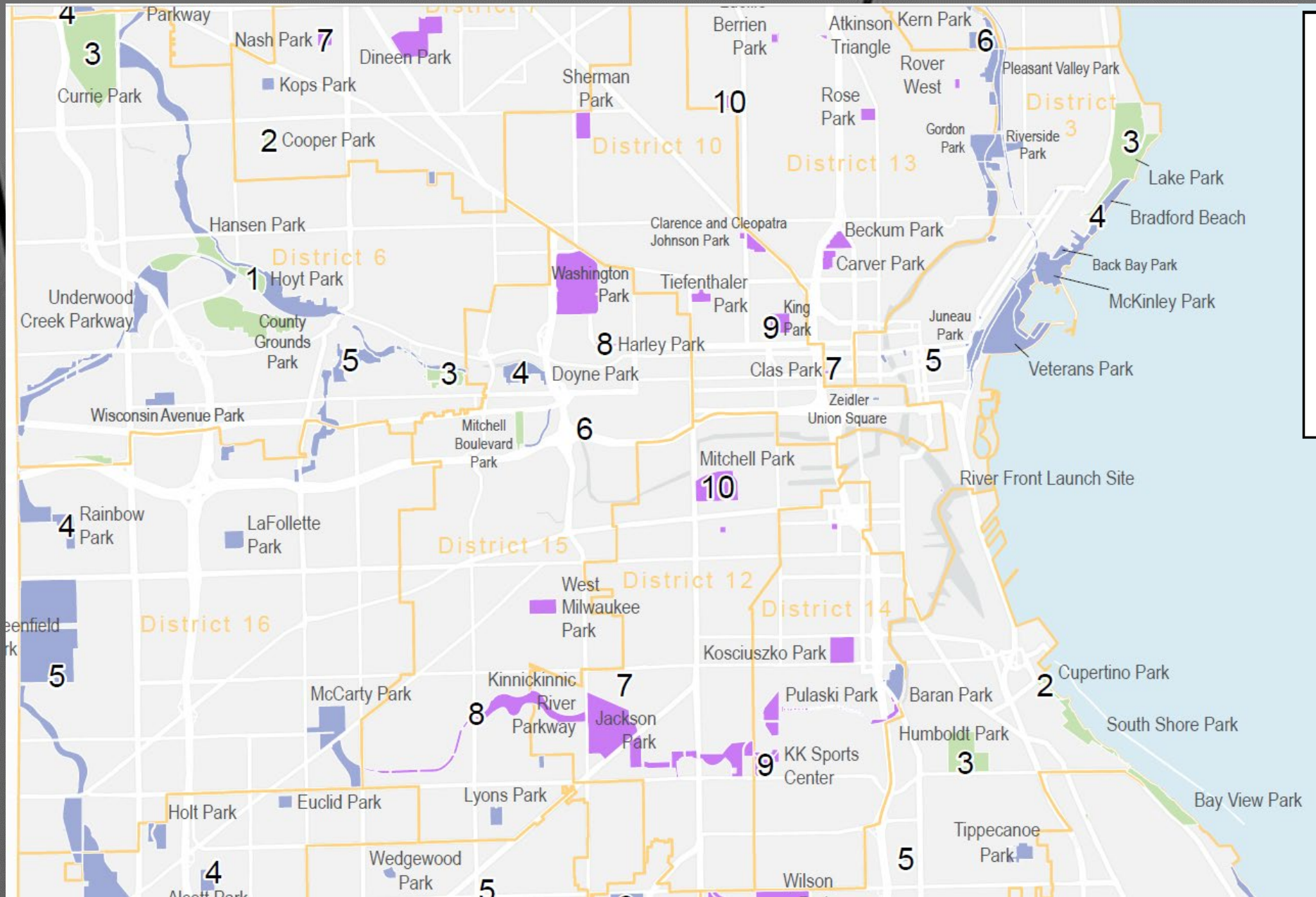
- 1-3
- 4-6
- 7-10

Milwaukee Co Supervisory Districts

MILWAUKEE COUNTY
PARKS

4/8/2024

Map of 2024 Equity Index Scores, Adjacency Model



Milwaukee County Parks
Adjacency 2024 Equity Score (1-10)

- 1-3 (Green)
- 4-6 (Blue)
- 7-10 (Purple)

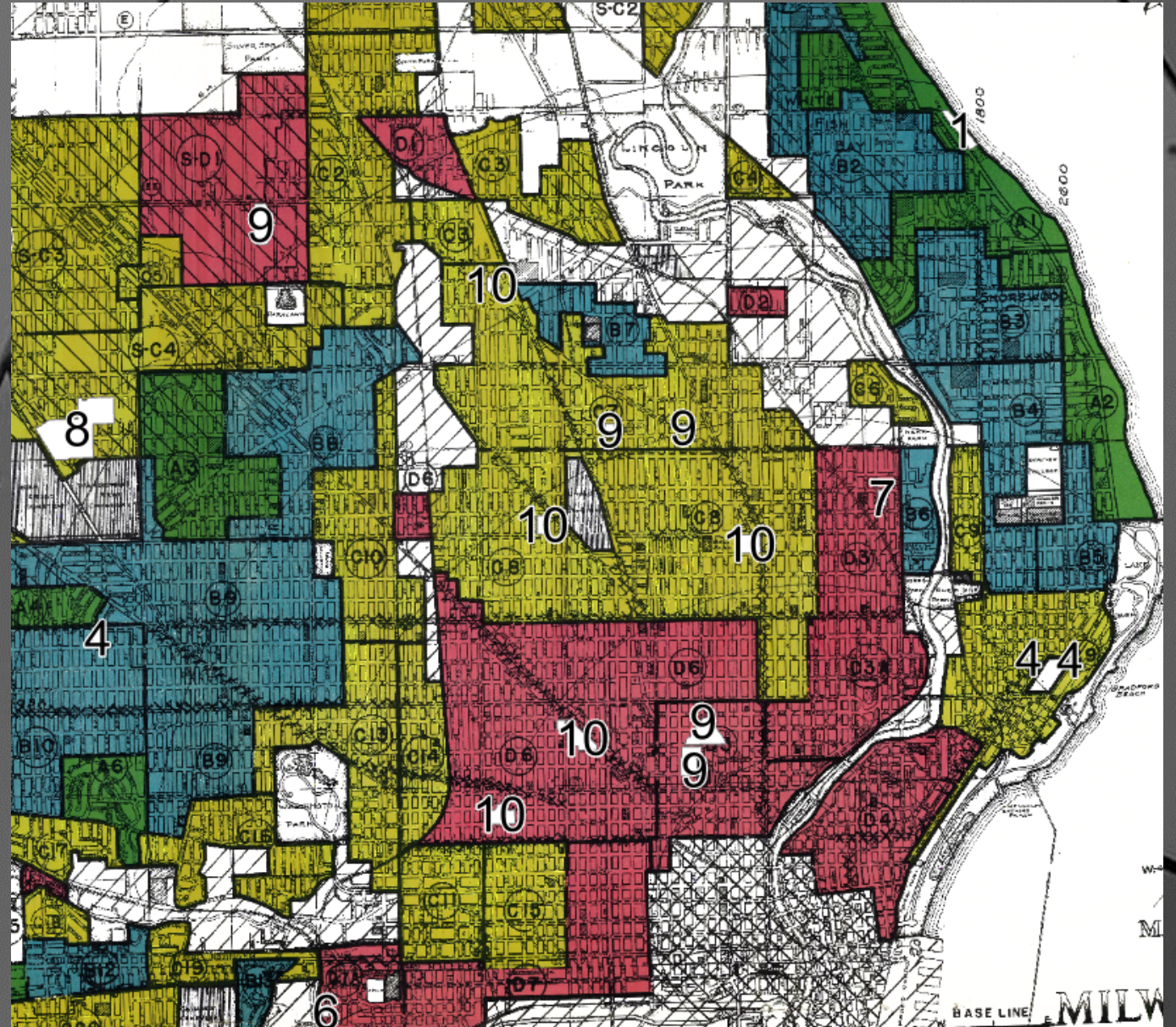
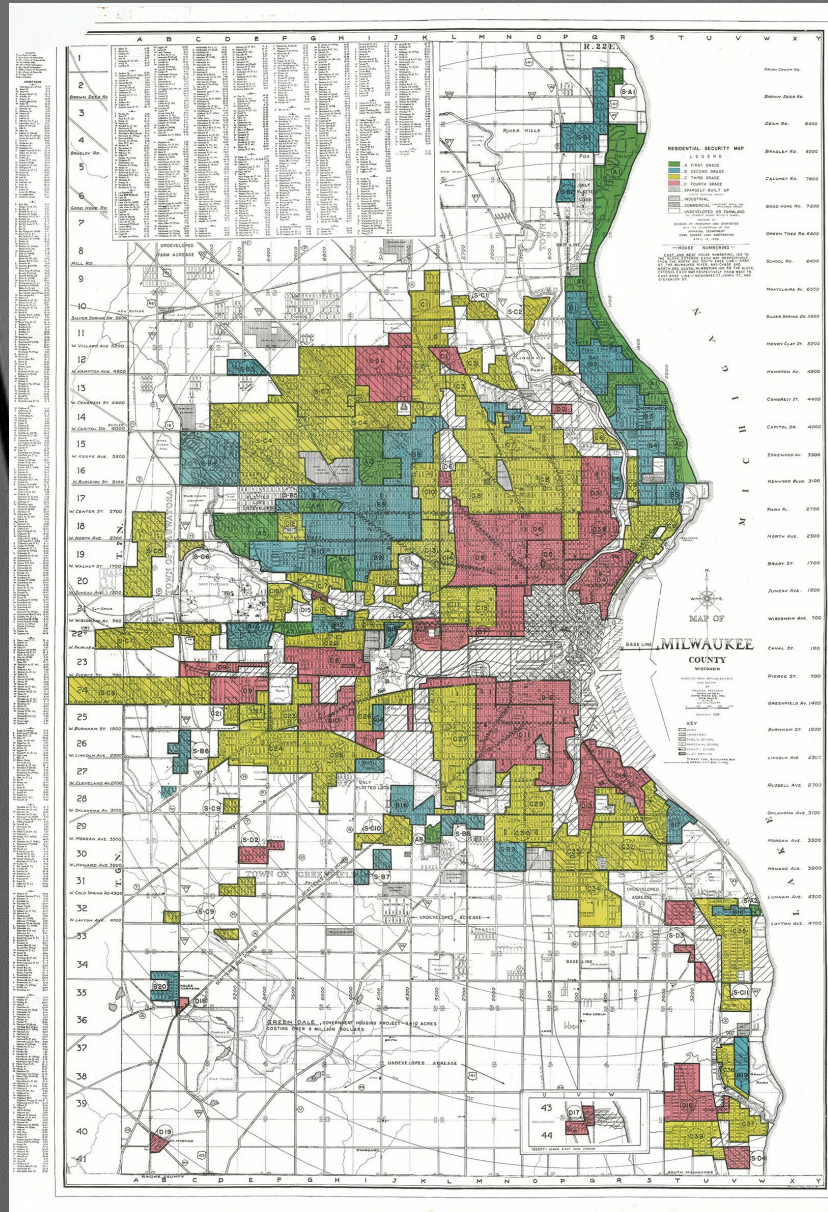
Milwaukee Co Supervisory Districts (Orange outline)

0 0.5 1 2 Miles

MILWAUKEE COUNTY **PARKS**

4/8/2024

Residential Security Maps and Parks Equity Index



2024 Planned Applications



Capital Project Planning

Used for both internal evaluation as well as submission to CIC



Major Maintenance Funding Allocations

Used for internal decision-making purposes to weigh options



Project Proposal Requests

Used in matrix evaluation and scoring of third-party project proposals twice per year



Milwaukee Parks Foundation

Prioritize and focus investments



Other Internal Uses

Possible workforce allocations, etc.

Other Applications

Planning and Development GIS Viewer - Milwaukee County Parks

Find address or place

| (2 of 2) | |
|---------------------------------|--------------------|
| SiteName | Rose Park |
| 2023 Equity Index Score* (1-10) | 8 |
| Rank | 37 |
| Movement | -5 |
| Final score | 0.612253 |
| 2022 Rank | 32 |
| Shape_Area | 416702.27294921875 |
| Shape_Length | 2577.011573007089 |

Layers

- City of Milwaukee- Local historic districts
- CDC Social Vulnerability Index 2018 - USA - Overall SVI - Tracts
- LDAC Conceptual Boundary
- Zip Codes
- Parks_Equity_2023
- Parks Equity 2022
- Compromised Sites
- Site Visits 2022 Placer (April-Sept)
- Qualified Census Tracts for the Low-Income Housing Tax Credit Program
- Bike Crash 2017-2021
- Crash Data All 2017-2021
- USA Flood Hazard Areas
- Fuels Gas Storage Tanks
- Parks Issues Reported Cityworks
- Hardscape Line Grouping Scores
- Hardscape Polygon Scores
- Hardscape - Athletic Court Scores
- Hardscape Polygon
- Hardscape Line
- Hardscape Trail Line

0.4mi

POWERED BY Esri

Current Improvements

- ❖ Updated data in all variables
- ❖ Added analysis from Trust for Public Land on 10-minute walk, amended for full system coverage.
- ❖ Created alternate adjacency model tool to evaluate each park as a neighborhood asset, versus park typology systemwide

Future Possibilities

- ❖ Heat mapping data
- ❖ Improvements to health data
- ❖ Industry trends

Q&A

Please share your thoughts and help us improve this tool!

