

COUNTY OF MILWAUKEE
Inter-Office Communication

Date: November 13, 2024

To: Marcelia Nicholson, Chairwoman, Milwaukee County Board of Supervisors

From: Guy Smith, Executive Director for Milwaukee County Parks

Subject: Scout Lake Park Property Line Issues

File Type: Informational Report

REQUEST

This report is for informational purposes only, there is no request at this time.

POLICY

Wisconsin State Statutes:	
Milwaukee County Code of General Ordinances:	
Specific Adopted Budget:	
Specific Adopted Budget Amendment:	
Specific Adopted Capital Project:	WP079001 – Scout Lake Parking Lot

BACKGROUND

Related File No's:	
Associated File No's (Including Transfer Packets):	
Previous Action Date(s):	

Scout Lake Park, 5902 W. Loomis Rd in Greendale, is a 70-acre park that contains a lake with pier, pavilion for rentals, natural area, playground, creek with wetland and other associated amenities like a parking lot, pedestrian bridge and walking paths. In the 2023 Capital budget Milwaukee County approved WP079001 which will result in a new design for the parking lot in Scout Lake Park. As part of the parking lot design process Milwaukee County is seeking to resolve a boundary line issue that impacts the location of the existing lot which is highlighted in the photos below. A portion of the lot area is actually within State highway right of way and attached to the adjacent Loomis Rd (STH 36) corridor.

On the southeastern end of Scout Lake Park there is a separate boundary issue involving Village of Greendale right of way. In the area south of the playground the cul-de-sac that exists on the northern end of S. 60th Street was built entirely within the park boundaries. This area also includes a driveway for a private residence and a

stormwater basin that is currently clogged. This clogged stormwater infrastructure causes flooding during rain events in the cul-de-sac and in the park.

Milwaukee County Parks is working to resolve both boundary issues to enable improvements to both locations within Scout Lake Park.

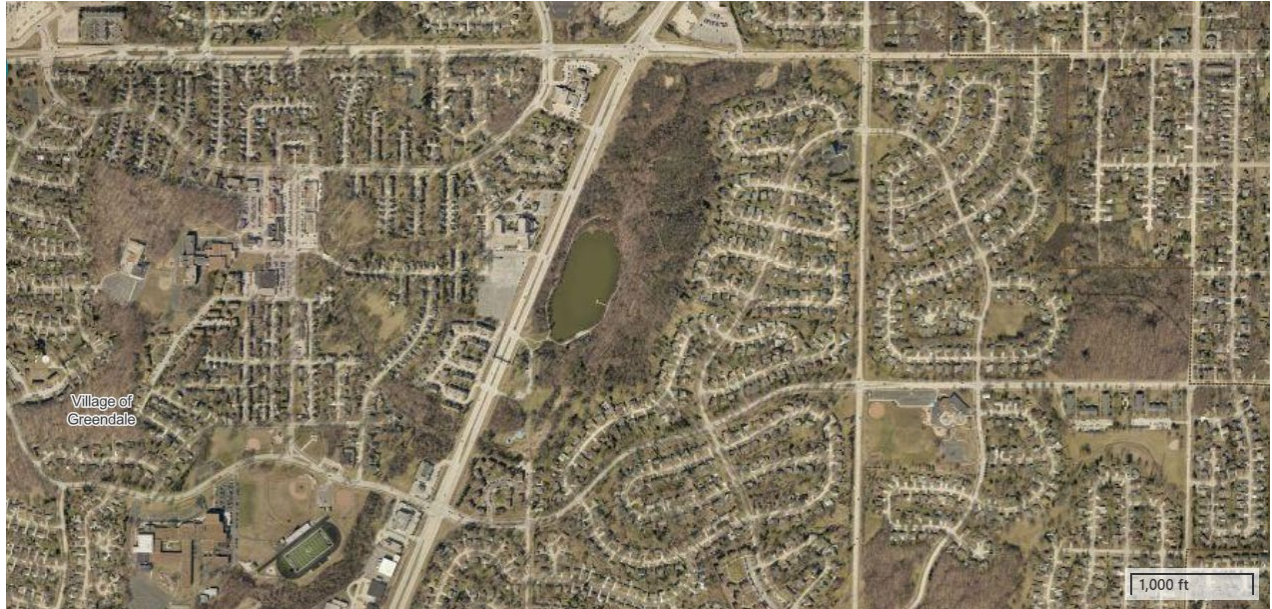


Image 1: Aerial view of Scout Lake Park.

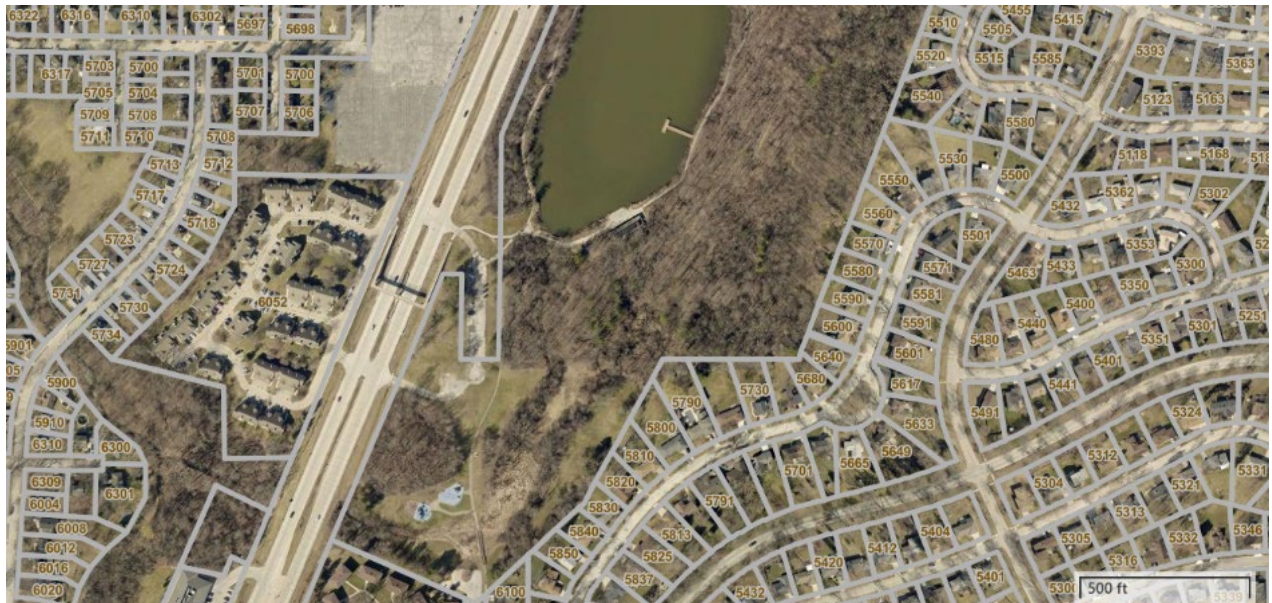


Image 2: SW section of Scout Lake Park.



Image 3: SW section of Scout Lake Park, focus on parking area boundary issues.



Image 4: SW section of Scout Lake Park, focus on S. 60th St cul-de-sac boundary issues.



Image 5: Flooding issues within S. 60th St cul-de-sac (photo taken 4/2/24)



Image 6: Aerial photo from 1951 of the SW section of the parking showing N-S road where S. 60th St is currently located.



Image 7: Aerial photo from 1967 of the SW Section of the park showing development of parking lot entrance and cul-de-sac.

ALIGNMENT TO STRATEGIC PLAN

Describe how the item aligns to the objectives in the [strategic plan](#):

- 1A: Reflect the full diversity of the County at every level of County government
- 1B: Create and nurture an inclusive culture across County government
- 1C: Increase the number of County contracts awarded to minority and women-owned businesses
- 2A: Determine what, where, and how we deliver services to advance health equity
- 2B: Break down silos across County government to maximize access to and quality of services offered
- 2C: Apply a racial equity lens to all decisions
- 3A: Invest “upstream” to address root causes of health disparities
- 3B: Enhance the County’s fiscal health and sustainability
- 3C: Dismantle barriers to diverse and inclusive communities

FISCAL EFFECT

None

TERMS

None

VIRTUAL MEETING INVITES

None

PREPARED BY:

Jim Tarantino, Deputy Director, Milwaukee County Parks

APPROVED BY:

Guy Smith, Executive Director Milwaukee County Parks *Guy D. Smith*

ATTACHMENTS:

None

CC: David Crowley, County Executive
Mary Jo Meyers, Chief of Staff, County Executive's Office
Sheldon Wasserman, Committee on Parks & Culture Chairperson
Steve Taylor, Committee on Parks & Culture Vice Chairperson
Priscilla Coggs-Jones, Committee on Parks & Culture Member
Jack Eckblad, Committee on Parks & Culture Member
Felesia Martin, Committee on Parks & Culture Member
Juan Miguel Martinez, Committee on Parks & Culture Member
Anne O'Connor, Committee on Parks & Culture Member
Kelly Bablitch, Chief of Staff, Milwaukee County Board of Supervisors
Janelle M. Jensen, Legislative Services Division Mgr, Office of the County Clerk
Aaron Hertzberg, Director, Department of Administrative Services
Joseph Lamers, Fiscal & Budget Director, DAS
Vince Masterson, Fiscal & Strategic Asset Coordinator, DAS
Pamela Bryant, Capital Finance Manager, Comptroller's Office
Justin Rodriguez, Capital Finance Analyst, Comptroller's Office
Allyson R. Smith, Committee Coordinator, Office of the County Clerk
Anthony Rux, Budget & Management Analyst, DAS-PSB
Sandy Saltzstein, Research and Policy Analyst