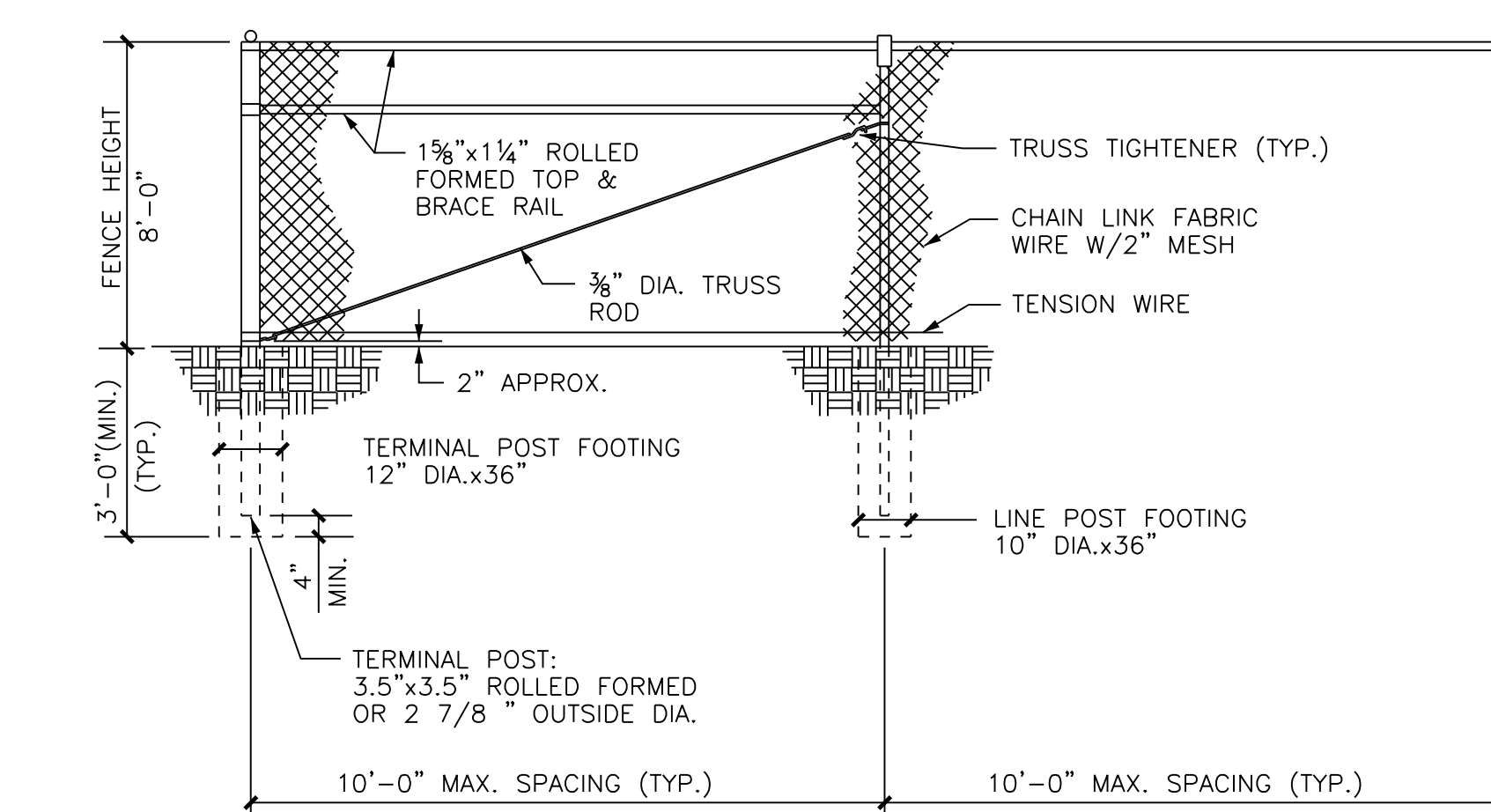
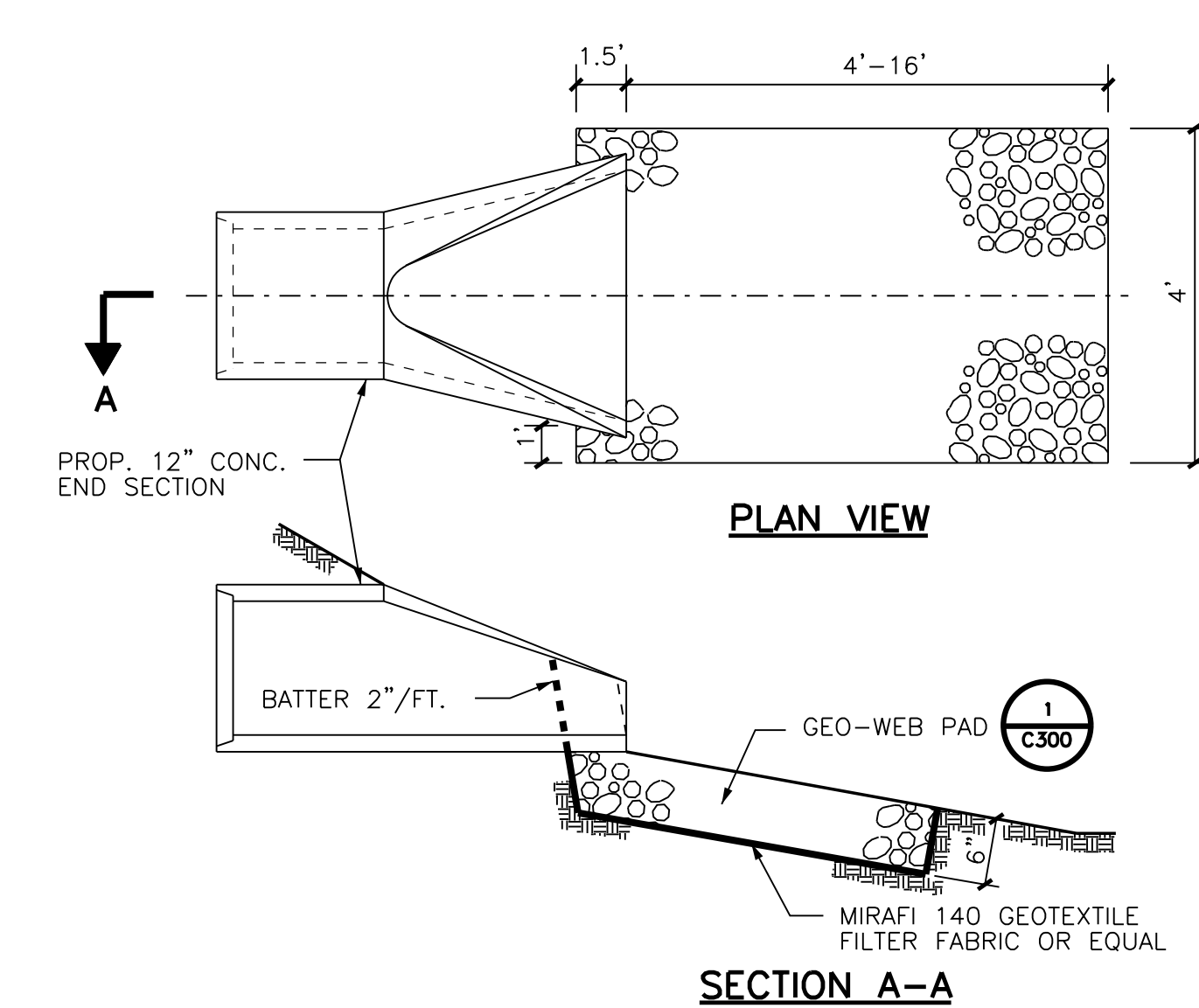


1 ASPHALT ROADWAY SECTION
N.T.S.

3 STANDARD INLET
N.T.S.



2 CHAIN LINK FENCE
N.T.S.



4 PROPOSED 12" STORM SEWER OUTFALL
N.T.S.

LEGEND

▲ TRAVERSE POINT	☒ CONTROL BOX	- - - 24" - - - BURIED STORM SEWER
1" 1" IRON PIPE	⊗ MISCELLANEOUS METER	- - - 24"cs - - - BURIED COMBINED SEWER
☐ POWER POLE	○ CLEANOUT	- - - T - - - BURIED TELEPHONE LINE
☒ POWER POLE WITH LIGHT	○ MIS MANHOLE	- - - P/L - - - PROPERTY LINE
☒ LIGHT POLE	○ MANHOLE	- - - 54 - - - EXISTING MINOR CONTOUR
○ GPD GUARD POST	⊕ CATCH BASIN	- - - 55 - - - EXISTING MAJOR CONTOUR
○ GUY WIRE	⊕ SIGN	
○ W WATER WAVE	⊕ DECIDUOUS TREE	
○ WVP WATER VALVE PIT	⊕ TREE LINE	
○ FIRE HYDRANT	- - - BURIED ELECTRIC LINE	
○ GAS VALVE	- - - BURIED GAS MAIN	
○ GSV GAS SERVICE VALVE	- - - BURIED WATER MAIN	
○ SUMP D SUMP DISCHARGE	- - - OHE - - - OVERHEAD ELECTRIC LINE	

GENERAL NOTES

1. BASE SURVEY PREPARED BY GRAEF 2010. UNDERGROUND UTILITIES HAVE BEEN SHOWN TO A REASONABLE DEGREE OF ACCURACY AND IT SHALL BE THE CONTRACTORS RESPONSIBILITY TO VERIFY THEIR EXACT LOCATIONS PRIOR TO CONSTRUCTION.
2. ALL ELEVATIONS BASED ON THE CITY OF MILWAUKEE DATUM AND CAN BE CONVERTED TO MEAN SEA LEVEL, 1929 ADJUSTMENT, BY ADDING 580.60.

PROJECT INFORMATION:

PROJECT NUMBER: 2010299.00
DATE: 10/25/13
DRAWN BY: FKO
CHECKED BY: JTM
APPROVED BY: JTM
SCALE: 1"=20'

SHEET TITLE:

OAK LEAF TRAIL CONNECTION
GRADING AND DRAINAGE PLAN

SHEET NUMBER:

C200

10/29/2013 8:45:46 AM L:_obs\2010\2010299\CAD\Site\grn\Bhe Path\VC_00_C200_Grading_299.dgn

IN ACCORDANCE WITH WISCONSIN STATUTE 182.0175, DAMAGE TO TRANSMISSION FACILITIES EXCAVATOR SHALL BE SOLELY RESPONSIBLE TO PROVIDE ADVANCE NOTICE TO THE DESIGNATED "ONE CALL SYSTEM" NOT LESS THAN THREE WORKING DAYS PRIOR TO COMMENCEMENT OF ANY EXCAVATION REQUIRED TO PERFORM WORK CONTAINED ON THIS DRAWING AND FURTHER EXCAVATOR SHALL COMPLY WITH ALL OTHER REQUIREMENTS OF THIS STATUTE RELATIVE TO EXCAVATOR'S WORK.