



# **MCDOT Complete Communities Transportation Planning Project Update and Comprehensive Safety Action Plan**

**Milwaukee County Board of Supervisors  
Transportation & Transit Committee**

Wednesday, December 4, 2024

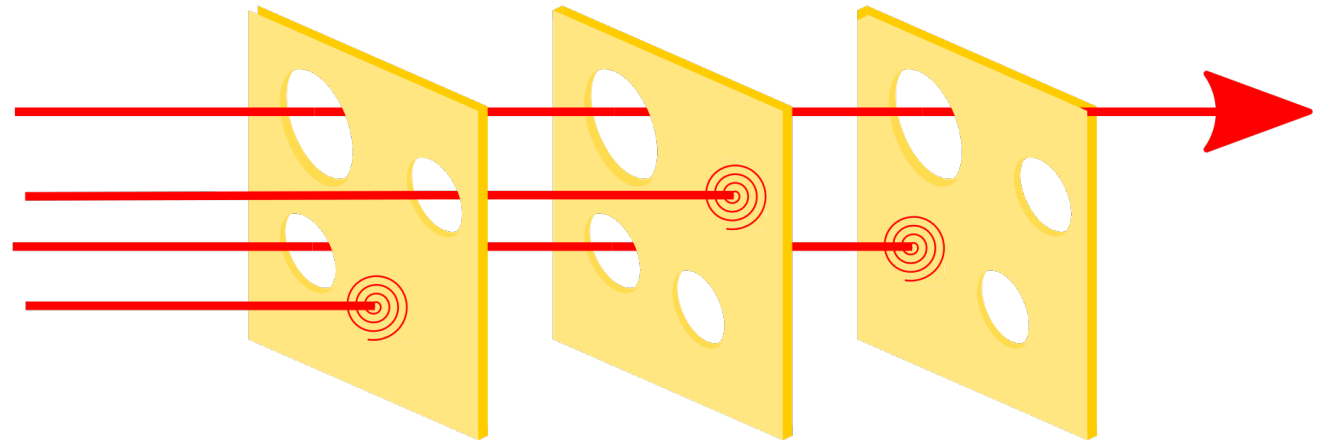
# Vision Zero vs. Prevailing Attitude



	<b>Traditional / Prevailing</b>	<b>Safe System/Vision Zero</b>
<b>Issue</b>	Preventing <b>all crashes</b>	Preventing <b>fatalities and serious injuries</b>
<b>Premise</b>	Deaths are <b>inevitable</b>	Deaths are <b>preventable</b>
<b>Focus</b>	<b>Perfecting</b> human behavior	Designing a road system that accounts for <b>human error</b>
<b>Responsibility</b>	<b>Individual</b> road users	<b>Shared:</b> road users and system designers

# Swiss Cheese Model

- Fatal crashes result from a chain of events; many things must align for it to happen
- If one event is disrupted, the fatal crash is prevented
- Break the chain of events by layering safety into every level of transportation system



# National Roadway Safety Strategy



U.S. Department of Transportation

ABOUT DOT ▾ PRIORITIES ▾ CONNECT ▾

## National Roadway Safety Strategy

The United States Department of Transportation National Roadway Safety Strategy (NRSS) outlines the Department's comprehensive approach to significantly reducing serious injuries and deaths on our Nation's highways, roads, and streets. This is the first step in working toward an ambitious long-term goal of reaching zero roadway fatalities.

[FIND OUT HOW U.S. DOT IS IMPLEMENTING THE NRSS](#)

### LEARN ABOUT THE NATIONAL ROADWAY SAFETY STRATEGY

- Read the latest on the National Roadway Safety Strategy
- The Roadway Safety Problem
- What Is the Safe System Approach?
- COMMIT TO ZERO FATALITIES  
Join Our Allies in Action



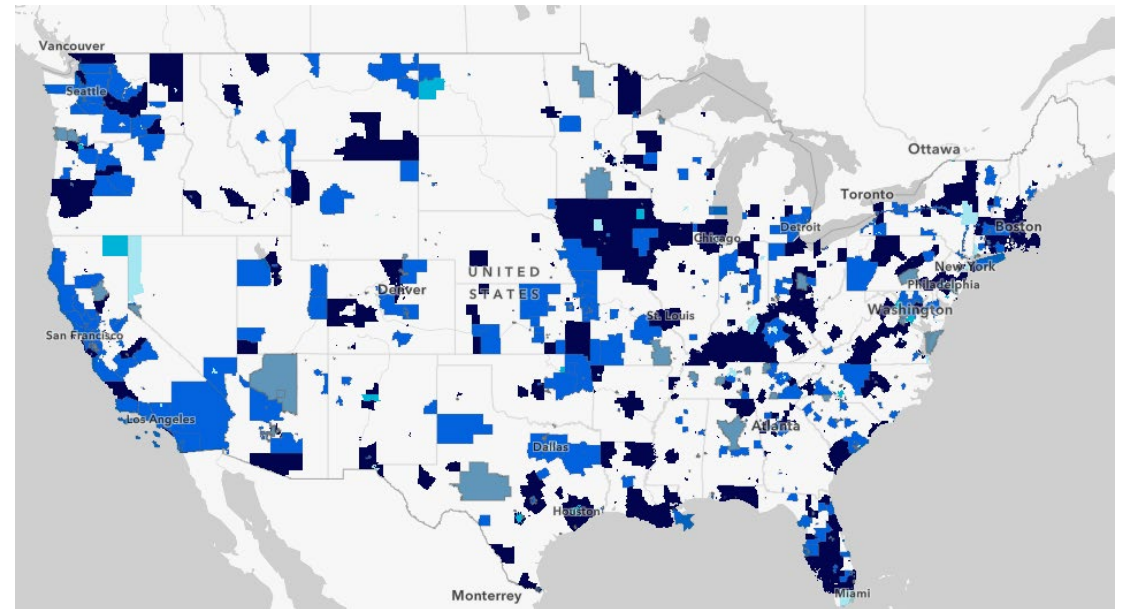
<https://www.transportation.gov/NRSS>

Source: FHWA.

# Safe Streets and Roads for All (SS4A)

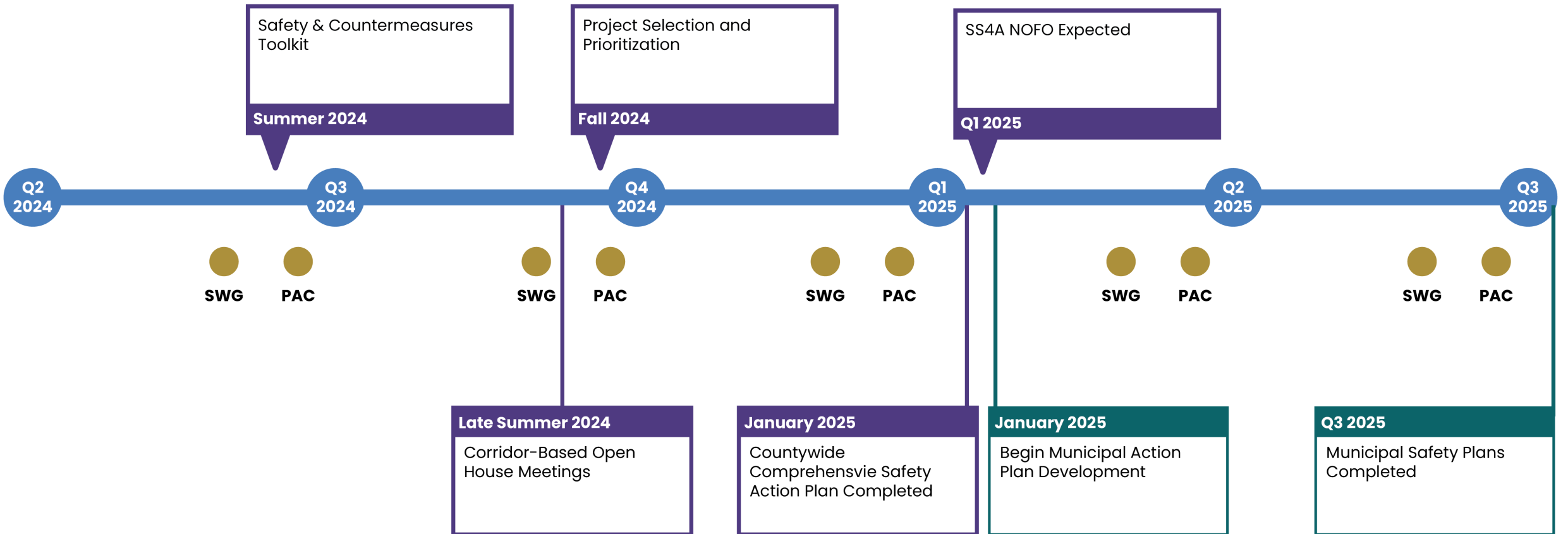


- \$5 billion available (\$1b/yr through FY 2026)
- 40% set aside for planning & demonstration grants
- Milwaukee County and five municipal partners have received demonstration activities grant funding



SS4A Award Locations

# Schedule





# Safety Action Plan Elements



**Leadership  
Commitment &  
Goal Setting**



**Planning Structure**



**Safety Analysis**



**Engagement &  
Collaboration**



**Equity  
Considerations**



**Policy and Process  
Changes**

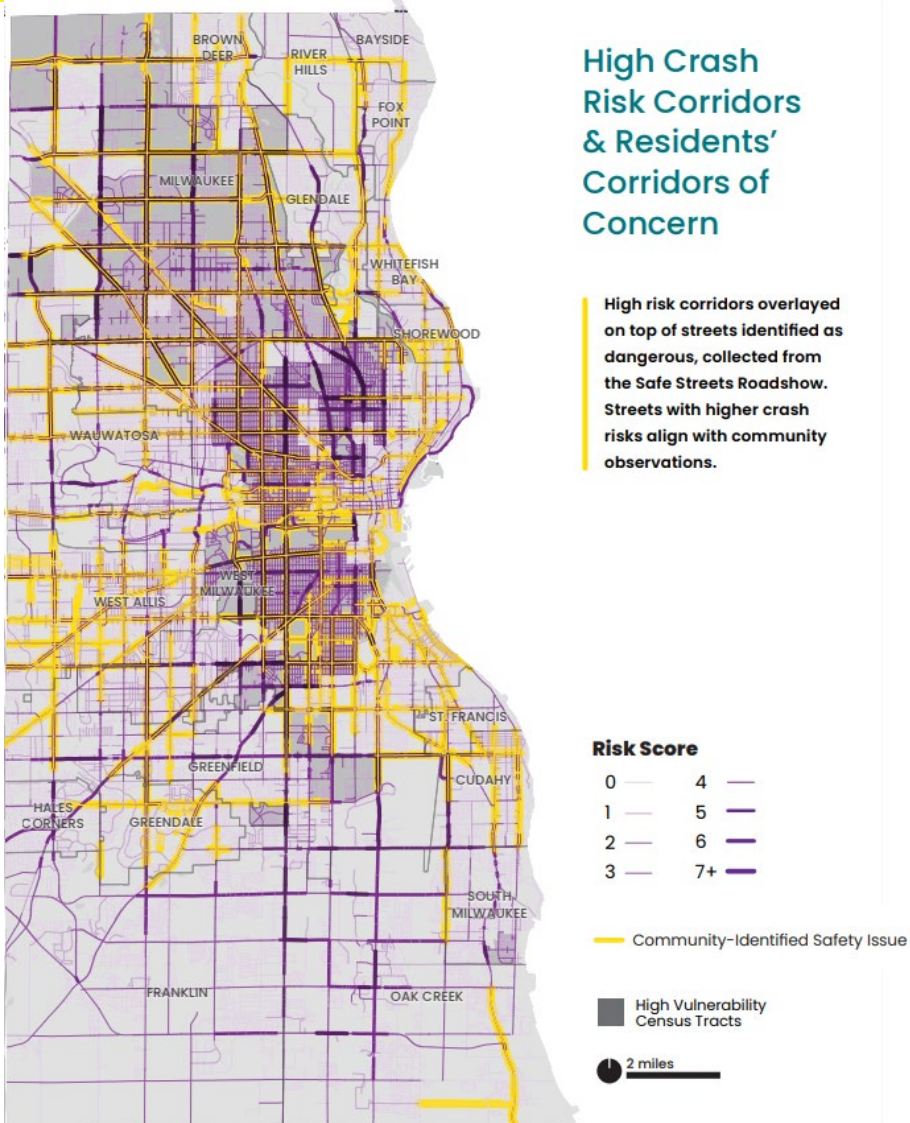


**Strategy & Project  
Selection**



**Progress &  
Transparency**

# Corridors of Concern + High Risk Network



- 27th St.
- 60th St.
- 76th St.
- 92nd St.
- 108th St.
- Capitol Dr.
- Fond du Lac Ave.
- Good Hope Rd.
- Green Bay Ave.
- Hampton Ave.
- Lake Dr.
- Layton Ave.
- Lincoln Ave.
- Mayfair Rd.
- Miller Park Way
- National Ave.
- North Ave.
- Port Washington Rd.
- Sherman Blvd.
- Silver Spring Dr.
- Teutonia Ave.

*(listed alphabetically)*



# Safer Streets Workshops



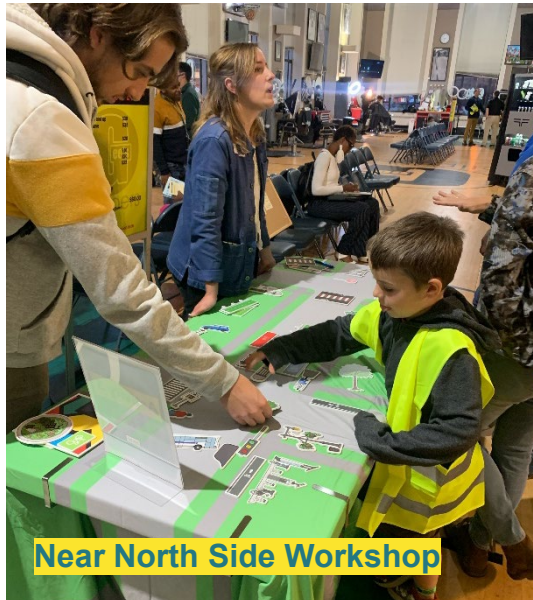
County Executive David Crowley at Southwest Side Workshop



Northwest Side Workshop



South Side Workshop



Near North Side Workshop

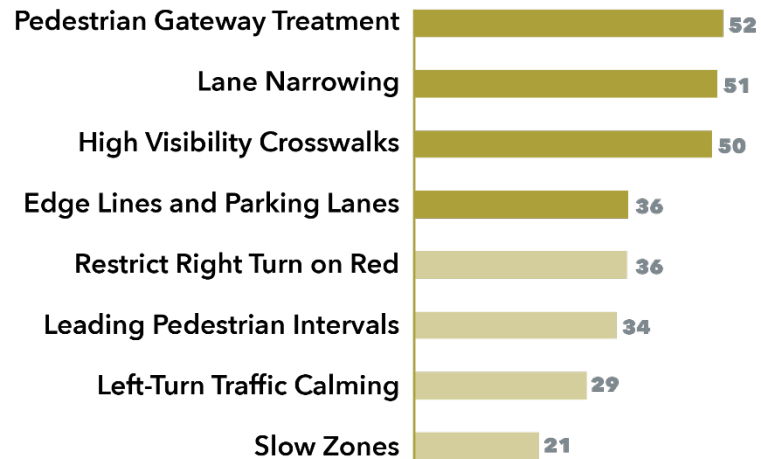


North Shore Workshop

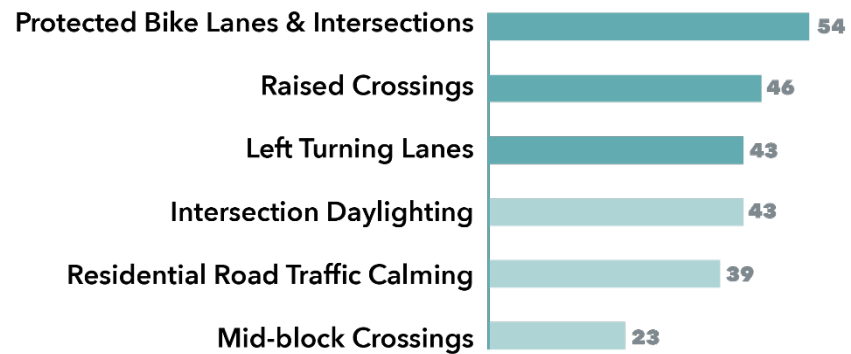
- 5 workshops
- 130+ workshop attendees

# Ranking the Safer Streets Toolkit

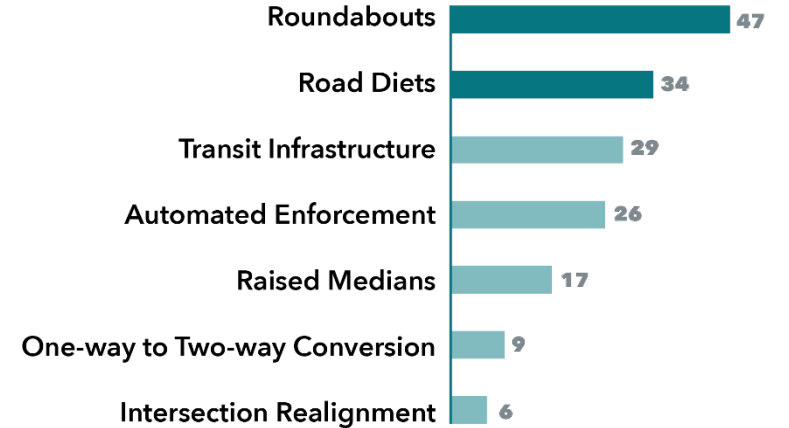
## LOW COST TOOLS



## MEDIUM COST TOOLS



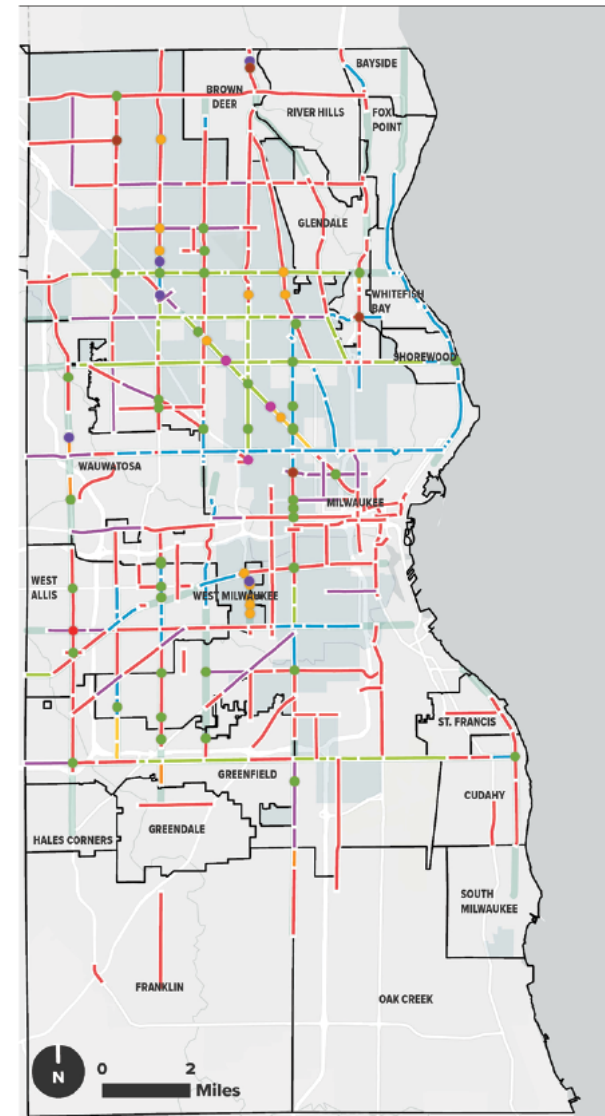
## HIGH COST TOOLS





# Safety Project Opportunities

- List of over 522 potential safety projects
- 142 higher-priority locations
- County will work with roadway owner and jurisdiction to support and advance project development



## Legend

- ▭ Municipal Boundaries
- ▬ Corridors of Concern
- ▭ Vulnerable Tracts

## Intersection Projects

- Traffic Calming & VRU Improvements
- Systemic Traffic Signal Improvements
- Reduced Left-Turn Conflict Intersection
- Geometric Realignment
- Multi-Lane Roundabout
- Single-Lane Roundabout

## Segment Projects

- ▬ Road Diet
- ▬ Road Diet & Access Management
- ▬ Traffic Calming & VRU Improvements
- ▬ VRU Improvements & Access Management
- ▬ Raised Median & Access Management
- ▬ Road Safety Audit & Improvements

# Corridor-Level Details: Data



### CORRIDOR OVERVIEW

**CAPITOL DRIVE**  
Between N. 124th Street and N. Lake Drive

**CORRIDOR LENGTH:** 9.7 miles  
Connects Waukesha and Milwaukee counties on the north side of Milwaukee

**ADJACENT MUNICIPALITIES:**  
Milwaukee, Wauwatosa, Shorewood

**COUNTY SUPERVISORY DISTRICTS:**  
5 (Sequanna Taylor), 6 (Shawn Rolland), 7 (Felesia A. Martin), 10 (Chainwoman Marcella Nicholson), 2 (Willie Johnson, Jr.), 13 (Priscilla E. Coggs-Jones), 1 (Anne O'Connor)

### CORRIDOR CONTEXT

**SIDEWALK PRESENCE:**  
Yes, both sides of the corridor

**MCTS BUS ROUTE(S) ON CORRIDOR:**  
RedLine - Capitol Drive

**BICYCLE FACILITIES:**  
On-street Painted Bike Lanes (Partial)

**BUBLR BIKESHARE STATIONS:**  
None

**EQUITY NEEDS:**  
Neighborhoods near Capitol Drive experience higher than average challenges in Transportation Cost Burden and Traffic Safety

### ROADWAY DESIGN

**FUNCTIONAL CLASS:**  
Principal Arterial

**MEDIAN PRESENCE:**  
Raised median (partial)

**NUMBER OF LANES:** 4 - 6

**POSTED SPEED:** 30-45 mph

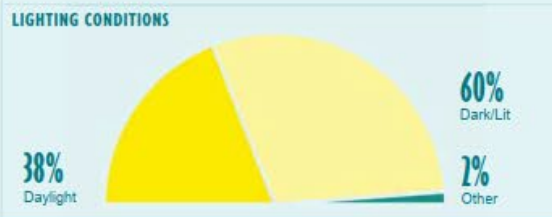
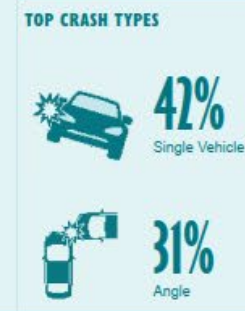
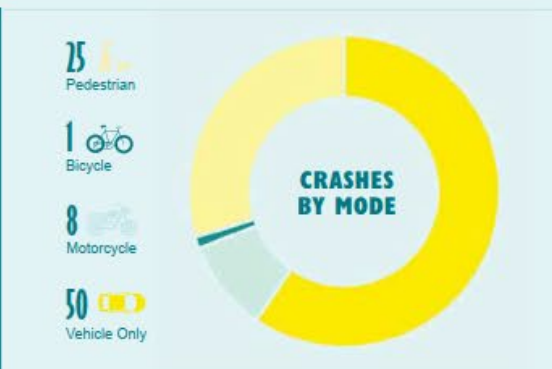
**TRAFFIC VOLUME:** 4,200-49,500 vehicles per day

**Legend:**  
 - Priority Intersections (Yellow diamond)  
 - Priority Segments (Yellow line)  
 - Supervisory Districts (Dashed line)  
 - Municipal Boundaries (Solid line)

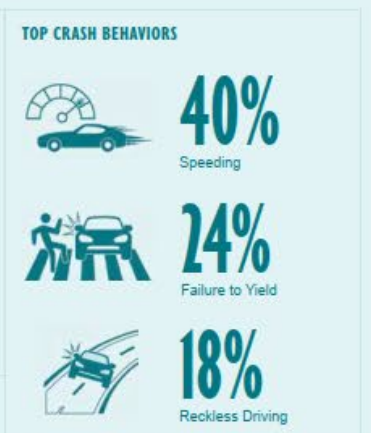
## CAPITOL DRIVE

**FATAL CRASHES**  
**15**

**SERIOUS INJURY CRASHES**  
**69**



## CRASH PATTERNS (2018-2022)



**MOST PREVALENT RISK FACTORS**

**High Traffic Volume & Proximity to Bus Stops**

# Corridor-Level Details: Projects



## Segment Projects

#	From	To	Safety Project Opportunities	Benefit-Cost Ratio	Length (mi)	Cost Estimate	FSI Crashes	Injury Crashes	Owner (s)	TIP #
1	Grantosa Dr.	76th St.	VRU Improvements and Access Management	26.3	1.79	\$ 1.8 M	8	108	WisDOT	
2*	76th St.	60th St.	VRU Improvements and Access Management	143.8	1.03	\$ 1 M	26	197	WisDOT	
3	60th St.	Sherman Blvd.	VRU Improvements and Access Management	88.1	1.00	\$ 1 M	16	259	WisDOT	
4*	Sherman Blvd.	Roosevelt Dr.	VRU Improvements and Access Management	95.1	0.48	\$ 475.8 K	5	109	WisDOT	
5	35th St.	27th St.	VRU Improvements and Access Management	104.5	0.51	\$ 509.1 K	12	157	WisDOT	
6*	27th St.	10th St.	VRU Improvements and Access Management	93.5	1.20	\$ 1.2 M	29	213	WisDOT	
7	10th St.	7th St.	Road Diet	106.0	0.19	\$ 153 K	1	39	WisDOT	
8*	7th St.	I-43	Road Diet	64.2	0.12	\$ 97.9 K	1	26	WisDOT	
9	I-43	2nd St.	Road Diet	17.2	0.26	\$ 210.2 K	1	14	WisDOT	
10	2nd St.	Humboldt Blvd.	VRU Improvements and Access Management	29.3	0.62	\$ 615.2 K	2	64	WisDOT	
11	Humboldt Blvd.	Oakland Ave.	VRU Improvements and Access Management	50.9	0.63	\$ 625.5 K	3	40	WisDOT	
12	Oakland Ave.	Maryland Ave.	Traffic Calming / VRU Improvements	31.6	0.25	\$ 125.3 K	1	16	WisDOT	

## Legend

- Municipal Boundary
  - Corridor of Concern
  - Vulnerable Tracts
- ### Intersection Projects
- Traffic Calming & VRU Improvements
  - Systemic Traffic Signal Improvements
  - Reduced Left-Turn Conflict Intersection
  - Geometric Realignment
  - Multi-Lane Roundabout
  - Single-Lane Roundabout
- ### Segment Projects
- Road Diet
  - Road Diet & Access Management
  - Traffic Calming & VRU Improvements
  - VRU Improvements & Access Management
  - Raised Median & Access Management
  - Road Safety Audit & Improvements

\*Indicates priority location



## Intersection Projects

#	Intersection	Safety Project Opportunities	Benefit-Cost Ratio	Cost Estimate	FSI Crashes	Injury Crashes	Owner (s)
1*	76th St.	Traffic Calming / VRU Improvements	5.5	\$ 250 K	2	25	WisDOT
2*	Appleton Ave.	Traffic Calming / VRU Improvements	14.1	\$ 250 K	2	23	WisDOT
3*	60th St.	Traffic Calming / VRU Improvements	31.6	\$ 250 K	5	32	City of Milwaukee, WisDOT
4	Sherman Blvd.	Systemic Traffic Signal Improvements	14.1	\$ 200 K	1	47	City of Milwaukee, WisDOT
5	35th St.	Geometric Realignment	2.4	\$ 3 M	2	32	WisDOT
6*	27th St.	Traffic Calming / VRU Improvements	15.8	\$ 250 K	9	40	City of Milwaukee, WisDOT
7	Teutonia Ave.	Traffic Calming / VRU Improvements	8.5	\$ 250 K	3	25	City of Milwaukee, WisDOT
8*	Lake Dr.	Traffic Calming / VRU Improvements	22.3	\$ 250 K	2	3	WisDOT

## Legend

- Municipal Boundary
  - Corridor of Concern
  - Vulnerable Tracts
- ### Intersection Projects
- Traffic Calming & VRU Improvements
  - Systemic Traffic Signal Improvements
  - Reduced Left-Turn Conflict Intersection
  - Geometric Realignment
  - Multi-Lane Roundabout
  - Single-Lane Roundabout
- ### Segment Projects
- Road Diet
  - Road Diet & Access Management
  - Traffic Calming & VRU Improvements
  - VRU Improvements & Access Management
  - Raised Median & Access Management
  - Road Safety Audit & Improvements

\*Indicates priority location



# Next Steps



- **Review Draft Action Plan (including Transportation & Transit Committee, PAC, SWG, SEWRPC, and WisDOT)**
- **Revise Draft Action Plan based on comments**
- **Full Board of Supervisors Review/Approval of Revised Draft**
- **Municipal-Level Action Plans (starting Spring 2025)**