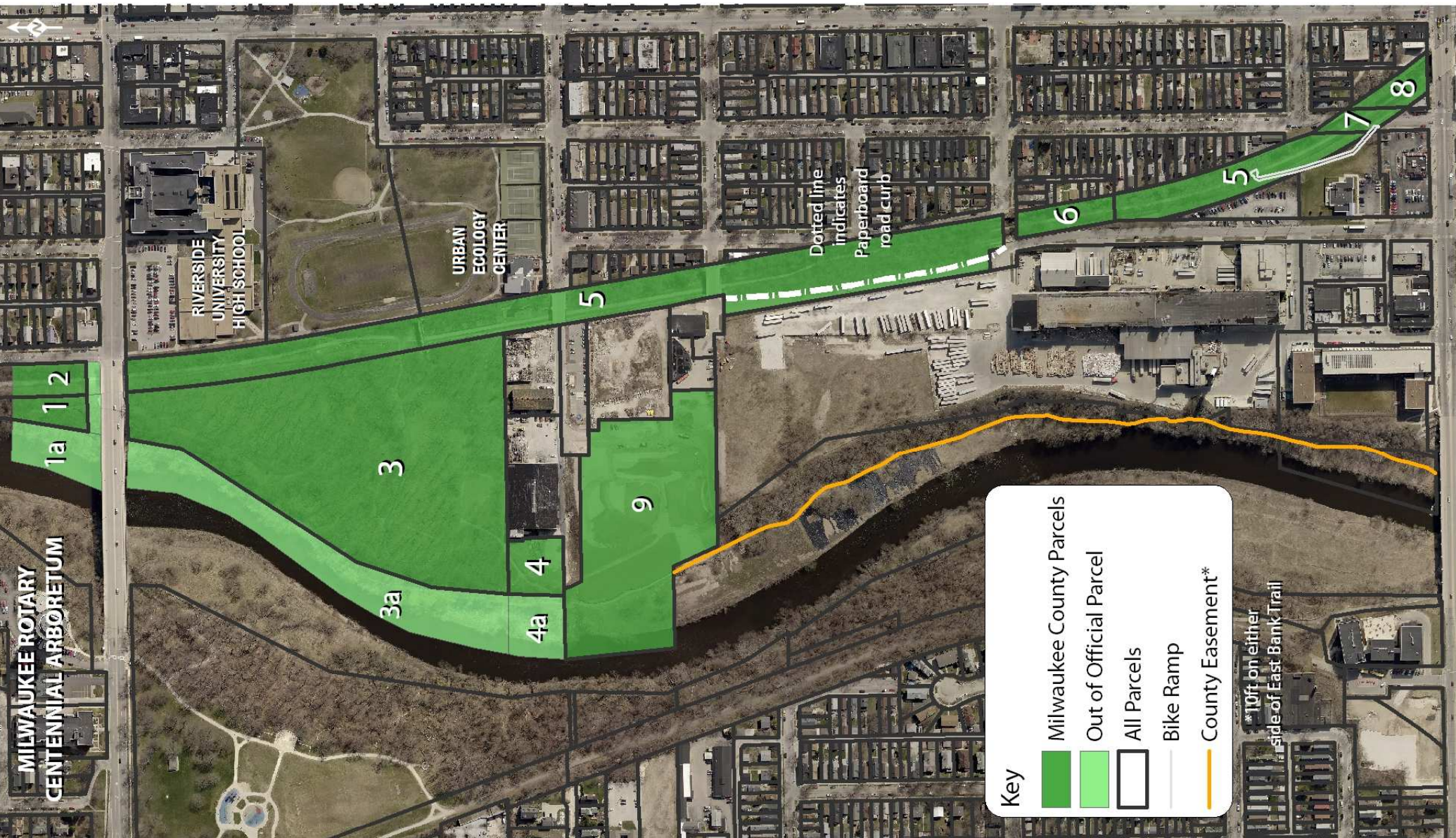


MILWAUKEE COUNTY PARCELS

- 1) Cambridge Woods
NORWALD PARK IN NE
1/4 SEC 16-7-22 LOTS 1 THRU 29
SD SUBD & LOT 1 W OF ROW
IN LOTS IN NE 1/4 SEC 16-7-22
(GOVT LOTS)
- 2) Bike Trail 260 ft North of
Locust St. Bridge
LOTS IN NE 1/4 SEC 16-7-22
(GOVT LOTS) GOV LOTS 1
TO 8 C & NW ROW THRU
GOV LOTS 1 TO 8 EXC THAT
PART LEASED IN LOT 6
- 3) Riverside Park
LOTS IN NE 1/4 SEC 16-7-22
(GOVT LOTS) PART GOV'T LOTS
5-6-7-8 BETW MILW RIVER-E
LOCUST ST BRIDGE- C & NW
RR ROW & AL 1 165.285' S OF
NLI GOV'T LOT 8
- 4) Small County Parcel West
of Riverland Buildings (former Godfrey)
LOTS IN NE 1/4 SEC 16-7-22
(GOVT LOTS) GOV LOT 8 BEG
ON S 1/4 SEC LI 619.15' W OF C &
NW RY ROW-TH N 98'-TH W
2.8'-TH N 23.5'-TH W 6.4'-TH N
44.05'-TH W TO RIVER-TH SLY
TO 1/4 SE CL1-THE TO BEG
- 5) From Locust St. Bridge South
to Bradford; then from south end
of Newhall Ln to Bartlett
LOTS IN SE 1/4 SEC 16-7-22
(GOVT LOTS) FORMER C &
NW RR ROW THRU GOV'T
LOTS 9-10-14-15 & 16 W OF
WLI N BARTLETT AV EXC
PART FOR STS & ELY 60' BLK
4 CASPER & HOFF'S SUBD NO
2 & ELY 160' SURVEY &
DIMENSION OF GOV'T LOT
11 & ELY 160' GOV'T LOT 12
W OF WLI N NEWHALL ST
EXC PART FOR ST
- 6) From E Bradford to South
End of N Newhall Ln
SUBD OF LOT 13 ETC (LARKIN'S)
IN SE 1/4 SEC 16-7-22 V 2 P 38
BLOCK 213 ROW THRU BLK
213 & PART OF VAC ST ADJ
- 7) Bartlett Ave Bridge Segment
LOTS IN SE 1/4 SEC 16-7-22
(GOVT LOTS) THAT PART OF
ROW RUNNING THRU SD
GOV'T LOTS 15 & 16 LYING
BETW E & W LINES OF N
BARTLETT AVE EXT'D N & S
- 8) Bartlett Ave Bridge
Segment to North Ave Bridge
LANDS IN SE 1/4 SEC 16-7-22
100' WIDE PARCEL OF LAND
EXT'L IN BARTLETT AVE
SELY TO N LI E NORTH AVE
- 9) RRF
CERTIFIED SURVEY MAP
NO 8501 IN SE 1/4 SEC 16-7-22 LOT 2



Key

- Milwaukee County Parcels
- Out of Official Parcel
- All Parcels
- Bike Ramp
- County Easement*

*10ft on either side of East Bank Trail