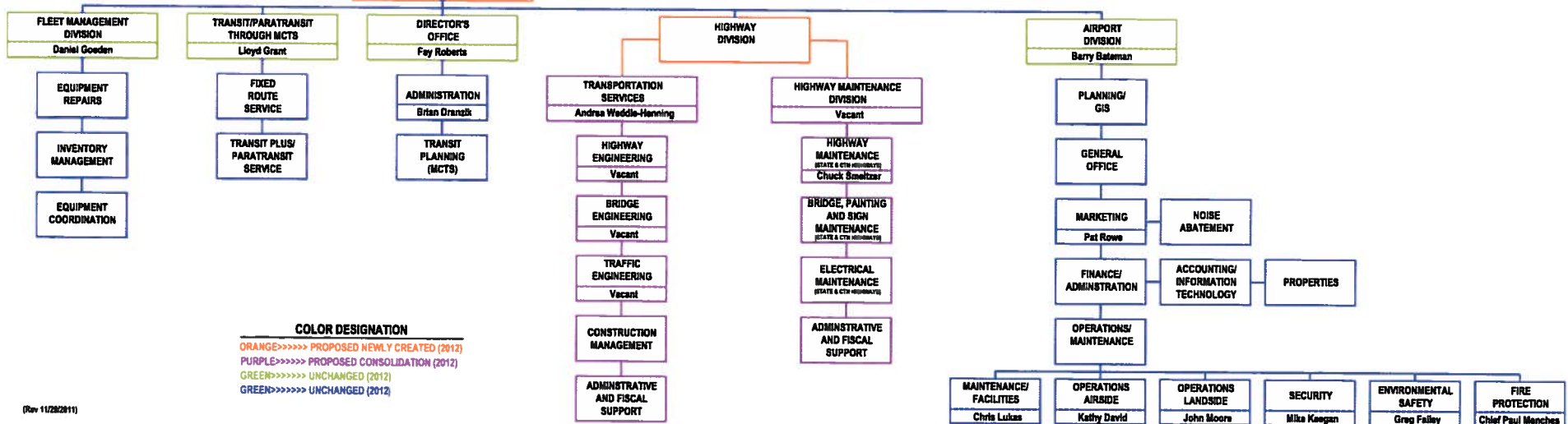


**PROPOSED  
2012**

**COUNTY  
EXECUTIVE  
CHRIS ABELE**

**DEPARTMENT OF  
TRANSPORTATION (DOT)  
FRANK BUSALACCHI**



**COLOR DESIGNATION**

ORANGE>>>>>> PROPOSED NEWLY CREATED (2012)

PURPLE>>>>>> PROPOSED CONSOLIDATION (2012)

GREEN>>>>>> UNCHANGED (2012)

GREEN>>>>>> UNCHANGED (2012)