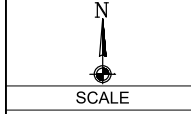


REVISIONS		
DATE	DESCRIPTION	INITIAL
2-3-2020	SPARE CONDUIT NOTE	DLK



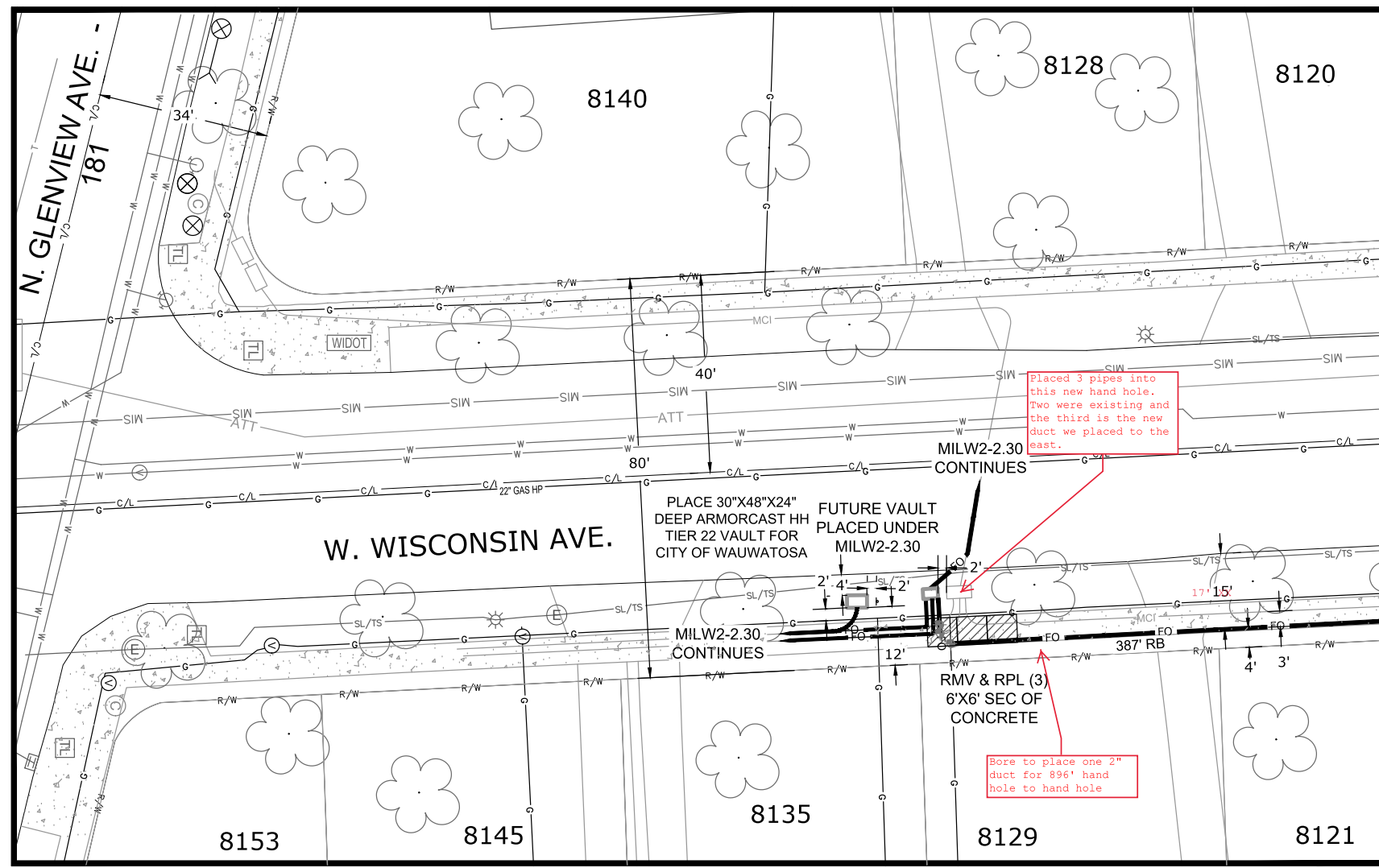
HORIZONTAL: 1"=20'

VERTICAL: 1"=20'

MP _____ TO MP _____

SHEET 2 OF 13

FILE: MIL22-27



Placed 3 pipes into this new hand hole. Two were existing and the third is the new duct we placed to the east.

Bore to place one 2" duct for 896' hand hole to hand hole

CONSTRUCTION NOTE:
 DAYLIGHT WHERE NECESSARY AND ADJUST DEPTH ACCORDINGLY

THE UTILITIES SHOWN ON THIS PLAN ARE INDICATED IN ACCORDANCE WITH AVAILABLE RECORDS. THE CONTRACTOR SHALL BE RESPONSIBLE FOR OBTAINING EXACT LOCATIONS AND ELEVATIONS OF ALL UTILITIES FROM THE OWNERS OF THE RESPECTIVE UTILITIES AND FROM FIELD VERIFICATION.

CONSTRUCTION NOTE:
 BURY CABLE AT A MINIMUM OF 36" DEPTH UNLESS OTHERWISE NOTED ON PRINTS.

EVERSTREAM PROPOSES TO BURY (1) FIBER COMMUNICATION CABLE IN A 2" CONDUIT & (1) SPARE 2" CONDUIT FOR CITY OF WAUWATOSA

LEGEND
 TB : TREE BORE(DIRECTIONAL BORE)
 RB : ROAD BORE (DIRECTIONAL BORE)
 T : TRENCH
 HD : HAND DIG
 P : PLOW

FO _____ FIBER CABLE

