



# Agricultural Leases 2026

Robert Senglaub, Contracts Manager, Milwaukee County Parks

FUN ● INCLUSIVE ● GREEN ● RESOURCEFUL ● YOUR BACKYARD

# Request:

---

- Milwaukee County Parks requests authorization to enter into Agricultural Lease Agreements and Amendments with individual farmers for the benefit of Milwaukee County land.



# Background

01

Milwaukee County Parks manages 708 acres of agricultural land for the purpose of growing and harvesting agricultural row-crops, vegetable crops, and hay.

02

The majority of these sites are located along the Oak Creek, Ryan Creek, and Root River and are prone to high water tables or seasonal flooding.

03

Keeping these lands in production deters invasive plant species from overtaking the land.

# Rates:

## Parcels greater than 15 acres

- County Resident: \$128 an acre
- Non-County Resident: \$133 an acre

## Parcels between 5 and 15 acres

- County Resident: \$118 an acre
- Non-County Resident: \$123 an acre

## Parcels less than 5 acres

- County Resident: \$108 an acre
- Non-County Resident: \$113 an acre




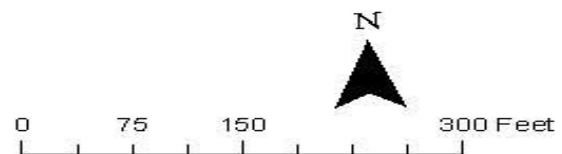
# Lessee and Terms:

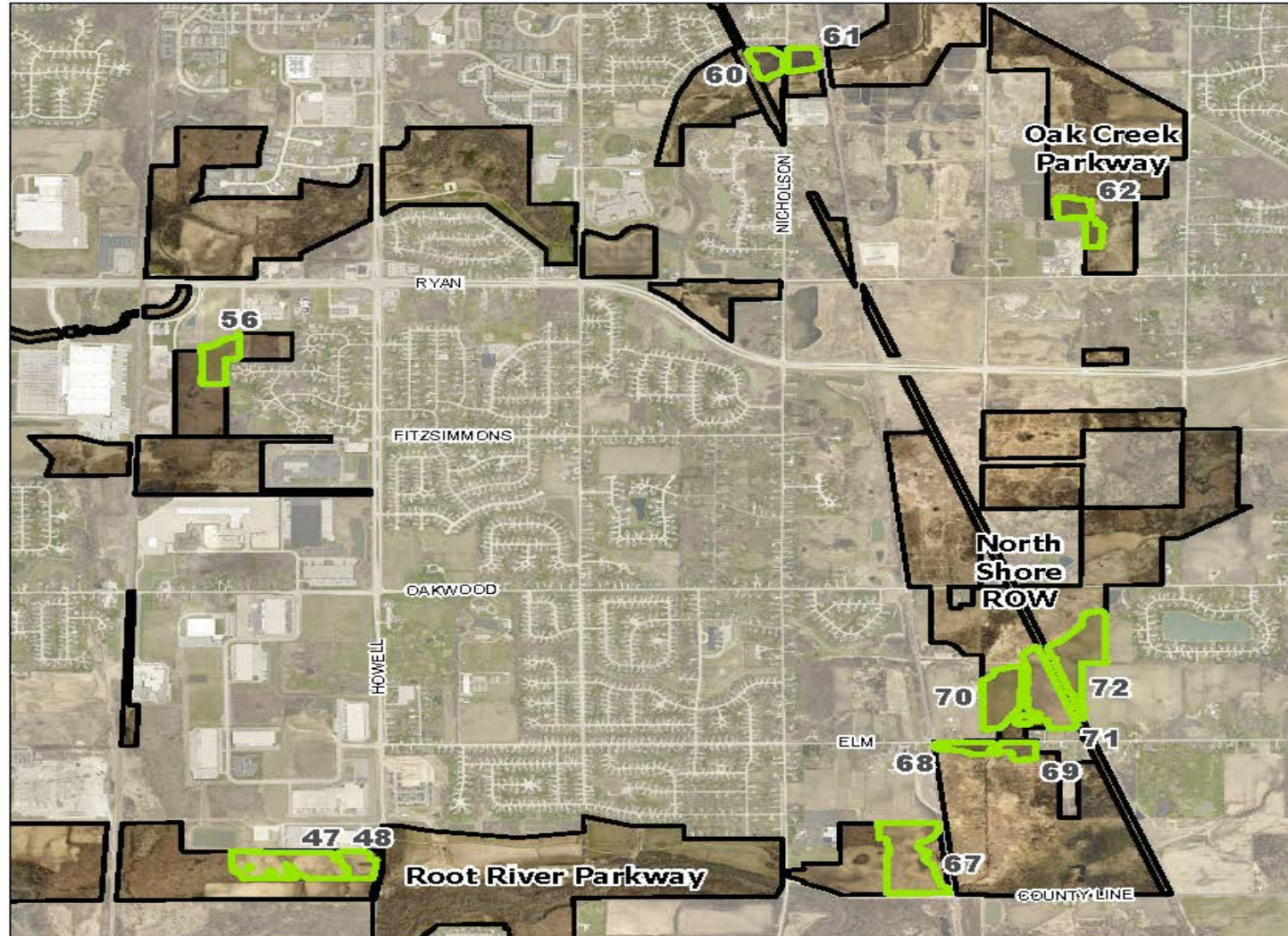
| <b><u>Lessee</u></b> | <b><u>Annual Rent</u></b> | <b><u>Acreage</u></b> | <b><u>Lease Term</u></b> |
|----------------------|---------------------------|-----------------------|--------------------------|
| • D&S Farms          | \$992.40                  | 8.41                  | 3 Years                  |
| • James Crayton      | \$10,545.6                | 96.8                  | 3 Years                  |



## Draft Exhibit A D&S Farms


 Agricultural Lease Land



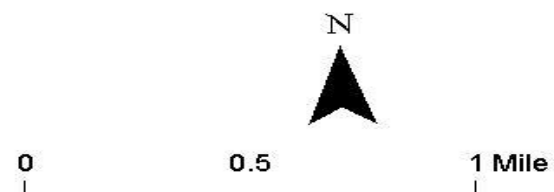


## Lease Area

 Park Boundary

 Agricultural Lease Land

| Site | Acres |
|------|-------|
| 47   | 14.1  |
| 48   | 4.2   |
| 56   | 6.4   |
| 60   | 4     |
| 61   | 3.4   |
| 62   | 5.7   |
| 67   | 17.3  |
| 68   | 2.6   |
| 69   | 2.8   |
| 70   | 10.3  |
| 71   | 12.3  |
| 72   | 14    |





# Questions?



FUN ● INCLUSIVE ● GREEN ● RESOURCEFUL ● YOUR BACKYARD