

The Center for Forensic Science and Protective Medicine



**MILWAUKEE
COUNTY**

Vision for the CFSPM

- Building on the Milwaukee Regional Medical Center Campus.
 - 3-story, approx. 200,000 SF facility
 - Milwaukee County occupies roughly 108,000 SF
- Houses ME, OEM, and State Crime Lab.
 - Milwaukee County Office of the Medical Examiner
 - Small lease space for Versiti
 - Milwaukee County Office of Emergency Management
 - State of Wisconsin Department of Justice Milwaukee Crime Lab
- Purpose-built facility constructed to meet the unique but shared structural and security needs of Milwaukee County and the State.
- The CFSPM would be at the forefront of technology, located on a renowned regional medical/trauma/emergency campus whose development was spurred by the County decades ago, and will benefit from BRT connectivity.



Why the Center for Forensic Science and Protective Medicine?

- 10 prior reference files in the County Legislative Information Center.
- The County Medical Examiner (ME) risks loss of accreditation without a facilities plan.
- The Office of Emergency Management (OEM) would benefit from consolidate facilities and collaborative partnerships and has its own facility issues.
- Jointly address needs in an economically efficient manner, while becoming a national leader in forensic science and public protective services.
- 2016, Public (Wisconsin) Policy Forum report “Breaking New Ground?” addressed potential collaboration in addressing the County’s needs. ([View.ashx \(legistar.com\)](#))

The construction and operation of such a facility could save money; open up new training opportunities and increase the pipeline of forensic specialists; facilitate collaboration and communication that improve the quality of operations and advance criminal justice investigations and testimony; support the development and validation of new scientific methodologies; and spur significant research opportunities.





BREAKING NEW GROUND?

ANALYZING THE POTENTIAL FOR A
PUBLIC-PRIVATE FORENSIC SCIENCE
CENTER IN SOUTHEAST WISCONSIN



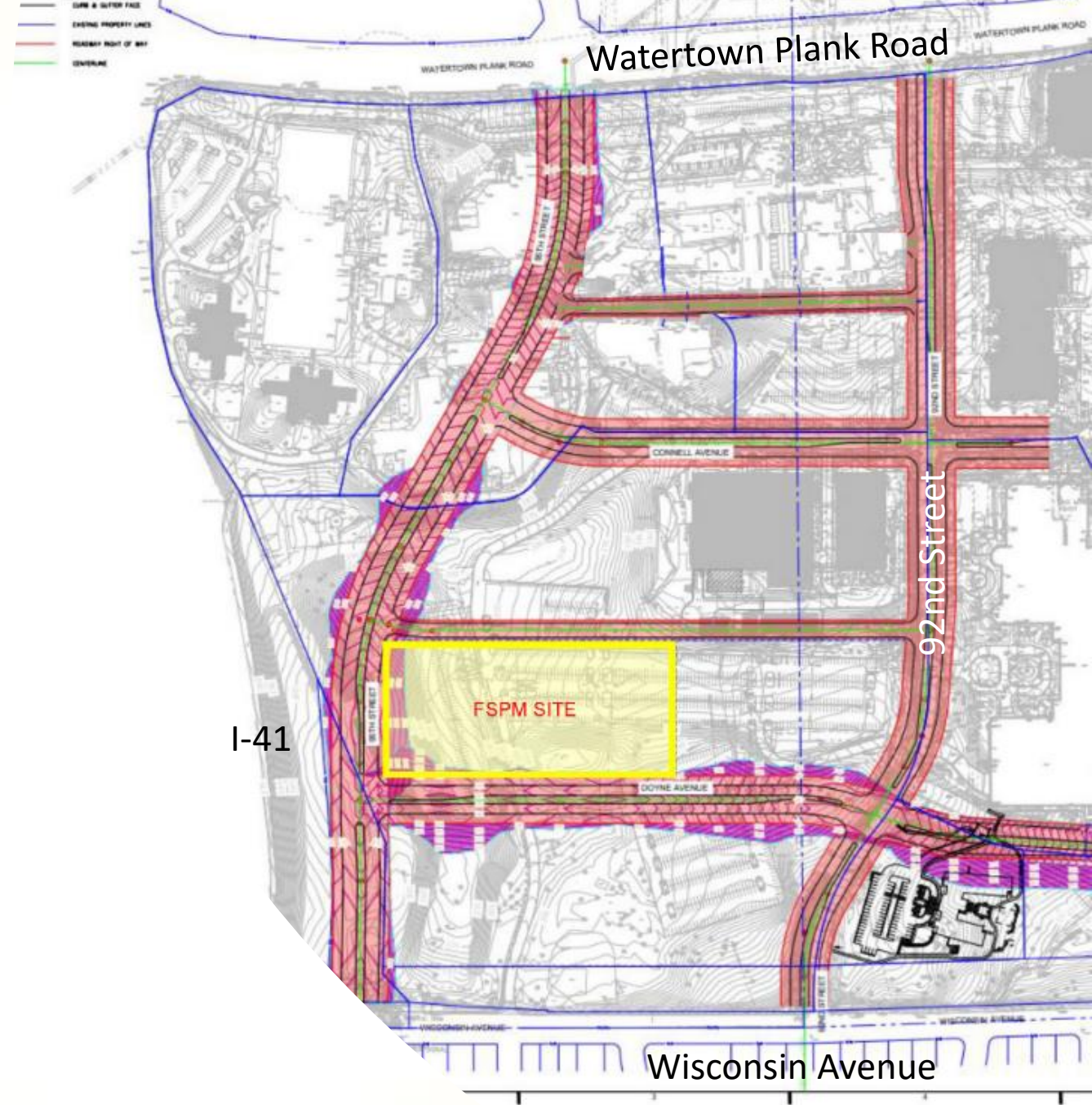
PUBLIC POLICY FORUM

Why a shared facility?

- Save money in site preparation, construction and operations
- Increase training and development opportunities for forensic specialists and EMS professionals.
- Attract and retain highly specialized and sought-after talent.
- Facilitate collaboration to improve the quality of operations and advance criminal justice investigations and testimony
- Spur research opportunities
- Facilitate disaster preparedness & crisis response

CFSPM Location

- SE Quadrant of Milwaukee County Grounds
- 6 acres reserved during prior MRMC land transactions
- Proximate to MCW, Froedtert, Children's Wisconsin, Versiti





Concept Rendering from HGA

OEM & ME Space

Dedicated OEM space	911 center, radio services, EMS, offices	
Dedicated ME space	Autopsy, forensics, labs, offices	
Shared space	Conference, training, and break rooms	
Garage space	Sallyport, radio services,	
Total rentable SF	Approx.	108,000 SF

Notes:

- OEM space includes allocation for future public service answering point consolidation.
- ME space includes laboratory and autopsy space for County and contracted needs. Contract fees will be part of the funding strategy.
- Space planning is on-going to identifying efficiencies, shared opportunities, and cost reductions.



Project Budget

	Cost	Notes
Unit A –Milwaukee County’s share of building costs: Includes soft costs, site work building shell, and parking	\$63,597,624	Contracted
Milwaukee County’s Tenant Improvements	\$37,194,454	Contracted
Milwaukee County’s Furniture, Fixture, and Equipment and Project Management	\$26,315,015	County Managed
Total Project Costs	\$127,107,093	



Note: Space planning is on-going to identifying efficiencies, shared opportunities, and cost reductions

Project Funding

	Amount	Notes
2019 Capital Allocation	\$940,262	Design Funds – Currently Spending
2020 Capital Budget Allocation	\$11,191,328	Allocated Capital
2021 Capital Budget Allocation	\$3,016,216	Allocated Capital
2022 ARPA Request	\$20,000,000	Current Request
Total	\$34,207,544	Does not include Design Funds from 2019

Note: A funding gap of \$93M remains.



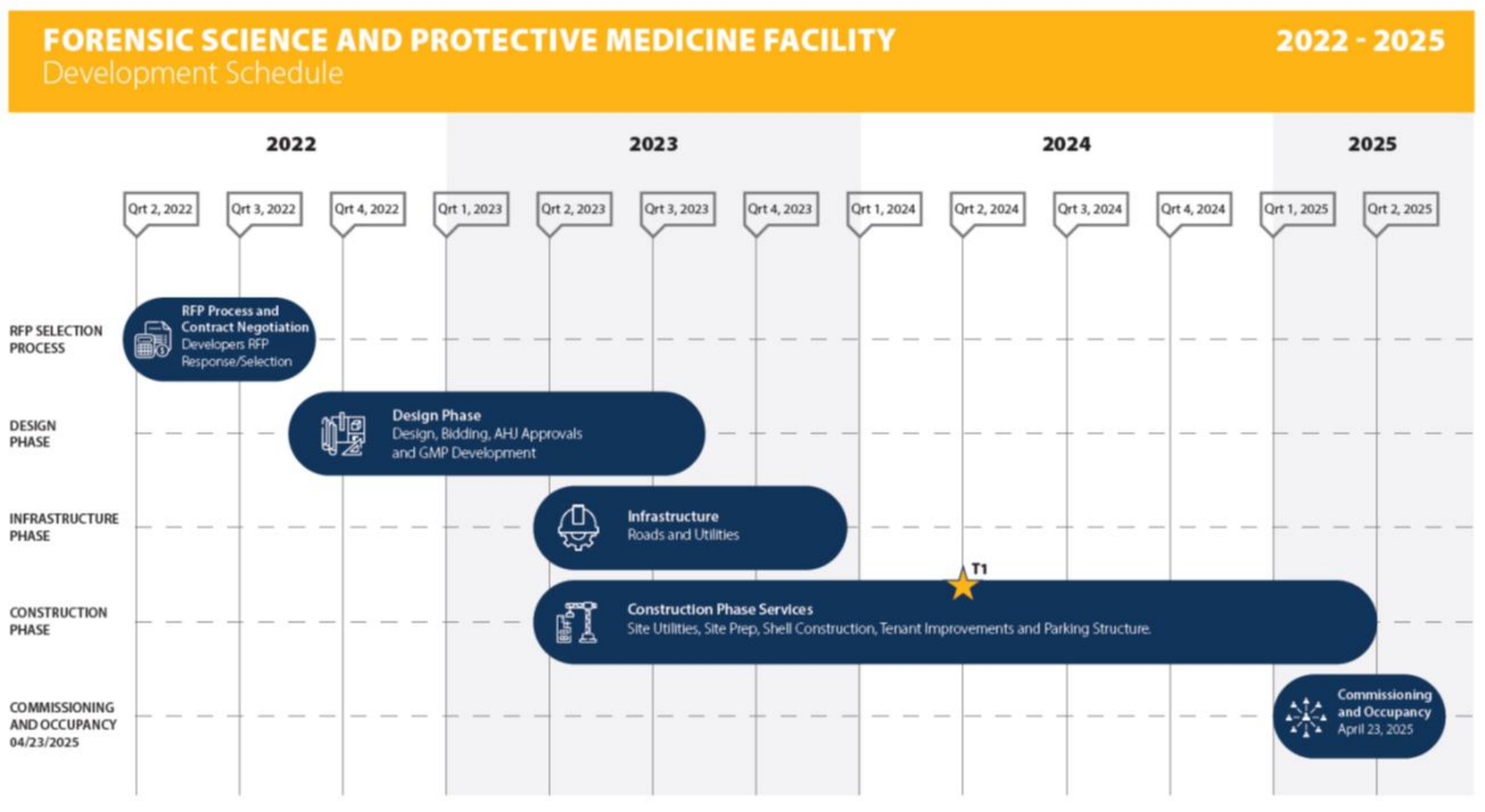
Staff actively seeking additional opportunities to offset project costs: additional capital allocations, partner contributions, increase in medical examination fees, on-site parking revenues, sub-lease, use of reserves, and cost reduction opportunities.

Deal Structure

- County and State each enter a Purchase and Sale Agreement to Acquire their condo within the building.
- County and State jointly make up the Condo Association.
 - Condo Agreements and By-laws
 - Land Lease (w/MCW, no base fee)
- State has committed \$99.5M for their condo, pending finalization of their deal documents.



Development Schedule



Alignment to Strategic Plan

- Breaking down silos:
 - Medical Examiner & Emergency Management
 - State of Wisconsin Milwaukee Crime Lab
 - Adjacent MRMC Partners
- Addressing health equity:
 - Enhanced emergency preparedness and response
 - Opportunities for research, analysis, & education/training
- Increase minority & women-owned business contract
 - Community benefit contracting goals



A recommendation to allocate \$20M of ARPA funds
for the planned purchase of a purpose-built Center for
Forensic Science & Protective Medicine



**MILWAUKEE
COUNTY**