

COUNTY OF MILWAUKEE COUNTY
INTEROFFICE COMMUNICATION

DATE: December 28, 2011

TO: Lee Holloway, Chairman, County Board of Supervisors
Michael Mayo Sr., Chairman, Transportation, Public Works & Transit Committee

FROM: Frank Busalacchi, Acting Director of Transportation

SUBJECT: Organizational Chart for Newly Created Milwaukee County Department of Transportation-
Informational Report

POLICY

County Board approved a newly created “Department of Transportation” in the 2012 budget; this will replace the existing Department of Transportation and Public Works.

BACKGROUND

In December 2011, it was requested by the Transportation, Public Works and Transit Standing Committee that the newly formed Department of Transportation, provide an organizational chart, detailing the structure of divisions and staff, moving forward as of January 2012. Not included in this organizational chart is the Facilities Management and Architecture and Engineering and Environmental Services (AE & ES) divisions, of which will report directly to the Department of Administrative Services. The Department of Administrative Services (DAS) will be providing a report identifying the newly acquired divisions and their roles within DAS.

The information attached, identifies the divisions remaining within the “Department of Transportation” and identifies “SCOPE” and “ROLES & RESPONSIBILITIES” of each area.

Report Prepared by: Fay Roberts, Assistant Director

Approved by:



Frank Busalacchi, Acting Director
Department of Transportation

Attachments

DIRECTOR'S OFFICE

SCOPE

Responsible for management and support services to the newly created Department of Transportation divisions through oversight, coordination and technical assistance at the Director's level within the Divisions.

ROLES AND RESPONSIBILITIES

The Director's Office is responsible for the overall management of all of the divisions and sections within Department of Transportation. The specific roles deal with administrative functions and transportation planning. The administrative functions include establishment and implementation of department wide policies and procedures, monitoring compliance of regulatory and mandated state and federal requirements of other governmental agencies, personnel administration, accounting, liability, safety policies, annual training and coordination of consistency of policy within the department.

The Department of Administrative Services – Fiscal Affairs provides budgeting functions and prepares and verifies year-end totals for the next fiscal cycle. One of the new initiatives will be to focus one position within the transportation area to seek "Grant Funds" for all Department of Transportation areas and to centralize fiscal roles within the newly created Highway Division.

The newly created Highway Division combines two divisions (transportation engineering and highway maintenance). A review of current fiscal roles will begin January 2012. This initiative will allow for a reorganization of this area to ensure that we reduce duplication where applicable, and create a more effective and efficient fiscal operation with the merged divisions. The first step will be that, effective January 1, 2012, the fiscal manager located out at Highway will be brought to work in the Director's Office to assist in the review of the fiscal roles of the two divisions.

Fiscal focus will be on development of written procedures, which will assist in applying for application of state and federal funds, and create an audit trail to ensure that proper application has occurred for CHIP (known now as CHID), STP, and other funds for Milwaukee County roadway. The new processes will be tracked utilizing the new On-Base software, which has been introduced to Milwaukee County. Implementation of On-Base application and Contract manager will create an ability to track project deadlines, expenditures and workflow. The new initiative will begin with all 2012 projects for the newly created Highway Division.

Transportation Planning provides technical and professional expertise for multimodal and transit planning and coordination, with Milwaukee County Transit System. This Section identifies, applies for and manages state and federal grant funds that reduce tax level support for County transportation project. The current model is in review and will serve as an initiative, to determine a more efficient and effective way of doing business that benefits Milwaukee County.

The review of the process will be a joint effort on the part of MTS Inc. and Milwaukee County Transportation Planning Section.

Newly created Department of Transportation (DOT) includes

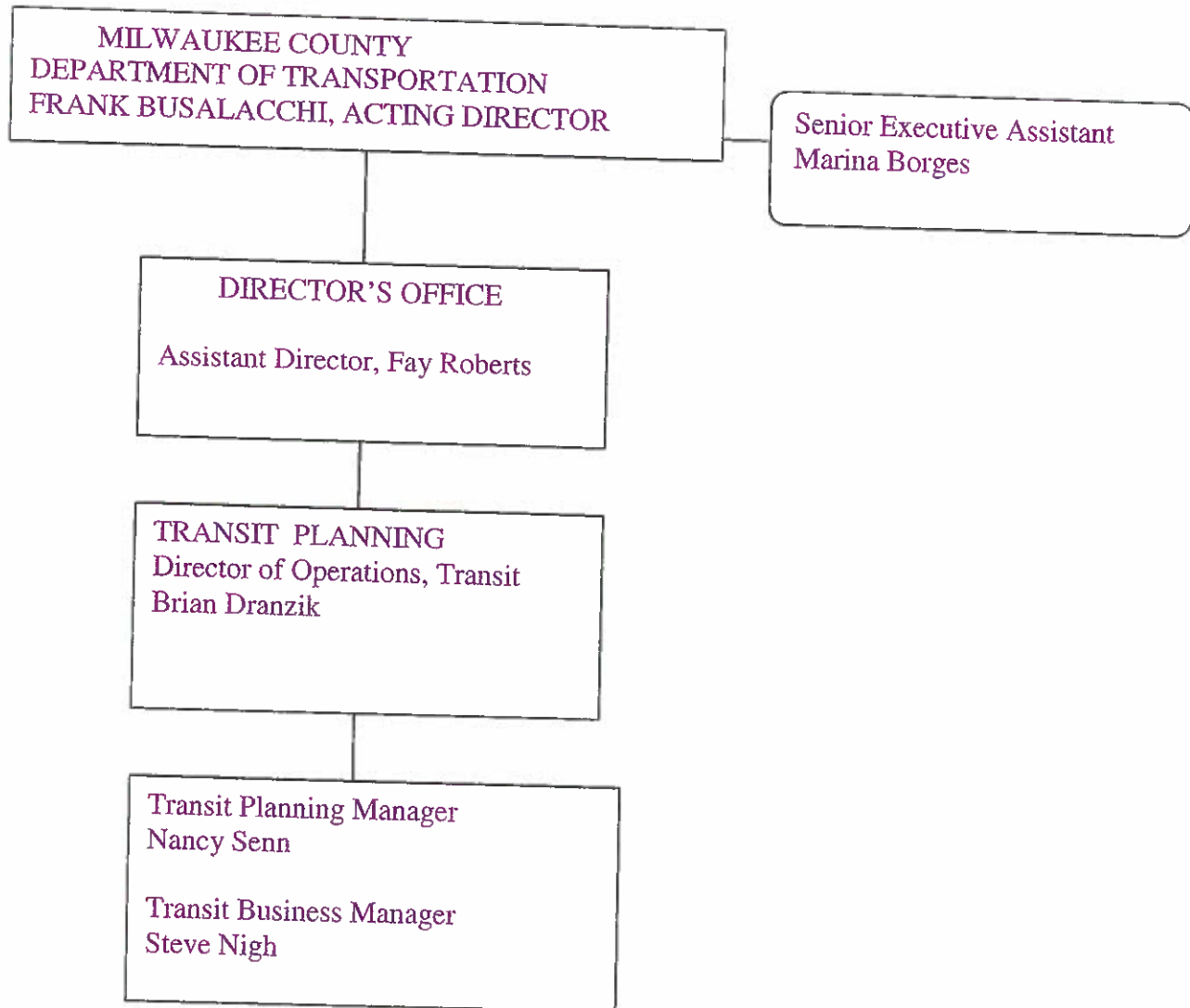
- Director's Office
- Airport Division
- Fleet Division
- Highway Division – Transportation Section and Highway Section
- Milwaukee County Transit System/Paratransit

OBJECTIVE

The newly created “Department of Transportation” will require a transitional period to allow the department to review all the responsibilities and roles to ensure efficiency and reduction of duplication where possible. These changes will require some personnel actions in the 2012 budget year to ensure that we have the proper classification to allow the department to deliver expertise and efficiency to Milwaukee County. The first step has been initiated by relocating the DAS fiscal staff person into the Director's Office to assist with the reorganization of the fiscal section in the transportation section and highway section to create one fiscal component for the newly created Highway Division. With the two divisions merging we will need to restructure the fiscal components since their funding sources vary.

This will be the first order of business to ensure that the department moves forward into the project season with the ability to track expenditures and to develop the 5-year plan for projects within Milwaukee County for the 2013 budget year through 2018.

5801-DIRECTOR'S OFFICE



NEWLY CREATED HIGHWAY DIVISION

SCOPE

Coordinates with outside agencies such as Wisconsin Department of Transportation (WISDOT), Southeastern Wisconsin Regional Planning Commission (SEWRPC), Wisconsin Department of Natural Resources (WDNR) and other local units of government as it relates to the newly created Highway Division, which will include the Transportation Engineering Section and the Highway Maintenance Section.

ROLES & RESPONSIBILITIES

Highway Division is under the jurisdiction of the newly created Department of Transportation. The division manages all activities necessary for the efficient, day-to-day operation of Milwaukee County state trunk highways and roadways. In order to provide and monitor the various roles, the sections are divided into the following areas of responsibilities:

Transportation/Highway Section will be joined in the fiscal overview and where applicable utilizing the expertise of both the engineering, and maintenance disciplines to combine the service of both sections to become a more productive efficient and effective running division.

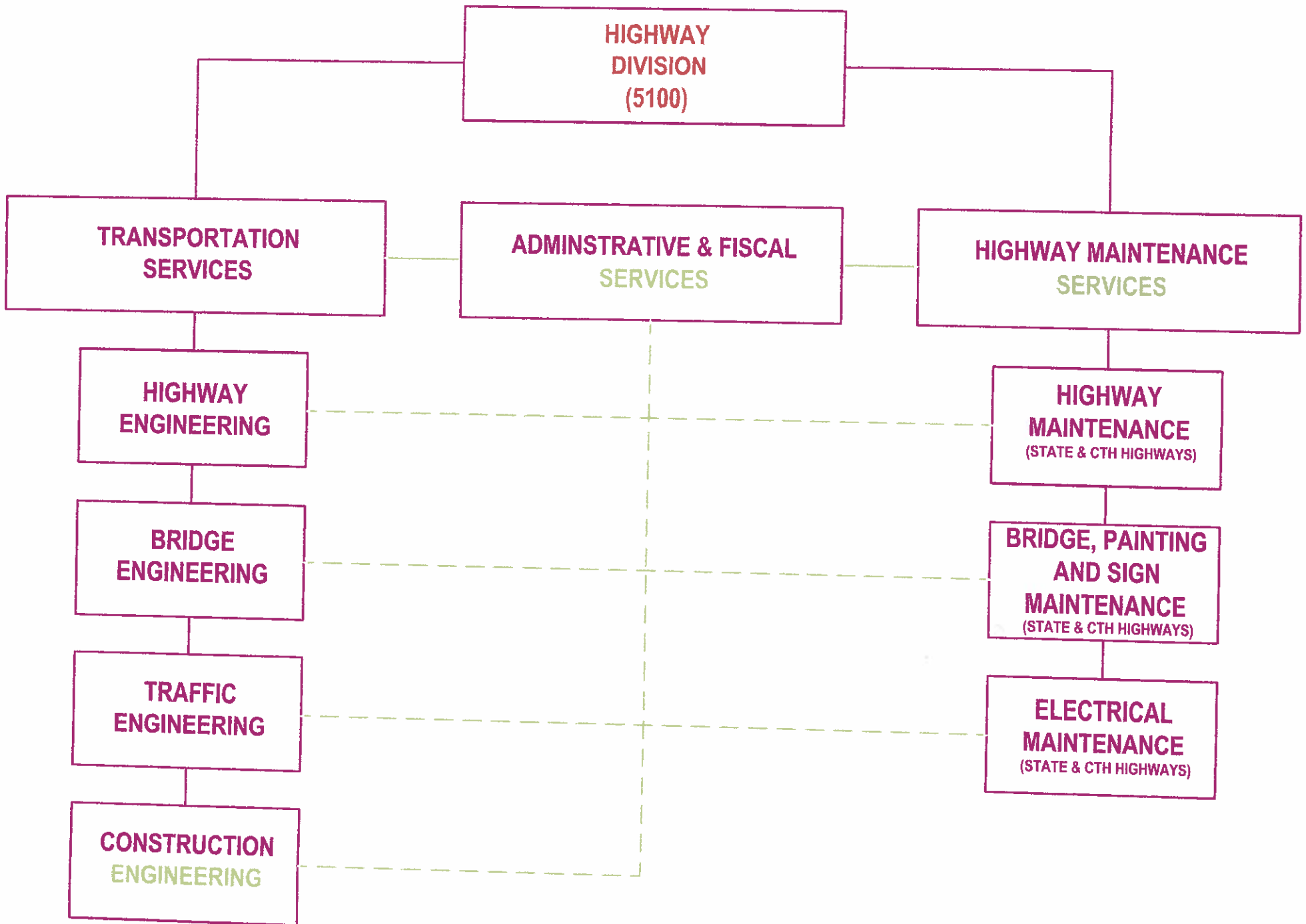
Both positions will report directly to the Director of Transportation Office during the development of this new Highway Division. There will be some personnel changes to allow the department to create positions to fit within the newly created Highway Division for 2012. Every effort will be made to maintain the personnel costs with those that are budgeted.

Fiscal – the Transportation Engineering Section and the Highway Maintenance Section are both similar in that they deal with the maintenance of the Milwaukee County, roadway system in Milwaukee County. This would include new engineering aspects of construction, reconstructs, design; traffic signals construction schedules and structural issues (bridges) within Milwaukee County.

The goal for 2012 includes assessment of the current conditions of the roadways and establishment of a 5-year plan to ensure the integrity of the roadway in Milwaukee County. This will include a point of view from engineering as well as highway maintenance as a joint initiative.

To include both perspectives, the fiscal manager from the existing highway division has been relocated into the Director's Office to assist with the development of a more efficient process to monitor funds in the newly created "Highway Division". The relocation will be effective

January 1, 2012, during the development of this initiative, the fiscal person will report to the Director's Office until a review is completed and the reorganization is completed.



HIGHWAY DIVISION

Highway Maintenance Section

SCOPE

The Highway Maintenance Division maintains the safety and integrity of the County Trunk Highway System and Interstate system throughout Milwaukee County. The services performed by this division include rehabilitation projects, maintenance of safety barriers, shoulder repairs, and snow and ice control. The division performs 85% of its work for the State of Wisconsin Department of Transportation. Highway Maintenance contracts over 120 vendors totaling \$1.5 million dollars. The Highway Maintenance Division purchases a large number of commodities such as road salt, asphalt, and materials for road maintenance.

ROLE & RESPONSIBILITIES

Highway Section is under the jurisdiction of the newly created Department of Transportation and is part of the "Highway Division". The division manages all activities necessary for the efficient, day-to-day operation of Milwaukee County state trunk highways and roadways. In order to provide and monitor the various roles, the sections are divided into the following areas of responsibilities.

State Highway Maintenance provides general and winter maintenance on the expressways and state trunk highways within Milwaukee County. The state reimbursement for this program is based on actual labor, including incidental labor costs, machinery allowances as specified in the current Wisconsin Highway Maintenance Manual's actual cost provision, and material purchases authorized by the Wisconsin Department of Transportation. All costs related to state highway maintenance are 100% offset by state reimbursement revenue.

County Highway Maintenance provides general and winter maintenance on the Milwaukee County highway system. This includes pavement repair and resurfacing, shoulder maintenance, vegetation control, safety appurtenances, road drainage, litter pickup, bridge maintenance, snow and ice control, traffic signal maintenance, highway signing and pavement marking.

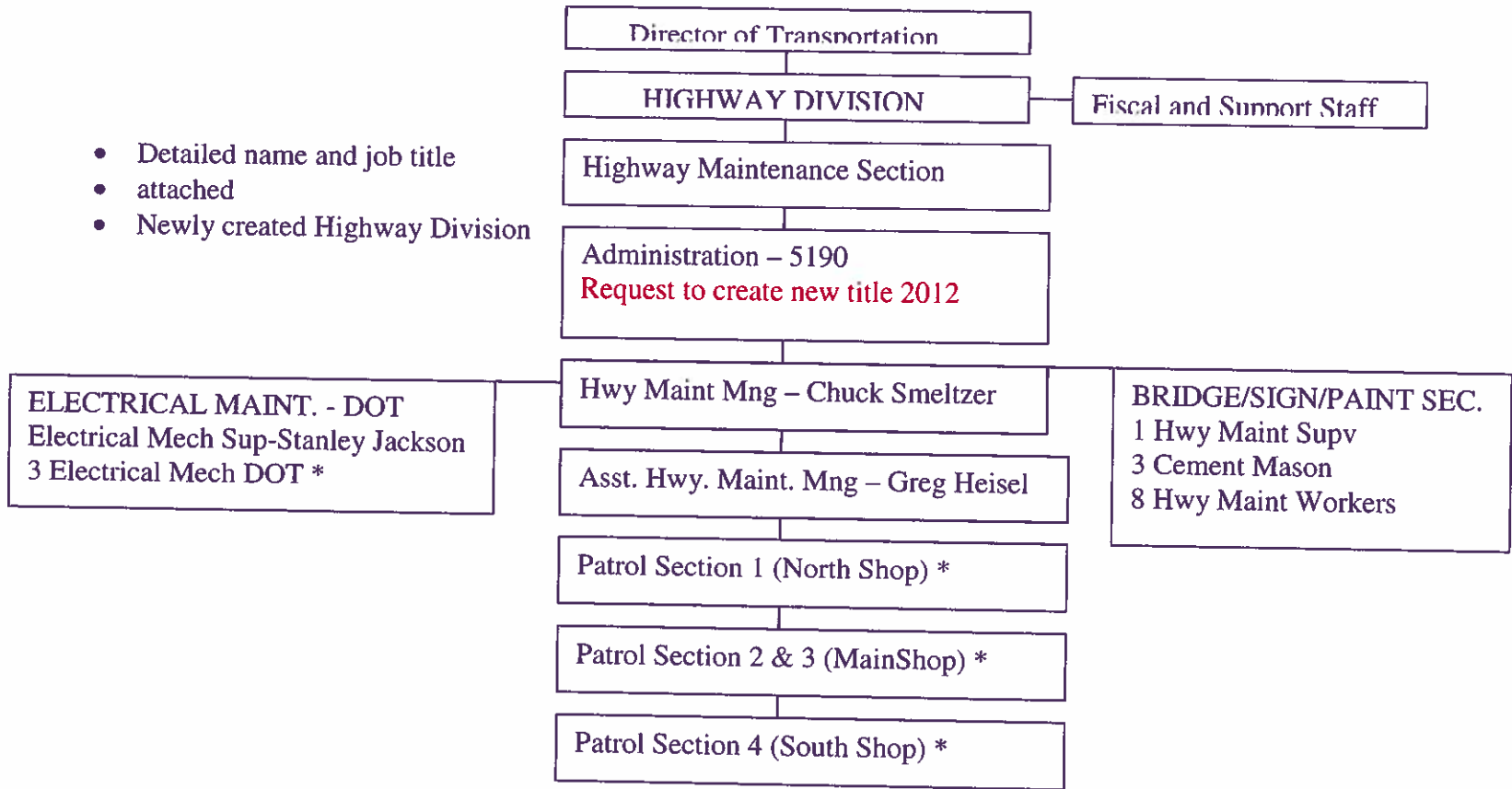
Highway Administration provides overall management to the Division. This includes insuring compliance with safety requirements, county, state and federal regulations and coordination of all phases of state and expressway maintenance operations with the Wisconsin Department of Transportation.

Fiscal is being reviewed to determine which staff will remain physically at the Highway Section location and which of the fiscal staff would better be served in the main office. Effective January 1, 2012 the fiscal manager will be located in the Director's Office to be a part of the review of the consolidation of the two divisions into one. The initiative will be to develop a more effective and efficient fiscal model for the division. At the conclusion of this review a recommendation will be made regarding location of fiscal staff.

Staff and Budget

The Highway Maintenance Division has 117.6 FTE with revenues of \$17,278,509 expenditures of \$17,914,526 and tax levy of \$ 636,017. Tax levy supports the various stretches of roadway that make up the County Trunk Highway system. While the division lists 117.6 FTE, 15 of these FTE positions are classified as temporary assignments and 15 are classified as the hybrid positions of Parks/Highway Maintenance Workers. These positions are hired from November to late March to assist in snow plowing operations on an as needed basis. The majority of staff in the division are maintenance workers who work on rehabilitation projects or snow removal. Over the past ten years, the number of full-time positions has decreased as hiring of temporary assignment classified positions has increased.

- Detailed name and job title
- attached
- Newly created Highway Division



HWY

Hi Org	5100
--------	------

Count of Name				
Low Org	Title	Name	Total	
5110	Asst Hiway Mtce Supv	Dawonn Averhart	1	
	Highway Mtce Supv	Derwin Pottinger	1	
	Highway Mtce Wkr 3	Anthony Elam	Anthony Elam	1
		Anthony Minter	Anthony Minter	1
		Bobby Blain	Bobby Blain	1
		Brandon Johnson	Brandon Johnson	1
		Brandon Wolf	Brandon Wolf	1
		Donald Raasch	Donald Raasch	1
		Gerald Exford	Gerald Exford	1
		Ian Badzinski	Ian Badzinski	1
		Kelly Herald	Kelly Herald	1
		Kelly Mattox	Kelly Mattox	1
		Lamonte Allen	Lamonte Allen	1
		Michael Hunter	Michael Hunter	1
		Nicholas Marchewka	Nicholas Marchewka	1
		Oscar Berrios	Oscar Berrios	1
		Oscar Rush	Oscar Rush	1
		Peter Olsen	Peter Olsen	1
		Thomas Panizza	Thomas Panizza	1
		William Luzinski	William Luzinski	1
		Billy Flanagan - TA	Billy Flanagan - TA	1
		Cary Matzen - TA	Cary Matzen - TA	1
	Dennis Johnson - TA	Dennis Johnson - TA	1	
	Dwayne Mc Kay - TA	Dwayne Mc Kay - TA	1	
	Frederick Woolridge - TA	Frederick Woolridge - TA	1	
	Tyrone Simmons - TA	Tyrone Simmons - TA	1	
	Parks/Highway Maint Worker	Danny Owings	Danny Owings	1
		Dante Holt	Dante Holt	1
		John Nickel	John Nickel	1
5110 Total			29	
5120	Asst Hiway Mtce Supv	Scott Schweitzer	1	
	Highway Mtce Supv	Richard Jurewicz	1	
	Highway Mtce Wkr 3	Charles Mitchell	Charles Mitchell	1
		Christopher Urbaniak	Christopher Urbaniak	1
		Debra Kliner	Debra Kliner	1
		Edward Owczarek	Edward Owczarek	1
		Gregory Kowalski	Gregory Kowalski	1
		Jake Reinke	Jake Reinke	1
		John Martin	John Martin	1
		John Toth	John Toth	1
		Jordan Wenzel	Jordan Wenzel	1
		Kerry Walker	Kerry Walker	1
		Michael Grochowski	Michael Grochowski	1
		Scott Gendreau	Scott Gendreau	1
		Timothy Antoniewicz	Timothy Antoniewicz	1
		Douglas Tersen - TA	Douglas Tersen - TA	1
		Michael Luedtke - TA	Michael Luedtke - TA	1
Michael Reed - TA	Michael Reed - TA	1		

	5120	Parks/Highway Maint Worker	Dena Kaap	1
			Laurence Hope	1
5120 Total				20
	5140	Asst Hiway Mtce Supv	Thomas Pritzlaff	1
		Highway Mtce Supv	Brian Gundrum	1
		Highway Mtce Wkr 3	Ante Pelicarić	1
			Blaine Bukowski	1
			Brian Navarro	1
			Christ Wenzel	1
			David Heller	1
			David Sweeney	1
			Duwayne Jurkiewicz	1
			James Jensen	1
			Jeffrey Corstvet	1
			Jeffrey Jankowski	1
			John Millane	1
			Joshua Bargar	1
			Juan Balderas	1
			Kenneth Wilk	1
			Kurt Steininger	1
			Lawrence Tobolski	1
			Lester Bentson	1
			Mark Kolodzinski	1
			Michael Lenz	1
			Scott Grobschmidt	1
			Todd Peterson	1
			George Medrek - TA	1
			Jerome Laack - TA	1
			Joel McCann - TA	1
			John Shaffer - TA	1
			Jose Rodriguez - TA	1
			Quentin Averhart - TA	1
			Richard Brandt - TA	1
			Robert Durski - TA	1
			Robert Zieman - TA	1
			Terrance Peterson - TA	1
		Parks/Highway Maint Worker	Daryl Janicek	1
			James Podlesnik	1
			Keith Vrchota	1
			Terry Hass	1
			Thomas Sudol	1
5140 Total				38
	5150	Cement Mason	Donald Reichartz	1
			Edward Colwell	1
			William Spence	1
		Highway Mtce Supv	Beth Liban	1
		Highway Mtce Wkr 3	Antonio Rivera	1
			Mario Munoz	1
			Victor Bautista	1
5150 Total				7
	5155	Highway Mtce Wkr 3	Clyde Taylor	1
			Jose Ponce	1

5155 Total			2
5160	Asst Hiway Mtce Supv	Kevin Kent	1
	Highway Mtce Supv	Douglas Davis	1
	Highway Mtce Wkr 3	Aaron Higgs	1
		Bobby Dufault	1
		Brian Koukol	1
		Derwin Pottinger	1
		Frank Alioto	1
		Frank Ptasienski	1
		Gary Piontek	1
		John Vozar	1
		Jon Misko	1
		Mark Roeglin	1
		Mark Zdarstek	1
		Matthew Schoenherr	1
		Ronald Rouse	1
		Ryan McDonnell	1
		Alvin Rodriguez - TA	1
		Donald Stueck - TA	1
		Isidro Montes - TA	1
		John Manka - TA	1
Perry Olive - TA	1		
Robert Zinda - TA	1		
Tyler Koehn - TA	1		
Parks/Highway Maint Worker	David Lewis	1	
	Peter Segatti	1	
5160 Total			25
5171	Electrical Mech	Jeffrey Gary	1
		John Stoker	1
	Electrical Mech Suphiwa	Stanley Jackson	1
5171 Total			3
5190	Asst Hiway Maint Mgr	Gregory Heisel	1
	Clerical Asst 2 Nr	Jennifer Anderson	1
	Dispatch Clerk Seas	Donald Wittmann	1
	Fiscal Analyst	Patricia Carravetta	1
	Fiscal Asst 2	Janet Holytz	1
	Highway Mtce Mgr	Charles Smeltzer	1
5190 Total			6
Grand Total			130

HIGHWAY DIVISION

TRANSPORTATION SECTION

SCOPE

Coordinates with outside agencies such as Wisconsin Department of Transportation (WISDOT), Southeastern Wisconsin Regional Planning Commission (SEWRPC), Wisconsin Department of Natural Resources (WDNR) and other local units of government. Participates in regional meetings and reviews related to current and future transportation projects.

ROLES & RESPONSIBILITIES

Transportation Section is under the jurisdiction of the newly created Department of Transportation within the "Highway Division". The division manages all activities necessary for the efficient, day-to-day operation of Milwaukee County state trunk highways and roadways. In order to provide and monitor the various roles, the sections are divided into the following areas of responsibilities.

Transportation Section provides engineering services for Milwaukee County: Highway Engineering, Bridge Engineering, Traffic Engineering, and Construction Engineering.

Highway Engineering provides planning, design, and pavement management activities for highway capital improvement projects Surface Transportation Program (STP) projects, Transportation Enhancements (TE), and Local Roads Improvement projects (LRIP) as required by law. Obtains funding and cost sharing initiatives for Highway Engineering projects for both design and construction, typically with 80% or 50% Federal cost participation. Provides support to Bridge Engineering, Traffic Engineering and Construction Engineering.

Bridge Engineering provides planning, design, bridge management and construction oversight of bridge/structure rehabilitation and replacement of existing County-owned bridges. As mandated by state law, Bridge Engineering conducts and oversees biennial bridge inspections of all County-owned bridges and administers the Local Bridge Program for all municipality-owned bridges in Milwaukee County. Obtains funding for Bridge Engineering projects for both design and construction, typically with 80% Federal cost participation. Provides support for other departments associated to bridges and structures.

Traffic Engineering provides planning, design, and implementation of projects needed to maintain and improve the safety, operational efficiency and functional integrity of our CTH system, including projects in Congestion Mitigation and Air Quality Program (CMAQ) and Highway Safety Improvement Program (CHIP). Obtains funding and cost sharing initiatives for Traffic Engineering projects for both design and construction, typically between 80% or 90% Federal cost participating. Maintains traffic signs and traffic signal inventories and maps.

Administers and inspects utility permits and oversized load permits on our CTH system for work performed within Milwaukee County right of way.

Construction Engineering provides field inspection, quality control, construction management, construction recordkeeping, contract administration and final acceptances of construction projects developed in Highway Engineering, Bridge Engineering and Traffic Engineering. Funding for Construction Engineering is obtained from Highway Engineering, Bridge Engineering and Traffic Engineering, typically with 50% to 90% Federal cost participation.

Fiscal is being reviewed to determine which staff will be relocated physically from the Highway Section location and which of the fiscal staff would better be served in the main office which is in the Director's Office. Effective January 1, 2012 the fiscal manager will be located in the Director's Office to be a part of the review of the consolidation of the two divisions into one. The initiative will be to develop a more effective and efficient fiscal model for the division. At the conclusion of this review a recommendation will be made regarding location of fiscal staff. A work group has been formulated which consists of the two DAS fiscal staff, engineer and a representative from the Director's Office.

Staff

The Section is actively seeking to fill several engineering positions to assist with the county's role in the Zoo Interchange Road Project and the inspection of the critical infrastructure within Milwaukee County that has a State and Federal mandate to assess the infrastructure in our area.

TRANSPORTATION SERVICES

*Transportation Manager Design & Construction
Andrea Weddle-Henning, P.E. (TACH)

HIGHWAY ENGINEERING

*Resident Contract Manager-Highway Design
Andrea Weddle-Henning, P.E.

Engineer
Joe Wleczorek, P.E.

*Engineer

**Vacant

Engineering Technician
**Vacant

BRIDGE ENGINEERING

Resident Contract Manager-Bridges/Structures
**Vacant

TRAFFIC ENGINEERING

Managing Engineer-Traffic Engineering & Construction
**Vacant

Engineer
Dan Murphy, E.I.T.

Transportation and Highway Supervisor
Keith Kent

CONSTRUCTION MANAGEMENT ENGINEERING

Managing Engineer-Construction
David Shkhan, P.E.

ABBREVIATIONS

P.E. - Professional Engineer (licensed)

E.I.T.- Engineer-In-Training (pre-P.E.)

TACH- Temporary Assignment to a Higher Classification

NOTE: All Job titles above in 'RED' are vacant positions and suggested changes in 'GREEN'.

*Andrea Weddle-Henning is temporarily (TACH) in the Transportation Manager Design & Construction position.
Andrea Weddle-Henning, P.E. permanent position is Resident Contract Manager-Highway Design.
Andrea Weddle-Henning once held the Engineer position in Highway Design that is currently vacant.

**The Engineer position has been vacant for about 8 months.
The Engineer Technician position has been vacant for over a year.
The Resident Contract Manager-Bridges & Structures position has been vacant for over a year.
The Resident Contract Manager-Traffic Engineering & Construction position has been vacant for about a month.

AIRPORT DIVISION

SCOPE

Airport Division ensures compliance with all regulatory and governmental agencies regarding the day-to-day operation of General Mitchell International Airport and Lawrence Timmerman Airport under the direction of Milwaukee County, Department of Transportation and for the citizens of Milwaukee County.

ROLES & RESPONSIBILITIES

GMIA and Lawrence J. Timmerman Field are under the jurisdiction of the newly created Department of Transportation. The division manages all activities necessary for the efficient, day-to-day operation of General Mitchell International Airport and Lawrence J. Timmerman Field. In order to provide and monitor the various roles, the sections are divided into the following areas of responsibilities.

Administration is responsible for general administration, planning, accounting, payroll, budget, procurement of airside and landside business development and operations. Administration of the noise mitigation program and ongoing noise monitoring and abatement activities is also handled in this section.

Parking Operations records the various expenses of operating the parking structure, debt service and associated interested expense on the parking structure addition. This group also oversees all GMIA ground transportation activities including taxi, shuttle, limousine and off-airport operators providing services to and from GMIA. Parking event fees are collected and accounted for by this section.

Maintenance is responsible for keeping the airfield and ramp areas open for business at all times as well as the Airport's structures and grounds. This includes custodial, skilled trade services as well as snow plowing and grass cutting

Environmental and Safety is responsible for activities related to work place safety, compliance with governmental safety requirements, glycol recovery programs and wastewater treatment programs.

Airside Operation This area oversees the day-to-day activities of the airport and ensures compliance with Federal Aviation Administration (FA), and state and local regulations. This section coordinates emergency responses, construction activities, special events and snow removal.

Landside Operations oversees day-to-day terminal operations. This section addresses passenger safety issues and coordinates terminal construction activities, special events, snow removal (on the roadway) and signage issues This section ensures that ground transportation operators are

properly licensed and are in compliance with the standards set forth in Milwaukee County General Ordinances.

Fire Protection maintains round the clock firefighters to deal with emergency situations on the airfield and within the terminal, parking structure and parking lots. This section responds to emergency needs involving patrons, tenants and airport staff.

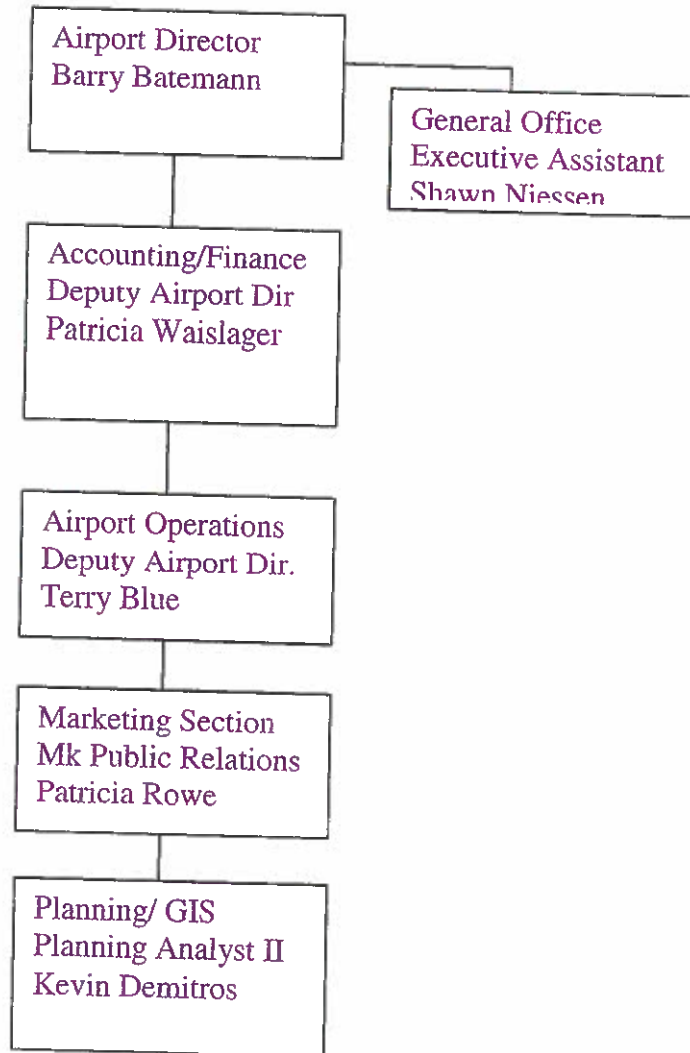
Safety & Security is responsible for the safety and security functions within the airfield perimeters, working closely with other agencies and taking necessary actions to keep the Airport in compliance with FAA and TSA standards and regulations.

440th Air Force Base. The cost center is charged with the rental of existing buildings for aviation and business purposes and maintains the buildings and property with the intent to rent out the area

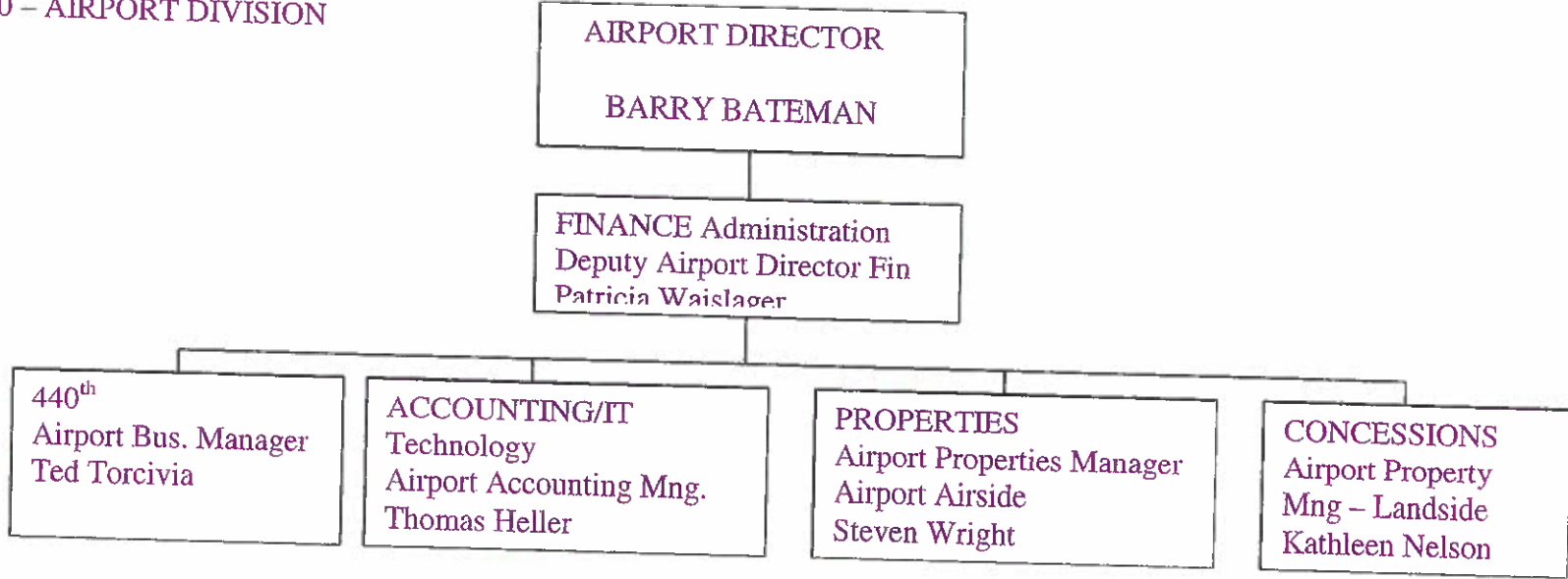
Timmerman (Lawrence J Timmerman Airport) located on the northwest side of Milwaukee, is the generation aviation reliever airport in the County's airport system. Revenues and expenditures associated with the operation of LJT are covered by the terms of the signatory airline long-term lease.

Staff employed as Milwaukee County employees is 251 in various classifications (see attached)

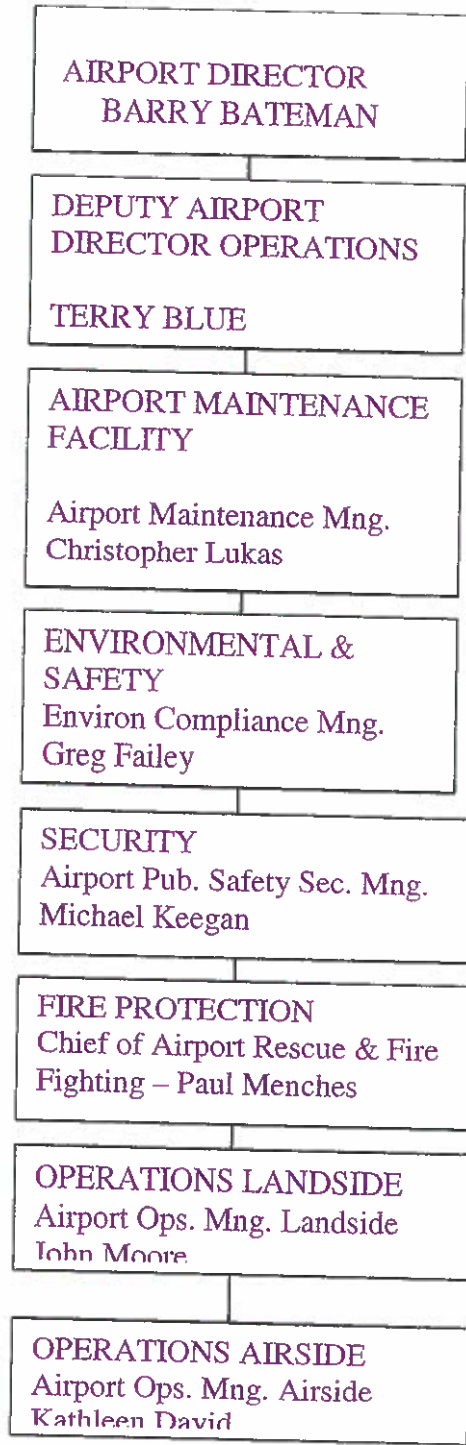
5040 – AIRPORT DIVISION



5040 – AIRPORT DIVISION



5040 – AIRPORT DIVISION



Airport

Hi Org	5040
--------	------

Count of Name		
Title	Name	Total
Accountant 2	Lynda Shearn	1
	Nancy Kufahl	1
Accountant 3	Collette Anderson	1
	David Lehmann	1
	Steven Bernstein	1
Accountant 4-NR	Stanley Dyett	1
	William Lethlean	1
Accting Manager Airport	Thomas Heller	1
Airport Business Mgr	Ted Torcivia	1
Airport Cont Ctr Op	Jeffrey Ulrich	1
	Jennifer Kaiser	1
	Jennifer Tremmel	1
	Scott Schuh	1
	Shaun Nadolny	1
	Stephen Adams	1
Airport Enviro Compl Mg	Gregory Failey	1
Airport Intern	Monet Mayo	1
	Timothy Debord	1
Airport Mtce Mgr	Christopher Lukas	1
Airport Mtce Wkr	Brandon Urbaniak	1
	Brian Garratt	1
	Bryan Groshek	1
	Christopher Benjamin	1
	Clayborn Beamon	1
	Damien Van Dusen	1
	David Biedenbender	1
	David Dolkiewicz	1
	David Sweeney	1
	Dennis Wimpie	1
	Douglas Felde	1
	Dushon Wilson	1
	Fred Jackson	1
	Howard Campbell	1
	James Abrams	1
	James Best	1
	Jan Lautzenhiser	1
	Janet Rasmussen	1
	Jason Koehlert	1
	Jason Skowronski	1
	Jerry Blalock	1
	Jesus Rivera Alejandro	1
	John Sprague	1
	Lula Borden	1
	Mark Anastasi	1
	Mark Grochowski	1
	Mary Powell	1
Matthew Lietha	1	
Matthew Wines	1	

Airport Mtce Wkr	Michael Karolewicz	1
	Nicholas Gnas	1
	Peter Kafura	1
	Rahsaan Gibson	1
	Randolph Mifko	1
	Raphael Ramos	1
	Richard Brys	1
	Ruben Angeles	1
	Sandra Carney	1
	Scott Buckner	1
	Scott Toro	1
	Scott Wargolet	1
	Sean Tourtillott	1
	Steven Drummond	1
	Steven Patrick	1
	Todd Pare	1
	Tyrone Ellis	1
	Weldon Calvin	1
	William Otero	1
	Xica Robinson	1
	Colin Stahovic - TA	1
	David DeBiasse - TA	1
	James Meidam - TA	1
	John Angeli - TA	1
	Jose Borges - TA	1
Lawrence Bongard - TA	1	
Mark Bublitz - TA	1	
Robert Lewandowski - TA	1	
Sandra Springer - TA	1	
Stephen Rauth - TA	1	
Airport Mtce Wkr Asst	Aide CANO	1
	Amicar Zapata	1
	Barbara Volm	1
	Carolyn Baldwin	1
	Charles Johnson	1
	Cory Champion	1
	Debbie Strickland	1
	Deborah Foti	1
	Debra Henley	1
	Donnell Wilson	1
	Harold Woosypiti	1
	Helen Riley	1
	Irene Brenton	1
	James Bronk	1
	Jerry Lor	1
	John Brooks	1
	John Fisher	1
	Joyce Cole	1
	Juanita Lopez	1
	Judson Derzay	1
	Karen Echols	1
	Kevin Wasemiller	1

Airport Mtce Wkr Asst	Luetta Czysz	1
	Mark Jensen	1
	Melvin Talbert	1
	Michael Vlach	1
	Patrick Harrington	1
	Regina Kimble	1
	Richard Kapustanczek	1
	Robert Koplmg	1
	Stephen Dziedzic	1
	Tony Hudson	1
	Tyrome Wills	1
	Vernon Burris	1
	Warren Crawford	1
	William StGermaine	1
Airport Mtce Wkr Asst IC	Errol McFarlane	1
	Ray Davis	1
	Robin Butler	1
Airport Mtce Wkr IC	Bobby Brame	1
	Charles Pingel	1
	Dennis Pruszka	1
	Scott Janke	1
	Steven May	1
Airport Oper Coord	Edward Cyprian	1
	Jacquelyn Boyd	1
	Kenneth Hanney	1
	Kerry Washington	1
	Michael Hames	1
Airport Oper Coord 2	Barry Jeter	1
	David Lackey	1
	Donald Spitzer	1
	Eric Kaiser	1
	Grant Phillips	1
	Jeremy Fox	1
	Mark Slocum	1
	Matthew Aubry	1
	Michael Casper	1
	Thomas Slawnik	1
	Airport Oper Mgr	Kathleen David
Airport Opers Mgr Landside	John Moore	1
Airport Planner	Kevin Demitros	1
Airport Properties Mgr	Steven Wright	1
Airport Properties Mgr NR	Kathleen Nelson	1
Airport Pub Saf & Sec Coord 2	Daniel Eberhardt	1
	Kevin Jones	1
Airport Pub Saf & Secur Manage	Michael Keegan	1
Airport Security Operator	Mark Jung	1
	Robert Leaf	1
Airport Worker - Seasonal	Allan Rembert	1
	Beau Wilhelm	1
	Elijah Edwards	1
	Eric Janke	1
	Gordon Wright	1

Airport Worker - Seasonal	Hakeem Thornton	1
	Jerome Campbell	1
	Kelvin Turner	1
	Mark Tiedke	1
	Patrice Peppers	1
	Scott Miller	1
	Thomas Ahmad	1
Asst Airport Oper Mgr Landside	Holly Ricks	1
Asst Airport Pub Safe/Sec Mgr	Rodney Harris	1
Asst Airpt Maint Supv	Edgar Daleccio	1
	Kenneth Skowronski	1
	Marcus Brown	1
	Timothy Battocletti	1
Asst Airpt Oper Mgr	George Hodgson	1
	James Grava	1
Asst Chief of Air Res & Firefg	Terrance Czajkowski	1
Asst Facilities Supv	Jacqueline Cobb	1
	John Kenny	1
	John Pfeifer	1
Auto And Eq Parts Tech	Jeffrey Dawson	1
Auto And Eq Serv Supv	Bo Beyer	1
Auto And Eq Serv Tech	Brian Kulwicki	1
	Gregory Bickerstaff	1
	Jamie Vetter	1
	Kevin Clint	1
	Lyle May	1
	Max Veytsman	1
	Michael Marchese	1
	Steven Brasch	1
Auto And Eq Serv Tech I-C	Dale Urbaniak	1
Chief of Airpt Res & Fire Figh	Paul Menches	1
Clerical Asst 1	Kristy Fremut	1
Clerical Asst 1 Nr	Shannon Whitney	1
Clerical Spec Airport	Judith Pingel	1
Contract Payment Spec	Daniel Huebner	1
Contract Spec Airport	Nada Uzelac	1
Electrical Mech	Andrew Thimm	1
	Charles McDonald	1
	Jeffrey Roblee	1
	Jeffrey Wozniak	1
	John Romanski	1
	Kathie Clasen	1
	Neal Snyder	1
	Robert Gorecki	1
	Robert Whitlow	1
Electrical Mech Supv	Roger Chwala	1
Electronic Mechanic	Greg Reske	1
Exdir2-Dep Airport Dir	Frank Busalacchi	1
Exdir2-Deparptdir-Finad	Patricia Walslager	1
Exdir2-Deparptdir-Oprmn	Terry Blue	1
Exdir3-Airport Director	Charles Bateman	1
Executive Assistant Airport	Shawn Niessen	1

Facilities Supv	Dorothy Cain-Brown	1
Fire Captain	Daniel Hareng	1
Firefighter Equip Oper	Alan Calhoun	1
	Ann Brottlund	1
	Daniel Bujanovich	1
	David Plumb	1
	Dillon Briesemeister	1
	Jacob Lipski	1
	Jayson Paoletti	1
	Jeffrey Birmingham	1
	Kelly McFarlane	1
	Kevin Doyne	1
	Kevin Erdmann	1
	Molly Gehrt	1
	Robert Kaslick	1
	Robert Wojczulis	1
Scott Wisniewski	1	
Torres Henderson-Thomas	1	
Fiscal Asst 2	Mary Braasch	1
GIS Specialist	Timothy Pearson	1
Heating And Vent Mech 1	Boyce Michalak	1
	Corey Tucker	1
	Donald Kube	1
	Marko Bosnjak	1
	Robert Baker	1
	Su Hsieh	1
Heating And Vent Mech 2	Jean-Pierre Trzebiatowski	1
	Jerome Peterson	1
Maintenance Supv Airport	Robert Badzinski	1
Market Pubrelcoord Airport	Patricia Goetzinger	1
Network Tech Spec Airpt	Gezae Gebre	1
	Wilfredo Rivera	1
Network Tech Spec IV Airport	George Knops	1
Noise Program Coord	Kim Berry	1
Operatting And Mtce Supv	David Poker	1
Payroll Asst	Gayle Doukas	1
Plumber	Andrew McDonald	1
	James Glyzewski	1
Public Relats Coord	Ryan McAdams	1
Safety Train Spec Airport	James Weishan	1
Secretarial Asst	Pamela Cavadias	1
Secretarial Asst Nr	Nancy Kelly	1
	Sarah Puchalski	1
Secretary Nr	Debra De Decker	1
Steamfitter Temp Contrl	Claude Hill	1
	Weldon Calvin	1
Stores Clerk 1	Keith Neitzke	1
Grand Total		251

FLEET DIVISION

SCOPE

The Fleet Management Division maintains a fleet of approximately 2500 pieces of equipment for the Highway Division, Parks, Sheriff's Office, District Attorney, and Medical Examiners. Department of Health Human Services & Behavioral Health, Facilities Management and the Zoo. Fleet maintains, repairs and disposes of all County owned equipment and works with user departments to ensure the proper equipment is purchased.

ROLES AND RESPONSIBILITIES

Fleet Division is under the jurisdiction of the newly created Department of Transportation. The division manages all activities necessary for the efficient, day-to-day operation of Milwaukee County fleet inventory. In order to provide and monitor the various roles, the sections are divided into the following areas of responsibilities:

Fleet Administration – There are three positions in the office, Accountant III, Administrative Specialist, and a Clerical Assistant, which provide day to day services which include accounts payables, purchasing new equipment, human resources, cross charges and budgets, fleet motor pool, accidents, and fuel purchases.

Maintenance Staff – There are 30 employees, which maintain the day-to-day operations of the Fleet Management Division. Two service supervisors direct the staff on daily repairs. We have 21 technician I/C, technicians, and technician helpers that perform the daily maintenance. Two welder/fabricators that perform daily structural repairs. Four parts technicians that order repair parts needed for the daily repairs and also monitor the inventory stock. One maintenance worker that maintains the Fleet building, Highway/Sheriff building, and the grounds.

FLEET DIRECTOR

DANIEL GOEDEN

CENTRAL NIGHTS

Auto & Equip Tech In-Charge
Mike Fourness

Auto & Equip Tech
Don Heise
Jameson McNaughton
Michael Gilbert
Bruce Blunt

Service Supervisor – Mark Cesar
Service Supervisor – Melvin Jackson

Auto & Equip Tech In-Charge
Greg Linden
Tom Lovinus

Auto & Equip Tech
John Vergata
Steve Deschaine
Dave Jurzynski
Wayne Blubach
Greg Himmelstein
Rudy Neihous
Greg Parks
Juan Lopez
Thomas Trappler
Daniel Young
Jeff Strickel

Auto & Equip Tech Assistant
Vacant
Ralph Engl

Fleet Maintenance Worker
Mike Skrobiszewski

CENTRAL DAYS

Parts Tech In Charge – Jim Wiskerchen
Peter Micech – Parts Tech
Dan Weak – Parts Tech
IRONWORKERS: Ernie Schiel/Jim

CENTRAL OFFICE

Accountant III- Darryl Marcoux
Admin Specialist-Carol Steffes
Clerical Asst I – Barbara Scott

NORTH SHOP

Auto & Equip Tech In-Charge Paul Koceja
Auto & Equip Tech – Jake Smith

MILWAUKEE COUNTY TRANSIT SYSTEM

SCOPE

Milwaukee County Transit System (MCTS) was created from the privately owned fixed-route system operated by the Milwaukee and Suburban Transport Company, Inc. All assets of the private company, including operating rights to all routes and the operating equipment and facilities, were acquired by Milwaukee County. The newly created Milwaukee County Transit System formally began operation of the bus system on July 1, 1975.

The President of the contracted company known as MTS reports directly to the Director of Transportation and has oversight of all purchases, contractual obligations, grants, and works to continue to develop our transportation system to benefit the traveling public for Milwaukee County.

ROLES AND RESPONSIBILITIES

Milwaukee County Transit System is under the jurisdiction of the newly created Department of Transportation. The division manages all activities necessary for the efficient, day-to-day operation of Milwaukee County Transit System and Paratransit Program. In order to provide and monitor the various roles, the sections are divided into the following areas of responsibilities.

Milwaukee County Transit Inc., as operator of Milwaukee County Transit System, furnishes all management services as required and necessary for the efficient day-to-day operation of MCTS including, but not limited to, fixed route bus transportation service and planning, bus schedule preparation, bus route planning, vehicle maintenance, specification development and procurement, facilities maintenance, labor relations, accounting, fare media design, development and printing, processing and handling of fares collected, employee selection and training, transit system marketing and branding, public relations and communications, personal injury and property damage claims, procurement, Para-transit transportation services and administration, and all other services ordinarily required in daily operation of a transit system. MTS is responsible for the orderly safekeeping, maintenance and operation of equipment and facilities purchased for the operation of the Milwaukee County Transit System.

Administrative Structure

MCTS is operated by the private nonprofit corporation Milwaukee Transport Services, Inc. (MTS). MTS has operated MCTS for Milwaukee County since July 1, 1975. Oversight of Milwaukee Transport Services, Inc. is provided by the Director of the Milwaukee County Department of Transportation and the Milwaukee County Transportation, Public Works and Transit Committee, a standing committee of the Milwaukee County Board of Supervisors. Under this arrangement, the County is responsible for providing the capital equipment and facilities and the public funds needed for operating the transit system. Under a management contractual arrangement with Milwaukee County, Milwaukee Transport Services, Inc. provides a Managing

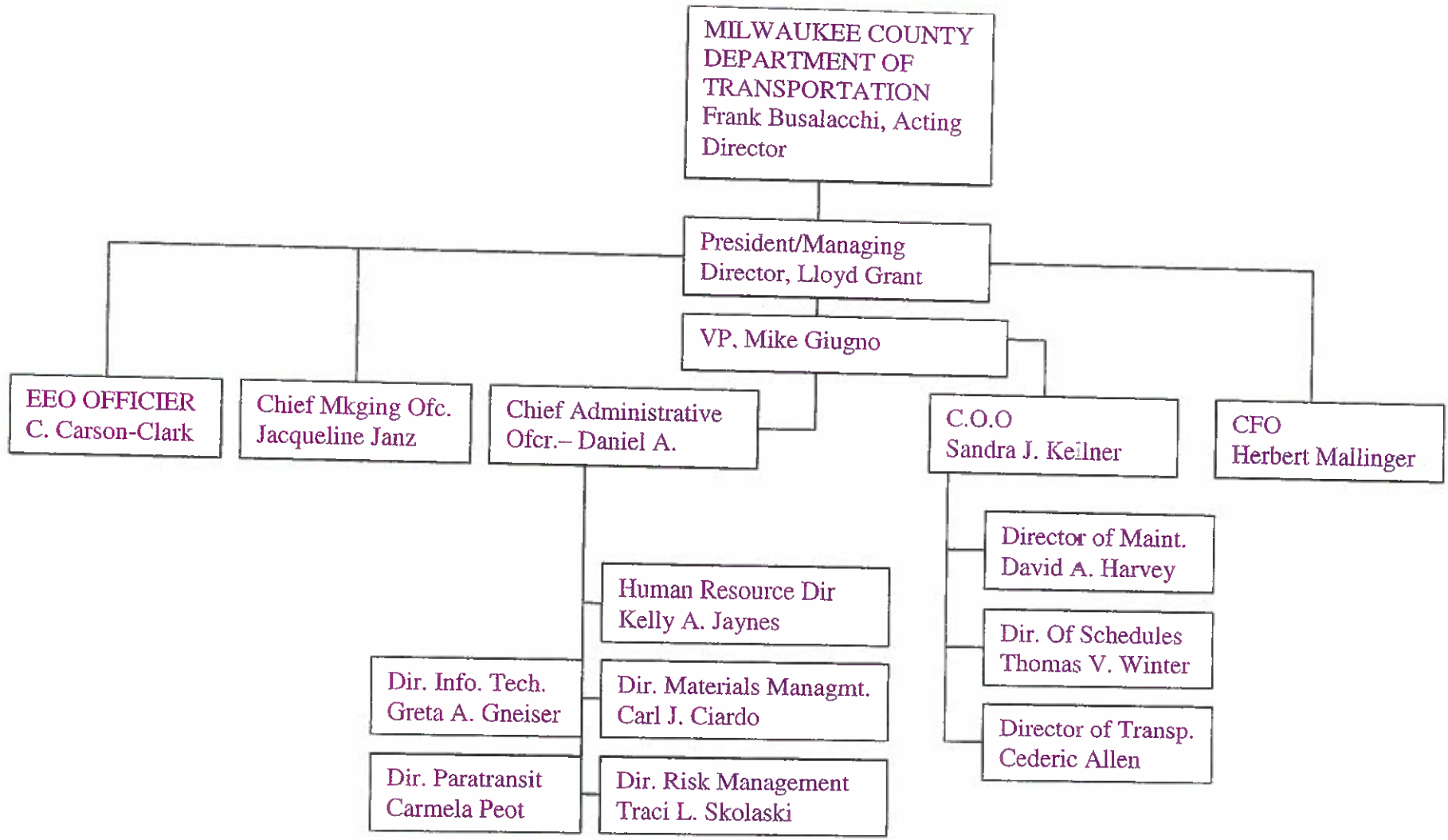
Director and Deputy Director. County administration of the management contract is provided by the Director of the Milwaukee County Department of Transportation. Milwaukee Transport Services, Inc. assumes full responsibility for day-to-day operating and management decisions and operates the transit system with private sector employees, while the County assumes the principal role in determining the transit system annual budget and transit policy issues including establishment of fares and other charges, grant administration, standards of services, route locations, services operated, service improvements, capital improvements, and operating equipment and facilities.

Paratransit operations administered by MTS include the provision of demand responsive transportation, and orientation to transportation services. These services provide a complement to the fixed-route services of MCTS and are available to those who are Americans with Disabilities Act (ADA) Paratransit eligible.

MTS also carries out and complies with all Federal, State of Wisconsin, and local regulations for the transit system including National Transit Database reporting, reporting to the Wisconsin Department of Transportation and Federal required drug and alcohol testing of safety sensitive employees. MTS works with the Milwaukee County Intergovernmental Relations Office as needed on legislative issues affecting the transit system at the State and Federal level. MTS also participates on numerous committees and Boards in an effort to stay abreast of administrative and legislative changes affecting public transit while providing active and effective representation of the Milwaukee County Transit System.

Staff and budget. MTS employes classifications and names are attached for review.
(see attached)

MILWAUKEE COUNTY TRANSIT SYSTEM



Milwaukee Transport Services, Inc./MCTS
Salary Roll Employees - December 21, 2011

<u>Position</u>	<u>Count</u>
President & Managing Director	1
Vice President & Deputy Director	1
Chief Operating Officer	1
Chief Administrative / DBE Officer	1
Chief Labor & EEO Officer	1
Chief Financial Officer / Treasurer	1
Chief Marketing & Communications Officer	1
Director of Human Resources	1
Director of Information Technology	1
Director of Maintenance	1
Director of Materials Management	1
Director of Paratransit Services	1
Director of Risk Management	1
Director of Schedule & Planning	1
Director of Transportation	1
	<u>15</u>

Milwaukee Transport Services, Inc./MCTS
 Non-Represented Employees - December 21, 2011

<u>Position</u>	<u>Count</u>
Transportation Administration	
Manager of Administration	1
Coordinator of Station Operations	1
Division Managers	3
Station Supervisors	5
Training Supervisor	2
Office Manager	1
Transportation Street Operations	
Manager of Security & Street Operations	1
Route Supervisors	12
Route Supervisor/Relief Dispatcher	3
Coordinator of Street Supervision	1
Coordinator of Dispatch Operations	1
Dispatcher	5
Schedule	
Manager of Schedules	1
Maintenance	
Garage Managers	3
Garage Supervisors	7
Equipment Engineer	1
Engineering Technician	1
Administrative Assistant	1
Manager of Administrative Services	1
Training Instructor	1
Office Manager	1
Manager of Shop Operations	1
Estimator	1
Project Coordinator	1
Shop Supervisors	3
Manager of Building and Grounds	1
Treasury	
Manager of Treasury Services	1
Treasury Specialist	1
Cashier	
Cashier	1
Assistant Cashier	1
Supply Crew Supervisor	1
Payroll	
Supervisor of Payroll	1
Marketing	
Communications Manager	1
Marketing Associate	1
Manager of Business & Institutional Sales	1
Risk Management	
Worker's Compensation Administrator	1
Worker's Compensation Coordinator	1
Senior Claim Investigator/Adjuster	2
Secretary	1

Milwaukee Transport Services, Inc./MCTS
 Non-Represented Employees - December 21, 2011

<u>Position</u>	<u>Count</u>
Human Resources	
Human Resources Specialist	1
Manager of Employment	1
Secretary	1
Employee Benefits	
Coordinator of Employee Benefits	1
Manager of Employee Benefits	1
Information Technology	
Systems Analyst	1
Manager of Voice & Data Systems	1
Network Administrator	1
IT Specialist	2
Accounting	
Manager of Accounting & Payroll	1
Supervisor of Accounting	1
Assistant Director of Finance	1
Materials Management	
Manager of Procurement	1
Purchasing Agent	3
Manager of Stores	1
Print Shop	
Manager of Printing	1
Executive	
Executive Assistant	1
Executive Office Manager	1
Planning	
Manager of Planning	1
Assistant Transit Planner	1
	<hr/>
Fixed Route Totals	97
Transit Plus	
Contract Manager	1
Compliance Auditor / Assessor	1
Assessor / Mobility Trainer	1
Eligibility Assessor	1
Part-Time Community Relations Liaison	1
	<hr/>
Transit Plus Totals	5
Grand Totals	102

Milwaukee Transport Services, Inc./MCTS
 Employees Represented by OPEIU Local 35 - December 21, 2011

<u>Position</u>	<u>Count</u>
Transportation	
Clerk II	1
Schedule	
Schedule Maker	3
Maintenance	
Clerk I - Part Time	1
Cashier	
Clerk II	5
Clerk II - Part Time	2
Payroll	
Payroll Clerk II	2
Clerk IV	1
Marketing	
Clerk II	1
Employee Benefits	
Clerk II	1
Information Technology	
Programmer / Analyst	4
Programmer	1
Accounting	
Accountant II	2
Accountant I	1
Senior Accounting Clerk	1
Clerk II	1
Materials Management	
Clerk III	1
Office Management & Services	
Receptionist / Console Operator	1
Planning	
Clerk II - Part Time	<u>1</u>
	Fixed Route Totals
	<u>30</u>
Transit Plus	
Clerk III	1
Clerk II	<u>3</u>
	Transit Plus Totals
	<u>4</u>
	Grand Totals
	<u>34</u>

Milwaukee Transport Services, Inc./MCTS
 Employees Represented by ATU Local 998 - December 21, 2011

<u>Position</u>	<u>Count</u>
Transportation	
Bus Operators	720
Station Administrative Assistants	3
Station Clerks	9
Customer Service Agents	2
Maintenance	
Garages	
Bus Mechanics	68
Garage Clerks	8
Cleaner / Tankers	26
Shops	
Body & Paint Mechanics	14
Bus Mechanics	12
Unit Repairers	4
Equipment Fabricator	1
Electrician	3
Upholsterer	1
Electronic Technician	3
Mechanic Helper - Part Time	1
Building & Grounds	
Electrician	1
Maintenance Repairer	8
Maintenance Helper	3
Cashier	
Supply Truck Operator	1
Materials Management	
Disbursers	5
Shipper & Receiver	1
Truck Driver	1
Print Shop	
2 Color Offset Press Oper	2
Small Press Operator	1
Pre / Press Operator	1
	<hr/>
Fixed Route Totals	899
Transit Plus	
--	<hr/>
	-
Transit Plus Totals	-
	<hr/>
Grand Totals	899