

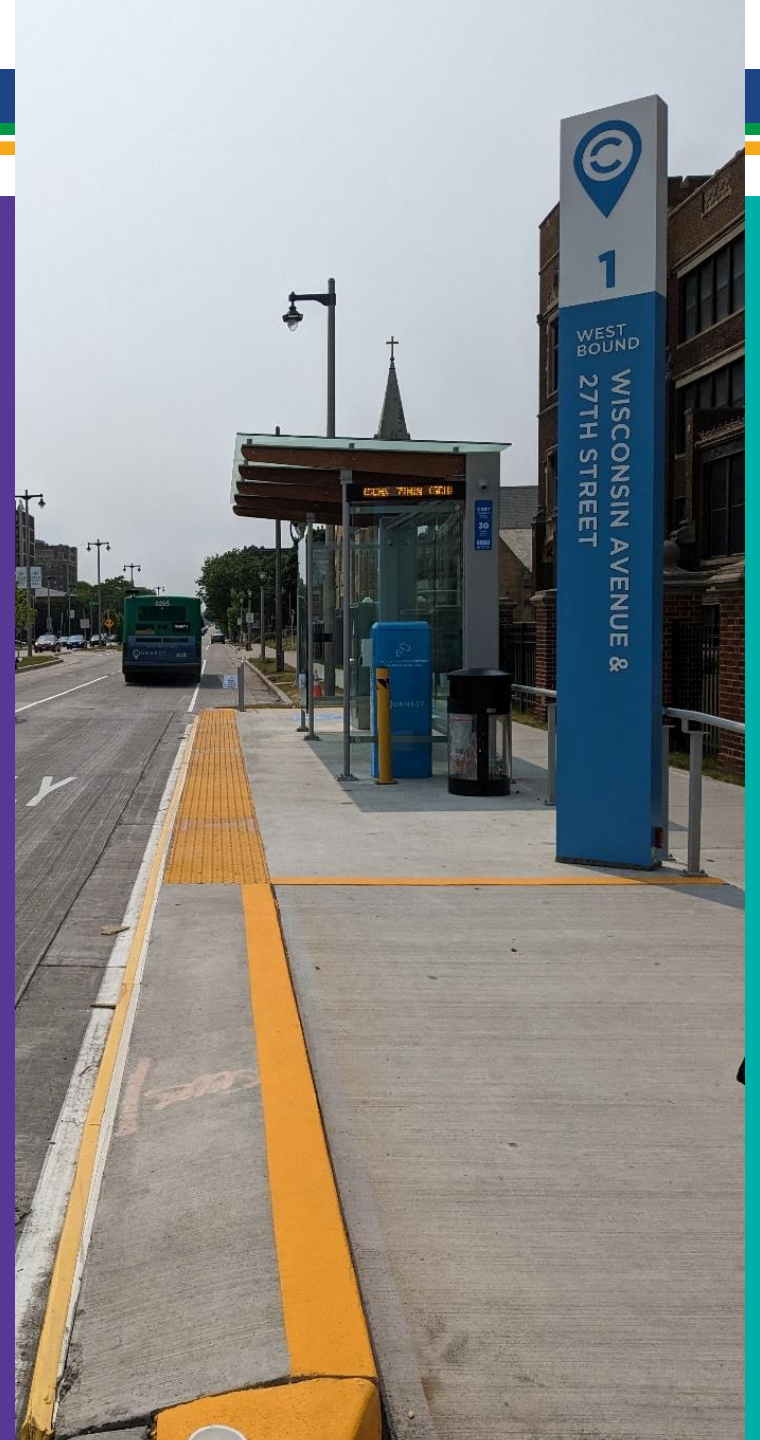


MILWAUKEE
**NORTH
SOUTH**
Transit Enhancement



PROJECT UPDATE

Milwaukee County Transportation and Transit Committee
November 1, 2023



BRINGING CONNECT BRT TO 27TH STREET





WHY 27th STREET

CONNECTIVITY EMPOWERS COMMUNITY



Investment in **communities of color**



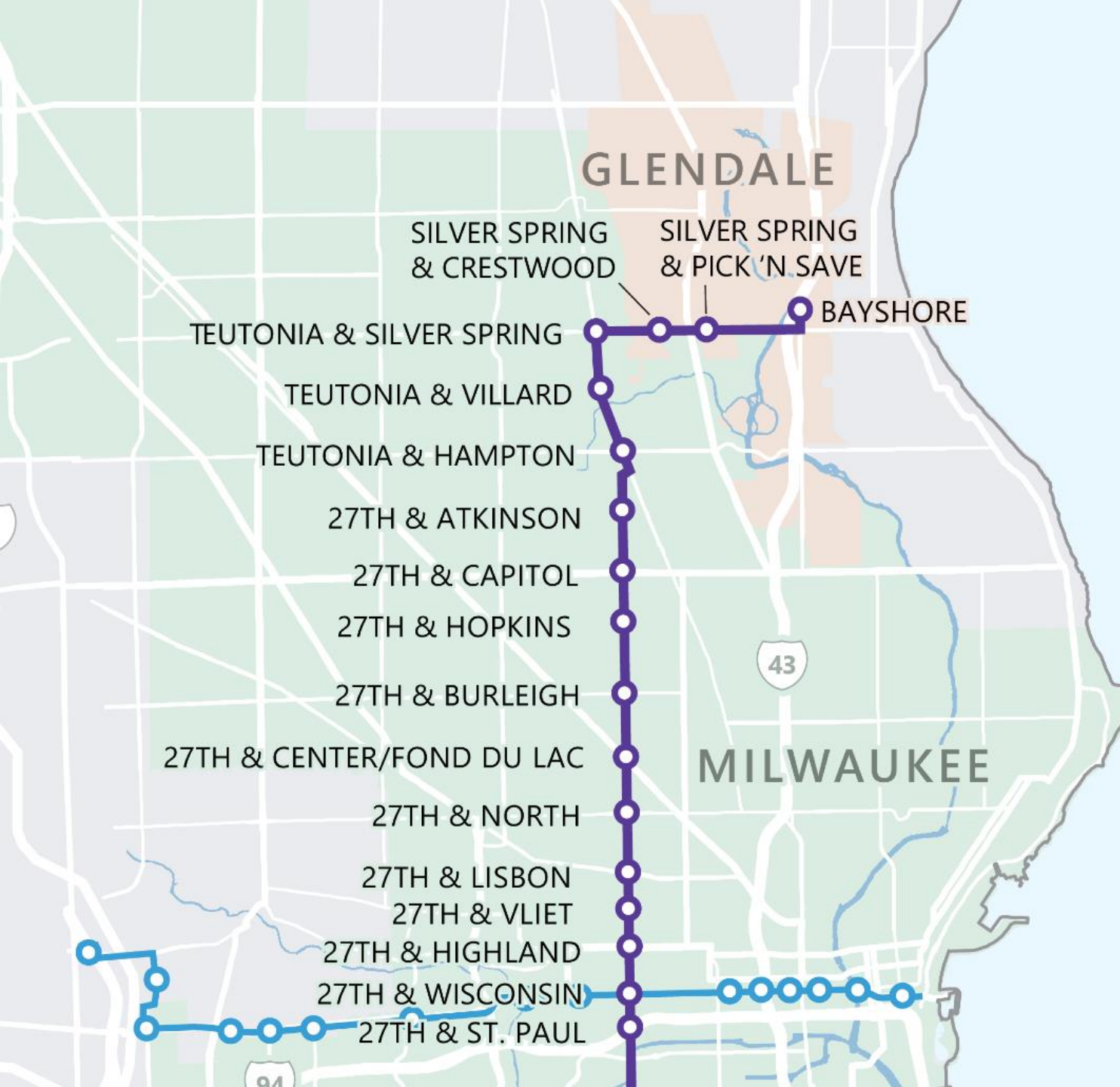
One of MCTS's **most-used** routes



Link to **essential services**

ROUTE RECAP

NORTH

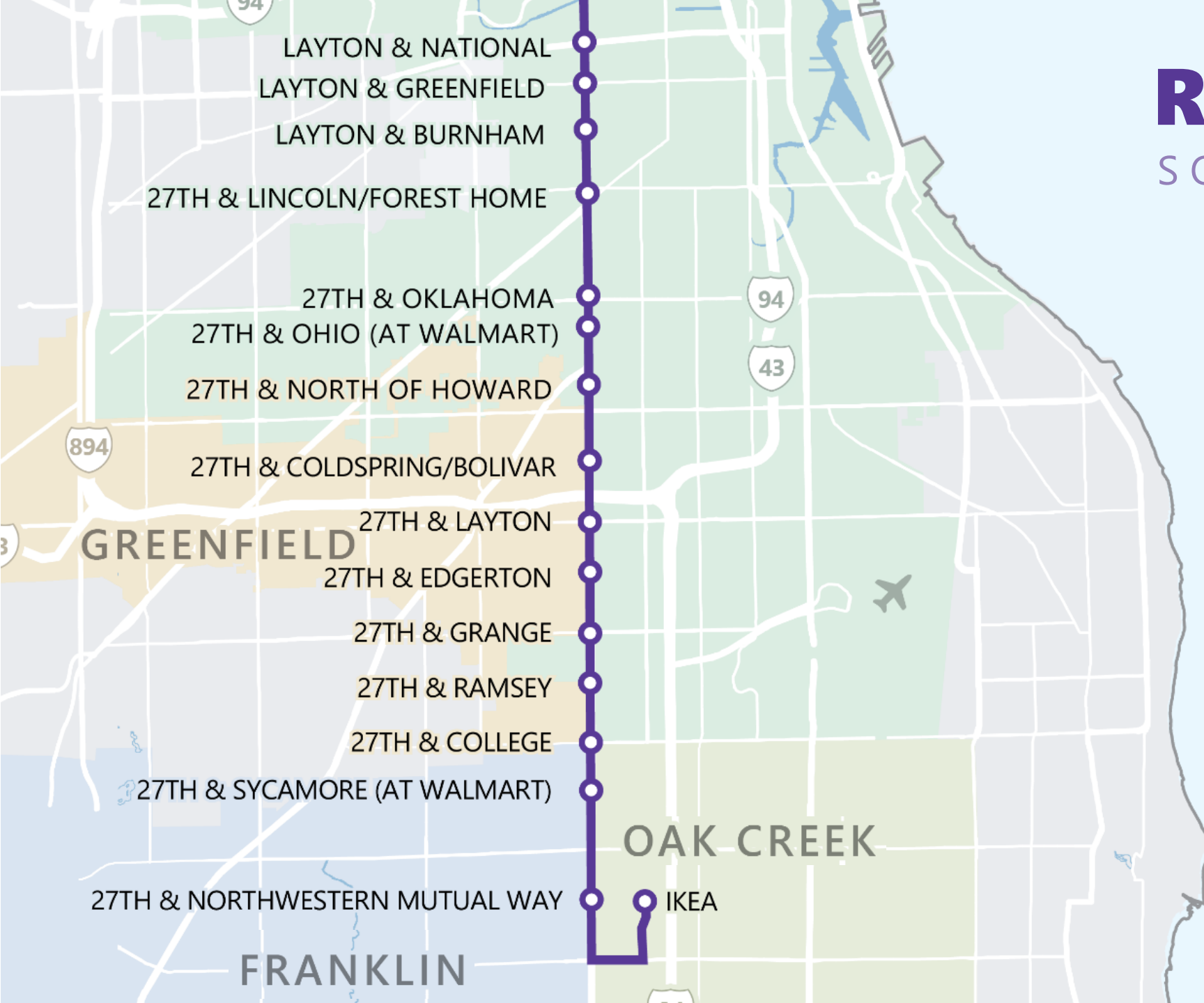


Legend

- RECOMMENDED ROUTE
- RECOMMENDED STATIONS
- CONNECT 1 (EAST-WEST BRT)

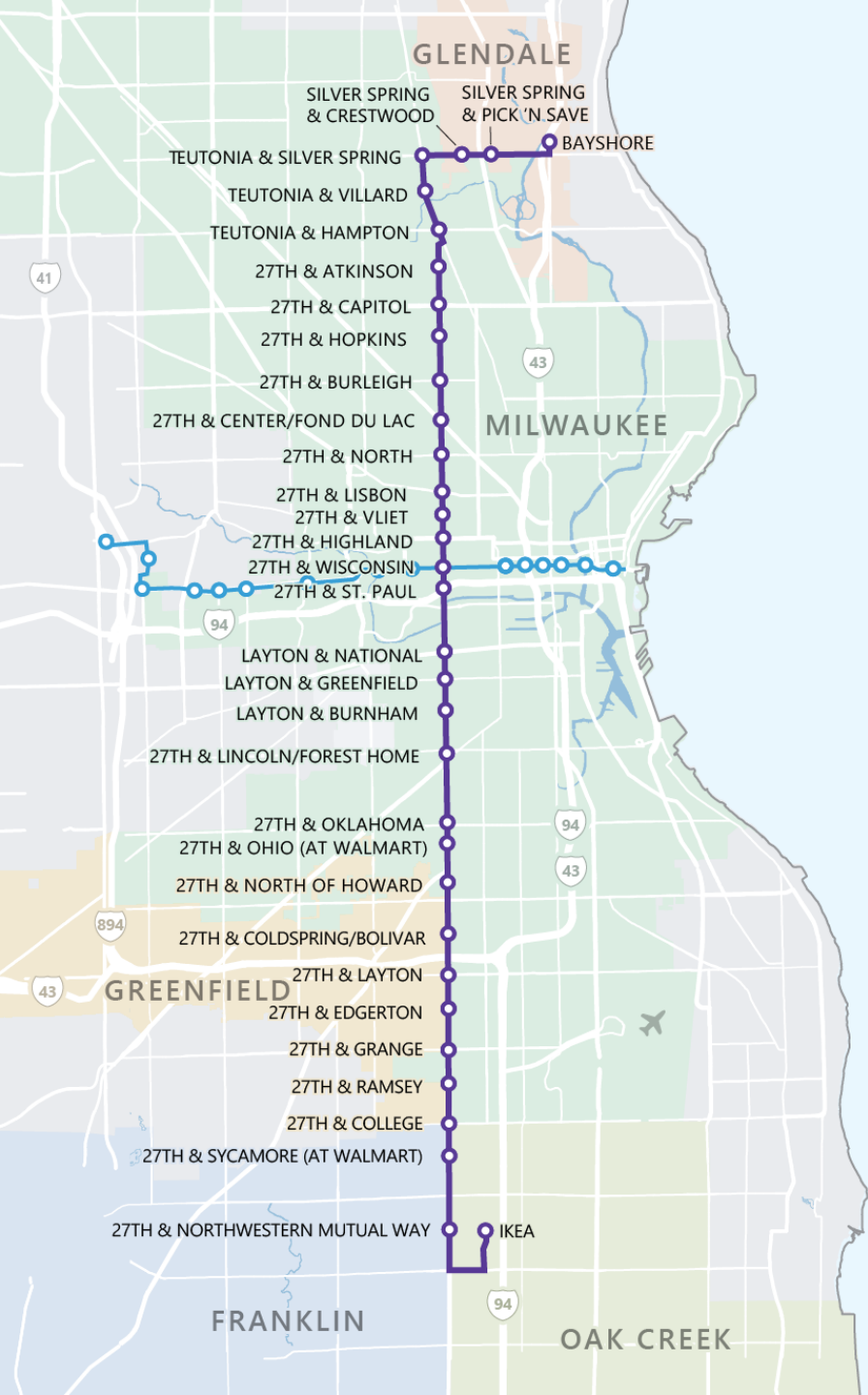
ROUTE RECAP

SOUTH



Legend

- RECOMMENDED ROUTE
- RECOMMENDED STATIONS
- CONNECT 1 (EAST-WEST BRT)



BY THE NUMBERS



18 miles



33 stops



Buses arrive **every 10 minutes**



Transfer to **55% of MCTS routes**

PROJECT COST & FUNDING

Capital Cost

\$148.15M

20% Local Funds/
80% Federal Funds

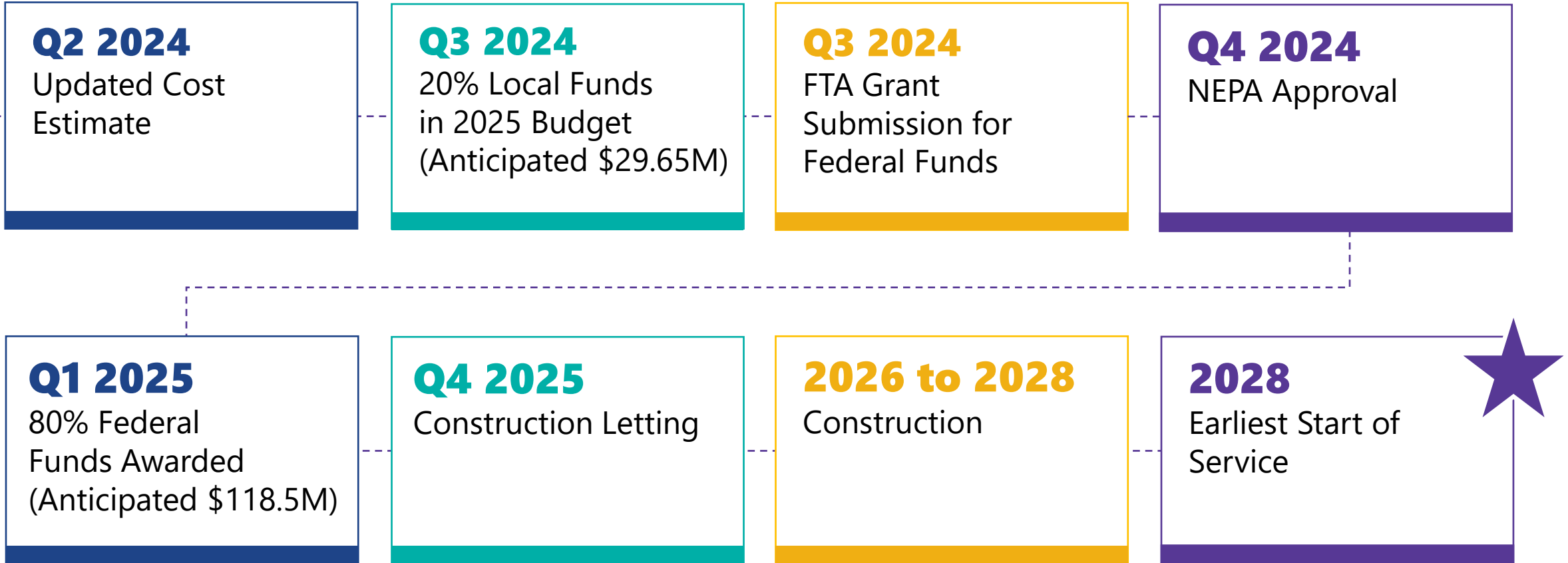
Operations & Maintenance Cost

\$11.5M

Note: Feasibility Study Cost Estimate. Subject to Change.



FUNDING AND APPROVAL MILESTONES





PROJECT DEVELOPMENT UPDATES



FTA
Coordination



Environmental
Review



Design

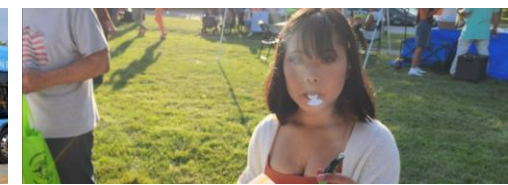


Outreach

- ☑ FTA reviewed the Purpose and Need
- ☑ Initiated WisDOT and municipal coordination
- ☑ Surveyed the corridor
- ☑ Initiated design review of guideway and platforms
- ☑ Began drafting key portions of the environmental document
- ☑ Began traffic analysis



IN THE COMMUNITY



AS OF SEP 2023

473 Subscribed for Project Updates

23 Stakeholder Meetings

14 Community Events



WHO WE'VE REACHED

Milwaukee County

Federal Transit Association

Wisconsin DOT

City of Milwaukee

City of Glendale

City of Greenfield

City of Franklin

City of Oak Creek

African American Chamber

Amalgamated Transit Union (ATU) Local 998

Amani United

Bublr

Century City Triangle Neighborhood Association

Franklin Business Park Consortium

Independence First

Menomonee Valley Partners

Milwaukee Inner-City Congregations Allied for Hope (MICAH)

MobiliSE

Near West Side Partners

Northwest Side CDC

Sherman Park Community Association

Sierra Club

Sixteenth Street Community Health Center

South 27th Street BID

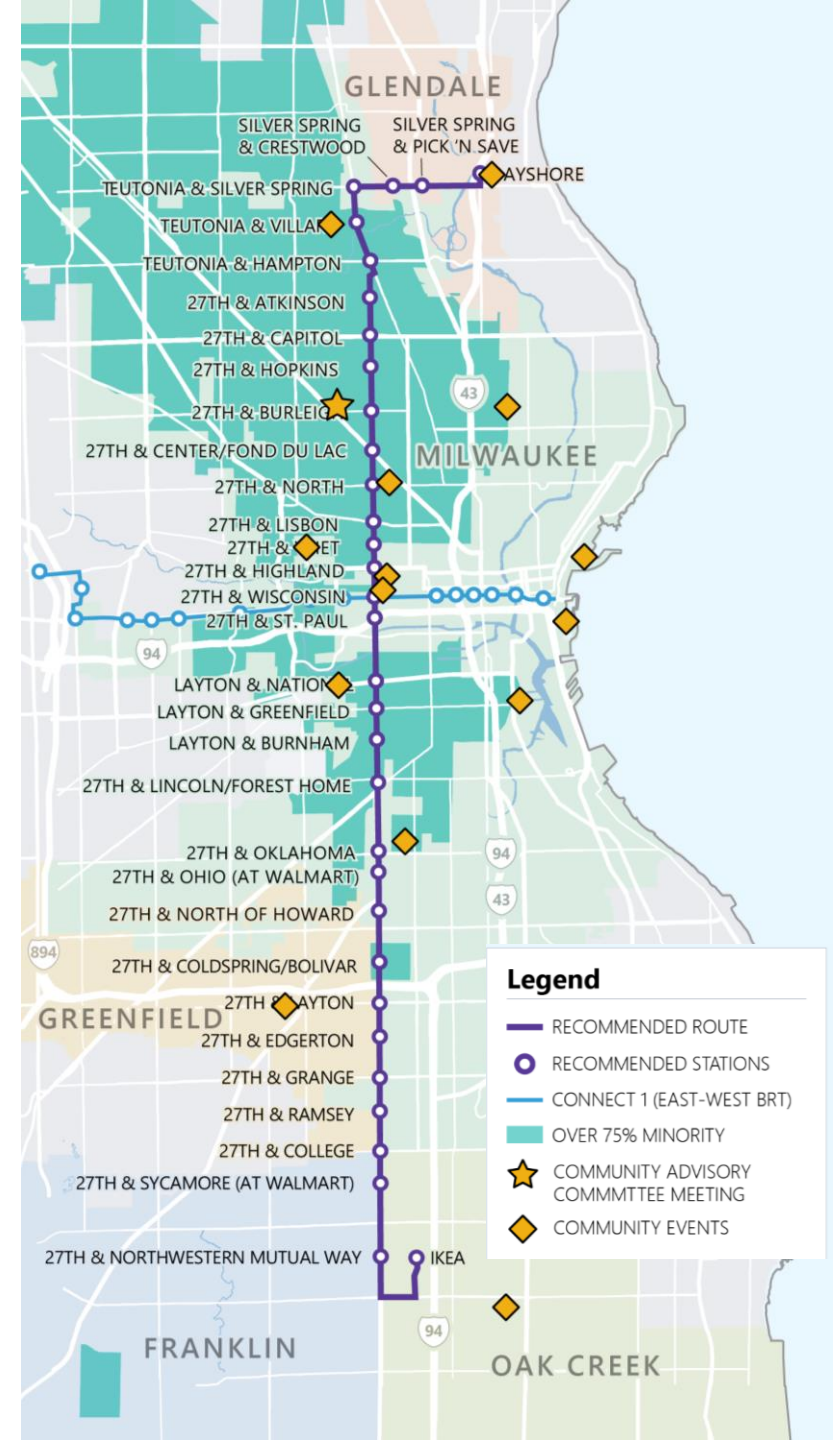
Southeast Wisconsin Regional Planning Commission (SEWRPC)

Southside Organizing Center

VIA

Villard Avenue BID

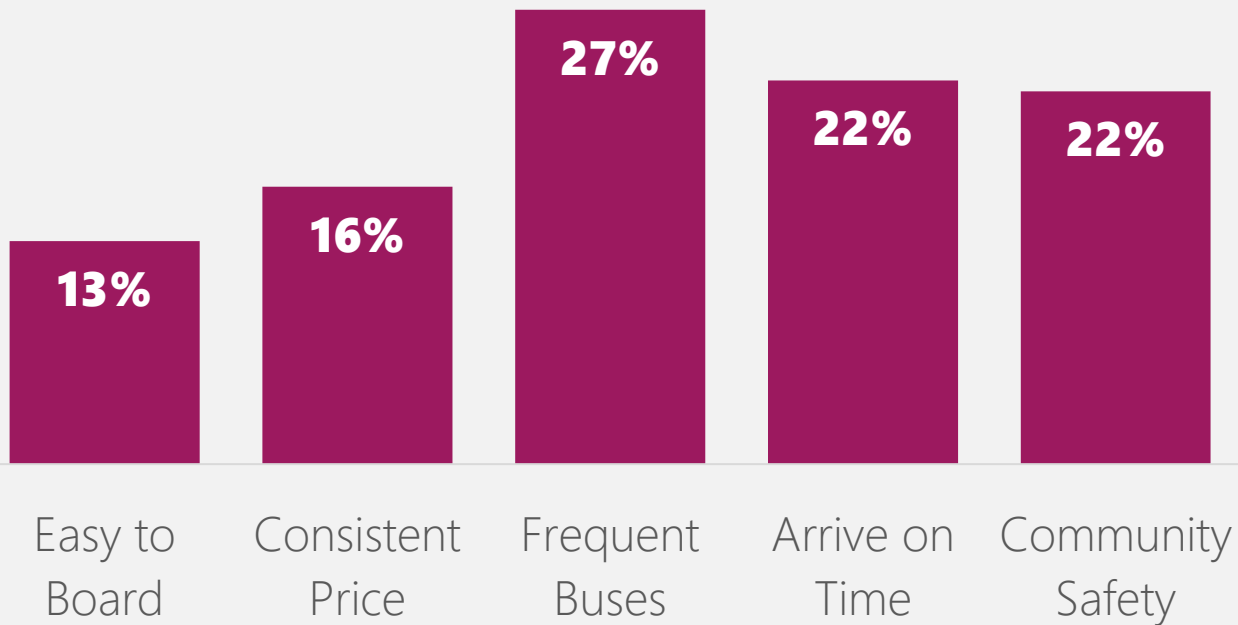
Vision Forward



WHAT WE'VE HEARD

This project will enhance transit in several ways.

WHICH ARE MOST IMPORTANT TO YOU?



250 in-person + **50** online responses

"I'm **excited** about this project."

"We need **more buses**."

"How can this project **make 27th Street safer**?"

"How will bus-only lanes **impact others** on the road?"

"Any changes to the roadway will need **lots of communication**."

"Keep **street parking** where people need it most."

"**What's next?** How can we get more BRT for our community?"

PROJECT FEATURES THAT RESONATE



Reliability for 4,600+ Riders Each Weekday



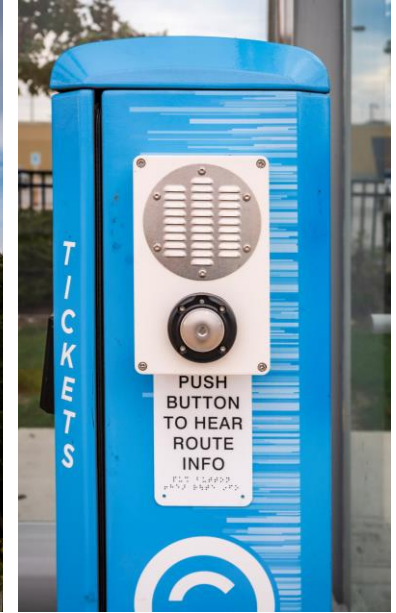
Stations as Investments in our Community



Low-Impact Construction



Pedestrian Safety Improvements

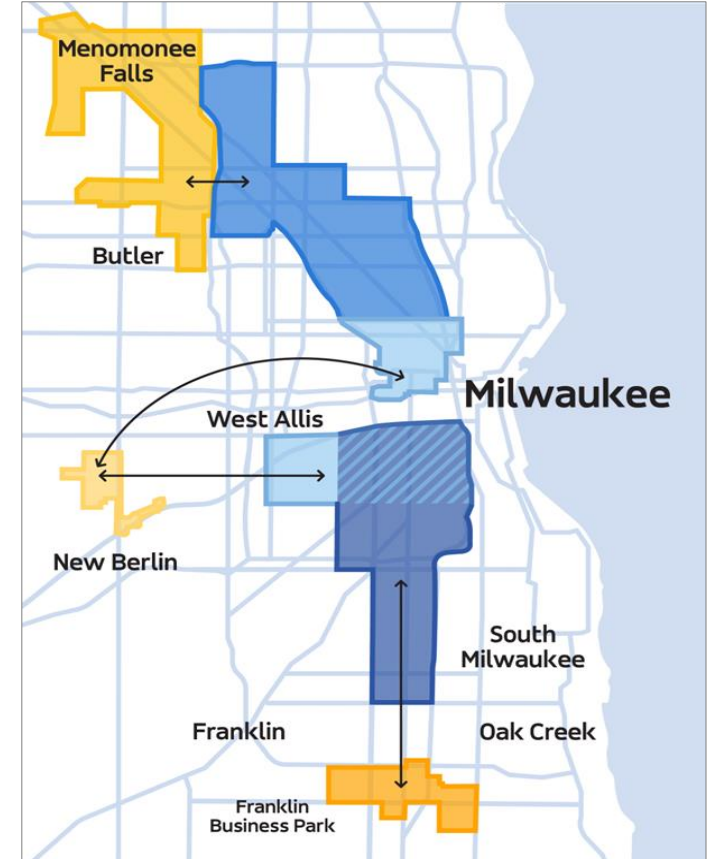


Accessibility Improvements

LAST MILE CONNECTION



A Service Of





PROJECT DEVELOPMENT NEXT STEPS

- **Public meetings**
- **Community partner** program
- Coordination with **committees**
- Coordination with **local governments**
- Detailed **traffic analysis**
- Ongoing development of **NEPA document**
- **Concept design** of guideway and platform locations

FOR MORE INFORMATION



Home Equity Engage FAQ Library Contact

English

NORTH SOUTH Transit Enhancement

ENHANCING TRANSIT ALONG 27TH STREET

Investing in Access and Racial Equity

More riders depend on transit along the 27th Street corridor for access to jobs, healthcare and education than most other corridors in the Milwaukee area. To meet the community's modern mobility needs, the Milwaukee County Transit System (MCTS) has begun the environmental review and design process to deploy bus rapid transit (BRT) service along the 27th Street corridor, the second route planned for Milwaukee County's newest BRT system, CONNECT. The use of BRT in this corridor was recommended by the transit enhancement feasibility study completed in 2022. Outreach will continue to be an important aspect during this next phase of the project, with opportunities for the public to provide input.

STAY IN THE KNOW
Join our contact list to receive project updates by email.

SHARE YOUR THOUGHTS
Send a comment or question at any time to the project team.

SIGN UP CONTACT

ABOUT THE PROJECT

By displaying BRT along the 27th Street corridor, the Milwaukee North-South Transit Enhancement project will enhance service for the current MCTS PurpleLine riders and intersect with CONNECT (East-West BRT), the first route in the CONNECT BRT system. The project would increase frequency, add amenities and serve more community members along the 27th Street corridor.

This project is one way Milwaukee County is keeping the commitment to achieving racial equity and social justice made in 2019 when the County resolved to advocate for policies that improve health in communities of color. The project will improve access to convenient transportation for jobs, education, healthcare, grocery stores and other essential services—each with a positive impact to health and economic opportunity.

For more information:

- View the [Project Fact Sheet](#)
- Watch a [Video](#) summarizing the recommended route identified in the feasibility study.
- Visit the [Library](#) for additional project information and reports from the feasibility study.

RECOMMENDED ROUTE

27th Street BRT
Boyshoresh to KEA

PROJECT GOALS

- Address inequalities in our transportation system
- Improve the quality of service for those who depend on transit
- Reduce reckless driving in the corridor
- Attract new riders



www.mkenorthsouth.com



PROJECT CONTACTS

DAVID LOCHER

Manager of Enhanced Transit,
Milwaukee County Transit System
(414) 343-1727
dlocher@mcts.org

CAROLYN SEBOE

Consultant Project Manager,
HNTB
(414) 410-6743
cseboe@hntb.com

