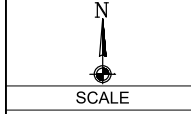


REVISIONS		
DATE	DESCRIPTION	INITIAL
2-3-2020	SPARE CONDUIT NOTE	DLK



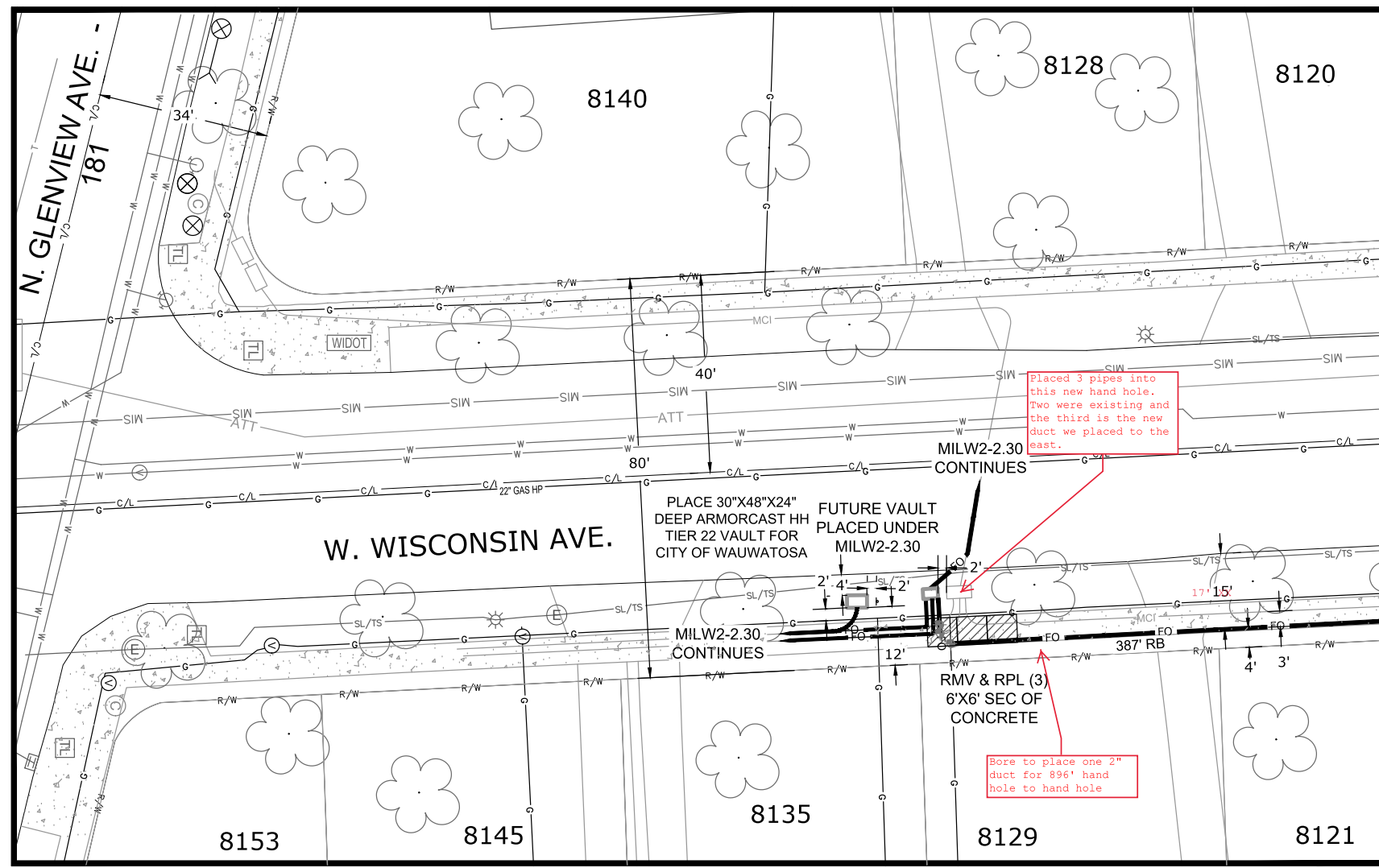
HORIZONTAL: 1"=20'

VERTICAL: 1"=20'

MP \_\_\_\_\_ TO MP \_\_\_\_\_

SHEET 2 OF 13

FILE: MIL22-27



**CONSTRUCTION NOTE:**  
 DAYLIGHT WHERE NECESSARY AND ADJUST DEPTH ACCORDINGLY

THE UTILITIES SHOWN ON THIS PLAN ARE INDICATED IN ACCORDANCE WITH AVAILABLE RECORDS. THE CONTRACTOR SHALL BE RESPONSIBLE FOR OBTAINING EXACT LOCATIONS AND ELEVATIONS OF ALL UTILITIES FROM THE OWNERS OF THE RESPECTIVE UTILITIES AND FROM FIELD VERIFICATION.

**CONSTRUCTION NOTE:**  
 BURY CABLE AT A MINIMUM OF 36" DEPTH UNLESS OTHERWISE NOTED ON PRINTS.

**EVERSTREAM PROPOSES TO BURY (1) FIBER COMMUNICATION CABLE IN A 2" CONDUIT & (1) SPARE 2" CONDUIT FOR CITY OF WAUWATOSA**

**LEGEND**  
 TB : TREE BORE (DIRECTIONAL BORE)  
 RB : ROAD BORE (DIRECTIONAL BORE)  
 T : TRENCH  
 HD : HAND DIG  
 P : PLOW

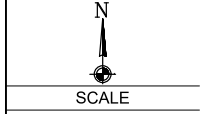
FO \_\_\_\_\_ FIBER CABLE

**everstream**  
 FASTER FIBER. BETTER BUSINESS.

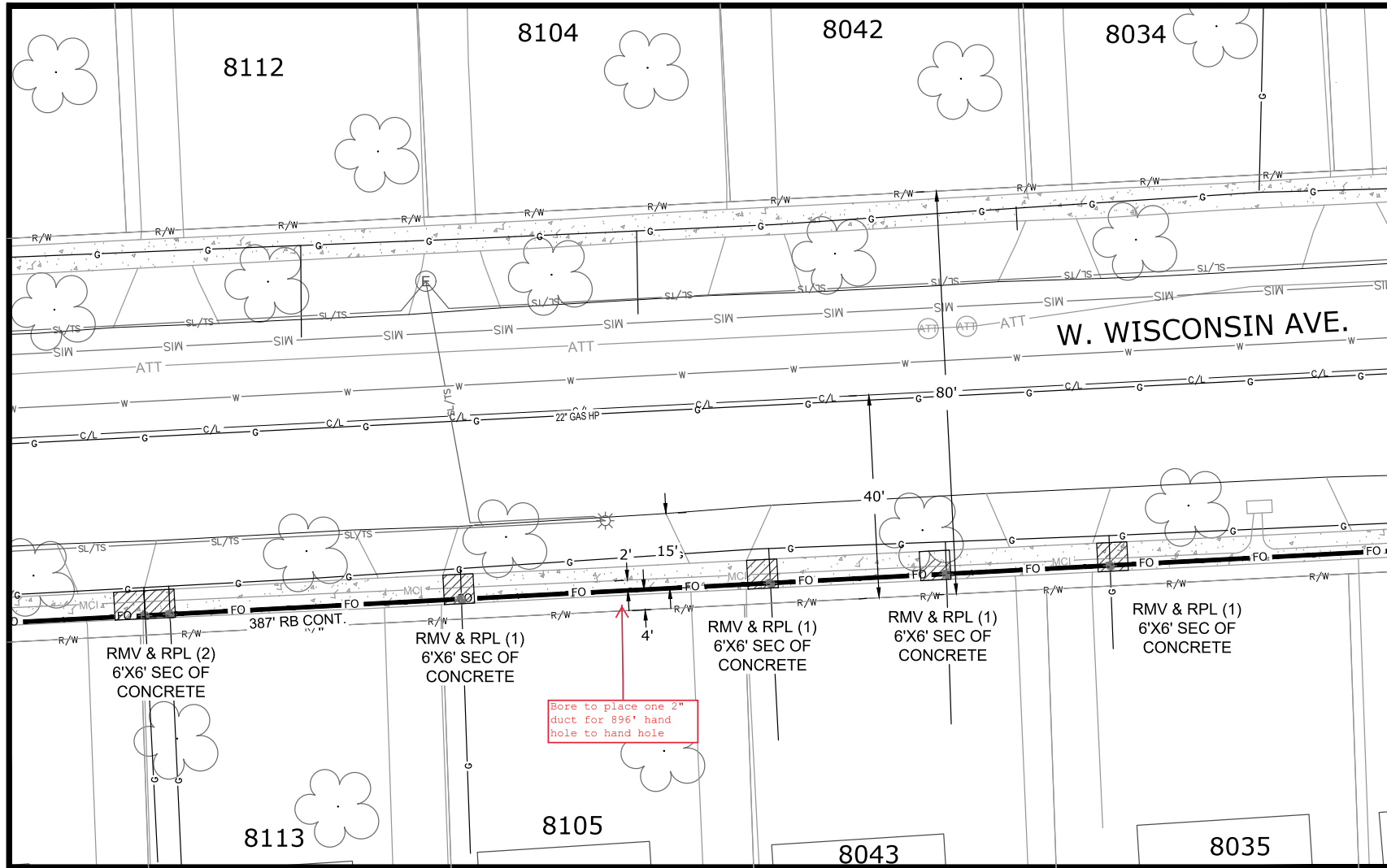
Lee Smet  
 OSP Manager  
 324 E WISCONSIN AVE  
 SUITE 730  
 MILWAUKEE, WI  
 (414) 721-1418

DATE: 2-11-2020  
 ENGINEER: GTK  
 DRAWN BY: DLK

REVISIONS		
DATE	DESCRIPTION	INITIAL
2-3-2020	SPARE CONDUIT NOTE	DLK



HORIZONTAL: 1"=20'  
 VERTICAL: 1"=20'  
 MP \_\_\_\_\_ TO MP \_\_\_\_\_  
 SHEET 3 OF 13  
 FILE: MIL22-2.7



**CONSTRUCTION NOTE:**  
 DAYLIGHT WHERE NECESSARY AND ADJUST DEPTH ACCORDINGLY

= DAYLIGHTING

THE UTILITIES SHOWN ON THIS PLAN ARE INDICATED IN ACCORDANCE WITH AVAILABLE RECORDS. THE CONTRACTOR SHALL BE RESPONSIBLE FOR OBTAINING EXACT LOCATIONS AND ELEVATIONS OF ALL UTILITIES FROM THE OWNERS OF THE RESPECTIVE UTILITIES AND FROM FIELD VERIFICATION.

**CONSTRUCTION NOTE:**  
 BURY CABLE AT A MINIMUM OF 36" DEPTH UNLESS OTHERWISE NOTED ON PRINTS.

**EVERSTREAM PROPOSES TO BURY (1) FIBER COMMUNICATION CABLE IN A 2" CONDUIT & (1) SPARE 2" CONDUIT FOR CITY OF WAUWATOSA**

FO ——— FIBER CABLE

**LEGEND**  
 TB : TREE BORE (DIRECTIONAL BORE)  
 RB : ROAD BORE (DIRECTIONAL BORE)  
 T : TRENCH  
 HD : HAND DIG  
 P : PLOW

Bore to place one 2" duct for 896' hand hole to hand hole

CONTRACT ENGINEER:

**mi-TECH**

4125 N. 124th St. Suite D  
Brookfield, WI 53005

PROJECT LOCATION:

CITY OF WAUWATOSA  
MILWAUKEE COUNTY

**everstream**<sup>TM</sup>  
FASTER FIBER. BETTER BUSINESS.

Lee Smet  
OSP Manager  
324 E WISCONSIN AVE  
SUITE 730  
MILWAUKEE, WI  
(414) 721-1418

DATE: 2-11-2020

ENGINEER: GTK

DRAWN BY: DLK

REVISIONS

DATE	DESCRIPTION	INITIAL
2-3-2020	SPARE CONDUIT NOTE	DLK



SCALE

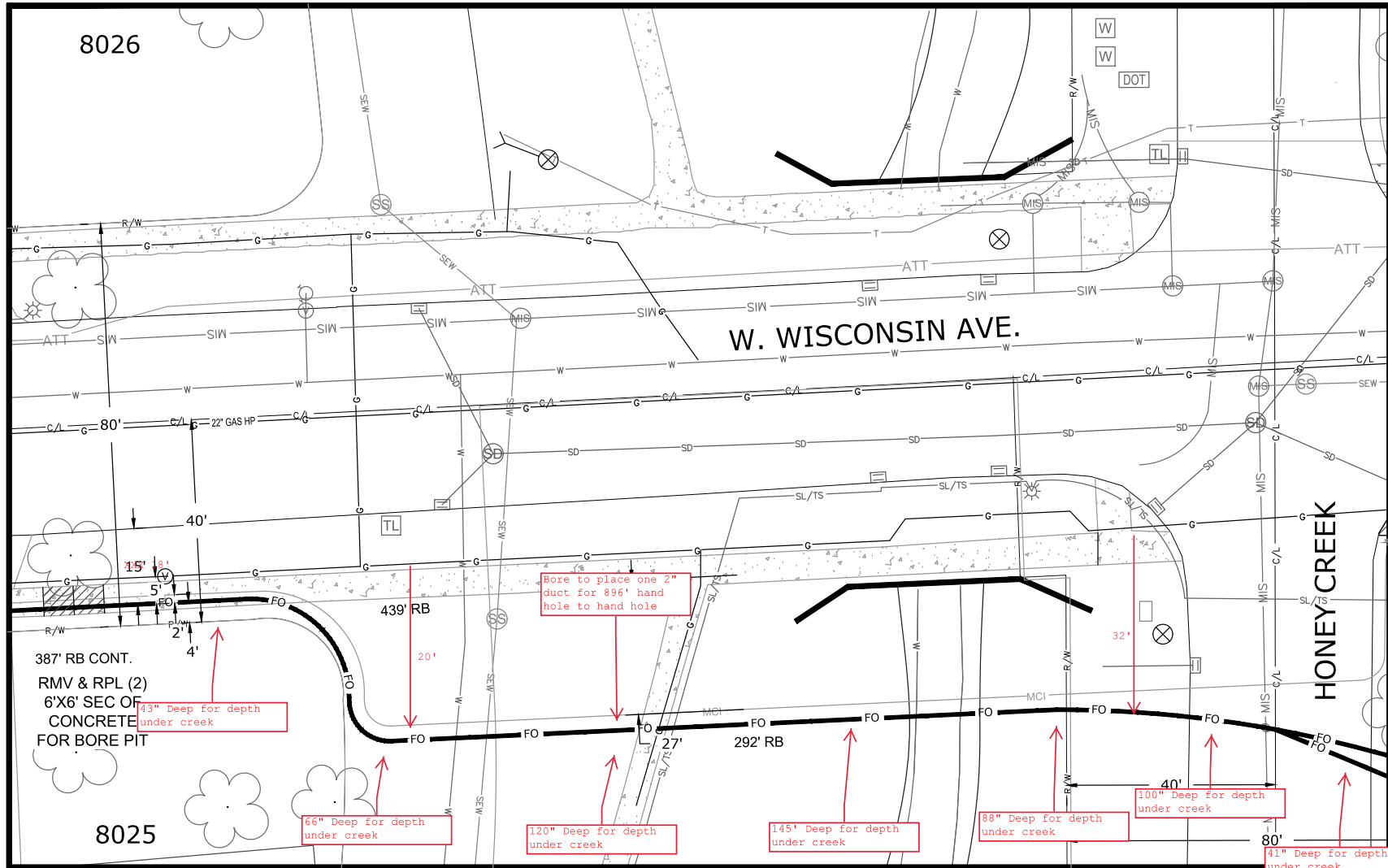
HORIZONTAL: 1"=20'

VERTICAL: 1"=20'

MP TO MP

SHEET 4 OF 13

FILE: MIL22-27



**CONSTRUCTION NOTE:**  
DAYLIGHT WHERE NECESSARY AND ADJUST DEPTH ACCORDINGLY



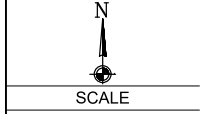
THE UTILITIES SHOWN ON THIS PLAN ARE INDICATED IN ACCORDANCE WITH AVAILABLE RECORDS. THE CONTRACTOR SHALL BE RESPONSIBLE FOR OBTAINING EXACT LOCATIONS AND ELEVATIONS OF ALL UTILITIES FROM THE OWNERS OF THE RESPECTIVE UTILITIES AND FROM FIELD VERIFICATION.

**CONSTRUCTION NOTE:**  
BURY CABLE AT A MINIMUM OF 36" DEPTH UNLESS OTHERWISE NOTED ON PRINTS.

**EVERSTREAM PROPOSES TO BURY (1) FIBER COMMUNICATION CABLE IN A 2" CONDUIT & (1) SPARE 2" CONDUIT FOR CITY OF WAUWATOSA**  
FO FIBER CABLE

**LEGEND**  
TB : TREE BORE(DIRECTIONAL BORE)  
RB : ROAD BORE (DIRECTIONAL BORE)  
T : TRENCH  
HD : HAND DIG  
P : PLOW

REVISIONS		
DATE	DESCRIPTION	INITIAL
2-3-2020	SPARE CONDUIT NOTE	DLK



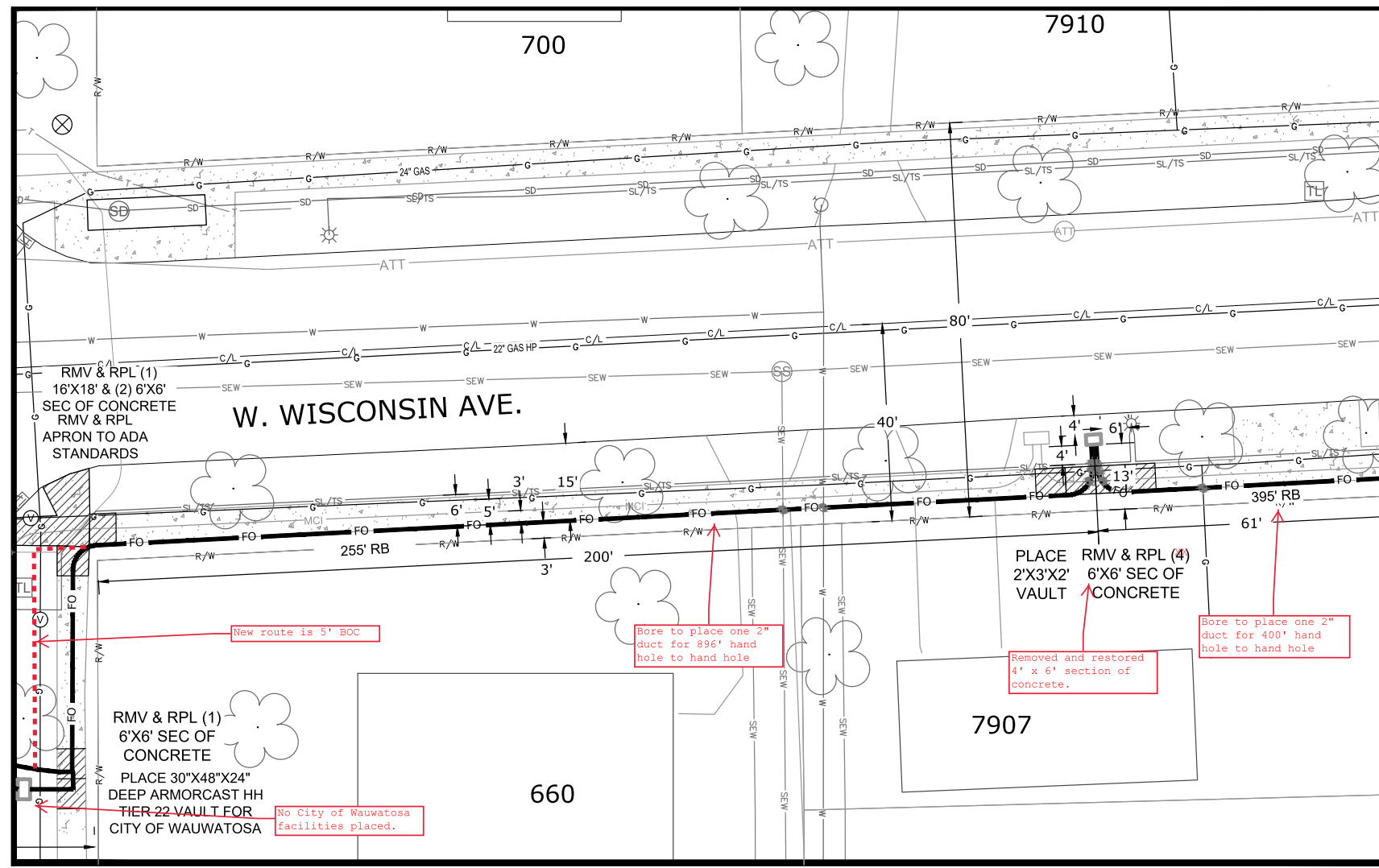
HORIZONTAL: 1"=20'

VERTICAL: 1"=20'

MP TO MP

SHEET 5 OF 13

FILE: MIL22-27



**CONSTRUCTION NOTE:**  
 DAYLIGHT WHERE NECESSARY AND ADJUST DEPTH ACCORDINGLY

= DAYLIGHTING

THE UTILITIES SHOWN ON THIS PLAN ARE INDICATED IN ACCORDANCE WITH AVAILABLE RECORDS. THE CONTRACTOR SHALL BE RESPONSIBLE FOR OBTAINING EXACT LOCATIONS AND ELEVATIONS OF ALL UTILITIES FROM THE OWNERS OF THE RESPECTIVE UTILITIES AND FROM FIELD VERIFICATION.

**CONSTRUCTION NOTE:**  
 BURY CABLE AT A MINIMUM OF 36" DEPTH UNLESS OTHERWISE NOTED ON PRINTS.

**EVERSTREAM PROPOSES TO BURY (1) FIBER COMMUNICATION CABLE IN A 2" CONDUIT & (1) SPARE 2" CONDUIT FOR CITY OF WAUWATOSA**

FO FIBER CABLE

**LEGEND**  
 TB : TREE BORE (DIRECTIONAL BORE)  
 RB : ROAD BORE (DIRECTIONAL BORE)  
 T : TRENCH  
 HD : HAND DIG  
 P : PLOW