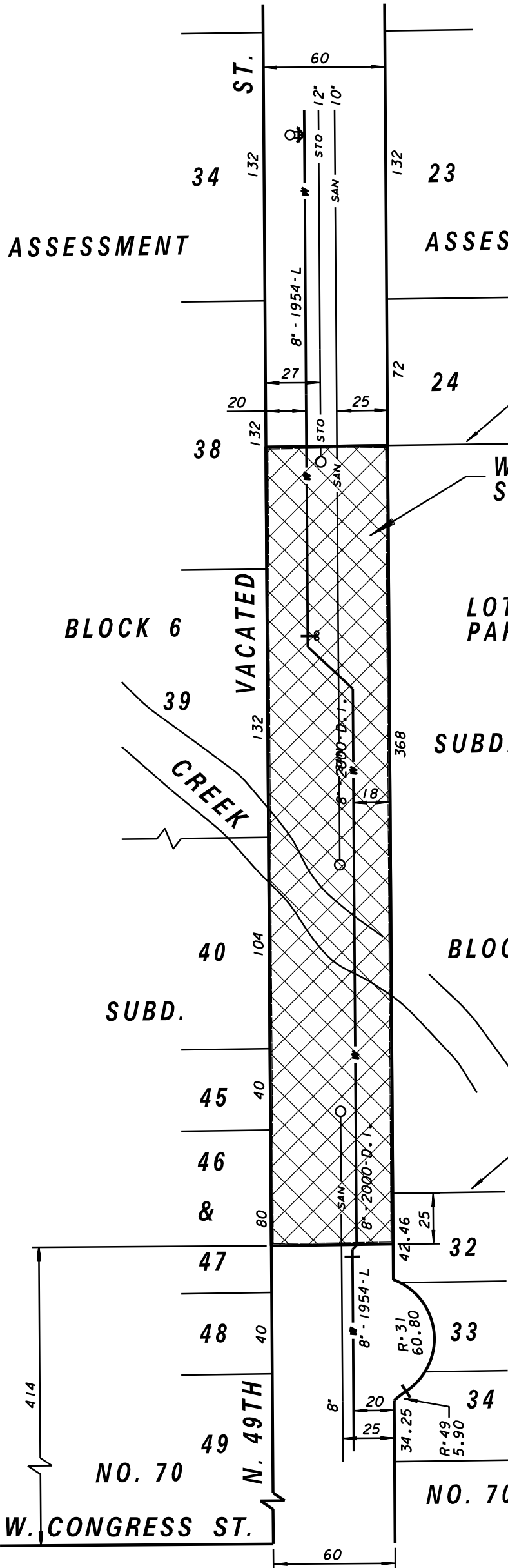


N.E. 1/4 OF SEC. 2, T. 7 N., R. 21 E.



LOTS 25, 27 & 31, AND PART OF LOTS 24 & 26

**WATER EASEMENT W.E. 893
SEWER EASEMENT S.E. 2710**

Milwaukee Water Engineering Department of Public Works Milwaukee, Wisconsin	
WATER EASEMENT	
VACATED N. 49TH ST. 414' N/O W. CONGRESS ST. 807' N/O W. CONGRESS ST.	
IN FROM TO	
SCALE 1" = 50 1/4 SEC. NO. 228 PLAN DATE 12-07-06 DRAWN BY A.P.J. CHECKED BY P.W.P. REVIEWED BY WORK ORDER 0232	APPROVED _____ DATE _____ _____ MAINS DESIGN ENGINEER _____ CHIEF DESIGN ENGINEER _____ SPECIAL DEPUTY COMMISSIONER OF PUBLIC WORKS
SHEET NO. 1 OF 1 PLAN FILE NO. WE893	