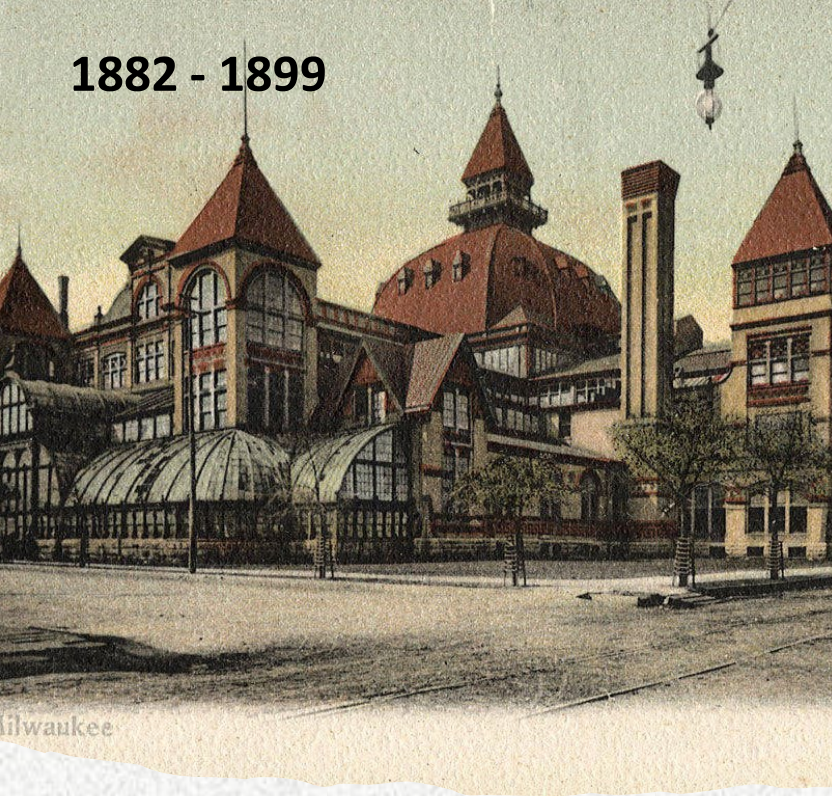


# Milwaukee Public Museum's Future Home





1882 - 1899



1899 - 1964



1964 - 2026



## MPM Evolving

**City Museum**

1882 to 1976



**County Museum**

1976 to 1992



**501(c)3**

1992 - Present







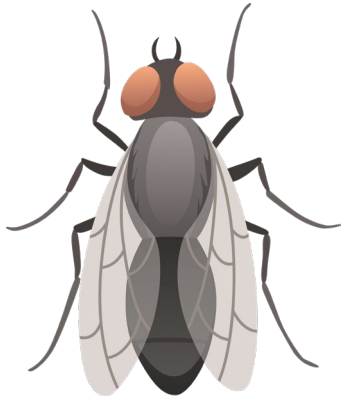
# Packing & Moving







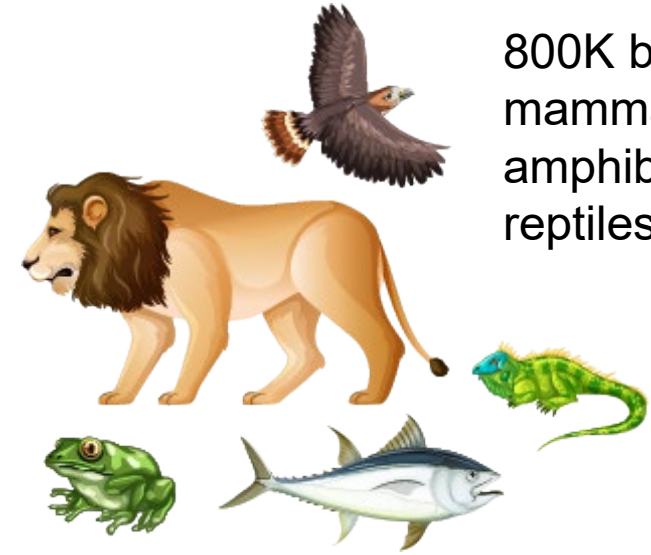




1M+ insects and  
invertebrates



220K cultural objects  
from across the world



800K birds,  
mammals, fish,  
amphibians and  
reptiles

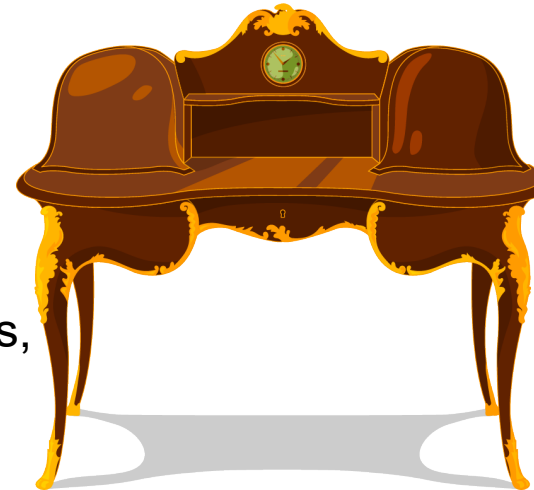


800K fossils



300K plants

280K history objects –  
clothing, furniture, toys,  
decorative arts, typewriters,  
bicycles etc – picture your  
grandma's attic



500K ancient  
history objects  
- pot shards

lots of pot  
shards







# Living in a Dynamic World (LiDW)

FM Case #: 07.01.02.C01

☐ Open Display

☒ Cased



## FM Installation Details

Mount Type

Light Level

## Object Details

Cat# / Acc#

E773, E774, E775, E55155, E39119/ 16760, 10449

Object Name

Gilbert Island (Kiribati) warrior

Dept

Anthropology

MPM Location

3C58

## Conservation Details

Active

Yes - embrittlement, overall stabilization

Cleaning

Full cleaning

Review

## MPM Deinstallation Details

Current Mount Type

On figure, figure attached to platform, platform resting in sand

Deinstallation Equipment Needed

Flatbed, pallet, archival supplies, screwdriver, archival supports, multiple people

Deinstallation Time

16 hrs

## Move Details

☐ Staged

☐ Packed

☐ Deinstalled:

Packing Time: 16 hrs

☐ Cons. Complete:

Process Time: 40 hrs total

☐ Photo'd:

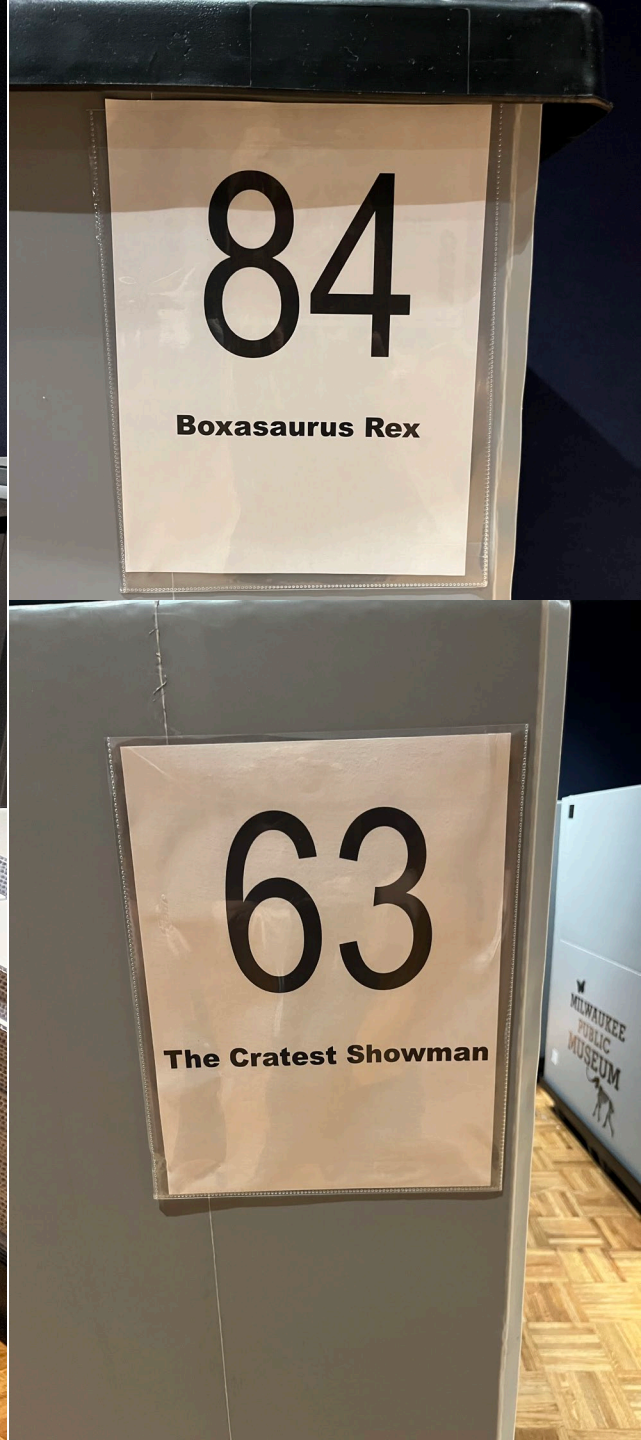
Type of Packing: Palletized and braced, with custom bracing mounts created

☐ Barcoded:

## Other Notes

Glass will have to be removed, which means the entire case will need to be deinstalled. The deinstallation time includes the entire deinstallation of the case. There is a high risk of damage to the object during deinstallation.











# Collections vs. Non-Collections





# Apothecary

- The vast majority of items in the apothecary are part of Milwaukee County's collections.
- A substantial number of these items will be on display in the new museum's Pharmacy exhibit.
- The remaining objects will be moved to storage.





# Candy Store

## Collections Items

- All highlighted items are part of the Milwaukee County collections.
- The blue Peerless Candies tins will be on display in the Haymarket Candy Store in the new museum.





# Candy Store

Non-collections items are:

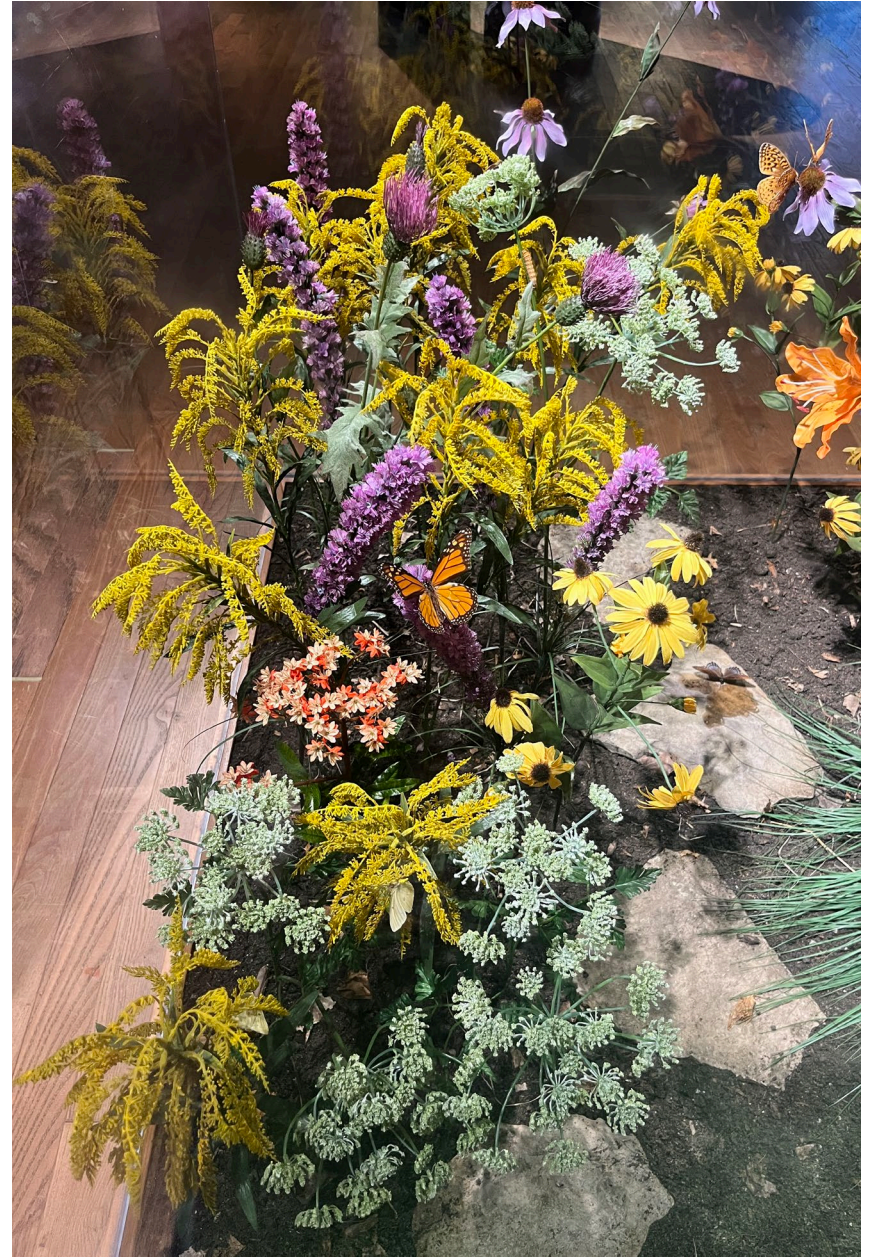
- Candy cigarettes and box they are in
- Bag of candy on scale
- Candy dots
- Wooden stand







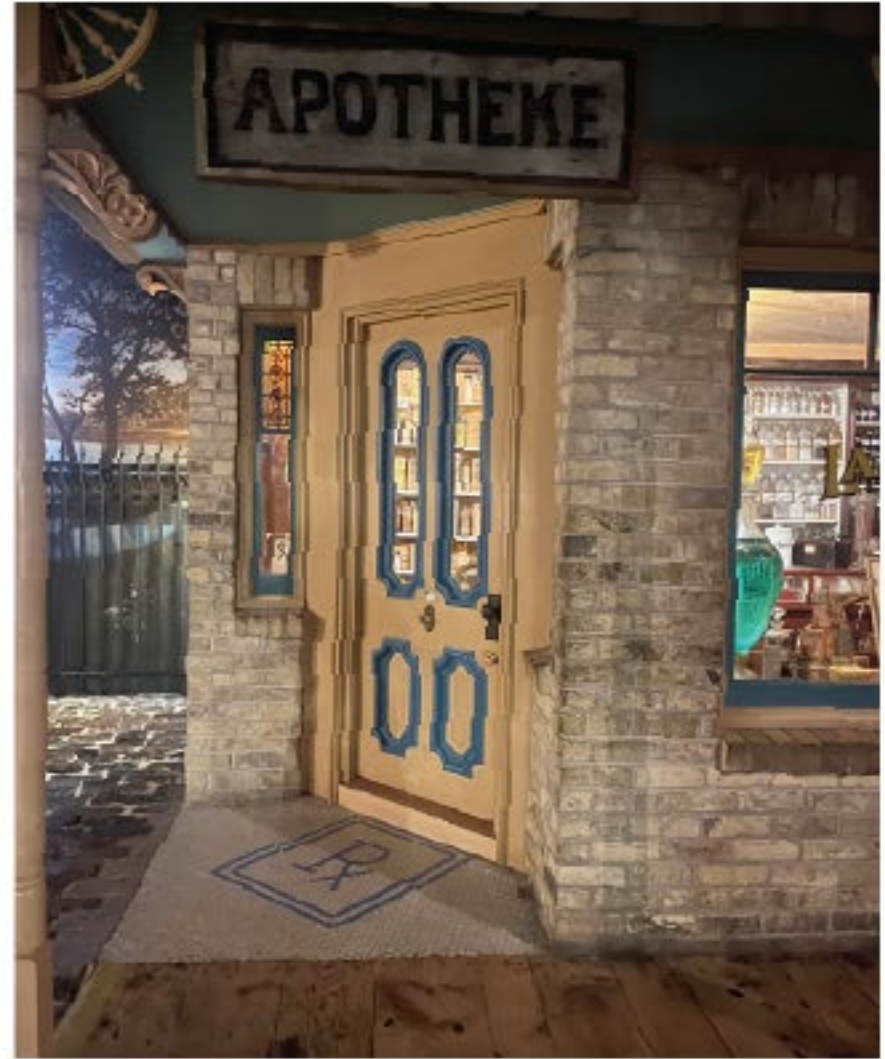






# Façades

- The brick façades of the Apothecary and Candy Store are built-in to the museum building and are therefore, owned by Milwaukee County.





# Disposition Plan







# Guiding Principles

- Transparency
- Public Benefit
- Efficiency
- Public Safety



# Disposition Priority

- Repurposed by MPM
- Milwaukee County Departments
- Museums & Peer Institutions
- Nonprofits (501c3)
- Exhibit Fabrication/Traveling Exhibit Companies
- Public Sale (auction/RFP/online)
- Final Disposal





# Approximate Timeline

- **Q1 2026** – Detailed timeline to County Board
- **Q2/Q3 2026** – Tours for each eligible group
- **Q4 2027** – Public auction after move
- **End of 2027/Beginning of 2028** – Final clean-out



# Public Communication

- Joint Press Release
- FAQ page
- County Board file in March
- MPM website updates

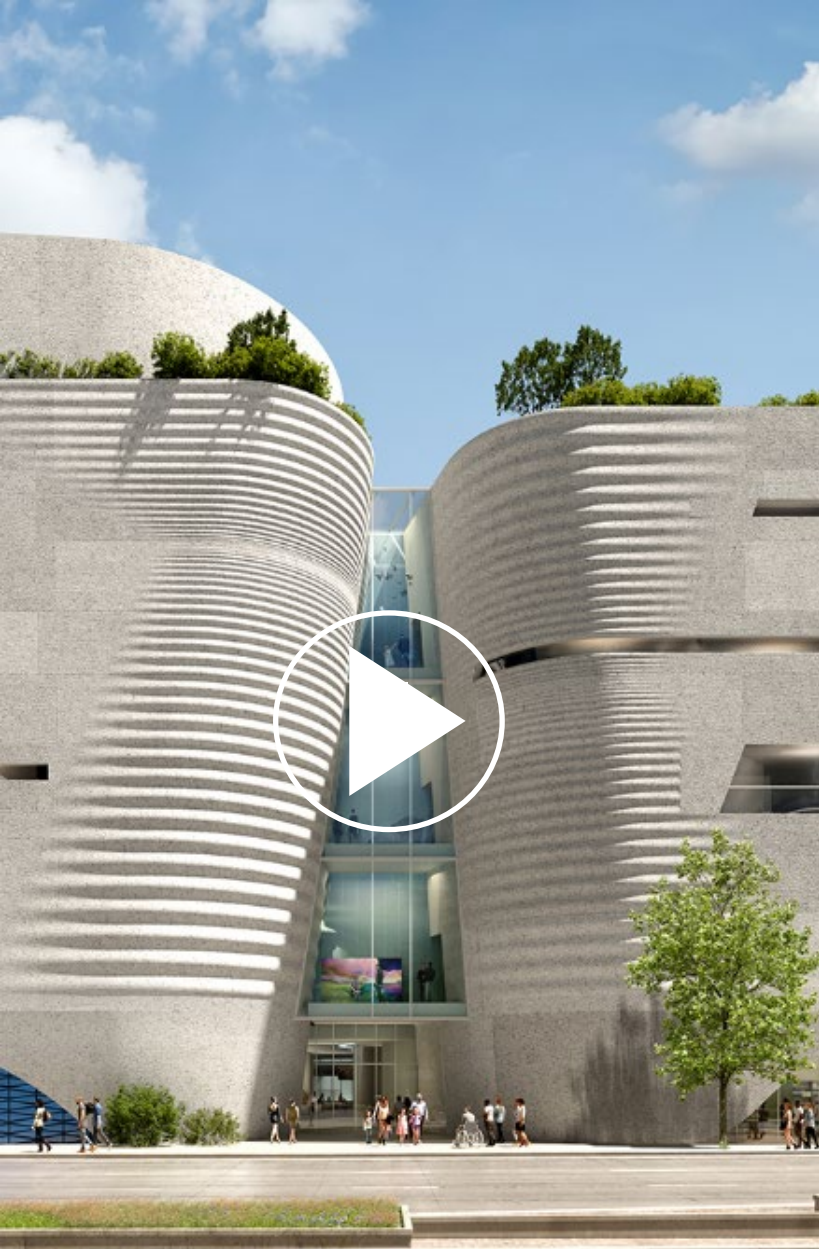




# Resources







Nature & Culture  
Museum of Wisconsin



Construction Update



What's Happening to the  
Streets of Old Milwaukee?



Visit  
**[mpm.edu/future](https://mpm.edu/future)**

