



OFFICE OF THE COUNTY EXECUTIVE  
*Milwaukee County*  
CHRIS ABELE • COUNTY EXECUTIVE

February 29, 2016

Julie Siegel, Village President  
Village of Whitefish Bay  
5300 W. Marlborough Dr.  
Whitefish Bay, WI 53217

President Siegel,

On January 25, 2016 I forwarded a list of Milwaukee County Parks in your community that needed a zoning clarification. Thank you to both you and your staff for moving that request forward.

Now that we have a path forward on the proper zoning of parks, our staff has reviewed the remaining inventory of land that is owned by Milwaukee County and maintained by our Department of Parks, Recreation and Culture. This list of parcels includes land that is used for parkways, trails and environmental management.

After reviewing this list, and your community's zoning code, we believe it is appropriate to have these parcels rezoned as well. Consequently, Milwaukee County formally requests that the attached parcels be rezoned as 4B Park Districts.

Our staff will continue to work with your staff to submit any follow up materials necessary to complete the rezoning. If you have any questions, please do not hesitate to contact Teig Whaley-Smith, Director, Department of Administrative Services at 414-278-4808, [teig.whaley-smith@milwaukeecountywi.gov](mailto:teig.whaley-smith@milwaukeecountywi.gov).

Sincerely,

Chris Abele  
Milwaukee County Executive

Attachment

cc: Steve Sheiffer, Village Manager

**Parcel #**   **Parcel is Adjacent to or Part of the Following Parkway:**  
2351380000 East Side Bike Trail

4B Park District



OFFICE OF THE COUNTY EXECUTIVE  
*Milwaukee County*  
CHRIS ABELE • COUNTY EXECUTIVE

February 29, 2016

Village President James M. Birmingham  
Village of Greendale  
6500 Northway  
Greendale, WI 53129

President Birmingham,

On January 25, 2016 I forwarded a list of Milwaukee County Parks in your community that needed a zoning clarification. Thank you to both you and your staff for moving that request forward.

Now that we have a path forward on the proper zoning of parks, our staff has reviewed the remaining inventory of land that is owned by Milwaukee County and maintained by our Department of Parks, Recreation and Culture. This list of parcels includes land that is used for parkways, trails and environmental management.

After reviewing this list, and your community's zoning code, we believe it is appropriate to have these parcels rezoned as well. Consequently, Milwaukee County formally requests that the attached parcels be rezoned as Parks District.

Our staff will continue to work with your staff to submit any follow up materials necessary to complete the rezoning. If you have any questions, please do not hesitate to contact Teig Whaley-Smith, Director, Department of Administrative Services at 414-278-4808, [teig.whaley-smith@milwaukeecountywi.gov](mailto:teig.whaley-smith@milwaukeecountywi.gov).

Sincerely,

Chris Abele  
Milwaukee County Executive

Attachment

cc: Todd K. Michaels, Village Manager

**Parcel #   Parcel is Adjacent to or Part of the Following Parkway:**

Change to Parks District

- 6519988002 Root River Parkway
- 6519988002 Root River Parkway
- 6519988002 Dale Creek Parkway
- 6519988002 Root River Parkway
- 7079997000 Root River Parkway
- 6619897011 Trimborn Farm
- 6519988002 Root River Parkway
- 7079998000 Root River Parkway
- 6519988002 Dale Creek Parkway
- 6519988002 Dale Creek Parkway
- 6519988002 Dale Creek Parkway
- 6519988002 Root River Parkway
- 6519988002 Dale Creek Parkway



OFFICE OF THE COUNTY EXECUTIVE  
*Milwaukee County*  
CHRIS ABELE • COUNTY EXECUTIVE

February 29, 2016

Mayor Steve Olson  
City of Franklin  
9229 W. Loomis Rd.  
Franklin, WI 53132

Mayor Olson,

On January 25, 2016 I forwarded a list of Milwaukee County Parks in your community that needed a zoning clarification. Thank you to both you and your staff for moving that request forward.

Now that we have a path forward on the proper zoning of parks, our staff has reviewed the remaining inventory of land that is owned by Milwaukee County and maintained by our Department of Parks, Recreation and Culture. This list of parcels includes land that is used for parkways, trails and environmental management.

After reviewing this list, and your community's zoning code, we believe it is appropriate to have these parcels rezoned as well. Consequently, Milwaukee County formally requests that the attached parcels be rezoned as P-1 Parks.

Our staff will continue to work with your staff to submit any follow up materials necessary to complete the rezoning. If you have any questions, please do not hesitate to contact Teig Whaley-Smith, Director, Department of Administrative Services at 414-278-4808, [teig.whaley-smith@milwaukeecountywi.gov](mailto:teig.whaley-smith@milwaukeecountywi.gov).

Sincerely,

Chris Abele  
Milwaukee County Executive

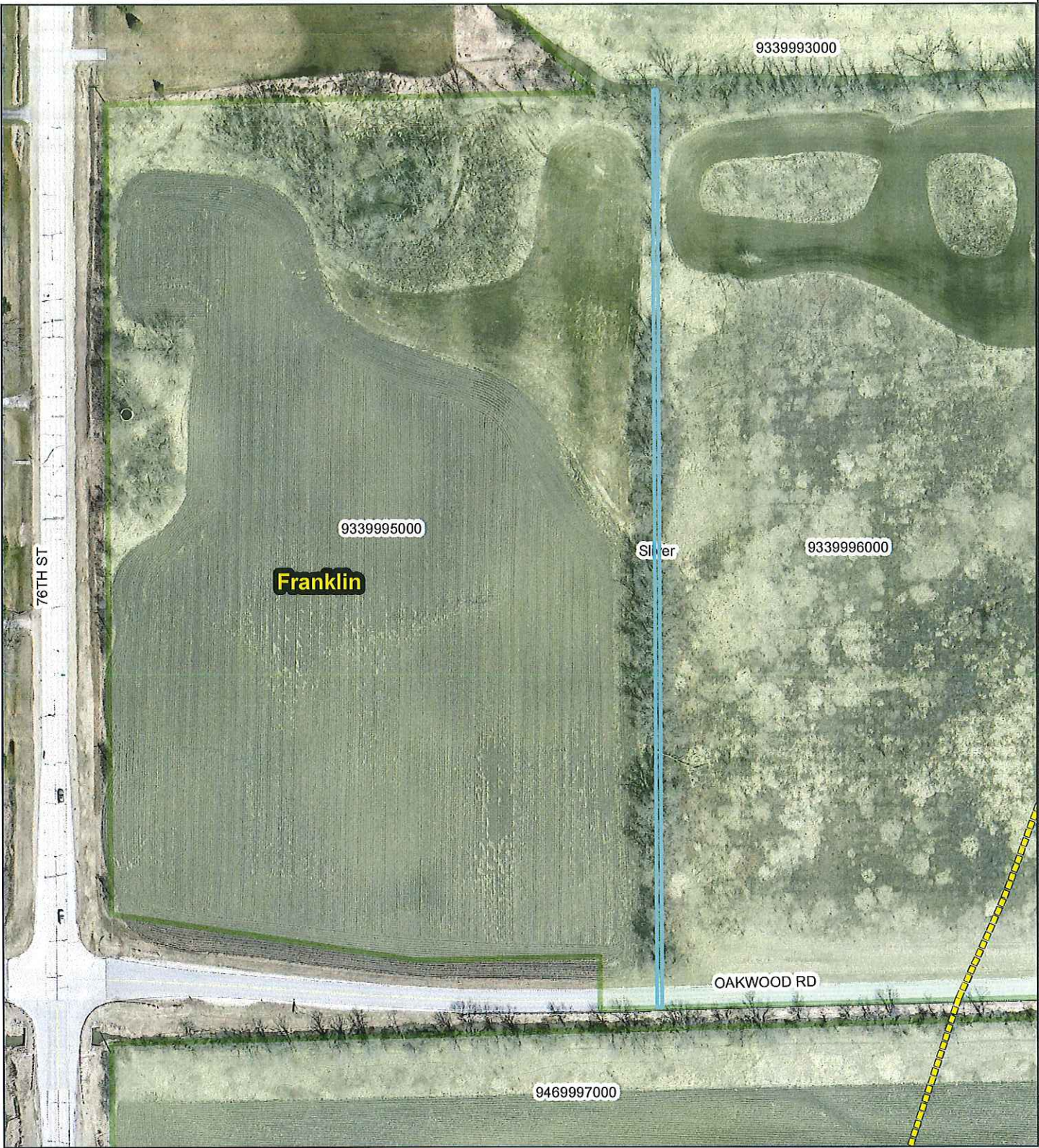
Attachment

cc: Mark Lubarda, Director of Administration

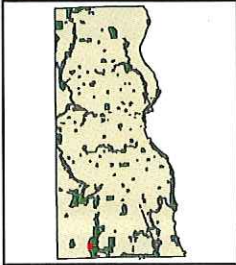
**Parcel # Parcel is Adjacent to or Part of the Following Parkway:**

**Change to P-1**

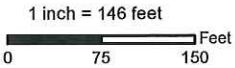
7579981000 Root River Parkway  
8519995007 Root River Parkway  
9839995000 Root River Parkway  
8519994001 Root River Parkway  
9489999001 Root River Parkway  
8839999002 Root River Parkway  
9339993000 Root River Parkway  
9339989000 Root River Parkway  
8989998000 Root River Parkway  
7118996005 Root River Parkway  
Exhibit Root River Parkway  
9339990002 Root River Parkway  
8519994001 Root River Parkway  
7088999000 Root River Parkway  
9339996000 Root River Parkway  
8839999004 Root River Parkway  
9339995000 Root River Parkway  
9839996001 Root River Parkway  
7118997000 Root River Parkway  
8059987000 Root River Parkway  
8529999002 Root River Parkway  
8519994004 Root River Parkway  
9469997000 Root River Parkway  
8369998001 Root River Parkway  
9339999001 Root River Parkway  
9339987000 Root River Parkway  
9509998001 Root River Parkway  
7579978000 Root River Parkway  
7909999000 Root River Parkway  
9339991000 Root River Parkway  
9809998000 Root River Parkway  
9329992002 Root River Parkway  
7088996000 Root River Parkway  
9339992000 Root River Parkway  
7579979000 Root River Parkway  
8979999000 Root River Parkway  
8519995004 Root River Parkway  
9339988000 Root River Parkway  
9829997000 Root River Parkway  
7429995000 Root River Parkway  
7579983000 Root River Parkway  
8519999001 Root River Parkway  
9479998000 Root River Parkway  
8529999001 Root River Parkway  
8829987001 Root River Parkway



Root River Parkway - Franklin - Parcel without Tax Key #



- Legend**
- Zoning By Parcel  
cntypublish.GISADMIN.TRN\_MCAMLIS\_STR\_CLINE
    - OakLeafTrail\_Planned
    - Milwaukee County Parks
  - Municipal Subdivisions**
  - NAME**
  - Franklin



2-22-2016





OFFICE OF THE COUNTY EXECUTIVE  
*Milwaukee County*  
CHRIS ABELE • COUNTY EXECUTIVE

February 29, 2016

Mayor Kathleen Ehley  
City of Wauwatosa  
7725 W. North Avenue  
Wauwatosa, WI 53213

Mayor Ehley,

On January 25, 2016 I forwarded a list of Milwaukee County Parks in your community that needed a zoning clarification. Thank you to both you and your staff for moving that request forward.

Now that we have a path forward on the proper zoning of parks, our staff has reviewed the remaining inventory of land that is owned by Milwaukee County and maintained by our Department of Parks, Recreation and Culture. This list of parcels includes land that is used for parkways, trails and environmental management.

After reviewing this list, and your community's zoning code, we believe it is appropriate to have these parcels rezoned as well. Consequently, Milwaukee County formally requests that the attached parcels be rezoned as SP-POS.

Our staff will continue to work with your staff to submit any follow up materials necessary to complete the rezoning. If you have any questions, please do not hesitate to contact Teig Whaley-Smith, Director, Department of Administrative Services at 414-278-4808, [teig.whaley-smith@milwaukeecountywi.gov](mailto:teig.whaley-smith@milwaukeecountywi.gov).

Sincerely,

Chris Abele  
Milwaukee County Executive

Attachment

cc: James Archambo, City Administrator



<u>Parcel #</u>	<u>Parcel is Adjacent to or Part of the Following Parkway:</u>	<u>Change to SP-POS</u>
3820001000	Honey Creek Parkway	
3710109000	Menomonee River Parkway	
3700501006	Honey Creek Parkway	
3759991000	Underwood Creek Parkway	
3780102000	Underwood Creek Parkway	
3780008000	Underwood Creek Parkway	
4120224000	Underwood Creek Parkway	
4120025003	Underwood Creek Parkway	
2600391000	Grantosa Creek Parkway	
3749999022	Underwood Creek Parkway	
2600391000	Grantosa Creek Parkway	
3749999022	Underwood Creek Parkway	
Exhibit	Menomonee River Parkway	
Exhibit	Menomonee River Parkway	



OFFICE OF THE COUNTY EXECUTIVE  
*Milwaukee County*  
CHRIS ABELE • COUNTY EXECUTIVE

February 29, 2016

Mayor Erik Brooks  
City of South Milwaukee  
2424 15<sup>th</sup> Ave.  
South Milwaukee, WI 53172

Mayor Brooks,

On January 25, 2016 I forwarded a list of Milwaukee County Parks in your community that needed a zoning clarification. Thank you to both you and your staff for moving that request forward.

Now that we have a path forward on the proper zoning of parks, our staff has reviewed the remaining inventory of land that is owned by Milwaukee County and maintained by our Department of Parks, Recreation and Culture. This list of parcels includes land that is used for parkways, trails and environmental management.

After reviewing this list, and your community's zoning code, we believe it is appropriate to have these parcels rezoned as well. Consequently, Milwaukee County formally requests that the attached parcels be rezoned as Parks District.

Our staff will continue to work with your staff to submit any follow up materials necessary to complete the rezoning. If you have any questions, please do not hesitate to contact Teig Whaley-Smith, Director, Department of Administrative Services at 414-278-4808, [teig.whaley-smith@milwaukeecountywi.gov](mailto:teig.whaley-smith@milwaukeecountywi.gov).

Sincerely,

Chris Abele  
Milwaukee County Executive

Attachment

cc: Tamara Mayzik, City Administrator

**Parcel #    Parcel is Adjacent to or Part of the Following Parkway:**

Change to Parks District

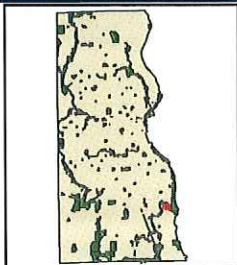
- 7280192000 Oak Creek Parkway
- 7230073000 Oak Creek Parkway
- 7690222000 Oak Creek Parkway
- 7300184000 Oak Creek Parkway
- 7230067000 Oak Creek Parkway
- 7690088000 Oak Creek Parkway
- 7289958000 Oak Creek Parkway
- 7690162000 Oak Creek Parkway
- 7780023000 Oak Creek Parkway
- 7690081000 Oak Creek Parkway
- 7300234000 Oak Creek Parkway
- 7690094000 Oak Creek Parkway
- 7690148000 Oak Creek Parkway
- 7700152000 Oak Creek Parkway
- 7700076000 Oak Creek Parkway
- 7780028001 Oak Creek Parkway
- 7230067000 Oak Creek Parkway
- 7690203000 Oak Creek Parkway
- 7230083000 Oak Creek Parkway
- 7240140001 Oak Creek Parkway
- 7729979000 Oak Creek Parkway
- 7300113000 Oak Creek Parkway
- None            Oak Creek Parkway
- 7240140001 Oak Creek Parkway
- 7690202000 Oak Creek Parkway
- 7280163000 Oak Creek Parkway
- 7690086000 Oak Creek Parkway
- 7280195000 Oak Creek Parkway
- 7230073000 Oak Creek Parkway
- 7300118000 Oak Creek Parkway
- 7690106000 Oak Creek Parkway
- 7700277001 Oak Creek Parkway
- 7780024000 Oak Creek Parkway
- 7280163000 Oak Creek Parkway
- 7300154000 Oak Creek Parkway
- 7300301000 Oak Creek Parkway
- 7780199000 Oak Creek Parkway
- 7690159000 Oak Creek Parkway
- 7780196000 Oak Creek Parkway
- 7230083000 Oak Creek Parkway
- 7300260000 Oak Creek Parkway
- 7780035000 Oak Creek Parkway
- 7309999000 Oak Creek Parkway
- 7700152000 Oak Creek Parkway
- 7780028001 Oak Creek Parkway

7780035000 Oak Creek Parkway  
7700267000 Oak Creek Parkway  
7759996000 Oak Creek Parkway  
7240140001 Oak Creek Parkway  
7280164000 Oak Creek Parkway  
7230083000 Oak Creek Parkway  
7289923000 Oak Creek Parkway  
7690093000 Oak Creek Parkway  
7230083000 Oak Creek Parkway  
7690086000 Oak Creek Parkway  
7300289000 Oak Creek Parkway  
7239991000 Oak Creek Parkway  
7289923000 Oak Creek Parkway  
Exhibit Oak Creek Parkway  
7710520000 Oak Creek Parkway  
7690325000 Oak Creek Parkway  
7300092000 Oak Creek Parkway  
7700075000 Oak Creek Parkway  
7700147000 Oak Creek Parkway  
7729977000 Oak Creek Parkway  
7780024000 Oak Creek Parkway  
7230068000 Oak Creek Parkway  
7690203000 Oak Creek Parkway  
7300148000 Oak Creek Parkway  
7300267000 Oak Creek Parkway  
7690159000 Oak Creek Parkway  
7780198000 Oak Creek Parkway  
7780065000 Oak Creek Parkway  
7759996000 Oak Creek Parkway  
7230068000 Oak Creek Parkway  
7690202000 Oak Creek Parkway  
7690087000 Oak Creek Parkway  
7280163000 Oak Creek Parkway  
7300290000 Oak Creek Parkway  
7300226000 Oak Creek Parkway  
7690325000 Oak Creek Parkway  
7230134000 Oak Creek Parkway  
7690081000 Oak Creek Parkway  
7300301000 Oak Creek Parkway  
7700147000 Oak Creek Parkway  
7300093000 Oak Creek Parkway  
7700075000 Oak Creek Parkway  
7780199000 Oak Creek Parkway  
7690162000 Oak Creek Parkway  
7780068000 Oak Creek Parkway  
7719990000 Oak Creek Parkway  
7729978000 Oak Creek Parkway

7700267000 Oak Creek Parkway  
7229972000 Oak Creek Parkway  
7230083000 Oak Creek Parkway  
7300199000 Oak Creek Parkway  
7690093000 Oak Creek Parkway  
7780027000 Oak Creek Parkway  
7780217000 Oak Creek Parkway

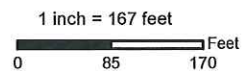


Oak Creek Parkway - South Milwaukee - 2 Parcel without Tax Key #s



**Legend**

- Zoning By Parcel  
cntypublish.GISADMIN.TRN\_MCAMLIS\_STR\_CLINE
- OLT\_Existing
- ▭ OakLeafTrail\_Planned
- ▭ Milwaukee County Parks
- Municipal Subdivisions**
- NAME**
- ▭ South Milwaukee



1 inch = 167 feet



2-22-2016





OFFICE OF THE COUNTY EXECUTIVE  
*Milwaukee County*  
CHRIS ABELE • COUNTY EXECUTIVE

February 29, 2016

Mayor Thomas Barrett  
Milwaukee City Hall  
200 E. Wells St. Rm 205  
Milwaukee, WI 53202

Mayor Barrett,

On January 25, 2016 I forwarded a list of Milwaukee County Parks in your community that needed a zoning clarification. Thank you to both you and your staff for moving that request forward.

Now that we have a path forward on the proper zoning of parks, our staff has reviewed the remaining inventory of land that is owned by Milwaukee County and maintained by our Department of Parks, Recreation and Culture. This list of parcels includes land that is used for parkways, trails and environmental management.

After reviewing this list, and your community's zoning code, we believe it is appropriate to have these parcels rezoned as well. Consequently, Milwaukee County formally requests that the attached parcels be rezoned as Parks District.

Our staff will continue to work with your staff to submit any follow up materials necessary to complete the rezoning. If you have any questions, please do not hesitate to contact Teig Whaley-Smith, Director, Department of Administrative Services at 414-278-4808, [teig.whaley-smith@milwaukeecountywi.gov](mailto:teig.whaley-smith@milwaukeecountywi.gov).

Sincerely,

Chris Abele  
Milwaukee County Executive

Attachment

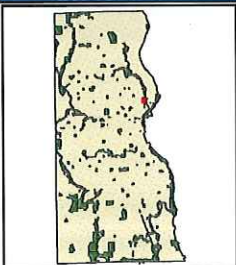
cc: Sharon Robinson, Director, Dept. of Administration

<u>Parcel #</u>	<u>Parcel is Adjacent to or Part of the Following Parkway:</u>	Change to PK
Exhibit	Milwaukee River Parkway	
3201526000	East Side Bike Trail	
1960019000	Milwaukee River Parkway	
3209979000	Milwaukee River Parkway	
1959917000	Former UP ROW	
2039997100	Former UP ROW	
1969990000	Former UP ROW	
1960031000	Milwaukee River Parkway	
1960004000	Milwaukee River Parkway	
3500823121	Johnsons	
39998000	Little Menomonee River Parkway	
3209999111	Milwaukee River Parkway	
341431000	Little Menomonee River Parkway	
1479981110	Menomonee River Parkway	
1960005000	Milwaukee River Parkway	
1960032000	Milwaukee River Parkway	
Exhibit	Menomonee River Parkway	
Exhibit	Menomonee River Parkway	
Exhibit	Bradford Beach	
Exhibit	Kinnickinnic River Parkway	
Exhibit	Kinnickinnic River Parkway	
Exhibit	Kinnickinnic River Parkway	
Exhibit	Story Parkway	





Milwaukee River Parkway - Milwaukee - Parcel without Tax Key #



Legend

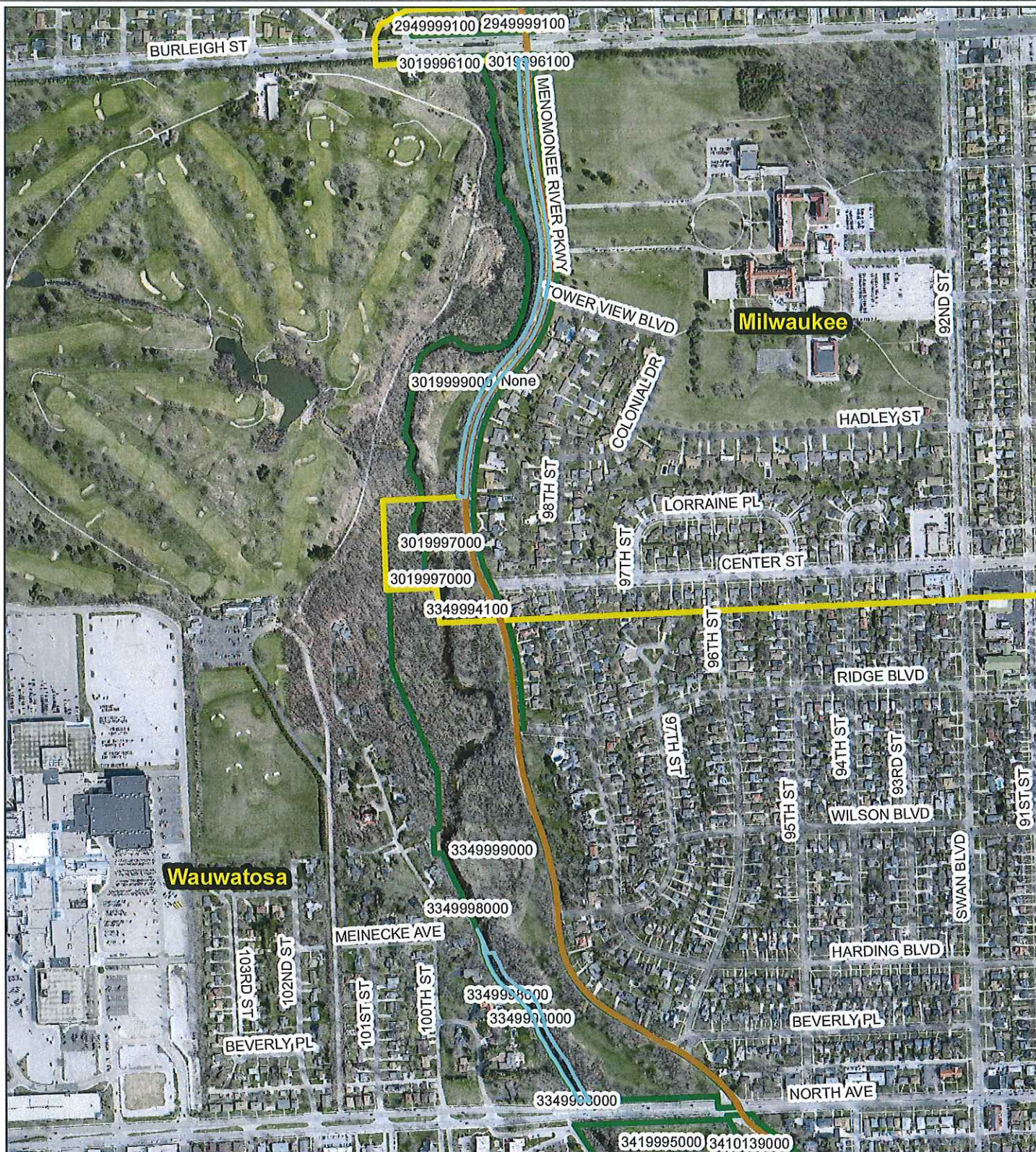
- Zoning By Parcel  
cntypublish.GISADMIN.TRN\_MCAMLIS\_STR\_CLINE
- OakLeafTrail\_Planned
- Milwaukee County Parks
- Municipal Subdivisions
- NAME
- Milwaukee

1 inch = 125 feet  
0 62.5 125 Feet

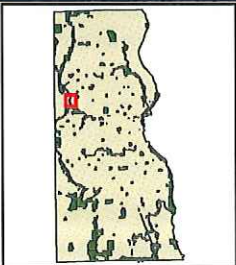


2-22-2016





Menomonee River Parkway - Parcels without Tax Key #



**Legend**

- Zoning By Parcel  
cntypublish.GISADMIN.TRN\_MCAMLIS\_STR\_CLINE
- OLT\_Existing
- OakLeafTrail\_Planned
- Milwaukee County Parks

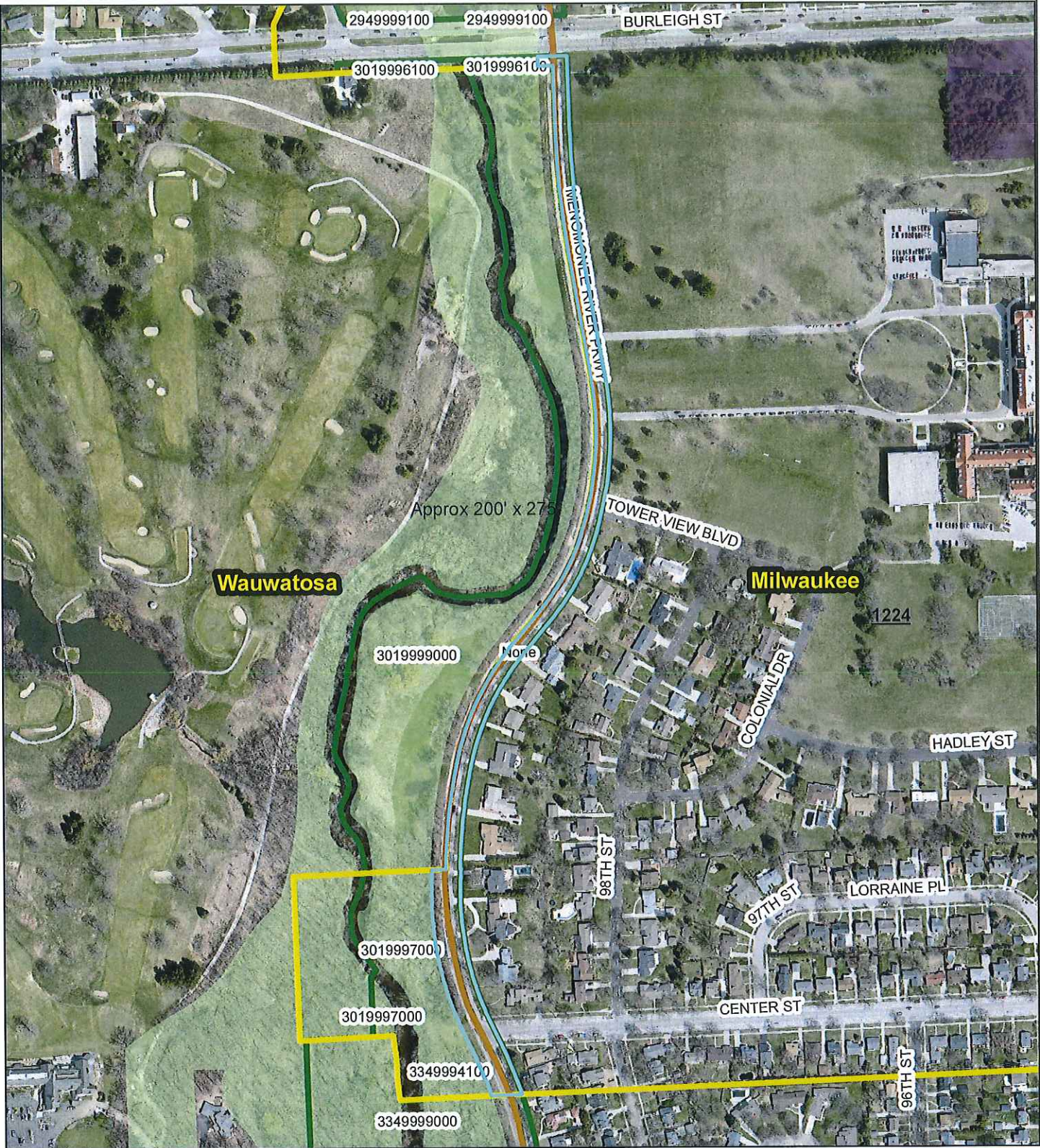
1 inch = 666 feet  

 0 345 690 Feet

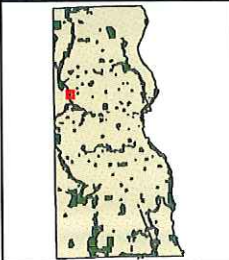


2-22-2016



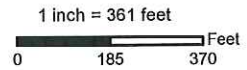


Menomonee River Parkway - Parcel without Tax Key #



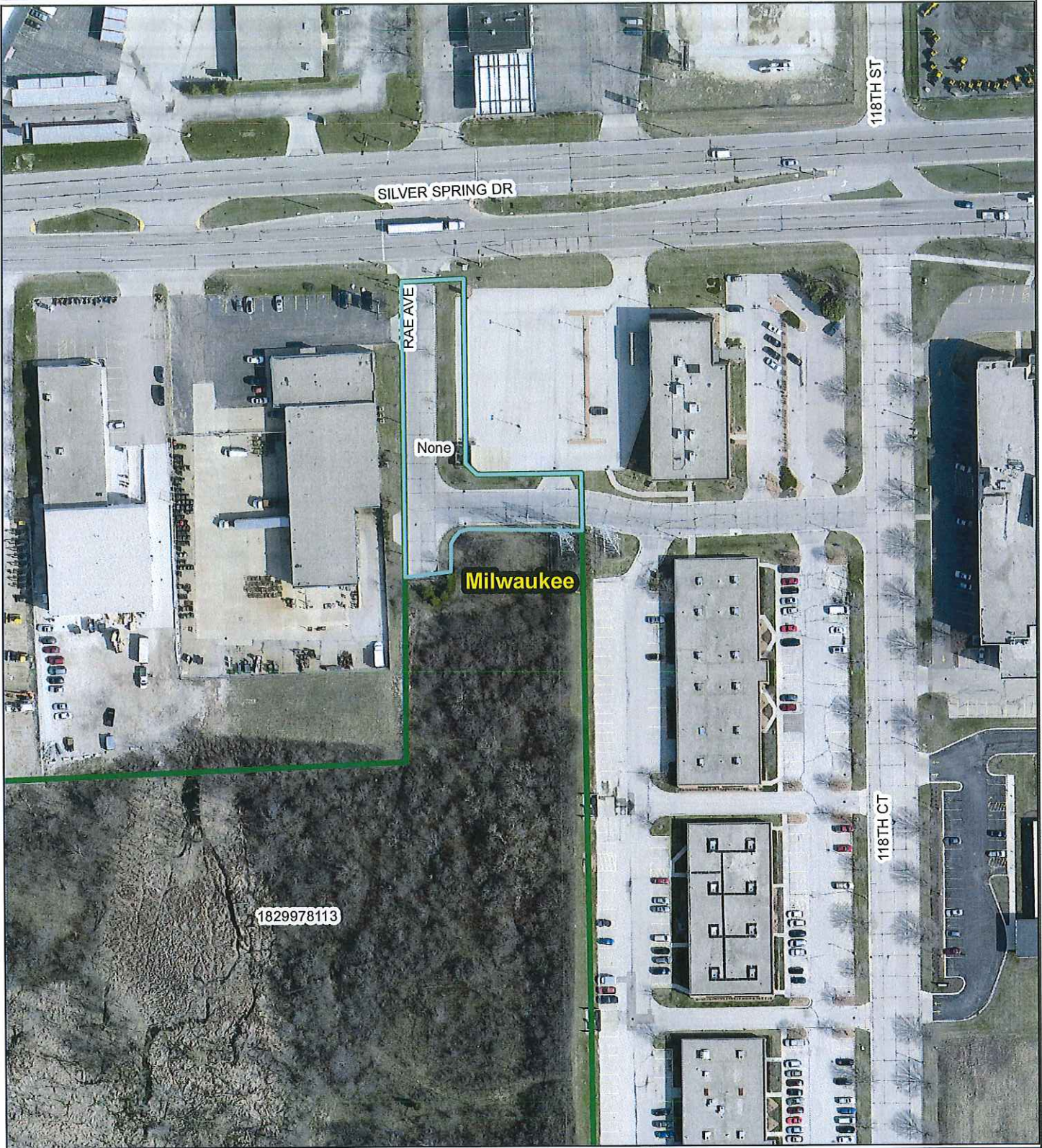
**Legend**

- Zoning By Parcel  
cntypublish.GISADMIN.TRN\_MCAMLIS\_STR\_CLINE
- OLT\_Existing
- OakLeafTrail\_Planned
- Milwaukee County Parks

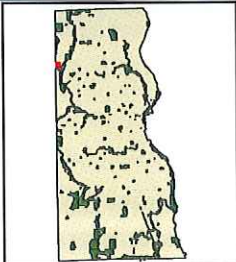


2-22-2016



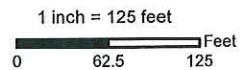


Menomonee River Parkway - Parcel without Tax Key #



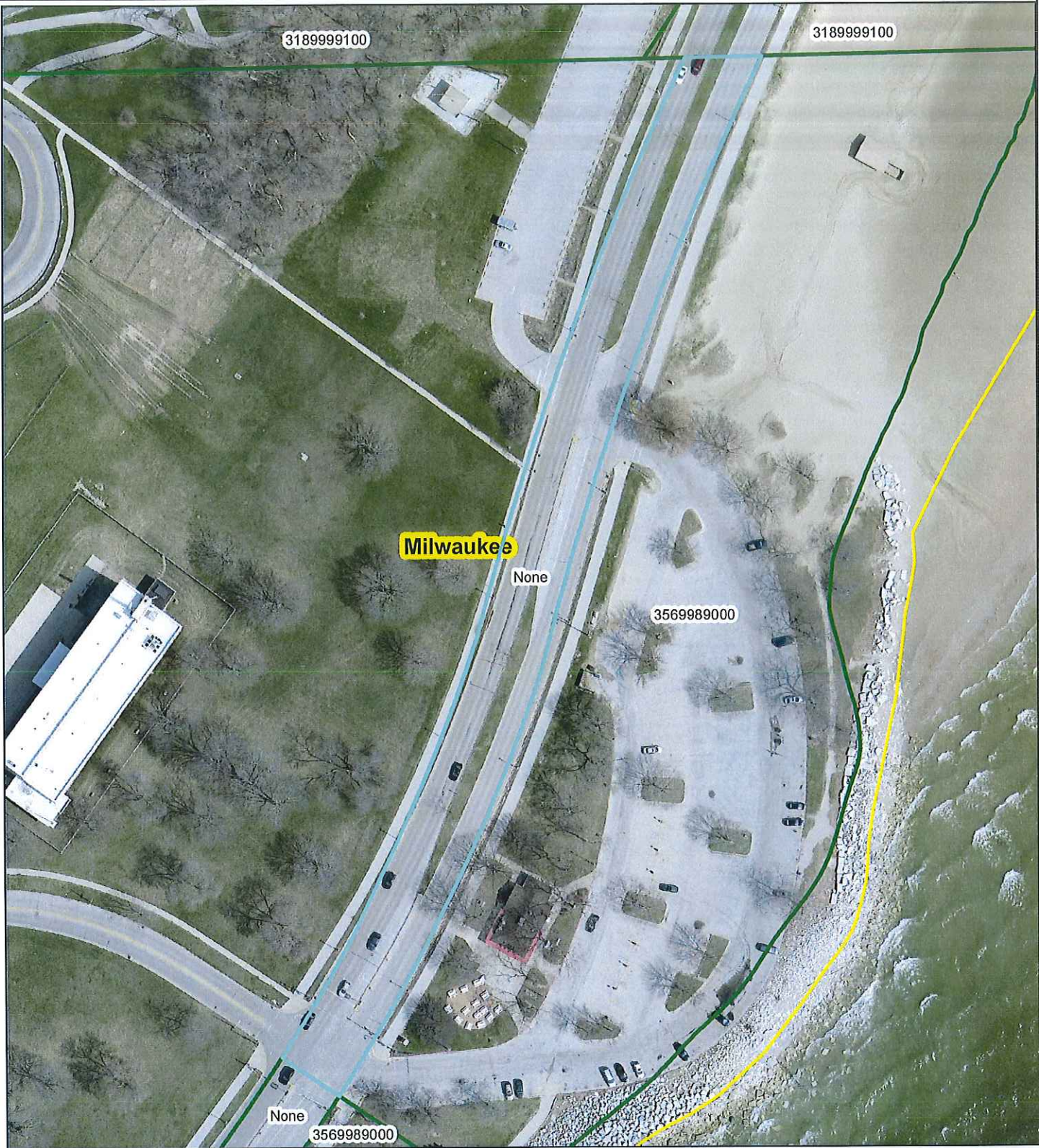
**Legend**

- Zoning By Parcel
- cntypublish.GISADMIN.TRN\_MCAMLIS\_STR\_CLINE
- Milwaukee County Parks

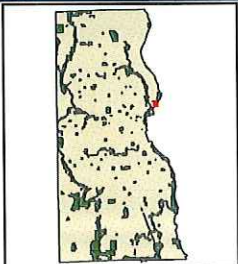


2-22-2016





Bradford Beach Parcel - No Tax Key



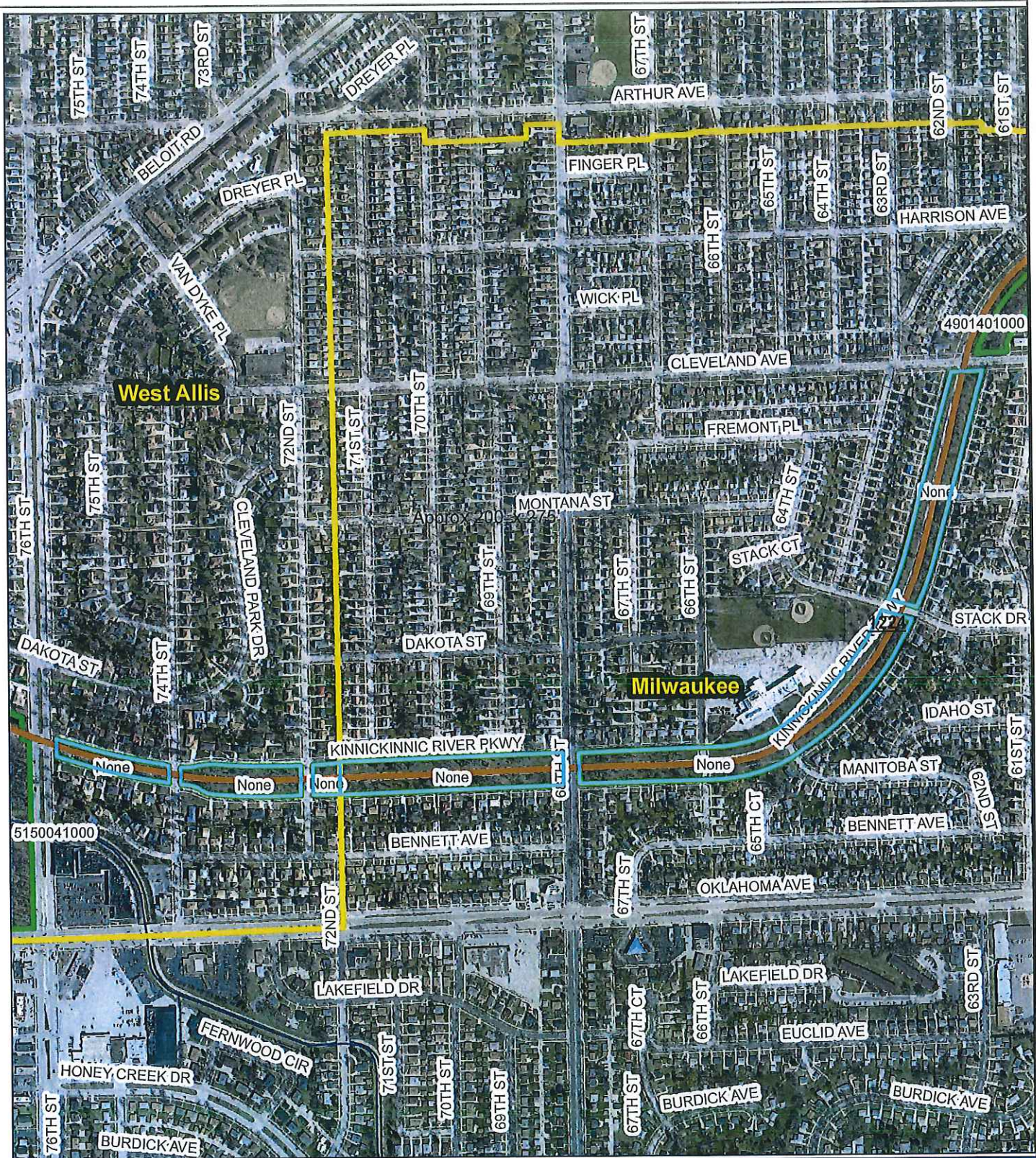
**Legend**  
█ Park Parcels  
 Milwaukee County Parks

1 inch = 111 feet  
 0 55 110 Feet

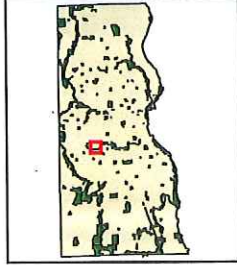


2-29-2016

**MILWAUKEE COUNTY**  
**PARKS**



Kinnickinnic River Parkway - Parcels without Tax Key #s



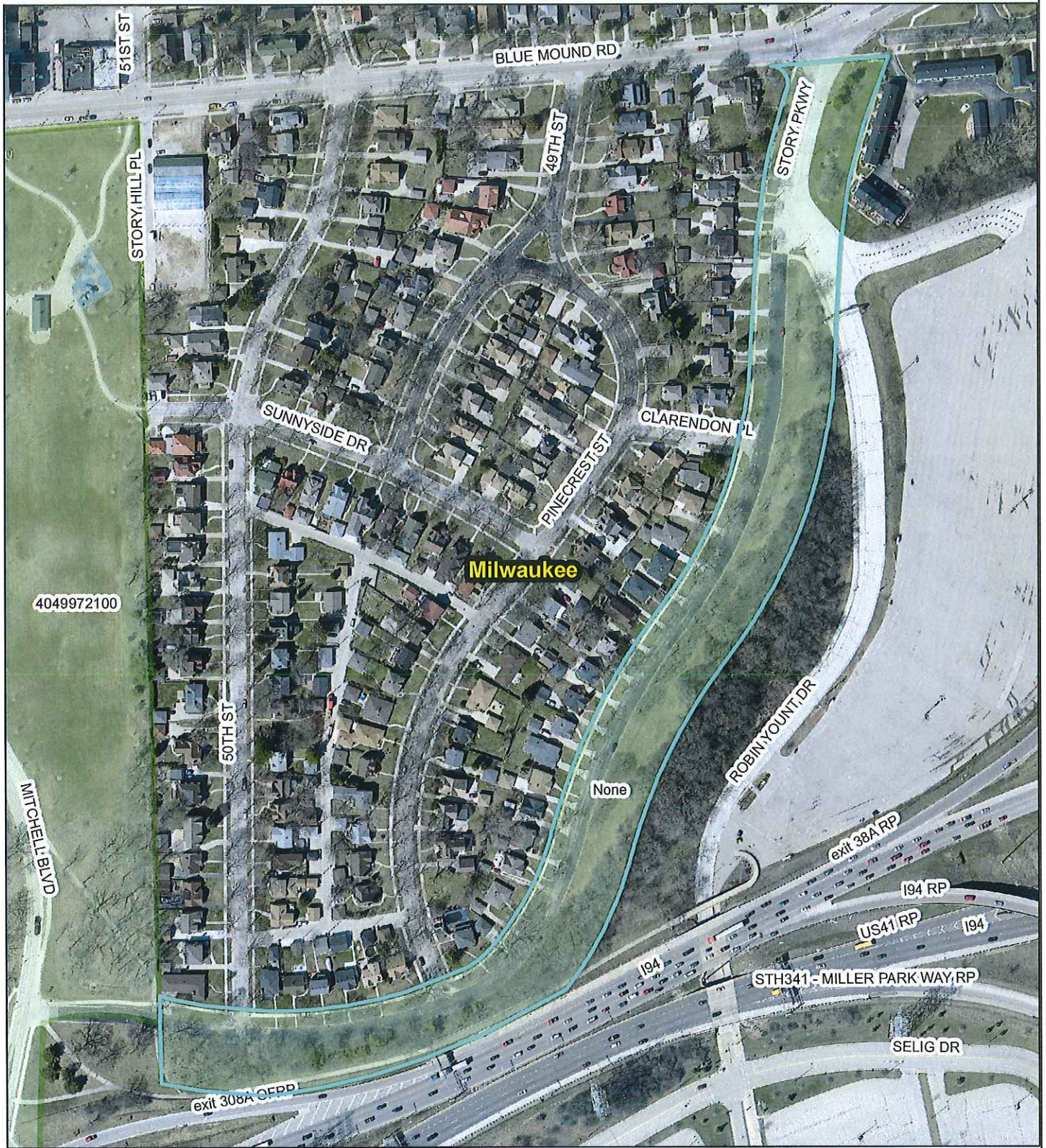
- Legend**
- Zoning By Parcel  
cntypublish.GISADMIN.TRN\_MCAMLIS\_STR\_CLINE
  - OLT\_Existing
  - OakLeafTrail\_Planned
  - Stream
  - Milwaukee County Parks

1 inch = 655 feet  
 0 335 670 Feet



2-22-2016

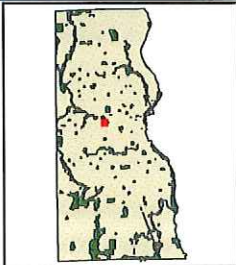




4049972100

None

Story Parkway - Milwaukee - Parcel without Tax Key #



Legend

- Zoning By Parcel  
cnypublish.GISADMIN.TRN\_MCAMLIS\_STR\_CLINE
-  Milwaukee County Parks
- Municipal Subdivisions**
- NAME**
-  Milwaukee

1 inch = 236 feet  
0 120 240 Feet



2-22-2016

 MILWAUKEE COUNTY  
**PARKS**



OFFICE OF THE COUNTY EXECUTIVE  
*Milwaukee County*  
CHRIS ABELE • COUNTY EXECUTIVE

February 29, 2016

Mayor Bryan Kennedy  
City of Glendale  
5909 N. Milwaukee River Pkwy  
Glendale, WI 53209

Mayor Kennedy,

On January 25, 2016 I forwarded a list of Milwaukee County Parks in your community that needed a zoning clarification. Thank you to both you and your staff for moving that request forward.

Now that we have a path forward on the proper zoning of parks, our staff has reviewed the remaining inventory of land that is owned by Milwaukee County and maintained by our Department of Parks, Recreation and Culture. This list of parcels includes land that is used for parkways, trails and environmental management.

After reviewing this list, and your community's zoning code, we believe it is appropriate to have these parcels rezoned as well. Consequently, Milwaukee County formally requests that the attached parcels be rezoned as C-1 Conservancy District.

Our staff will continue to work with your staff to submit any follow up materials necessary to complete the rezoning. If you have any questions, please do not hesitate to contact Teig Whaley-Smith, Director, Department of Administrative Services at 414-278-4808, [teig.whaley-smith@milwaukeecountywi.gov](mailto:teig.whaley-smith@milwaukeecountywi.gov).

Sincerely,

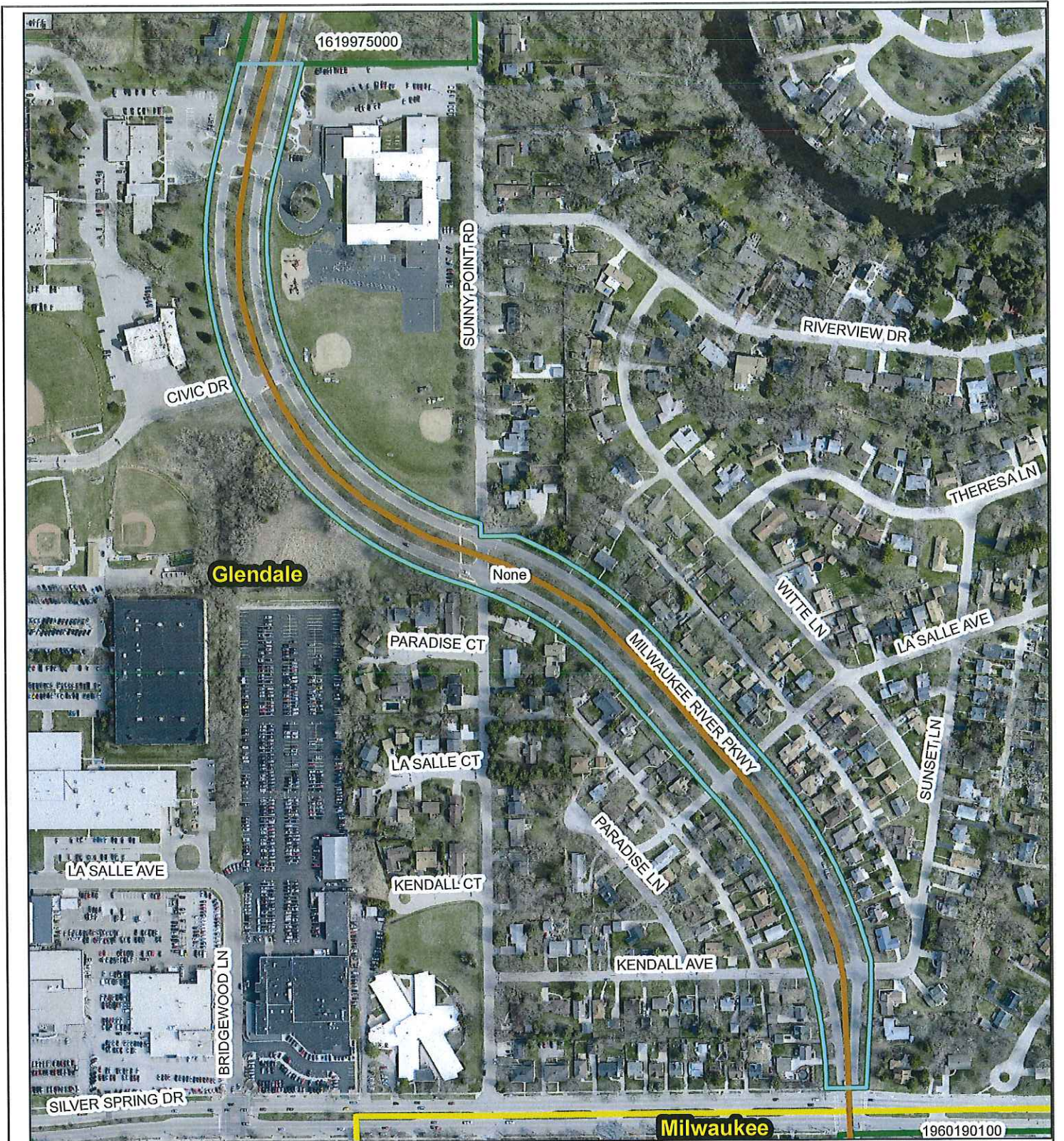
Chris Abele  
Milwaukee County Executive

Attachment

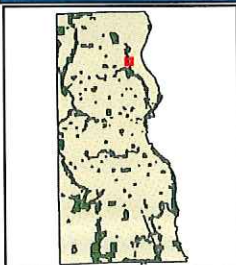
cc: Richard Maslowski, City Administrator



<u>Parcel #</u>	<u>Parcel is Adjacent to or Part of the Following Parkway:</u>	C-1 Conservancy District
1268977000	Milwaukee River Parkway	
1609979000	Former UP ROW	
1268997000	Milwaukee River Parkway	
1958998000	Former UP ROW	
1261053000	Milwaukee River Parkway	
1689987000	Former UP ROW	
1968995000	Former UP ROW	
1961009000	Milwaukee River Parkway	
1268976000	Milwaukee River Parkway	
1268999000	Milwaukee River Parkway	
1699993000	Former UP ROW	
2038996000	Former UP ROW	
1261072000	Milwaukee River Parkway	
1619975000	Milwaukee River Parkway	
1268998000	Milwaukee River Parkway	
1961009000	Milwaukee River Parkway	
2048999000	Former UP ROW	
1598997002	Former UP ROW	
Exhibit	Milwaukee River Parkway	



Milwaukee River Parkway - Glendale - Parcel without Tax Key #



Legend

- Zoning By Parcel  
cntypublish.GISADMIN.TRN\_MCAMLIS\_STR\_CLINE
- OLT\_Existing
- OakLeafTrail\_Planned
- Milwaukee County Parks
- Municipal Subdivisions
- NAME
- Glendale
- Milwaukee

1 inch = 332 feet  
0 170 340 Feet



2-22-2016





OFFICE OF THE COUNTY EXECUTIVE  
*Milwaukee County*  
CHRIS ABELE • COUNTY EXECUTIVE

February 29, 2016

Mayor Stephen Scaffidi  
City of Oak Creek  
8040 S 6<sup>th</sup> St  
Oak Creek, WI 53154

Mayor Scaffidi,

On January 25, 2016 I forwarded a list of Milwaukee County Parks in your community that needed a zoning clarification. Thank you to both you and your staff for moving that request forward.

Now that we have a path forward on the proper zoning of parks, our staff has reviewed the remaining inventory of land that is owned by Milwaukee County and maintained by our Department of Parks, Recreation and Culture. This list of parcels includes land that is used for parkways, trails and environmental management.

After reviewing this list, and your community's zoning code, we believe it is appropriate to have these parcels rezoned as well. Consequently, Milwaukee County formally requests that the attached parcels be rezoned as P-1.

Our staff will continue to work with your staff to submit any follow up materials necessary to complete the rezoning. If you have any questions, please do not hesitate to contact Teig Whaley-Smith, Director, Department of Administrative Services at 414-278-4808, [teig.whaley-smith@milwaukeecountywi.gov](mailto:teig.whaley-smith@milwaukeecountywi.gov).

Sincerely,

Chris Abele  
Milwaukee County Executive

Attachment

cc: Gerald Peterson, City Administrator

**Parcel # Parcel is Adjacent to or Part of the Following Parkway:**

**Change to P-1**

8729981001 Former North Shore ROW  
9089992001 Oak Creek Parkway  
9109987000 Oak Creek Parkway  
9209991000 Former North Shore ROW  
9209997002 Oak Creek Parkway  
8269985002 Former North Shore ROW  
8619986003 Former North Shore ROW  
9099991000 Former North Shore ROW  
9599997000 Oak Creek Parkway  
7660010000 Former North Shore ROW  
7669989002 Former North Shore ROW  
8159986000 Former North Shore ROW  
7819976003 Former North Shore ROW  
8739980000 Oak Creek Parkway  
9059999002 Oak Creek Parkway  
9209993000 Oak Creek Parkway  
9549984002 Root River Parkway  
9769996000 Root River Parkway  
8739975000 Former North Shore ROW  
9219998000 Oak Creek Parkway  
9099991000 Former North Shore ROW  
9589999003 Oak Creek Parkway  
9749995001 Root River Parkway  
9219984000 Former North Shore ROW  
9199992000 Oak Creek Parkway  
9209995000 Oak Creek Parkway  
9749995001 Root River Parkway  
9089992003 Oak Creek Parkway  
8759998002 Oak Creek Parkway  
9209998000 Oak Creek Parkway  
9089999000 Oak Creek Parkway  
9109977000 Oak Creek Parkway  
9779997000 Root River Parkway  
9599990000 Former North Shore ROW  
9709990000 Former North Shore ROW  
8149989000 Former North Shore ROW  
8269985001 Former North Shore ROW  
9069030000 Oak Creek Parkway  
9099991000 Former North Shore ROW  
9209996000 Oak Creek Parkway  
9109980000 Oak Creek Parkway  
9599997000 Oak Creek Parkway  
9089991002 Oak Creek Parkway  
9779999001 Root River Parkway  
9059993003 Oak Creek Parkway



OFFICE OF THE COUNTY EXECUTIVE  
*Milwaukee County*  
CHRIS ABELE • COUNTY EXECUTIVE

February 29, 2016

Mayor Dan Devine  
City of West Allis  
7525 W. Greenfield Ave.  
West Allis, WI 53214

Dear Mayor Devine,

Milwaukee County has undergone an extensive review of the zoning of its properties. The first review was of Milwaukee County Parks and was completed on January 25, 2016. That review determined that any Milwaukee County Park in your community was already appropriately zoned.

Our staff has completed the second phase of its review and has reviewed the remaining inventory of land that is owned by Milwaukee County and maintained by our Department of Parks, Recreation and Culture. This list of parcels includes land that is used for parkways, trails and environmental management.

After reviewing this list, and your community's zoning code, we believe it is appropriate to have these parcels rezoned. Consequently, Milwaukee County formally requests that the attached parcels be rezoned as P-1.

Our staff is happy to submit any follow up materials necessary to complete the rezoning. If you have any questions, please do not hesitate to contact Teig Whaley-Smith, Director, Department of Administrative Services at 414-278-4808, [teig.whaley-smith@milwaukeecountywi.gov](mailto:teig.whaley-smith@milwaukeecountywi.gov).

Sincerely,

Chris Abele  
Milwaukee County Executive

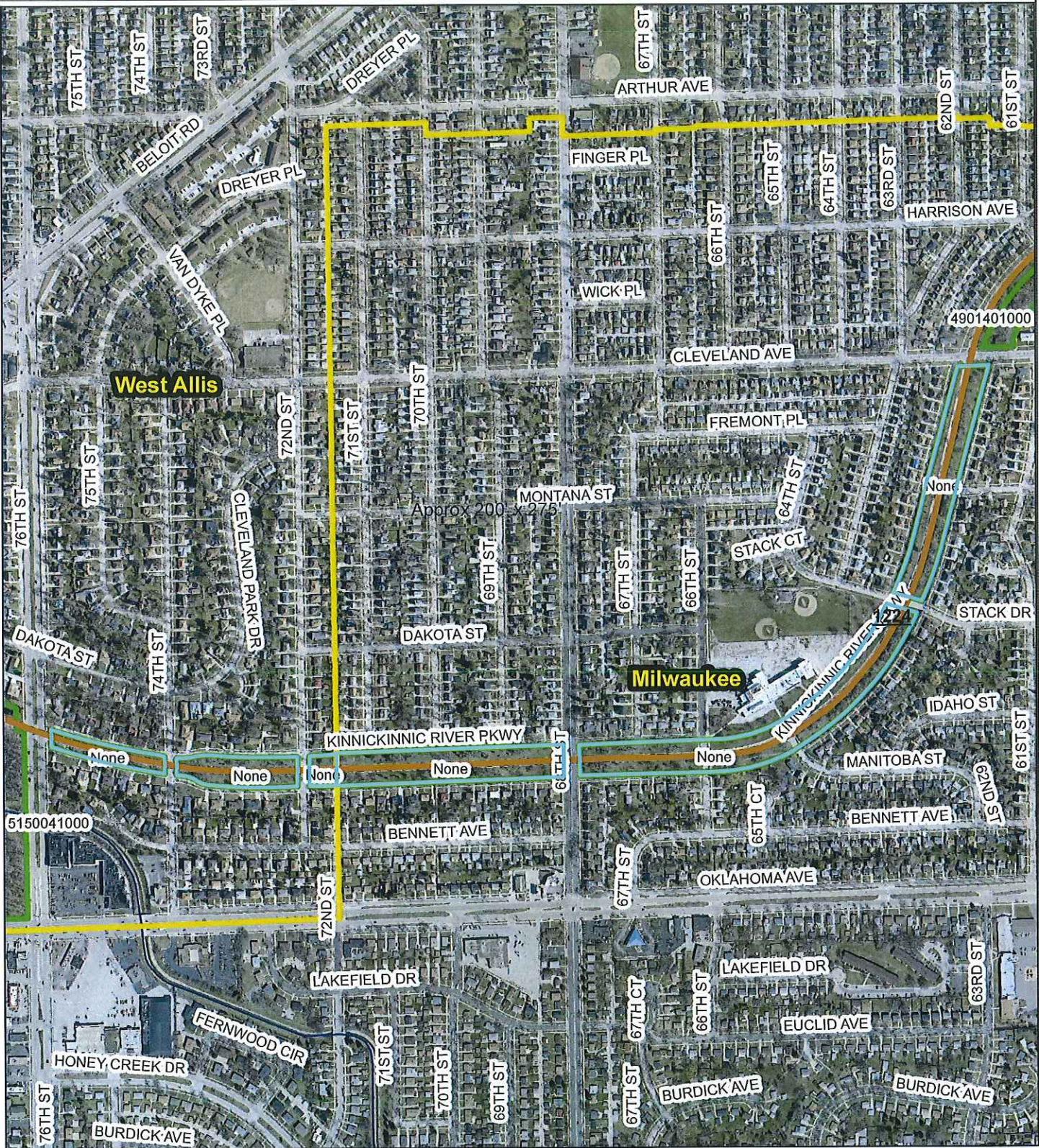
Attachment

cc: Rebecca N. Grill, City Administrator

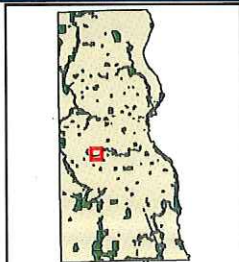
**Parcel # Parcel is Adjacent to or Part of the Following Parkway:**

**change to P-1**

- Exhibit Kinnickinnic River Parkway
- Exhibit Kinnickinnic River Parkway
- Exhibit Kinnickinnic River Parkway



Kinnickinnic River Parkway - Parcels without Tax Key #s



**Legend**

- Zoning By Parcel  
cntypublish.GISADMIN.TRN\_MCAMLIS\_STR\_CLINE
- OLT\_Existing
- OakLeafTrail\_Planned
- Stream
- Milwaukee County Parks

1 inch = 655 feet  
 0 335 670 Feet



2-22-2016





OFFICE OF THE COUNTY EXECUTIVE  
*Milwaukee County*  
CHRIS ABELE • COUNTY EXECUTIVE

February 29, 2016

Village President Guy Johnson  
Village of Shorewood  
3930 N. Murray Ave.  
Shorewood, WI 53211

President Johnson,

Milwaukee County has undergone an extensive review of the zoning of its properties. The first review was of Milwaukee County Parks and was completed on January 25, 2016. That review determined that any Milwaukee County Park in your community was already appropriately zoned.

Our staff has completed the second phase of its review and has reviewed the remaining inventory of land that is owned by Milwaukee County and maintained by our Department of Parks, Recreation and Culture. This list of parcels includes land that is used for parkways, trails and environmental management.

After reviewing this list, and your community's zoning code, we believe it is appropriate to have these parcels rezoned. Consequently, Milwaukee County formally requests that the attached parcels be rezoned as P-3.

Our staff is happy to submit any follow up materials necessary to complete the rezoning. If you have any questions, please do not hesitate to contact Teig Whaley-Smith, Director, Department of Administrative Services at 414-278-4808, [teig.whaley-smith@milwaukeecountywi.gov](mailto:teig.whaley-smith@milwaukeecountywi.gov).

Sincerely,

Chris Abele  
Milwaukee County Executive

Attachment



**Parcel #**   **Parcel is Adjacent to or Part of the Following Parkway:**  
274900000 Milwaukee River Parkway

**Change to P-3**



OFFICE OF THE COUNTY EXECUTIVE  
*Milwaukee County*  
CHRIS ABELE • COUNTY EXECUTIVE

February 29, 2016

Mayor Michael J. Neitzke  
City of Greenfield  
7325 W. Forest Home Ave  
Greenfield, WI 53220

Dear Mayor Neitzke,

Milwaukee County has undergone an extensive review of the zoning of its properties. The first review was of Milwaukee County Parks and was completed on January 25, 2016. That review determined that any Milwaukee County Park in your community was already appropriately zoned.

Our staff has completed the second phase of its review and has reviewed the remaining inventory of land that is owned by Milwaukee County and maintained by our Department of Parks, Recreation and Culture. This list of parcels includes land that is used for parkways, trails and environmental management.

After reviewing this list, and your community's zoning code, we believe it is appropriate to have these parcels rezoned. Consequently, Milwaukee County formally requests that the attached parcels be rezoned as PR District.

Our staff is happy to submit any follow up materials necessary to complete the rezoning. If you have any questions, please do not hesitate to contact Teig Whaley-Smith, Director, Department of Administrative Services at 414-278-4808, [teig.whaley-smith@milwaukeecountywi.gov](mailto:teig.whaley-smith@milwaukeecountywi.gov).

Sincerely,

Chris Abele  
Milwaukee County Executive

Attachment

**Parcel #   Parcel is Adjacent to or Part of the Following Parkway:**

Change to PR District

5669976001 Root River Parkway

5669970001 Root River Parkway



OFFICE OF THE COUNTY EXECUTIVE  
*Milwaukee County*  
CHRIS ABELE • COUNTY EXECUTIVE

February 29, 2016

Village President Robert G. Ruesch  
Village of Hales Corners  
5635 S. New Berlin Rd.  
Hales Corners, WI 53130

Dear President Ruesch,

Milwaukee County has undergone an extensive review of the zoning of its properties. The first review was of Milwaukee County Parks and was completed on January 25, 2016. That review determined that any Milwaukee County Park in your community was already appropriately zoned.

Our staff has completed the second phase of its review and has reviewed the remaining inventory of land that is owned by Milwaukee County and maintained by our Department of Parks, Recreation and Culture. This list of parcels includes land that is used for parkways, trails and environmental management.

After reviewing this list, and your community's zoning code, we believe it is appropriate to have these parcels rezoned. Consequently, Milwaukee County formally requests that the attached parcels be rezoned as P-1.

Our staff is happy to submit any follow up materials necessary to complete the rezoning. If you have any questions, please do not hesitate to contact Teig Whaley-Smith, Director, Department of Administrative Services at 414-278-4808, [teig.whaley-smith@milwaukeecountywi.gov](mailto:teig.whaley-smith@milwaukeecountywi.gov).

Sincerely,

Chris Abele  
Milwaukee County Executive

Attachment

cc: Michael F. Weber, Village Administrator

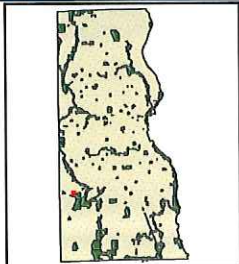
**Parcel #** **Parcel is Adjacent to or Part of the Following Parkway:**

SEE MAP

Change to P-1



Whitnall Park Parcel - No Tax Key



Legend  
Park Parcels  
Milwaukee County Parks

1 inch = 104 feet  
0 50 100 Feet



2-29-2016

MILWAUKEE COUNTY  
**PARKS**