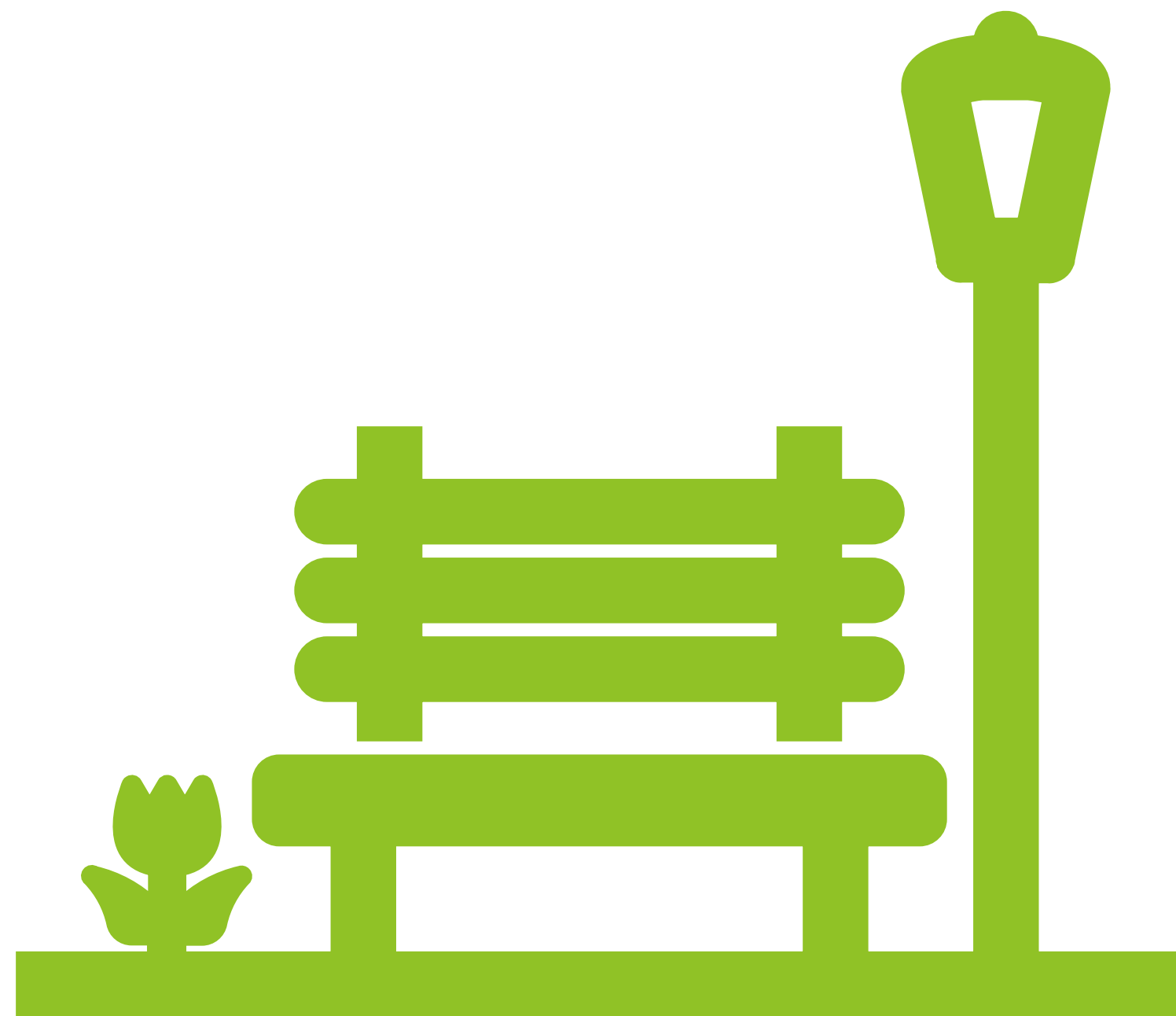


# WE Energies Easement Underwood Creek at Watertown Plank

July 8, 2025



## Request:

- From the Executive Director of Milwaukee County Parks, requesting authorization to grant an easement to WE Energies at Mayfair Rd and Watertown Plank Rd in Wauwatosa to provide for electric service relocation.

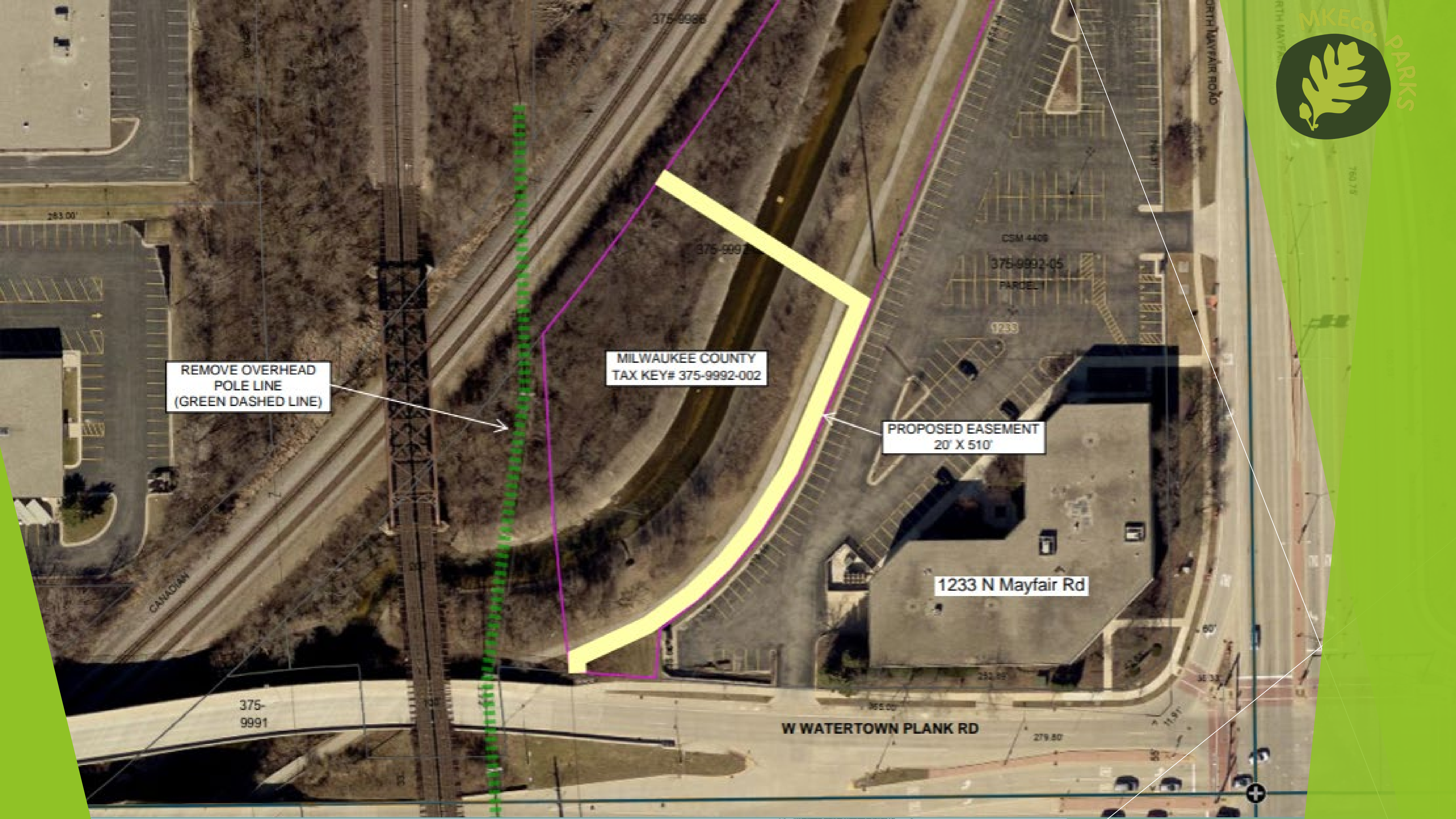


## Background:

- ▶ This easement will improve the electric system reliability.
- ▶ WE Energies is looking to install, operate, maintain, repair, replace and extend underground utility facilities, conduit and cables, electric pad-mounted transformers, manhole, electric pad-mounted switch-fuse units, electric pad-mounted vacuum fault interrupter, concrete slabs, power pedestals, riser equipment, terminals and markers, to transmit electric energy, signals, television and telecommunication services
- ▶ The underground lines will be installed by directional boring.
- ▶ The proposed final easement on parkland is approximately 10,200 square feet or approximately .23 acres

# Terms:

- ▶ The Easement is permanent
- ▶ Easement fee is \$1.60 per square foot: \$16,320
- ▶ The easement size is 10,200 square feet



REMOVE OVERHEAD  
POLE LINE  
(GREEN DASHED LINE)

MILWAUKEE COUNTY  
TAX KEY# 375-9992-002

PROPOSED EASEMENT  
20' X 510'

1233 N Mayfair Rd

W WATERTOWN PLANK RD



## Strategic Plan Alignment

- ▶ This project supports Parks' 2023-26 Strategic Plan alignment by Equitability balancing the park system to be more sustainable

Questions?