

Milwaukee County Sheriff's Office

2022 County Board Information Report



Sheriff Earnell R. Lucas

Revised July 11, 2022

Sheriff Earnell R. Lucas

Sheriff Earnell R. Lucas was elected the 65th Sheriff of Milwaukee County on November 6, 2018. He is committed to restoring honor, integrity and trust in the Sheriff's Office by treating everyone with dignity and respect. Sheriff Lucas commands a staff that is responsible for safety and security at Milwaukee Mitchell International Airport, the Milwaukee County Circuit Courts, the Milwaukee County Jail and the Milwaukee County parks and freeway systems.

Sheriff Lucas was born in Milwaukee's Hillside Terrace housing project and raised by his grandmother. He is a product of the Milwaukee Public Schools system and earned a bachelor's degree *cum laude* in criminology and law studies from Marquette University.





Sheriff Lucas was inspired to a career in law enforcement at an early age after an encounter with a police officer, which showed him the awesome authority and trust the public places in police officers. In a 25-year career with the Milwaukee Police Department, he served as the department's public information officer and as a district commander and retired at the rank of captain. Sheriff Lucas survived a gunshot wound as a young officer but overcame it to finish his career.




Sheriff Lucas enjoyed a 17-year career with Major League Baseball prior to becoming sheriff. He rose to oversee all of security at Major League Baseball as the Vice President of Security & Facility Management and later served as the Chief Liaison of Security & Investigations. His career took him to all parts of the world overseeing security operations, conducting sensitive investigations and safeguarding the integrity of the game of baseball at the major and minor league levels.

Sheriff Lucas and his wife reside in Milwaukee and attend St. Matthew C.M.E. Church, where he has been an active member for over 50 years.



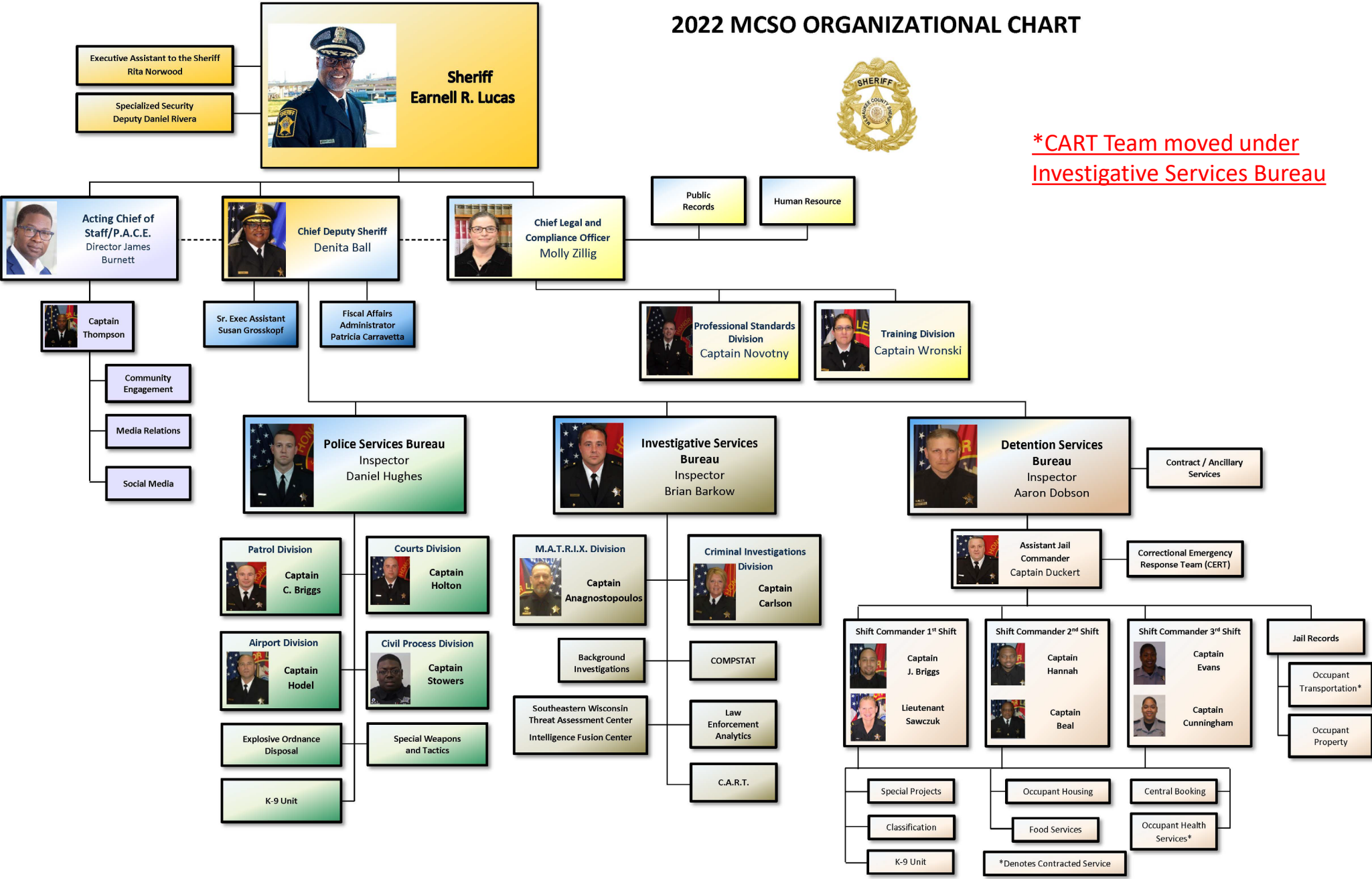
Our Mission, Vision and Values



-  Restore honor, integrity and trust to the Milwaukee County Sheriff's Office
-  Operate a safe and humane agency where citizens, staff and occupants are treated with dignity and respect
-  Ensure accountability, efficiency, and effectiveness in law enforcement operations



2022 MC SO ORGANIZATIONAL CHART



Administrative Office

Chief Deputy

Responsible for the daily operations of the agency and oversees:

- Police Services Bureau
- Detention Services Bureau
- Investigative Services Bureau
- Public Affairs and Community Engagement
- Fiscal Operations



Administrative Office

Chief Legal & Compliance Officer

Supervises the agency's compliance with laws, rules, policies and procedures and oversees:

- Training Division
- Professional Standards Division
- Public Records

In addition, the Chief Legal & Compliance Officer coordinates with the Milwaukee County Department of Human Resources on a variety of human resource functions, ADA and FMLA leaves.



Administrative Office

Chief of Staff

Functions as the liaison and resource for legislative/policy issues for the Milwaukee County Sheriff's Office. The Chief of Staff is instrumental in building relationships and partnerships throughout Milwaukee County. Duties of the Chief of Staff include:

- Conducting Research
- Monitoring Contracts and Grant Applications
- Representing MCSO in meetings and on committees



Public Affairs & Community Engagement (P.A.C.E)

The Public Affairs and Community Engagement Unit (P.A.C.E.) informs, engages, and empowers the community while building and strengthening trust and providing public safety to the residents of Milwaukee County. P.A.C.E. consists of the following:

- Media Relations
 - Social Media
- Community Engagement
 - Honor Guard
 - Cadets
 - Chaplaincy Program



Public Affairs & Community Engagement (P.A.C.E)

Community engagement and outreach is a priority within the Milwaukee County Sheriff's Office. P.A.C.E activities include Public Safety Education & Presentations regarding:



- Car Seat Installations
- Dangers of Social Media
- Destructive Driving Decisions
- Personal Safety Tips



Public Affairs & Community Engagement (P.A.C.E)

Events Include:

- Parks & Safety Days
- Missing Child Safety Events
- Community Resource Fairs
- Recruitment Events
- National Night Out Events
- Back to School Events
- Coffee or Tea with a Deputy
- Holiday Giveaways and Drives
- Community & Neighborhood Improvement Meetings
- Parades and Other Community Events



Fiscal Operations

The Fiscal Division provides financial support for the Office of the Sheriff, including accounting, reporting, and budgeting. All revenues and expenditures flow through Fiscal, including federal and state awards, grants, fees, commodities, contracts and projects. Fiscal also performs trust accounting and related fiduciary duties for occupants in the Milwaukee County Jail.



Public Records Division

The Public Records Division maintains and distributes public records for the Milwaukee County Sheriff's Office. Requests are accepted via email, in person, U.S. mail or fax. Records include (but are not limited to) citations, incident reports, crash reports, photos, squad video, 911 call recordings and criminal history information pertaining to the Milwaukee County Sheriff's Office only. The Milwaukee County Sheriff's Office is governed by the Wisconsin Public Records law.



Training Academy

The Training Academy is certified by the Law Enforcement Standards Board (LESB). The LESB is a policy-making body attached to the WI Department of Justice (WI-DOJ), as authorized by state law under § 15.255, Wis. Stats. The Training Academy is certified to conduct the preparatory training for Law Enforcement and Jail Officer certifications. The Training Academy also conducts the LESB mandated annual recertification training for Law Enforcement and Jail Officers of the Milwaukee County Sheriff's Office.



Professional Standards Division

The Professional Standards Division is responsible for coordinating the investigation of personnel matters, citizen's complaints, legal claims and lawsuits for the Sheriff's Office. The division will ensure the integrity of the Sheriff's Office by conducting complete, objective and independent investigations of alleged employee misconduct and other investigations in a timely manner.



Police Services Bureau

The Police Services Bureau (PSB) provides patrols for the Milwaukee County freeway, the County's Institutional Grounds, County Parks and the Milwaukee Mitchell International Airport. In addition, the PSB ensures safety in the Milwaukee County Circuit Courts and the Vel Phillips Juvenile Justice Center. The Divisions within the Police Services Bureau include:

- Airport Division
- Courts Division
- Patrol Division



Police Services Bureau

Airport Division

The airport Division is responsible for providing overall security and law enforcement services for MMIA and Timmerman Airport in complying with the Federal Aviation security requirements and includes a K-9 Unit and an Explosive Ordinance Device (EOD) Unit or “Bomb Squad”. The airport complex spans over 2300 acres and deputies assigned there work closely with the Transportation Security Administration (TSA), Airport Operations, the Federal Aviation Administration (FAA), and the Milwaukee Fire Department.



Police Services Bureau

Courts Division

The Courts Division spans four buildings, including the Milwaukee County Jail, Milwaukee County Courthouse, Safety Building, and the Vel Phillips Juvenile Justice Center. Courts Division Staff include deputies who provide intake service and building and courtroom security. The Civil Process Unit, which serves court orders, injunctions and evictions are under the umbrella of this division.



Police Services Bureau

Courts Division (Cont.)

Traffic Desk

- Process & Maintain Accident Reports, Traffic & Parking Citations

Civil Process

- Evictions
- Restraining Orders
- Subpoenas
- Small Claims
- Injunctions



Police Services Bureau

Patrol Division

The Patrol Division provides service to 158 miles of freeway and county roads, over 150 parks and county grounds in Milwaukee County. Unlike other areas of the state, the Milwaukee County Sheriff's Office has the primary responsibility for traffic and law enforcement on the freeway system. Patrol Division units include:

- Mitigation Unit
- Motorcycle Unit (Motor Unit)
- Patrol Unit
- Parks & Targeted Enforcement Unit
- Maritime Unit
- Bike Patrol Unit



Police Services Bureau

Specialized Units

- Explosive Ordinances Disposal (EOD) “Bomb Squad”
- Canine (K-9) Units
 - Airport
 - Patrol
- Special Weapons And Tactics Unit (SWAT)
- Mobile Response Team
- Mitigation Unit
- Maritime Unit



Investigative Services Bureau

The Investigative Services Bureau (ISB) provides actionable intelligence and data to ensure effective and efficient operations of the agency. Divisions within ISB include:

- Milwaukee Area Threat Reduction through Intelligence eXchange (MATRIX) Division
- Field Deputy Inspection Division
- Criminal Investigations Division
- CART Team



Investigative Services Bureau

Milwaukee Area Threat Reduction through Intelligence eXchange (MATRIX) Division

- Gathers actionable intelligence, which leads to investigations aimed at dismantling criminal gangs, drug enterprises and violent crime

Field Deputy Inspection Division

- Oversees, supervises and ensures the effective operation of the agency during the evenings, weekends and holidays.



Investigative Services Bureau

Criminal Investigations Division (CID)

The Criminal Investigations Division is a multi-task-oriented unit of highly trained and experienced criminal investigators who identifies and solves crimes and obtains convictions. The division includes general, criminal and background investigations, and computer statistics and intelligence.

Law Enforcement Analytics Division (LEAD)

The Law Enforcement Analytics Division manages IT systems for data and software.



Investigative Services Bureau

Crisis Assessment and Response Team (C.A.R.T)



Since December 1, 2021, the Milwaukee County Sheriff's Office has operated a Crisis Assessment and Response Team, a highly specialized unit that pairs uniformed deputies and behavioral health clinicians and other specialists to respond to 911 calls regarding people experiencing mental health crises.

The MCSO CART consists of three specially trained deputies, supervised by a Sheriff's lieutenant, and covers such crises in 17 Milwaukee County municipalities that do not have existing comparable services. One of CART's goals is to decrease the number of involuntary emergency detentions in Milwaukee County by providing stabilization at scenes and helping those in crisis access mental health resources.



Investigative Services Bureau

Crisis Assessment and Response Team (C.A.R.T)

Behavioral Health Services funded this program through December 31, 2022. For this program to continue, the Milwaukee County Sheriff's Office has requested monies in our 2023 budget to ensure that this team is fully funded.



Investigative Services Bureau

Additionally, the Investigative Services Bureau has sworn personnel assigned to special task forces as determined by the agency to include the following:

- Federal Bureau of Investigations
- United States Marshals
- Bureau of Alcohol, Tobacco, Firearms and Explosives (ATF)
- High Intensity Drug Trafficking Area (HIDTA) Program
- Internet Crimes Against Children (ICAC) Task Force Program



Detention Services Bureau

The Detention Services Bureau is responsible for the operations of the Milwaukee County Jail (MCJ) and the safe and secure detention of all individuals arrested and housed there. As the largest jail in the state, MCJ processes and releases over 30,000 occupants annually. In 2021, for the first time in MCSO history, the Milwaukee County Jail attained accreditation from the blue-ribbon National Commission on Correctional Health Care. The areas in the Detention Services Bureau include:

- Jail Records
- Special Projects
- Classification and Inmate Housing
- Food Services
- Central Booking
- Inmate Health Services
- Corrections Emergency Response Team



Contact Information

Sheriff Earnell R. Lucas

sheriff@milwaukeecountywi.gov

(414) 278-4766

Chief Deputy Denita R. Ball

Denita.Ball@milwaukeecountywi.gov

(414) 278-4342 | (414) 639-5420

Director James Burnett (Acting Chief of Staff)

James.Burnett@milwaukeecountywi.gov

(414) 278-5187 | (414) 335-0268

